

SPRING 2018 Volume 69

# landscript



Love the land. *Pass it on.*

## OUR ANNUAL REPORT

Unique Old Mission  
Vineyard Protected

Community Conservation

479 Acres Protected  
Near Kingsley

PHOTO BY NOAH JURIK/  
STONE HUT STUDIOS

*Leortie Vineyard on  
Old Mission Peninsula*

Protecting significant natural, scenic and farm lands — and advancing stewardship — now and for future generations.





# A Letter from Glen Chown

## DEAR FRIENDS,

Our mission at GTRLC is clear and strong:

*Protecting significant natural, scenic and farm lands – and advancing stewardship – now and for future generations.*

These days, I've been thinking a lot about one particular word in our mission: Scenic. Significant natural and farm lands are easy to define with our Priority Land Atlas, which uses scientific criteria to determine the most valuable land in our service area. But when it comes to scenic land, the situation gets decidedly more subjective. Beauty, as the old adage goes, is in the eye of the beholder.

I've always been awestruck by the view looking south from the first platform at the Green Point Dunes Nature Preserve. This "Sound of Music" view, as I've always called it, is special in more ways than one. Aside from the stunning panorama of Lake Michigan shore, sandy dunes and beautiful coastal forest it provides, it also makes me think fondly of the lasting friendships we forged during the Coastal Campaign.

Sometimes a favorite view might be less natural. Ask my wife Becky, and she'll tell you that she's especially fond of the view of the idyllic Maple Bay Farmhouse along U.S. 31, particularly when it's surrounded by a blazing yellow field of sunflowers.

Our ongoing work to restore the farmhouse has preserved the historic character there while making the overall scene pop with a vibrancy not seen in years.

With an impressive legacy of protected lands – nearly 41,000 acres and counting – there's certainly no shortage of views to be enjoyed. From the rolling fruit farms of the Old Mission Peninsula and the scenic ridges that frame the Boardman River Valley to the quiet beauty of the Rapid River as it spills through a lush forest of cedars and hemlocks at Seven Bridges, the choices are almost endless.

So, I wonder, what's YOUR favorite view – and why? Perhaps it's a spot that makes you feel "home," or that simply takes your breath away every time you visit. Maybe it's significant or important for reasons beyond the view itself. How would life be different if that favorite view was obstructed or made inaccessible by development? How do these views allow you to heal and bolster your mental health?

I'd love to hear from you as we work to better define the importance of scenic viewshed protection. Please email me at [myfavoriteview@gtrlc.org](mailto:myfavoriteview@gtrlc.org) and let me know. I look forward to reading about the scenic views that you all hold dear.



**Glen Chown**  
GTRLC Executive Director

# Leader of the Pack

## VOLUNTEER SALLY MANKE ADVANCES GTRLC'S MISSION BY LEADING HIKES



The sweeping views of Lake Michigan from the top of Old Baldy or Green Point Dunes never cease to amaze Sally Manke, and the hikes that lead to these views always instill in her a sense of calming and peace.

And while Sally certainly doesn't mind making these journeys alone, it's much more fulfilling when she can lead a group and share the experience.

"I just so enjoy seeing people experience these places, whether it's their 70th time or their first time," she said. "There's just nothing better."

Sally has served GTRLC as a volunteer steward for more than a decade, helping to care for preserves near the Lake Michigan coast. In addition to her important stewardship work, another huge contribution to GTRLC is her willingness to lead multiple public hikes during the winter months. These hikes have engaged hundreds of people over the years, generating awareness and good will for GTRLC.

"We can't thank Sally enough for being such a tremendous ambassador for the Conservancy," said Nate Richardson, who coordinates volunteers for GTRLC. "She helps us advance our mission by getting people excited about the work that we do."

Sally lives in Arcadia and taught multiple subjects in the Onekema middle and high schools for more

than two decades before retiring. She now runs an online quilt shop and teaches art quilting at seminars around the country. Her husband has deep roots in the Arcadia area that stretch back generations; his grandfather even served as the village's first blacksmith.

Sally first became involved shortly after the Coastal Campaign – an ambitious \$35 million

campaign that resulted in the protection of Arcadia Dunes and Green Point Dunes – at the urging of longtime GTRLC volunteer and fellow hike leader Paula Dreeszen.

She knows that engaging people with the land is the only way to make sure people will be enthusiastic about conservation, now and into the future.

"By sharing all of this, you make sure that when the next campaign comes along, people will listen," she said. "Look at Arcadia Dunes... people can stand there and say, wow, 15 years ago, somebody had a vision and made this happen. What can we look back on 15 years from now?"



Sally Manke (center) leads a group hike along the coast.

---

If you are interested in volunteering, email Nate Richardson at [nate@gtrlc.org](mailto:nate@gtrlc.org).

Keep an eye on the events calendar at [www.gtrlc.org](http://www.gtrlc.org) for the spring hike schedule, which will include the popular May wildflower hikes led by Paula Dreeszen.

# 'Second to None'

## LEORIE VINEYARD TO BE FOREVER PROTECTED BY CONSERVATION EASEMENT

For years and years, as he made the trip to Traverse City from his home in Leelanau County, Bernie Rink's eyes would drift across Grand Traverse Bay and land on a large, conspicuous scar on Old Mission Peninsula.

That scar – or gouge, or scrape, or gash, depending on who you were talking to – was a large gravel pit. Rumor has it that gravel beneath the Cherry Capital Airport runways came from that pit, as did the gravel for countless other projects throughout the region over the years.

But there's something decidedly more scenic for Rink's eyes to settle on now, as that scar has for many years been a productive and beautiful vineyard – a vineyard he proudly helped plan nearly 30 years ago.

"I really enjoy the fact that it's nice and green again after driving into town all those years and seeing it as a big gouge in the earth there," Rink said. "It's a good feeling."

Now, thanks to the foresight of property owners Bill and Susie Janis, the 18-acre Leorie Vineyard will be forever protected with a conservation easement donated to the Grand Traverse Regional Land Conservancy. Because the many features that make it a truly world-class vineyard would

also make it a prime site for housing, its protection is especially sweet.

"We're just so thrilled for the opportunity to protect this truly remarkable piece of land," GTRLG Executive Director Glen Chown said. "For many different reasons, this one would really have been a shame to lose to development."

Janis acquired the gravel pit not long after he bought a house overlooking the property in 1988. He was

compelled to purchase it after the previous owner began plans for a housing development there, something he hoped to avoid. But once he became the not-so-proud owner of an old gravel pit, he needed to figure out what to do there.

After tossing around a few other ideas – a Christmas tree farm was among them – he consulted with Rink, a librarian and pioneering winemaker who years earlier had established

Boskydel Vineyards, the first commercial winery on the Leelanau Peninsula. Rink, now 91, was quick to see the potential for a vineyard.

"He said, 'My gosh Bill, this site is second to none,'" Janis recalls. "There's nothing like this around here."

Among other factors, the property's elevation, air drainage and proximity to the water make it an



*Red wine grapes flourish at Leorie.*







excellent grape-growing location. A wooded ridge surrounding the vineyard helps trap heat early and late in the season, something that is particularly beneficial for the red wine grapes that grow there.

In a region dominated by white grape varieties, those reds – merlot and cabernet franc, to be specific – were planted on a whim, Janis said. The whim panned out, as the vineyard is now known for the red wine it produces (though about half is planted with white varieties). Black Star Farms gets them all, producing a special label wine with the reds.

Because of its natural features and exceptional red grape growth, Leorie is one of the most unique properties not just on Old Mission, but throughout the entire region.

“In hindsight, we made a mistake,” Janis said. “If we had known what could be grown there in terms of a quality red, the whole place would have been planted with red.”

**“Everybody, and I mean everybody, thought that once Bill was done with his vineyard, that this property would be developed and gone.”**

The site is now managed by Craig Cunningham, a seasoned vineyard manager who has worked on hundreds of sites from Manistee up to Charlevoix for more than 25 years. He’s now mostly retired, but still works at Leorie in large part because he just loves it there.

“This is the number one site out of all the sites I’ve worked on, hands down,” said Cunningham, who has worked at Leorie since 1994. “If people were to say, regardless of size, which is your favorite, it would be this one. It has a priceless presentation of what this region has to offer.”

Because of the stunning views the site offers and its proximity to town, Cunningham and many others





assumed it would eventually be developed. The property would allow for as many as 15 high-end home sites had it been available for that purpose, and there likely would have been no shortage of interested developers.

“Everybody, and I mean everybody, thought that once Bill was done with his vineyard, that this property would be developed and gone,” he said. “And that obviously isn’t going to come to pass, which is wonderful. Bill has made major contributions to this region, and he wants this to be part of his legacy.”

Janis had heard of the concept of a conservation easement before, but hadn’t paid much attention until recently when he briefly considered selling the land. As he thought about his beautiful vineyard plowed away to make room for houses, his stomach turned.

“If that was to happen, regardless of the amount of money I would have received for the land, I would be very, very disappointed,” he said. “The most important thing here is that forever and a day, this property is never going to be developed.”

And for Janis, it’s more than just preserving the physical beauty of the land. He wants to honor the hard work of the people who helped make Leorie into the well-respected vineyard that it is today.

“Some great people have been involved in it and put in a lot of effort, and they’ve been really instrumental in the success there,” he said.

Janis is a proud Michigan State University graduate, and he’s also excited about the future of educational opportunities at the vineyard. Cunningham has worked closely for years with MSU researchers on a variety of initiatives, from insect monitoring and trapping to non-insecticide pest treatment, pruning technique studies and much more.

The property’s size, mix of grape varieties and location near town make it a perfect classroom, Cunningham said. MSU graduate students have



*Workers tend to the vines at Leorie.*

**“If people can do what I did, it’s really a win-win for everybody.”**

studied pest control on the property, and local Northwestern Michigan College students have learned about viticulture, landscaping and other fields of study.

And although his decision wasn’t financially driven, the tax savings tied to conservation easements also were appealing to Janis, he said. He encourages other landowners to explore conservation easements for their properties.

“If people can do what I did, it’s really a win-win for everybody,” he said.



*Children go for a hike at the North Street Nature Trail.*

## Building Strong Communities

### CHARLIE KEHR MEMORIAL TRAIL CONNECTOR, CENTRAL LAKE TRAIL EXAMPLES OF COMMUNITY CONSERVATION

Some of the most important projects completed by GTRLC don't rank high on the acreage scale. Sometimes, they aren't even measured in acres at all.

This is often true of projects in which GTRLC responds to a specific community need. These "community conservation" projects help cities, villages, townships and other communities in our area achieve their recreation and resource-based placemaking goals.

"Our organization wants to be at the forefront of helping communities maximize their outdoor recreation opportunities," GTRLC Executive Director Glen Chown said. "Part of that means we must be responsive and ready to help when these communities seek our expertise to get things done."

Community conservation projects sometimes do involve acquisition of sizeable chunks of land. GTRLC's purchase of the Sand Lakes 160 parcel last

year – a move that protected the route for the immensely popular Iceman Cometh mountain bike race, as well as several other races and events – is

a great example of protecting land to fill a community need. We are also helping Benzie County's Homestead Township acquire a beautiful 52-acre parcel with 1,500 feet of frontage on the Platte River, fulfilling a years-old community desire to have a public park there.

Two other recent projects show that something as simple as a new trail or trail connector can have an equally huge impact.

The first is the Charlie Kehr Memorial Trail Connector along Crystal Lake. This planned stairway will connect the Mary Margaret Johnson trail in the beautiful Railroad Point Natural Area with the popular Betsie Valley Trail, which passes along the lake a short (but currently impassible) distance below the natural area.

"Right now we have two wonderful assets in Railroad Point and the Betsie Valley trail that are right next to

each other, but there's no easy way to get from one to the other," said Benzie County Parks Commissioner Ann Bourne. "This stairway will connect the two and give a big boost to recreation along Crystal Lake."

The stairway, to be completed this year, will be named in honor of



*Linda and Charlie Kehr.*



Charlie Kehr, a former GTRLC board member and Benzie parks commissioner who was a key player in many outdoor initiatives in Benzie County.

“Charlie believed strongly in the importance of recreation in our county, and he was instrumental in getting a lot of things done to improve outdoor experiences here,” Bourne said. “It’s fitting that such a useful project be named in his honor.”

Kehr died in 2016. His widow, Linda, said he would be humbled and deeply honored by the name.

“He worked hard on both projects – as chair of the county parks and recreation commission in acquiring the Railroad Point property for public use, and as a founding member of the Friends of the Betsie Valley Trail,” she said. “Though many others were involved and instrumental in these projects, Charlie was the common denominator. As the ‘connector’ who helped put these two resources together, an actual physical connector in his honor makes perfect sense.”

Over in Antrim County, GTRLC recently helped the village of Central Lake build a popular new trail on 40 acres of village-owned land. There’s a landfill and gas wells on the property, but village officials knew there was also plenty of recreation potential.

“We had the 40 acres, but what were we to do with it?” said Rob Tyler, a village council member. “The Land Conservancy provided the vision and the direction as to how to utilize these acres in the best way possible.”

As luck would have it, the conversation began when Tyler’s wife, Maggie, ran into some GTRLC AmeriCorps members at the nearby Glacial Hills Pathway and Natural Area. She realized the Conservancy might be the perfect organization to help with

the Central Lake piece, and they reached out with a request for assistance.

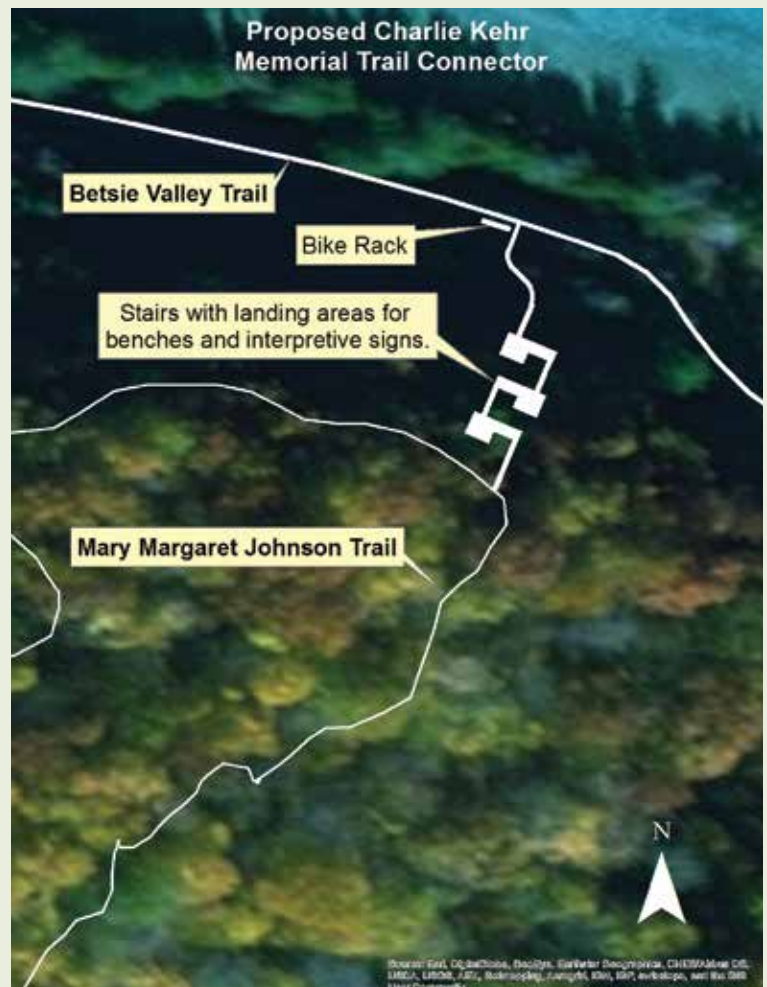
After looking at the site, GTRLC Land Stewardship Specialist Steve Lagerquist determined that the topography would be ideal for a roughly one-mile trail. He then planned the trail and helped the village apply for and receive a grant from the Health Department of Northern Michigan to cover costs tied to trail construction, signage and more.

Trail construction began in July, with local volunteer crews and GTRLC’s AmeriCorps crew doing much of the trail finishing work. The results exceeded expectations, Tyler said, as the North Street Nature Trail is already a huge hit with people of all ages.

“It’s been unbelievable. I never thought we’d have that much usage on the trail,” Tyler said. “It’s been great to see.”

Tyler and other Central Lake officials are grateful to GTRLC for its role in the process.

“I don’t think we could have done this without the Conservancy,” Tyler said. “We didn’t have the vision to plan it on our own, plus the Conservancy gave us the expertise on exactly how to do it.”





Mike Okma (left) and Chris Garrock are GTRLC's easement stewards.

# Monitoring Men

## EASEMENT STEWARDSHIP TEAM BUILDS RELATIONSHIPS, ENSURES CONSERVATION

Securing land for public recreation has always been a huge part of the Grand Traverse Regional Land Conservancy's efforts. Its expansive portfolio of preserves and natural areas offers countless opportunities to get out and enjoy the natural world that surrounds us.

But of all the land protected by GTRLC since its inception in 1991, more than half is private. And while these lands aren't available for public use, their protection benefits us all. These private protected lands safeguard water quality, preserve wildlife habitat, protect scenic views and ensure the future availability of quality agricultural land.

Most of this private land was protected through the use of conservation easements. These voluntary legal agreements permanently restrict the way land can be used, regardless of owner, in order to protect the land's conservation values. GTRLC works with the landowner to create the easement, taking into account the landowner's wishes and the Conservancy's conservation goals.

A key part of this arrangement is regular monitoring to make sure the terms of the easement are upheld. This is required not only by the Conservancy's own rules, but also by the Land Trust Alliance, which provides accreditation to GTRLC and hundreds of other conservancies across the country. And because of the tax benefits tied to easements, the Internal Revenue Service also requires regular monitoring.

**...of all the land protected by GTRLC since its inception in 1991, more than half is private. And while these lands aren't available for public use, their protection benefits us all.**

Enter Mike Okma and Chris Garrock, the Conservancy's conservation easement stewards. They are responsible for regular monitoring of more than 230 easements totaling more than 20,000 acres scattered throughout GTRLC's five county service area.

"These people protected their land because they love it, and it's really neat to be able to visit with these conservation heroes and hear their stories," Okma said. "I love hearing why they felt it was important to protect their land, and it's great to have an in-person opportunity to thank them for that decision."

Okma and Garrock work hard to build relationships with landowners. They make every effort to keep landowners in the loop, sending them notifications and inviting them to join in on their monitoring visits. Aside from the

fact that they're both friendly fellows, this relationship building is an important part of their work.

"The most important thing in terms of risk management with easements is having a genuine relationship with the land owners," Okma said. "Open communication and good relationships can help prevent problems before they occur, and all of that relationship work goes a long way if you ever get into a situation in which a potential problem needs to be resolved."

Each easement is monitored once a year, mostly during the spring and summer. Most are visited and walked on foot, and others are enrolled in the Conservancy's aerial monitoring program. Many easements selected for aerial monitoring are large properties, often with natural features that make ground access difficult or very time consuming. Those easements eligible for aerial monitoring still receive an on-the-ground visit at least once every other year.





*About two miles of Manistee River shoreline are protected by this 380-acre easement in Manistee County. Easements like this must be monitored on a regular basis.*

Although minor violations occur from time to time, the vast majority are rectified after a simple conversation with the landowner.

“People don’t usually deliberately or maliciously violate easement terms – it’s usually a misunderstanding or misinterpretation,” Okma said. “Our goal is to reach a resolution that works within the four corners of the easement and still lets the landowner meet their needs.”

Roughly 70 percent of the easements held by GTRLC were granted by people or families who still own the land, but that number is likely to steadily decrease in the coming decades as the land is sold or transferred. Although a land buyer should in theory be aware of restrictions on their land, any lack of understanding or willingness to abide by easement terms could lead to problems down the line.

“We need to be prepared for future challenges to these easements, especially as the land starts changing hands at a more rapid pace,” GTRLC Executive Director Glen Chown said. “Good communication will be even more important going forward.”

Okma and Garrock attempt to keep track of land sales involving easements, though the task isn’t easy. If they do find out about a new landowner purchasing a property with an easement, they send a packet of information and strive to get a monitoring visit set up to talk through the easement.

“Hopefully we can meet with the landowner in person that first year – that’s really important in terms of getting the relationship started on the right foot,” Garrock said.

## GET INVOLVED

If you are interested in protecting your land, visit [www.gtrlc.org](http://www.gtrlc.org) and check out our Landowner Information page. Or contact Land Protection Director Jesse Wolff at (231) 929-7911 or [jwolff@gtrlc.org](mailto:jwolff@gtrlc.org)

# Generations of Giving

## SUPPORTERS SHARE GRANDPARENTS' PASSION FOR PHILANTHROPY

In their formative years, Ed and Elyse Rogers' three grandchildren looked forward to few things more than making the trip up north to the family cottage on Elk Lake.

They swam in the lake's crystal clear waters, hunted for frogs in all the ponds they could find, gathered around bonfires and ran around on the grass until they collapsed from exhaustion. Like countless other seasonal visitors from downstate or beyond, they found the region's calming beauty and open spaces to be a welcome change from the hustle and bustle of busier urban areas.

"I brought one of my good buddies from Ohio up to Elk Lake, and he was just in awe of how clear the lake was," said Kevin Tate, who has been visiting the region for his entire life. "The natural beauty of it is like nothing you've ever seen before."

And as with so many thousands of other seasonal visitors from far and wide, a visit to the Grand Traverse Region was about much more than the abundant natural beauty. Kevin, along with his sister Amanda Baker and cousin Kaila Bryzgalski, got to spend quality time with their grandparents and with each other. In their full-time lives they were scattered across the Midwest, but they always remained connected to the cottage on the shores of Elk Lake.

"For all of us, the lake also represented family," Amanda said. "We grew up going to the lake and we always reunited there. It's a special place."

The three grandchildren are now donors to the Grand Traverse Regional Land Conservancy through their role as advisors in the Edward & Elyse Rogers Family Foundation, started by Ed and Elyse a few years ago. After all of their experiences "Up North," they felt strongly that it was their duty to help protect the

natural wonders that shaped their memories.

"We want to be able to give our children and future generations the same wonderful experience and retreat to nature that we had growing up," Amanda said. "We'd like it to stay pristine and beautiful."

Ed and Elyse started visiting the Grand Traverse region more than 50 years ago,

eventually building the Elk Lake home that became the site of so many wonderful memories. The couple has a long and well-recognized history of philanthropy, both personally and professionally.

Elyse served as assistant vice president of the Herbert H. and Grace A. Dow foundation, interim president of the Midland Area Community Foundation and on several nonprofit and business boards. Ed worked for Dow Chemical Company for nearly 40 years, serving for a period as president and CEO of Dow Chemical Japan. Like Elyse, he's also served on many boards.



*Elyse and Ed Rogers.*



They began giving to GTRLC in 1992, just a year after the organization was founded. After seeing firsthand how development can change the character of a region, they wanted to support an organization dedicated to preserving the Grand Traverse area's wild and beautiful places.

"Nature is under tremendous pressure worldwide, and anything we can do anywhere to help it is a step in the right direction," Ed said.

The grandkids grew up. Amanda is an attorney in Cleveland, Kevin works in IT in Columbus, and Kaila works in Chicago for a chemical company. In Kaila's role, she helps customers from throughout the Midwest find environmentally responsible disposal solutions for their hazardous and non-hazardous waste.

Kaila's career path was influenced by her time in the Grand Traverse region. Time spent on nature hikes with her family reinforced the importance of protecting the natural environment, and she ended up studying Natural Resources and Environmental Sciences at Purdue University before landing her current job.

"As a kid, I noticed over time how many houses were being developed on Elk Lake and Torch Lake and really how precious fresh water access is and continues to be," she said. "The outdoors is truly where I felt and feel the most grounded, and I wanted to make sure that was around for other people to experience, too," she said.

As they go on to have their own families, the value of protection seems even higher.

"We had a pretty awesome childhood, running around outside and having so much fun. I want my kids to have those same experiences and opportunities to use their imagination outside of technology," Kevin said.

**The grandchildren are proud to carry on the family tradition of philanthropy, looking to their grandparents as examples of what it means to give.**

The grandchildren are proud to carry on the family tradition of philanthropy, looking to their grandparents as examples of what it means to give.

"It's really inspiring to see how much they've given back to all the various communities they've been involved in – I don't think there's a single community they've lived in that they haven't touched in some way – and they never ask for thanks," Amanda said. "They've embraced a personal mission that with the ability to give comes the responsibility to do so, and they've passed that on to us."

Ed and Elyse are thrilled that the grandchildren are following in their footsteps.

"I'm a big believer that philanthropy is learned, it takes thought and it takes someone pointing out the value and the enjoyment of it," Elyse said. "I'm proud of the kids because they really have been so thoughtful."



Kevin Tate, Amanda Baker and Kaila Bryzgalski.

# A New Path for All

## UA TRAIL PLANNING UNDERWAY AT ARCADIA MARSH

The wonders of one of GTRLC's most ecologically dazzling preserves will soon be much more accessible for people of all ages and abilities.

Planning is underway for a Universally Accessible (UA) trail at the Arcadia Marsh nature preserve in northern Manistee County. The roughly ¾ mile trail will extend from the existing parking area along M-22 to a new parking area off St. Pierre Road.

The elevated boardwalk trail will follow and extend upon the existing footpath, which is prone to getting so muddy in spots that it can be nearly impassible. Tall plants along the existing trail also make it hard for visitors to see their surroundings, especially in the warmer months.

"Going to the marsh is super cool now, but this new trail is going to make the experience even better," said Steve Lagerquist, GTRLC Land Stewardship Specialist. "This is going to offer easy access for everyone, plus much better viewing of everything because you'll be elevated enough to see over the vegetation."

A series of bumpouts with benches, multiple elevated observation decks and three small fishing piers will add to the experience. As with the Overlook Trail at Arcadia Dunes, which opened in 2017, the entire trail will be designed to meet UA standards. Studies have shown that such trails are useful not only for people with mobility issues, but also for families with young children in strollers.

**The entire trail will be designed to meet UA standards. Studies have shown that such trails are useful not only for people with mobility issues, but also for families with young children in strollers.**

Also like the Overlook Trail, careful steps will be taken to minimize impact on the ecosystem. The trail largely follows an old narrow-gauge railroad track that supports the current path.

"Because this is such a dynamic and important ecosystem, and because there are so many sensitive habitats, we really wanted to keep this trail on the already disturbed portion of the preserve," said







*A rendering of a section of the trail.*

Senior Preserve Steward Angie Lucas. “We selected that corridor specifically because it’s already been impacted.”

Trail construction will begin after nesting season in 2018 and wrap before nesting season in 2019, another conscious effort to minimize impact. In addition, about a third of the trail will be closed every year from early April to mid-June to avoid disturbing certain sensitive species as they nest.

“We’ve been doing bird surveys since 2013, when we were first planning this trail,” Lucas said. “Based upon that data, we’ll have a seasonal closure of a section of it to minimize human disturbance.”

This trail and its amenities will allow visitors to enjoy a very special preserve that protects one of the last remaining Great Lakes coastal marshes. These marshes are nearly as productive as tropical rainforests in terms of biomass per acre, offering habitat for scores of threatened and rare species. It’s estimated that as much as 80 percent of this type of habitat that once existed throughout the Great Lakes basin has been destroyed.

GTRLC’s stewardship team, in partnership with several other organizations, has completed extensive restoration work at the marsh since acquiring it more than a decade ago. Aside from substantial invasive species remediation, one of the most important restoration efforts at the marsh

involved rerouting Bowens Creek from an old ditch back into its original, meandering channel. This added more than 3,700 feet of riverine habitat and also dropped the temperature in the creek by 10 degrees, improving habitat for trout, sculpins and other cold-water species.

As with the years-long environmental remediation process, GTRLC reached out to partners and stakeholders for input with design and placement of the new trail. Brian Allen is a member of the Benzie Audubon Club and former GTRLC board member who helped with bird monitoring in preparation for the trail.

“With the recent high water levels in the marsh, the elevated trail will make it much easier for both birders and wildlife enthusiasts to enjoy the marsh,” he said. “I am looking forward to having the platforms to gain some elevation and a better view. This may also reduce the risk of acquiring ticks and may make it more comfortable and inviting to the public.”

**It’s estimated that as much as 80 percent of this type of habitat that once existed throughout the Great Lakes basin has been destroyed.**

---

To support this project, contact Anthony Rupard at [arupard@gtrlc.org](mailto:arupard@gtrlc.org) or (231) 929-7911.

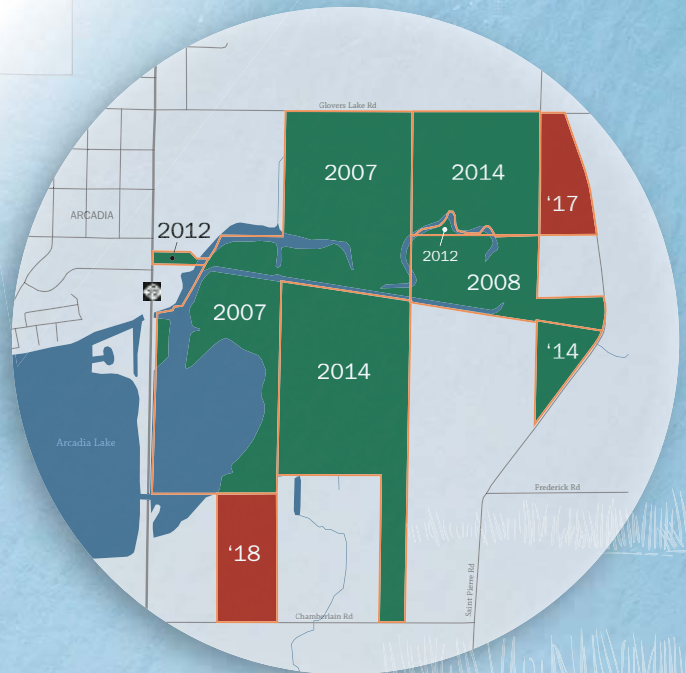
# ARCADIA MARSH

## NATURE PRESERVE

1 OF 16

REMAINING  
COASTAL MARSHES ON  
THE LAKE MICHIGAN  
COAST OF MICHIGAN'S  
LOWER PENINSULA

### ARCADIA MARSH PROTECTION HISTORY



*An estimated 80% of  
Michigan's coastal  
marsh habitat has  
been destroyed.*



Arcadia Marsh



Other Remaining Coastal Marshes



Parcels GTRLC is Actively  
Fundraising to Protect



BOWEN'S CREEK

10

DEGREES COOLER

improving habitat for  
trout, sculpins and  
other cold-water  
species





231

BIRD SPECIES

documented by  
staff and volunteers,  
including eBird  
volunteers

17

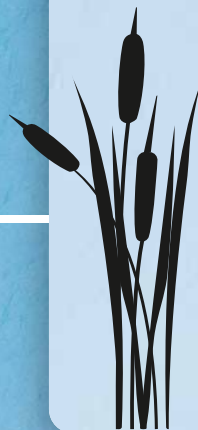
species are state  
endangered,  
threatened or of  
special concern



28

FISH SPECIES

documented by  
staff and partners



201

PLANT SPECIES

documented by  
staff and volunteers

1

state-threatened  
plant species:  
**wild rice**

305

ACRE PRESERVE

helps protect Lake  
Michigan water quality  
by filtering pollutants and  
contaminants from a  
**16,000 acre watershed**

## MARSH RESTORATION



3,700

FEET OF RIVERINE HABITAT

added when re-routing  
Bowen's Creek from an  
old ditch



6

ACRES OF SHALLOWS

constructed for wildlife  
habitat and feeding



GRAND TRAVERSE REGIONAL  
**LAND**  
CONSERVANCY



PHOTO BY CHRIS SULLIVAN

## An Extraordinary Gift

### KINGSLEY SCHOOLS TO RECEIVE NEARLY 500 ACRES FOR OUTDOOR EDUCATION

If you're looking for Boone Scharp, he's probably outside. And on most days, he'll be joined by a group of school kids eager to stretch their legs and breathe in the fresh air.

Scharp teaches environmental science and wilderness leadership at Kingsley Area Schools. On top of that, he leads a popular and very active Outdoor Adventure Club there. Talk to Scharp even briefly and you realize that few things are more important to him than getting kids to appreciate the outdoors.

Build fires. Identify edible plants. Study deer populations. Build a few wood duck houses. Just ditch the digital distractions and get out there.

"It's my whole purpose. These kids are dying for it and they don't even know it. They really don't even realize what they're missing until you get them out there," he said.

**"I'm so excited I can't  
even stand it."**

"You've got to get them outside and leave the devices behind."

These days, Scharp feels like he won the lottery. Thanks to an extraordinary gift from two sisters, Kingsley schools was the recipient of a 479-acre piece of land a short distance from Kingsley. The wild, undeveloped property is bursting with potential as a site for outdoor learning.

"I'm so excited I can't even stand it," he said. "The sky's the limit. This really is a dream come true."

And thanks to the Grand Traverse Regional Land Conservancy, the property will be protected forever with a conservation easement.

"It's going to be fabulous to have this piece of land dedicated for science and outdoor education, and of course to have it protected for generations to come," said Kingsley Schools Superintendent Keith Smith. "This is such an amazing and generous gift."

The land belonged to Huldah and Gladys Hill, both of whom were raised in Kingsley and attended Kingsley schools. Gladys died in 2011 at



**“It’s one thing to read about the outdoors,  
and it’s something entirely different for  
the kids to get out there and see it and  
experience it for themselves.”**

age 88, and Huldah died last year at 103. In their wills, the sisters instructed that the land be protected from development and transferred to Kingsley schools.

From an ecological standpoint, the land has several exciting elements. It has fen habitat, rich conifer and hard wood-conifer swamps, upland habitat, two cold-water creeks that support brook trout and much more. The fact that it’s adjacent to state land on both sides is also important from a conservation perspective, as is its large size. It’s the seventh largest of the more than 230 easements GTRLC has secured in its 27 year history.

“This is a really neat piece of land for a lot of different reasons,” GTRLC Land Protection Specialist Chris Sullivan said. “We’re grateful to have the opportunity to protect such a large piece of land that has such a variety of quality habitats.”

Many people in the community assumed the school would sell off the land to raise money, Smith said. But Kingsley is proud of its robust outdoor education programs and was thrilled at the chance to have a classroom of this caliber.

“It’s one thing to read about the outdoors, and it’s something entirely different for the kids to get out there and see it and experience it for themselves,” Smith said. It really engages the kids.”

Even if the school district were to sell it many years down the line, the land would still be protected by the conservation easement. This protection was very important to the Hill sisters, said Bob Adcock, a family friend and personal representative of Huldah’s.

“Their biggest concern was they didn’t want the land to get chopped up and subdivided,” Adcock said. “They really wanted it to be left wild.”



GTRLC and the school district worked to craft an easement that protects the land’s conservation values but still allows the district a small building envelope for potential bunk buildings or classroom space.

In February, Scharp took a group of students to the property to build and sleep in quinzhees, a type of snow shelter. They’ve also begun discussing habitat plans, building owl and wood duck houses and more.

Monique Nickerson largely grew up with the sisters, who for many years lived in a foster care home run by her parents. Education was extremely important to Gladys and Huldah – particularly Huldah – and she would have been thrilled to see kids on the land, Nickerson said.

“If they would have gifted it before they passed away, Huldah would have loved to get a ride over there just to see the kids using the property and having that experience of learning on the land,” Nickerson said. “When I heard that they were going camping on the property, I got emotional. It’s just amazing, and it’s exactly what Huldah and Gladys would have wanted.”

GTRLC Executive Director Glen Chown said he hopes the sisters’ example will inspire others to protect their land.

“This really was an act of love, both for the natural world and for their community,” he said. “Hopefully others will follow their lead, both in Grand Traverse County and elsewhere.”



*Upper Manistee Headwaters Preserve.*

## Active Project Updates

**Below are just a few of GTRLC's many active projects. To support any of these projects, or for more information, contact Anthony Rupard at [arupard@gtrlc.org](mailto:arupard@gtrlc.org) or (231) 929-7911**

### 1. Upper Manistee Headwaters Preserve

Our stewardship team continues the transition from a former Boy Scout camp to a nature preserve. We are doing trail and management planning, developing relationships with partners and neighbors, conducting more biological inventories and leading guided hikes (keep an eye on our events schedule at [www.gtrlc.org](http://www.gtrlc.org) for the latest). We won't be able to open the preserve unless we reach our fundraising goals. We have about \$2.1 million remaining on our \$3.9 million project cost.

### 2. Maplehurst

We are excited to report that we're close to closing out fundraising on this exciting project. We have less than \$100,000 to go to close out our \$1.8 million private fundraising goal. Demolition of the property's buildings will commence this spring. Prior to that, the Milton Township Fire Department will conduct training burns on three buildings. If all goes according to plan, the property will be transferred to Milton Township and opened to the public by the end of 2018.

### 3. Sand Lakes DNR Assist

We are completing environmental assessments of this 160-acre property in preparation for transferring the land to the Michigan Department of Natural Resources. We have about \$45,000 in remaining fundraising on this project.

### 4. Timbers Universal Access Trail

See Story on Page 22. We must raise about \$72,000 more for this project.

*Aerial view of Maplehurst.*







*Platte River Park.*

## 5. Platte River Park

In December, the Michigan Natural Resources Trust Fund approved a grant that will allow Homestead Township to acquire this 52-acre property for use as a public park. After negotiating with the landowner and helping the township apply for the grant, we pre-acquired the property in February and are working through environmental due diligence. Once the state legislature approves the trust fund expenditures, the township will purchase the property from GTRLC. Thank you to everyone who donated!

## 6. Arcadia Marsh Additions

In September, we added 12 acres to the northeastern corner of the preserve, extending the Preserve boundary east to St. Pierre Road. We are working on the acquisition of an additional 20 acres along the southern boundary of the Preserve that would extend that portion of the boundary south to Chamberlain Road. We hope to close on this property in February. We still need to raise about \$65,000 for these acquisitions.

## 7. Arcadia Marsh Universal Access Trail

See story on Page 14.

## 8. Maple Bay Farmhouse

We continue to put the finishing touches on our renovations to the beautiful and historic Maple Bay Farmhouse, allowing it to become a hub for our

important work. This project will not only allow us to have functional office space for field staff and meetings, but it will allow us to better engage the public about farmland protection, sustainable agricultural practices and more. We still must raise about \$75,000 for this project.



*Maple Bay Farmhouse.*

## 9. Acme Bayside Park

New gardens, universal access, a playground, beach enhancements and more are going in on Acme's shoreline, the next step in a community driven plan to provide needed public access, open views and recreational opportunities along East Grand Traverse Bay. We still must raise about \$135,000 for this project.

# Universal Access Coming to Timbers

## MICHIGAN NATURAL RESOURCES TRUST FUND APPROVES UA TRAIL GRANT

Many things combine to make the Timbers Recreation Area in Grand Traverse County's Long Lake Township a very special place.

Its central location close to the region's population center means it's only a short commute for thousands of people looking for an outdoor escape. Frontage on three different lakes – including the entirety of peaceful Fern Lake – and trails through beautiful woods and fields offer plenty to see, hear and enjoy.

But what's a simple walk for most people can be riddled with barriers for others.

"It's quite a distance from the parking area down to Long Lake or Fern Lake, which are two very popular elements of Timbers that people really want to see," Township Supervisor Karen Rosa said. "We got to thinking that that's fine for people who can walk

well, but what about people in wheelchairs, or who would like to take their children in strollers, or that kind of thing?"

Soon, people of all ages and abilities will be able to enjoy Timbers. The Michigan Natural Resources Trust Fund in December approved a \$194,400 grant for a Universally Accessible (UA) trail there. The trail will make it possible for people with mobility issues to enjoy its full beauty.

"We're just so excited to offer this opportunity to people who may have never been able to experience these things before," Rosa said.

Although all details have yet to be finalized, plans call for an out-and-back trail that will begin at the parking area and go down to Long Lake, then over to the south end of Fern Lake, ending at a small overlook and fishing platform. As with other such trails, care will be taken to make the path barrier free and within the grade required by UA guidelines, utilizing switchbacks where necessary.

In addition to taking visitors down to the water and through the woods, current plans call for the trail to go right by the striking stone and wood barns that date to when the property was a large vacation estate owned by the Chicago-based Armour family.

"I think those are so unique and will be so beautiful for people to look at," Rosa said. "It's really not something you see every day."



GTRLC is helping to raise about \$72,000 as a local match to the trust fund grant. The Conservancy will also take an active role in planning the trail construction, which likely will begin in 2019.

The Conservancy helped the township protect the natural area beginning in 2012. GTRLC negotiated with the Girl Scouts, who owned the property and ran a camp there for many years, and helped the township apply for a MNRTF grant to acquire the property. The Conservancy also found an interim buyer to hold the property during the application process and raised nearly \$900,000 in private donations to match the MNRTF grant.

Since protection, GTRLC has helped the township manage and care for the land.

“I always love working with the Conservancy,” Rosa said. “Everybody there has been so helpful and so supportive, I can’t say enough about how supportive GTRLC has been with Timbers and other projects.”

GTRLC leadership is thrilled to help with the next exciting phase at Timbers.

“This is going to take a place that is already special to a lot of people and really enhance what it has to



*Timbers Recreation Area is beautiful in all seasons.*

offer,” Executive Director Glen Chown said. “We’re really excited that the Trust Fund approved the grant and are ready to get to work helping to make this trail a reality.”

---

To support this project, please contact Kate Pearson at [kpearson@gtrlc.org](mailto:kpearson@gtrlc.org) or (231) 929-7911



PHOTO BY DANA VANNOY

*The planned UA trail will end at beautiful Fern Lake, which is entirely contained within Timbers.*

## THE MISSION

The Grand Traverse Regional Land Conservancy protects significant natural, scenic and farm lands — and advances stewardship — now and for future generations.

## THE CHALLENGE

Despite our many achievements over the last quarter century, GTRLC's mission is more important today than ever. The very attractiveness of the region's natural features, in combination with a growing economy, has generated development pressure on critical properties worthy of permanent protection. The region's growth has placed additional stress on its lifeblood of healthy land and clean waters. In a place and time that cry out for strategic conservation, the Grand Traverse Regional Land Conservancy stands ready to work with willing landowners to meet that urgent need.

## THE VISION

By continuing to protect the region's finest natural, scenic and farm lands, the Conservancy will reinforce the foundation of a priceless legacy that all of us will pass on to future generations.

## THE APPROACH





# The Busy Work of Saving Land

## A LETTER FROM JENNIFER JAFFE, BOARD CHAIR

Since our founding in 1991, the Grand Traverse Regional Land Conservancy has protected nearly 41,000 acres of land throughout our five county service area. And while each and every land protection victory is worth celebrating, it's important to remember how much work goes into the task of getting these projects to the finish line – and how much work remains once a project is complete.

Each of those land deals can take months or even years to secure. Several noteworthy projects were the result of more than a decade of relationship building with individuals or families before the time was finally right to proceed with protection. And once it's time, there's no shortage of paperwork, environmental assessments and other important due diligence for our dedicated and talented land protection team to tackle.

Once land is protected, it must be cared for. For public preserves and natural areas, that means invasive species removal and monitoring, habitat improvement and more – all in perpetuity! Where applicable, we build and maintain quality trails and constantly stay on top of infrastructure needs. Then there are the unexpected concerns – fierce weather events that down trees, unexpected pests or diseases, dumping or littering – that consume lots of time every year.

Our stewardship team fills this role, putting in long hours to ensure that the special places we protect will always be as beautiful and healthy – and in some cases even more healthy – than when we began caring for the land.

For the thousands of acres of private land protected by conservation easements, it is our duty to continuously monitor these lands to ensure conservation values are preserved. That's hundreds of in-person visits across our large service area and

countless phone calls keeping in touch with landowners (for more on our Easement Stewardship program, see the story on page 10).

Our communications team works to keep our stakeholders informed, our preserves properly signed, our dedicated volunteers engaged and active and our public events planned. The administrative team keeps the office running smoothly, allowing our dedicated professionals to get their jobs done.

We also own two working farms – Misty Acres and Maple Bay – that help us fulfill our mission in part by inspiring landowners to take the best care of their property. While we're fortunate to have these places, they are not immune to the same occasional issues encountered by anyone who owns buildings. Roofs, windows, plumbing and more need to be maintained and repaired.

And because this important work is funded by the private individuals, foundations and businesses that believe in our mission, our fundraising team is always on the go, often working nights and weekends visiting with supporters near and far to secure critical donations for our conservation projects. All the while, our Board of Directors provides the fiduciary oversight needed for our organization to remain robust and healthy for years to come.

In short, there's a lot that goes into the business of protecting land, and our well-educated, enthusiastic staff and board are always working hard to get the job done. But none of it could happen without you!

To those who have supported our incredible team as they fulfill our mission, thank you! With your help, we look forward to continuing to protect all of the things that make our region so remarkable.

## Grand Traverse Regional Land Conservancy Board of Directors

---

**Jennifer Jaffe:**  
Chair

**John Collins:**  
Vice Chair

**Greg Seman:**  
Treasurer

**Cortney Danbrook:**  
Secretary

**Kathleen Guy**

**Paul Brink**

**Betsy Calcutt**

**Don Coe**

**Ken Engle**

**Jim Huckle**

**Bob Marshall**

**John D. Paul, Jr.**

**Kevin Russell**

**Evan Smith**

**Maureen Smyth**

**Allen Taylor**

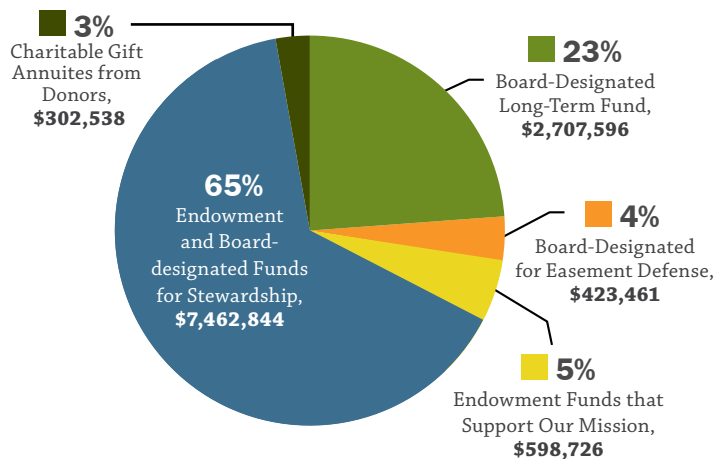
**Terrie Taylor**

---

Conservancy Directors give hundreds of hours of their time, lend considerable life experiences to our efforts, and dedicate their contributions to the Conservancy. Learn more about the Board of Directors at [www.gtrlc.org/about/board](http://www.gtrlc.org/about/board)

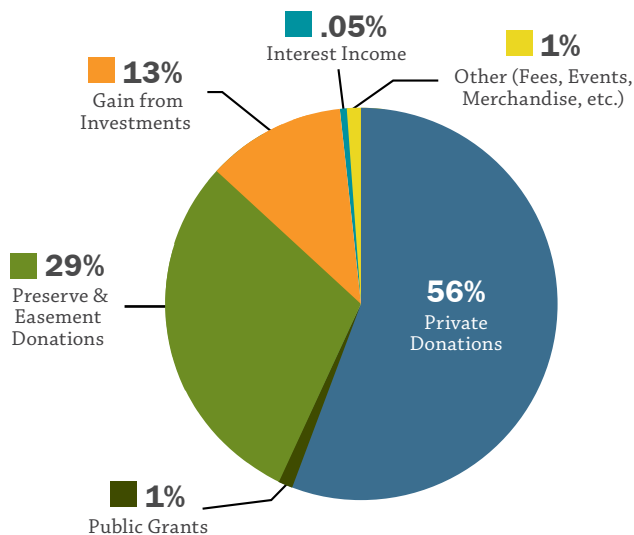
# 2016–2017 Annual Report

## GTRLC Long-Term and Endowment Funds

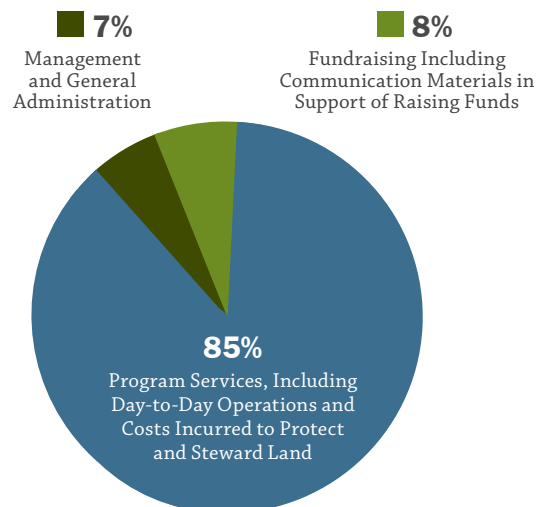


Board-Designated Long-Term Fund	\$2,707,596	23%
Board-Designated for Easement Defense	\$423,461	4%
Endowment Funds that Support Our Mission	\$598,726	5%
Endowment and Board-designated Funds for Stewardship	\$7,462,844	65%
Charitable Gift Annuities from Donors	\$302,538	3%
	<b>\$11,495,165</b>	<b>100%</b>

## GTRLC Revenue



## GTRLC Expenses





# GTRLC Consolidated Statement of Activities for the Fiscal Year

Ended June 30, 2017

	Unrestricted	Temporarily Restricted	Permanently Restricted	Total
<b>REVENUE AND SUPPORT</b>				
Private Donations	\$2,426,874	\$2,568,899	\$92,694	\$5,088,467
Public Grants	68,896	-		68,896
Preserve & Easement Donations		2,645,000		2,645,000
Gain From Investments	307,876	847,541		1,155,417
Interest Income	2,407	2,369	-	4,776
Other (Fees, Events, Merchandise, Etc.)	67,502	82,155	-	149,657
Net Assets Released From Restriction:	3,839,120	(3,801,129)	(37,991)	-
<b>Total Revenue and Support</b>	<b>\$6,712,675</b>	<b>\$2,344,835</b>	<b>\$54,703</b>	<b>\$9,112,213</b>
<b>EXPENSES</b>				
Program Services Including Day-To-Day Operations And Costs Incurred To Protect And Steward Land	5,710,207	-	-	5,710,207
Management And General Administration	461,184	-	-	461,184
Fundraising Including Communication Materials In Support Of Raising Funds	559,610	-	-	559,610
<b>Total Expenses</b>	<b>\$6,731,001</b>	<b>-</b>	<b>-</b>	<b>\$6,731,001</b>
<b>CHANGES IN NET ASSETS</b>	(18,326)	2,344,835	54,703	2,381,212
<b>NET ASSETS</b> Beginning Of Year	4,515,013	13,116,536	18,376,456	36,008,005
<b>NET ASSETS</b> End Of Year	<b>\$4,496,687</b>	<b>\$15,461,371</b>	<b>\$18,431,159</b>	<b>\$38,389,217</b>





# Donations

Your donations to the Grand Traverse Regional Land Conservancy help protect significant scenic, natural, and farm lands from development, ensuring that the most critical lands will continue to provide local food, open space, clean water, and healthy habitat, now and for future generations. You can donate with confidence, knowing that you are contributing to an accredited, effective and fiscally responsible organization.

## A Mark of Distinction

The accreditation seal **AFFIRMS** national quality standards are met.



- ✓ Sound Finances
- ✓ Strong Transactions
- ✓ Excellent Land and Easement Stewardship
- ✓ Effective Governance

PHOTO BY JACOB BOURNAY



# THE CONSERVANCY FUND

◊ Matching gift   ‡ Deceased

## JANUARY 1 – DECEMBER 31, 2017

The following donors made gifts to the Conservancy Fund in 2017. Your gifts provide the ultimate fund flexibility to protect land, steward lands that have been protected, and meet our day-to-day financial needs, enabling us to thrive as an organization and retain a talented and committed staff.

We could not be more grateful for your generous support.

### Gifts of \$25,000 or more

Anonymous (2)	Clifford and Norma Fox	Kathy Magliochetti	Wege Foundation
Community Foundation	Barry Hibben	Robert and Joyce Mims	Robert and Pauline Young
Grand Traverse Regional	Estate of Diane McDonald	Charles Stewart	
Land Conservancy	Jim and Diana Huckle	Mott Foundation	
Endowment	Family Foundation	James and Debbie Norling	

### Gifts of \$10,000-\$24,999

Anonymous	Jeffrey Cunard	Elizabeth G. and Stanley F. Dole	Mariel Foundation
Gloria and Leith Butler	David and Ellen	Alan Flory and Monica Schultz	Josephine Marquis
Harry and Betsy Calcutt	Petrack Foundation	Marcia Lee	Phillip and Nancy Meek
John and Lynn Collins	Paolo and Patty DeMaria		

### Gifts of \$5,000-\$9,999

Anonymous	Cherry Republic	Jim and Diana Huckle	Roy and Lou Anna Simon
Aultra Ventures	Don and Marylou Coe	Blair and Gordon Jones	John Robert Williams and Terrie Taylor
Beers Family Foundation	Rob and Diane Collier	Wayne and Ruthanne Kladder	Community Foundation
Rick and Elizabeth Bellingham	Michael and Rhea Dow	Ann McPhail	Ronald and Martha Yocum Family Fund
Nancy Brickman	Rich and Susan Erwin	McWilliams/Piraino Family Foundation	Community Foundation
Dan and Lisa Brickman	George Fabe Fund of the Greater Cincinnati Foundation	Royce Ragland and Kenneth Bloem	Frank R. and Faye M. Zimmerman Family Endowment
Paul and Amanda Brink	Steven and Sheila Hamp	Scott and Jennifer Rodes	
Elisabeth Case			

### Gifts of \$2,500-\$4,999

Dick and Sue Bingham	J. Bennett and Tauna Donaldson	Robert Martin	Donald and Glenna Southwell
William R. Burleigh Family Foundation	Daniel and Kristine Drake	The Mead Family Fund	Eric and Nancy Stehouwer
Dr. David and Valerie Canter	Carol Gardner	Otwell Mawby, PC.	Paul Stimson
William and Edith Christoph	Iceman Promotions, Inc.	Gary Pomeroy	Sue and Norm Ulbrich
Nancy Cotcamp	Penny and Jamie Ladd	Mr. and Mrs. Dan Prevo	Barbara and James VanDam
Joyce Delamarter	Jim Lewis	Timothy and Margaret Price	
	Lou Anne and Don Lindemann	Maureen and Paul Smyth ◊	

## Gifts of \$1000–\$2,499

Anonymous	John Hamill and Pat Temple	Gregory and Audrey Landsfeld	William Scharf
Kirsten Ardery	Nick and Susan Hansen	Philip and Judy Leege	Diana Schmiedicke
Robert and Nancy Baglan	Linda and Craig Hanson	Kathy and Tom Lehner	David and Pam Seabury
Cindy and Gary Barta	Liz Hardy and Tom Kienbaum	Jim and Kirsten Levinsohn	Nancy Seasholes
Mack and Lorraine Beers	Jack and Ruth Harris	Leslie Li and Brian Ahlborn	Gregory Seman
Brian Blood	Bill and Kirty Heald	Daniel and Mary Liechty	Patricia Sharpnack
Lois Breimeier	Will Heelan	Ross and Cathy Lillie	John and Victoria Sheagren
Norton and Mary Lee Bretz	Jack and Martha Hicks	Timothy and Jessica Lindstrom	Marion Shroyer
Robert Buckner	Thomas Hitchman and Keith Hewitt	Brad and Amy Lyman	Michael and Suzette Simpson
Michael Bukowski and Karen Kulik	Tom and Myrna Hitchman	Nancy Lyon	Skillman Foundation
Jill Byron	John and Shirley Hoagland	Jack Maddox and Janet Garvey	Evan Smith and Cynthia Anderson
Camp Arcadia	Tracy Hobbs and Eddie Sullivan	Magagna Family Foundation	Mary and William Swift
Robert Carstens	Robert and Jane Holdeman	Gregory and Lissa Magel	Nancy Swift
CNA Foundation	William and Myrna Holland	Robert and Nancy Marshall	Lester and Joanne Teague
Cone Drive/Textron	Greg Holmes and Katherine Roth	Brian and Lori Meek	Thrivent Financial Foundation
Joseph and Leslie Cook	Michael and Marsha Howard	Sladie Morrison	Jennifer Tobias and Tom McCracken
William and Paula Cordes	Catherine Hudak	Dave Murphy and Sue Peters	Paul and Nancy Tousley
Marcia and Ted Curran	Al and Julie Hurd	Mary and Paul Neustadt	Mary and Robert Treadway
Charles and Susan Davidson	Jennifer and Brian Jaffe	Cynthia and Scott Paradise	Dori Turner
Hank Dow	Community Foundation	William and Kathleen Parsons	Nancy VandenBerg
Matt and Dana Drake	Kenneth F. and Elizabeth A. James Endowment	Karl Pearson	Thomas and Kathleen Volle
Pamela Fraker	Linda and Greg Jaris	Ed and Patty Petrick	M. Sue Waltz
Leonard and Karen Franseen	Sue Johnson	Cheryl Phelps	George Warrington and Drew Gores
Douglas Gage and Cheryl Sisk	June 8th Foundation	Robert and Connie Pulcifer	Weiner Family Charitable Fund
Dan and Rachele Gartland ♦	Linda Kehr	Anne and Joseph Purpura	Brian Weisman
John and Grace Gast	Kevin Kelly	Jeffrey Puryear and Myriam Waiser	Gloria Whelan
Jeremy Gibson and Carolyn McDonald	Paul and Diane Kolak	R.M. Young Company	Mac and Marilyn Whisner
Cheryl and Luke Goodenough	Steven Kraft and Carol Burns	Carol Rabanus	Deborah and Todd Wilson
Gosling Czubak Engineering	Mark and Barbara Kuhlmann ♦	Dan Remahl	Janet Wolf
Community Foundation	Jackie and Bob Kunnen	Gary Richardson and Cheryl Gross	Andrew and Noelle Wolff
Robert T. Hughes Endowment	Jayme Lahut and Davin Robinson	Pug Rundio	Mark F. Woodward
Community Foundation		Pat Sawin	Dennis and Jan Wyckoff
LouAnn's Endowment for Women's Leadership			
Ward and Margaret Griffen			

## Gifts of \$1–999

Dwain and Christina Abramowski	Catherine Alfred	Nicoline Ambrose	Anonymous (31)
Jeff Ackerman	Brian and Maripat Allen	American Endowment Foundation	Frank Anzalone
Jay Adams	Judy Allen and Patrick Ginley	Mark and Kris Ammons	Bob and Molly Appleford
Keith and Carol Adler	Robert and Jane Allen	Joe and Kathryn Anderson	Elizabeth Arendshorst
Kirk and Cathy Agerson	Dan and Jane Allensworth	Sallee and Thomas Anderson	John Arevalo and Gloria Torello
Pat Ahlberg	Allied World Assurance Company	William and Paula Anderson	Hal and Kathryn Armstrong
Bernadette and Peter Albers	James and Jane Alstrom	Gary Andrew and Jean Braxton	Jon and Mary Armstrong
Kimberly Albright and Michael Dow	Alward, Fisher, Rice, Rowe & Graf, PLC	Janine Andrew	Richard and Janice Arnold
Ethel Aldridge	Amazon Smile Foundation	Larry and Sharon Andringa	Susan Arnold and Ralph Poelling



Christine Arvidson  
and Henry Doss  
John and Nancy Ashton  
Fred and Jean Auch  
Richard and Patricia Austin  
Jeremiah and Kristi Avery  
Mae Ayers  
Jerry and Annette Babb  
William and Jennifer Baguley  
Randall Baidas and  
William Reeves  
Gary and Janet Baillo  
Walter and Marilyn Baird  
Nick and Shirley Baker  
Dianne Baker-Hale  
and Calvin Baker  
Peter and Kristine Baldo  
Mark Baleja  
Nicolaas and Rhonda  
Ballintyn  
Michael and Denise Balon  
Keith and Kelly Bandli  
Bank of America  
Matching Gifts  
Mark and Elizabeth Banker  
Mark Baranoski  
and Emily Eby  
Mark and Karen Barbera  
Douglas Bard  
Rachel and Gentry Barden  
William Bardens  
Brooks Barnes  
Peter and Karen Barnes  
Robert and Gail Barnes  
Tom Barnes  
Kevin Barre  
Barris-Blair Families  
Mark and Renee Bartell  
Martha Barton  
Butch and Elizabeth Bartz  
Harriet Batson-Benson  
and James Batson  
Joan Bauer  
Bill and Gail Baughman  
Donna Bauman  
Mark and Kathleen  
Baumhardt  
Janet and Judith Bay  
Bay Area Contracting  
Bay View Flooring  
Anthony and Susan Baynard



PHOTO BY NATE RICHARDSON

Michael and Patricia Beach  
Rebecca Beach  
Dan and Holly Beachum  
Bill and Marti Beals  
Elaine Beardslee  
Ken Beck  
Anton Becker  
Joy French Becker  
Sandra and Mike Becker  
Nancy and Timothy Beeler  
Ernie and Mary Behnke  
Reverend Ted Beiderwieden  
Robert and Carol Beidler  
Jean Bell and  
Catherine Mullin  
Mary Ellen Bell and  
Randy Smith  
Norman Bell and Gail Parry  
Sally Bell  
Travis and Joan Bell

Bell Title Lakeshore  
Marcia Bellinger  
and Irv Stoner  
William and Sharon Bellinger  
John Bellingham  
Marc Bendick and  
Mary Lou Egan  
Rosemary Benedetti  
Eric and Anita Bennett  
Dennis and Marilyn Benson  
Roger and Kathy Benson  
Steven and Constance Benz  
John Beranek and Karen Park  
Rosemary Berardi  
Bercini Family Foundation  
Eugene Berg  
David Berge  
Jay Berger  
Bruce and Kathleen Berghoff

James Bergman and  
Penelope Hommel  
Ralph and Lynda Bergsma  
Mark and Cynthia Berley  
Lenore Berlin  
Marjorie Berndt  
Arleta Bernson  
Alison Berry  
Barbara Berry  
Barb and David Bersuder  
Warren and Barbara  
Berthelsen  
Maryellen and Robert Bieder  
Barb Bierlein and Tom Dillon  
Audra and Nathan Bildeaux  
John and Jan Biliti  
Dr. Charles and  
Mrs. Maria Bill  
Don and Bonnie Bills  
Tim and Mary Binder

## Gifts of \$1–\$999 — *Continued*

Ron and Stacey Bing	Mary Bramlage	Virginia and Nancy Burt	The Castleberry
Keith and Ethel Birchler	Marilyn and Arthur Branco	Bruce and Rhoda Bush	Driscoll Family
Susan and Sanford Birnholtz	Bruce Brandt	Margaret Bushnell	Virginia Cates
Brent and Teresa Blackwelder	Anne Brasie	Eric and Kelly Buth	Vernette Cauchy
Kenneth Blakey-Shell	Richard and Marty Brauer	Linda Butka and Bryan Olshove	Russell and Vivian Cecil
Donald Blewett and Ann Wilson	Jim and Mary Jo Braun	Susanne Buxton	Fred and Michelle Cepela
Peter and Eleanor Blitzer	Dr. Dan and Jeri Lynn Braunlin	Jon Bylsma and Jennifer Johnston	Mark Cerny
Wes and Sharon Blizzard	Eric Braverman	Michael and B.K. Byrne	Diane and Everett Chambers
Carolyn and Richard Block	Carol Breimeier and Family	William Byrne and Lois Veenema Byrne	William Champion and Beverly Pylman
Tim and Cheryl Bloomquist	Dave and Marcia Bremer	Robert and Sue Cain	Beth Chan
Margaret and Steve Blouw	Joyce and Robert Brenner	Nikki and Christy Cairns	Charles and Jeannie Chapin
Dale Blum	Susan Breuer	Elizabeth Calcutt	Noreen and James Chapin
John and Karen Boals	James Brewer and Leslie Littlefield-Brewer	Evan and Virginia Calkins	Jan Chapman
Boccia Family Foundation	John and Phyllis Brewster	Stephen Calkins	Stephen and Jeannine Chapman
James and Gayle Boecker	Bob and Nancy Brick	Tim Calkins and Carol Saltoun	Michael Chetcuti Foundation
Dale and Lynne Boersema	Tim Brick	Michael and Nancy Call	Michael and Susan Chesney
Marilyn Boger	Charles and Pamela Brickey	Sandra and Layne Cameron	Linda and David Chesterfield
Gilbert and Anne Bogley	Bruce and Marilyn Bridges	Bruce and Linda Campbell	Carol and Fred Chidester
Earl Bogrow and Julie Upp	Carl and Ruth Brighton	Donald and J. Elaine Campbell	K. Ross and Helen Childs
Colin and Margaret Bohash	Jim and Candy Brody	Douglas Campbell and Sandy Robey	Leslie and O. Ann Chinn
Eric and Lou Ann Bohman	Alec Brooks	Frederick and Denise Campbell	Marty and Carole Chirgwin
Linda Boldizar	Joe and Elise Brooks	John and Mary Campbell	Eric Chown and Rachel Beane
John and Susan Boles	Elizabeth Brouwer	Maureen Campbell	Glen and Rebecca Chown
Paul and Karen Bolhuis	Gary and Beverly Brouwer	Paul and Carole Campbell	Roberta and James Chrestensen
Roberta and David Bolig	Esther Brown	Robert Campbell	Sharon Christensen
Nena Bonadarenko	Frederic and Carolyn Brown	Thomas and Dianne Campbell	Helen and Steve Christian
Michael Bonnell	Kelly and Steven Brown	Ellie Canfield	Norman and Laura Christopher
Joan and Alfred Bonney	Larry and Connie Brown	Thomas and Amy Capua	Bill and Karin Chung
The Book Store	Lee and Richmond Brown	Paul and Jean Carlson	Lou Ann and Robert Churchill
Norman Booth and Gail Zink	Robert L. Brown	Edward Carmien	Mary Anne and Richard Civiok
Boride Engineered Abrasives	William and Beatrice Brown	Margaret Carmody	Jody and E. Terry Clark
Donna Boris	Eleanor Brownell	David and Marcia Carney	Kelly Clark
Lillian and William Borland	Larry and Lori Brownell	James and Kathy Carney	Pete and Shari Clason
Andre and Jamie Borrello	Dawn and Daniel Bruce	David and Donna Carpenter	Todd Clason
Rosaleen and Richard Borton	Richard and Carolyn Brunelle	Kathleen Carpenter	Lawrence and Marykae Clayton
Susan Bosler	Liz and Peter Bruning	Brad and Beth Carrington	Joanne Cleaver
Kenneth and Jennifer Bosma	Herb and Dee Bucholtz	Timothy Carroll	Robert and Lucinda Clement
John Bowers	Janet and Bill Buck	William Carroll	Larry and Julie Clingman
Bowers Harbor	Marilyn and Jack Budrow	Neil and Mary Carter	Donald and Nancy Clover
Vineyard & Winery	Art and Allie Bukowski	James and Holly Cartwright	Timothy and Mary Clulo
Bernadette and Gary Bowker	Deborah Bunker	William and Sandy Cartwright	Dotti Clune and Jill Henemyer
Jeff and Barbara Bowlby	Marilyn Burfiend	Sally Casey	Julie Clynes
Guy Bowman	Matt Burke and Teresa Krieger-Burke	Ginny Cashbaugh	Daniele and Michael Cobb
Connie Boyd	David and Linda Burkey	Felix Casillas	Sara Cockrell
Jeanne Boyd	James and Barbara Burkholder	Richard and Tracey Cassard	Joyce Cody
Gloria and Jerry Boyd	Craig and Martha Burns		Robert and Debra Coffey
John and Linda Bozzelli	Doug and Susan Burns		
Margaret Brace	Burritt's Fresh Markets		
Curtis and Donna Braden			
Ed and Jennifer Bradford			



Richard Coggeshall	Garry and Marlene Curtiss	Kevin Diels and Jane Damschroder	Chris Earle and Donna Roy
Bob Cohen and Kathleen Abate	Beverly Cuthbert	Virginia Dike and Ijeoma Dike-Young	Jeanine Easterday
Coldwell Banker Schmidt, Realtors	Diane Dabich	Carole and Richard Dills	Lois Eaton
Henry and Bonnie Cole	George and Pat Daisy	John Dillworth	Diane and Robin Edgington
Thomas and Barbara Cole	Don and Arlene Daley	Robert and Donna Dinkmeyer	Shirley and Paul Edmond
William and Joanne Cole	James Dalley and Lois Brennan	Robert and Barbara Disse	Carol and Fred Edmonds
Clare Coles	Daniel and Gail Dall'Olmo	Larry and Eileen Dittmar	Gary and Ann Edwards
Jimmie and Melissa Colflesh	Raymond and Julie Daly	Michael Dively	Jeanne Edwards
Cynthia E. Collins	Cortney and Chris Danbrook	Larry and Donna Dodd	Ned and Barbara Edwards
Michael and Carolyn Collins	Lucia Danes	Howard, Elizabeth and Haley Dole	Phil Edwards and Laura Reid
Stella Collins	Nancy Dash and Cheryl Thompson	William and Linda Dolinski	Ronald and Michelle Edwards
Ralph and Charlotte Collyer	Tim and Laurie Daum	Aileen Dombrowski	Trina Edwards
Lois and Fernando Colon	David Webster Construction	Nancy Donald	Werner Egger
Eleanor Comings	Robert and Jacqueline Davidson	Jean Donaldson	Scot and Jilanne Egleston
James and Dorothy Compere	John and Edith Davies	Dooge Veneers, Inc.	Sandra Ehlers
Jane Conard	Michael and Dixie Davis	Jill Dooley and Annette Brown	Ted and Andy Ehlert
Dan and LuAnn Condon	Joseph and Barbara Day	Ron and Carol Dooley	Kathy and Don Ehrenberger
Janet and Robert Condon	Robert and Arlene Dean	Walter and Lynn Dorfstatter	Donald and Sally Eichberger
Kathleen Connell and Dave Peters	Sharon Dean	Robert Dost	John Eikost
Rick and Karen Conrad	Lois DeBacker	Robert Dotterer	Timothy and Irene Eiseman ◊
Nancy Cook	Ann and Richard DeBoer	Dick and Guyla Doumanian	EJ USA, Inc.
Robert and Karin Cooney	Graydon and Sherri DeCamp	Katherine and James Downer	Elk Rapids Garden Club
James and Darlene Cooper	Alice and Jerry Deck	Lester and Natalie Dragstedt	Doris and Rick Ellery
James Cooper	Joan Dedo	Claudia and Ken Drake	Charles Ellinwood
John Cooper and Sally Blackburn	Ellen Dehm and Catherine Adler	Ann Dressel	Kristen Elliot and Perry Harmon
John Correia	Jen and Ryan Deisler	John and Charmaine Dressler	Marjorie Elliott
Andrew Correll	Elsa Della Torre	Drew Smith Photography	Mark Elliott and Heather Kingham
Barbara and Bob Coulter	Margaret Delorme	John Driscoll	Frank Ellis
Lew and Ginny Coulter	Anita DeMarco Goor	Richard Druffel and Catherine Nally-Druffel	Phil Ellis
Michele Counsell	Nancy and David Denison	Earl and Anne Dryden	Nancy Elwood
Carol and Howard Cousineau	Shirley and Terry Denman	Dale and Anna Ducommun	Robert Ely
David and Glenys Cowperthwaite	Bill and Sandy Derman	Steve and Betsy Duede	Neal and Margaret Elyakin
Kenneth and Cynthia Cox	Kent and Victoria Des Jardins	David Duggan	Dorothea and Bill El-Yasir
Thomas Crampton	Deborah and Craig Desmet	Georgette and Dan Dulworth	Ed and Ann Emenheiser
Charles and Susan Crawford	Doug and Margo Detzler	Robert Dunbar	Todd and Michelle Emery
Clan Crawford	Larry DeVergilio	Sylvia Duncan	Tom and Diane Emling
Helen and Gary Crawford	Michael and Ann DeVries	Cheryl and Bill Dundon	Endoman Promotions, LLC
Jennifer Crossen and Joan Callahan	Roger and Helen Dewey	Roger and Angelica Dunlap	Joyce and Mike Enlow
Jane Crowner	Paul and Christine Deyo	Don and Sally Dunlop	Alice Entwisle
Tom and Judy Croxton	Charles and Lorie DeYoung	Tom and Sarah Dunn	Lawrence Epple
Barbara Crumpton ◊	Harold and Edna DeYoung	Marissa and Manny Duque	John and Gina Erb
Cullen Family	Stephany Diana	Rod and Joan Durgin	Gerri Erickson and Margaret Platner
Hugh and Barbara Culton	Karen Dick and Ramona Jesse	Frank and Shirley Durham	Bill and Gail Ericson
Ruth Cunningham	William and Roberta Dickie	Robert Dyke	Raymond Erlandson
Janice and Jed Curtis	David Dickinson and Jeannine LaPrad	David and Dianne Dykstra	Dan and Joy Ernst
Karol Nelson Curtis	Nancy Dickinson	Theresa and David Dysarz	Timothy Esser and Linda Blakkan
		Sybil Markey Eady	Cathy Eubanks
			Chad and Monica Evans

## Gifts of \$1–\$999 — *Continued*

Frank Even	Bud and Nancy Foster	Linda and Lee Gerard	Michael and Christine Gravlin
Tamara Everett	Bob and Ruth Fountain	John and Ann Gerhardt	Barbara and Bob Gray
Roger and Carol Faber	Nancy Foust	Earl and Maud Gervais	Judith Greaves
Charles Fahlgren and Kay Harley	Bruce and Martha Fox	Hilary and John Gessner	Thom Greene and Nadeen Kieren
Garry and Barbara Faja	David and Martha Frank	Thomas Getz and Margaret Burrows-Getz	Arthur and Susan Greenlee
Fred Farage Jr. and Carl Strebel	DeAnne and Todd Frank	David and Helene Gidley	Lorne Greenwood
Saeed and Dorothy Farhat	Linda Frank and Klaus Lehrer	James and Lisa Gies	Bruce & Erica Greer Family Foundation
Judith Farley	Lora Frankel	Marc and Pauline Gilbert	Christopher and Marlene Griffin
Tom and Linda Farrell	Mary Franklin	John and Barbara Gillen	Family of Robert and Jane Griffin
Terry and Kim Farrugia	Lisa Franseen	Bill and Jayne Gilligan	Jo Grindem
Gary and Elizabeth Fazzio	Don and Nancy Fraser	Gillison Excavating, Inc.	David and Laura Groenke
Gregory and Nancy Fazzoni	Charles and Julie Frayer	Jerry Gillissen	Marjorie and Richard Groenwald
Harless Feagins	Joe Frederick and Emily Cook	Michael Gillman	Michael and Anne Groleau
Roche and Leslie Featherstone	Ginny and Carl Freeman	Mark Gilmore	Nancy and Richard Grote
Tim and Ellie Feddersen	Suzanne Freshour	Francis Gingras and Jacqueline Merta-Gingras	Helen Grove and Theodore Wagenaar
David Feenstra	Madelyn and James Frick	Robert and Joyce Gingras	Evelyn Gryson
Lois Feichtenbiner	George and Maiga Friess	Cliff and Susan Girard	Hans and Linda Gundersen
David and Pamela Feidner	William and Nancy Fronk	William Gittlen and Sarah Campbell	Sharon Gunn
Fenner, Melstrom & Dooling, PLC	Roger and Karen Frueh	Robert Glassman and Jennie Lieberman	Ronald Gurdak and Susan Mohr
Mary Ferens	Andrea Fry and John Floyd	Robert and Margaret Glover	Lionel and Carol Guregian
Juliana Fernandez	Carlton and Rondi Fry	Mary Joan and James Godfroy	Sarah Lutes and Linda Guthrie
Joan Ferrari	Erin Fry	Barbara and Theodore Godleski	Werner and Marianne Gutknecht
David and Toni Ferris	Margaret Fry	Matthew Godlewski and Jacob Whitman	Kathleen and Mark Guy
Ferson Creek Fund	Stephen and Susan Fry	Christine, Jeff and Tom Goebel	Daniel and Anne Guyton
Joe and Marianne Fields	Joel and Lucille Gaff	Kenneth Goebel	Emily Guziak
Bob Finch and Melissa Lain-Finch	Richard and Rebecca Gagnon	Lita Goess	Jan and Dave Gwinnell
Beverly and Jim Finlayson	Peter and Patricia Gaines	Wesley and Lorene Goff	Christine Haack and Mark Hood
Charles Finley	Stephen and Gloria Gainsley	The Gold Family Fund	Salim and Geraldine Haddad
Ethel Fischer	Nancy Gallagher and Robert Longman	Lois Goldstein and John Heiam	Carol and Dale Haddon
Jane and Steve Fish	Gary and Victoria Gallup	Warren and Susan Goodell	Rick and Chris Halbert
Brian and Vera Fisher	Paul Gambka	Doug and Karen Goodkin	Michael and Mary Haley
Joe Fisher	Robert and Christine Gamble	Jack and Liz Goodman	John and Genevieve Hall
Ryan, Kelly, Maya and Reese Fisher	Mike and Ruth Gannon	David and Terri Goodwin	Randy Hall and Lori Andrzejewski
Ron and Mary Fitch	Philip and Lois Gannon	T. James and Marilyn Goodwin	Gail Halliday and Tim Laney
David and Carol Fleisher	Karen Garber and John DesMarais	Christopher Gores	David and Judith Halsted
Tamurla Fletcher	Martha Garber	Eleanor Gorman	Frederick Hambly
Diane Florkowski	Lee and Carolyn Gardner	Andrea and Wayne Goryca	Robert and Elizabeth Hamel
Susan Flynn and Jeff Corwin	Sallie Gardner	Gourdie-Fraser, Inc.	Diana Hammond
David Foley and Margaret Willman	Heidi Garrahy	Chuck Grabiell and Connie Armstrong	Edward and Jeanne Hammond
Michael and Mary Foley ♦	Clay and Linda Garrett	Jeffrey Graft	Nancy Hammond and Tim Wolf
George and Mary Ford	Caroline Garrick and Janice Newhouse	Grand Traverse Regional Community Foundation	Don and Meg Haney
Richard and Susan Ford	Susan Garrison	Georgine and Tom Grapes	Dennis and Barbara Hansen
Margaret Forgione	Tom and Karen Gartland		
Ruth Forrest	James and Lauri Gartner		
Linda Forster	David and Cheryl Garvin		
Andrew and Sharon Foster	Donald F. and Joanne E. Gatz		
Barry and Julie Foster	GE Foundation		
	Douglas and Shirley Gembis		
	Mark and Mary Beth Gentry		



Gerry Hansen  
Harold S. Hansen & Naomi  
H. Bodenstab Foundation  
Joanne Hansen  
Lyle Hansen  
Barbara Hanson  
Diane Hanson  
William and Kathleen  
Hanson ◊  
Don Harbold  
Leslie Ann Hargett  
Frances Harju  
Sid and Elizabeth Harkema  
Donald and Barbara Harmer  
Robert and Carol Harmon  
Rena Harold and  
Linda Loewenstein  
Barry and Evelyn Harper  
Mark and Cathy Harrell

Dave Harrison  
Cornelia Hart  
Gary and Beth Hart  
Jim, Dave and Jenn Hart  
Joanne and John Hartmann  
Louise Hartung  
Amelia Hasenohrl  
Louise and Larry Haskett  
Christine Hassett  
Floyd and Jana Hassett  
Charles Hathaway  
David and Margaret Hauser  
Bethany and Robert Hawkins  
Jon and Peggy Hawley ◊  
Gary and Allison Haworth  
Jill Hayes  
Healthcare Business Media  
James Heddins and Donna  
Bartholomew-Heddins

Colleen Heflin  
Robert and Barbara Heflin  
Geoffrey and Mary Heidbrink  
Paul and Cathy Heidel  
Charlene Heim  
Jerry and Jamie Heim  
Jerry and Barbea Heiman  
Alison and Conrad Heins  
Laura and Scott Heintzelman  
Nancy and David Hejna  
Gregory Hekel  
Bruce Henderson  
Carolyn Henne  
Bill and Ann Henning  
Sandra and Mark Henschell  
Penny Hergenroeder  
Sharon and George Hermach  
Lynne and Jose Hernandez

Walter Herrick  
C. Richard and Susan Herrold  
Michael and Sharon Herron  
Roger Hersey and  
Shelly Bryde  
William and Debra Hershey  
Carol Hess  
Phil Hess and Stephanie  
Blatchley  
Doug and Martee Hickman  
Paul and Ruth Anne Hickman  
Joyce and Garland Hicks  
Ann and Don Highlands  
Jim Highsaw  
Cheryl and Richard Hiipakka  
Sid Hilderley  
Bruce and Anne Hildreth  
Audrianne Hill and Misti Trap



## Gifts of \$1–\$999 — *Continued*

Philip Hill and Elizabeth Rodgers	Dawn Humphreys	Darcell and Mark Johnston	Donald and Barbara King
The Hilliards	John Hunt	Jill and Ron Johnston	Darrell and Shirley Kinnan
Bruce Hilty	Eileen Huntzicker	David and Nancy Jones	Kevin and Kimberly Kinnan
Dr. Kristina Hindert and the Honorable Ronald Nehring	Susan Huntzicker ♦	Joan Jones	Lewis and Char Kirchner
Alan and Elizabeth Hindmarch	Mary and Robert Hurley	Michael and Linda Jones	Marvin Kirsh
Jean and William Hines	Hurley Investment Counsel LTD., INC.	Molly and William Jones	Joyce Kirshner and Frances Wyatt
Daniel and Susan Hintz	David and Patricia Hutchins	Tom and Jeanne Jorgensen	Tom Kirwin
Don Hirt	Amy Hutchinson	Linda and William Joseph	William Kirwin
Richard Hitchingham	IBM Corporation	Philip and Susan Joseph	Rhea Kish
Michael and Janet Hluchaniuk	John and Kathy Imboden	Terry Judd	Tom Kladzyk
Steve and Becky Hobig	Dean and Kurt Iverson	Cynthia and Allen Julian	Phoebe and Anthony Klain
David and Liane Hodgman	Isabel Jackson	Susan and Chuck Julian	Len and Connie Klein
Melissa and Chad Hoepfner	James Jackson	Junior Achievement Up North Bundles	Marty and Anita Klein
William and Suzanne Hoff	Laurence and Barbara Jackson	Juniper Garden Club	Valerie Klein
James and Virginia Hoffa	Mark and Debra Jackson	Thomas and Sarah Juntune	Molly and Charles Klettner
John and Florence Hoffmann	Ronald and Janet Jackson	Raymond Jusick	Jack and Jan Kline
Steve and Annie Hogler	T. Michael and Joan Jackson	Charles and Mona Kalil	Phil and Margaret Knapp
Mary and Chris Holcomb	Paul and Laura Jacobson	Marilyn Kamp	Jerry and Sharon Knoppow
Marie and Doug Holem	Rosalind Jaffe	Linda Kao	Barbara Knuth
Thomas and Carol Hollowell ♦	Mr. and Mrs. John Jahoda	Carol and H. Peter Kappus	Susan Koenig
Charles and Susan Holmes	Calvin Jamieson	Elizabeth and David Karczewski	Don Kogut and Ann Standke
Jo Holmes	Bill Jamnick	Claire and Jesse Karner	Bob and Donna Kondek
Marie and Daniel Holmes	Joachim Janecke	Lisa Karriveau	Charles and Susan Konieczny
Karen Holstad	Patricia Janick	Robert Kasperek and Lynn Formanczyk	Donald and Susan Koontz
Carolyn Holt	Mary Janik	Brian and Angie Keas	Steven and Kathleen Kopitz
Gary Holt	Lee and Shirley Janssen	Marilyn Keil	Lorna and Bryan Koscielny
Walter Hooper	Jennifer Jay and Evan Johnstone	Dean Keiser	Richard Kosinski and Deborah Ochs
Jennifer Hopkins	David and Christine Jaymes	W. K. Kellogg Foundation	Mark and Eileen Koslen
Mel and Marlene Hopp	Marti and Steven Jeffs	Anne Kelly	Mark and Debra Kosowski
Brad and Jan Hopwood	Gerald Jehle	Charles and Delores Kelly	Cynthia and Allen Koster
Virginia Horton	Janet Jehle	Joe and Donna Kelly	James and Karen Kowalski
Mary Hotson	Hollis and Karen Jencks	Patrick and Mary Kelly	Carol Kozelka
Mark, Cora, Stephen, Alli, Tracie, Jason, Lauren and Chris Houghan	Thomas and Jane Jenkins	Sue and Patrick Kelly	The Joe Kozlowski Scholarship Fund
Linda and Bill Householder	Mary Lou and Thomas Jennette	Ellen and William Kelso	Ted and Jeanne Kraimer
Lynette Houtman	Mark Jensen	Cliff and Kathy Kelto	Walter Kraimer
David and Sandra Howard	Phyllis Jenson	Sharon and James Kerfoot	Anthony Kramer and Barbara Bailey
Edward and Joyce Howard	David Jeschke	Karen Kerrigan	Beryl Krasner and David Bradley
Dan and Katherine Howell	Elizabeth Jessup	Ron and Bonnie Kershner	Eileen Kreiner
James and Dawn Hubbell	John and Patricia Jimenez	John and Donna Kessler	Charles and Dinah Kretschmer
Carol Hueller	John and Joanne Johnsen	Jo Keusch	Jean and Walt Kretzmann
Henry Huffman	Amy Johnson	Wendell Kevwitch	Amy Krigbaum and Phillip Conroy
Michael and Lesa Huget	Barbara Johnson	Dale and Theresa Keyes	Carol Krigbaum
Leo and Sharon Hughes	Bruce and Margie Johnson	Phyllis Kidd	Jeff Kroeger
Nancy Hulka and Duane Dunlap	Gary and Carol Johnson	Connie and Thomas Kiessel	Dennis and June Krus
John and Wilma Hultman	Karol Johnson	Janet Killian	Karen Kuehlhorn
	Keith and Claudette Johnson	Douglas Kimble and Priscilla Walmsley	
	Kim and Margaret Johnson	Dennis Kinder	
	Ronald and Sharon Johnson	Carol and Robert Kindt	



David and Teri Kuffner	John and Cynthia Lhost	Barbara and Rudy Macander	Monte and Nina Mayes
George and Betty Kuhn	Zach and Misaeng Liggett	Hedges MacDonald	Pauline Mayo
Johanna Kuieck	Lisa Lightfoot and	Mary MacDowell	Jeffrey and Mary Mazure
Jerry and Judy Kulka	Marshall Rugg	James and Christina	Tom and Carolyn McAnallen
Susan and Duane Kullberg	Marilyn and Tony Ligi	MacInnes	Lucy McArtor
Jeff and Kelly Kurburski	Jim and Jan Lindner	Susie Mackay	Richard and Florence McBrien
Rodney and Christine Kurtz	Lance and Mary Lindwall	Gary and Shirley Madden	John and Havala McCall
Stanley Kurzman	Gerald Linn and	Richard Maddin	Beverly McCamman
Jeannette and Jeffrey Kyff	LuAnn Orbeck	Dan and Kara Madion	Paul McCann
Janet Lacoste	Scott Lint	Peter and Anne Magoun	Suzanne McCarthy ◊
Pamela and David Lagattuta	Dency Lippert	Gerard and Jean Mahoney	Kathleen and Thomas
James Lagowski	Barry and Linda Lishawa	Bill Main	McClanaghan
Bruce and Andi Laidlaw	Gary and Sharon Lloyd	John and Sue Ann Makinen	Richard and Johanna McClear
Mr. and Mrs. Hugh H. Laird	Thomas and Lucy Lloyd	Dianne Malesko	Jack McClellan
Vernon and Tina Lalone	Wayne and Terry Lobdell	Roger and Aimee Mali	Meredith McComb
Lois Lamb	Ryan and Logan Lockman	Dan Maloney and	William and Joan McCool
Karen and Tim Lambert	Robert and Susan Lockwood	Barbara Soricelli	Will and Carole McCord
Martha Landis	Matthew Lohrentz	Tad and Brenda Malpass	Lawrence and Margaret
Theodore and Natalie Lanham	Lynne Lombard	Barbara Manning	McCormick
Craig and Susanne Larrabee	James and Donna Long	Michael and Mary Manning	Christy McCreary
Daryl and Brian Larsen	James and Miriam Longcore	Pete and Mary Mantei	Allen and Midge McCreedy
Lynn Larson and Paul Christ	Ellen Longmire and	Jon and Mary Ann March	Bob and Lisa McCrie
Marilyn Doty Larson‡	John Glatzmaier	James and Evelyn Marchio	Cookie and Dick McCullough
John and Mary	Catherine Look	Gary Marek and Mary George	Michael and Patricia
Anne Larzelere	Dale and Judy Lopus	Joseph and Norma Mariage	McDonald
Harold and Pamela Lassers	Staton and Carol Lorenz	Tracy and Sandra Mariage	Michael and Sandra
Joey and Marilyn Latterman	David and Beverly Lotz	Kenneth and Jo Marks	McDonald
Cynthia Lattin	J. Ron Lovasz	Richard and Lori Marl	Patrick and Coleen McDonald
Margaret Laubach	Mildred Nora Love	Lee and Pauline Marmion	Matt and Ann McDonough
Dorothy Laufer	Katie Lowran	George and Carol Marsh	Kurt and Donna McDowell
Ann Laurimore	Dwilla and Clarence Lubahn	Jamie and Barbara Marsh	Brad and Carolyn McFarlane
David and Jane Lawrence	Nancy and John Lukasiewicz	Barbara and John Marshall	Chloe and Keith McGehee
Hazel Lawrence	John and Barbara Lund	Robert Marshall	John McGilliard
Eleanor and Donald Layman	Phillip and Usha Lundberg	David and Nicole Martin	Kevin and Barbara McGraw
Elizabeth Leavens	Cliff and Jo Lundeen	Dirk and Mary Martin	Michael and Susan McIntyre
David and Marty	Ben and Sally Lundquist	Henry and Ginny Martin	Patricia and Timothy McIsaac
Leavenworth	Charles Lundstrom	Joseph and Marilyn Martin	Lawrence and Joan McKay
Virginia LeClaire	Bruce Luoma and	Gerald Martineau	Dan and Lucy McKeen
David and Patricia Leege	Tammy Hagerty	Leon and Shirley Martuch	Dave and Debra McKeon
David and Rebecca Leege	Richard and Karen Luther	Charlotte Marx	Jennifer McKervery ◊
John and Darlyne Leete	Karen and Nicholas Lygizos	Bill and Lorna Mason	Peter and Julie McKnight
Bruce and Janine Lehmann	Gregory and Susan Lyman ◊	Lawrence and Lorna Massa	Jane McKune
Joseph and Betty Lepak	Jeremy Lyman	Dave Mathews	Thomas and Shirley
Bertram and Mary Lerchen	Rebecca Lyman and	Emily Matteson	McLenithan
Mark and Juliana Leslie	Andrew Bridges	Karen Mattheessen	Pat and Karen McNamara
Jan Leuallen	Donald and Norma Lynch	and Timothy Bueter	Michelle McNulty
Robert and Margaret Levine	Gail Lynch	John Matz and Terry Griffin	Greg and Cindi McPherson
Barbara and Eldon Lewis	Roy and Asta Lynch	John and Kathryn Maxson	Mark and Catherine
Debra Lewis and Kevin Nagy	Will and Barbara Lynch	Janet and Randall Maxwell	McPherson
Dorothy and John Lewis	Roger and Barbara Lyon	Jack, Joann and	John and Nancy Meade
Richard and Colleen Lewis	Thomas and Barbara Lyon	Myron Mayer	Rod Meade
	Robert and Sue Lytle	Mike and Linda Mayer	Sue and Steve Meholic

## Gifts of \$1–\$999 — *Continued*

Mary and Larry Melendy	Harold and Norma Modeen	Roger and Stephanie Nelsen	Gloria Olds
Lisa Meleski	Donald Moon	Gary Nelson	Megan and Andrew Olds
James and Mary Virginia Mellow	Cynthia Moore	Heather and Andrew Nelson	Oleson's Food Markets
Rita Melotti and Andrew Bishop	Donna and James Moore	Judith Nelson	Vicki and Craig Olsen
Julian and Victoria Mendoza	Jackie and Mike Moore	Larry and Kelly Nelson	Olson, Bzdok & Howard, PC
Deborah Menninga	Victoria Morgan	Michele Nelson and Brett Cohen	Thomas and Lisa O'Neil
Jim and Lynnea Mensching	Bob Morningstar	Thomas Nelson	Sue Oppliger
David and Jan Merrell	Dorothy Moroff	Michele and Joe Nerone	J. Thomas O'Reilly
Jessica Merwin	Robert and Marellene Morrell	Patrick and Jennifer Nestor	Thomas and Connie O'Rourke
Katherine Messenger and Will Wright	Herbert Morris	Becky Nettles	Oryana Food Cooperative, Inc.
Kristi Messing	Dr. James Morris	Gerald and Jan Neumann	Thomas and Mary Osborn
Linda Messing and Kenneth Rudisel	Dr. and Mrs. Paul L. Morris	Mary Ellen Newport	Gary and Kristi Osga
Liz Messing	J. Elliot and Florence Morrison	Beverly Newson	Don and Bette Oswell
Constance Metcalf	Robert Morrison	Charles and Cynthia Newton	Nancy Outten
Robert and Adeline Metzger	John and Laura Morrissey	Ray and Paula Nichols	Donald and Christine Owen
Amy and Dan Meyer	Jacqueline Morse	Rob Nichols and Marilyn Butler	Judy Owen
James Meyer	Barb and Gregory Mort	Robert and Christine Nichols	Kipp Owen
Jean Meyer	John and Victoria Moseley	Michael and Kathleen Nicholson	Leroy Owens and Mary Lou Henderson
Pete Meyer and Elisabeth Del Buono	David Moyer and Barbara Hastings	Chris Nickerson	Thomas and Sarah Oxnard
Dan Miarka	Timothy Moynihan	Amy Nickolas	Michael and Victoria Pachulski
Judith Mich†	Anne Mudgett and Scott Furgueson	Jack and Cindy Niederhofer	Kevin and Rebecca Page
Maureen Michaels	Karen Mudgett	John and Marilyn Niesen	Ted and Lori Pall
The Staff at the Michigan Department of Health and Human Services	Eric and Amy Mueller	Dean and AnneMarie Nishi	Thomas and Victoria Palmer
Philip and Connie Micklin	Patrick and Christine Muldoon	Nissan Vehicle Connected Services	Susan and Tom Palmer
Norman and Shirley Mientkiewicz	Jennifer Mullan	Timothy and Vicki Nolan	Philip and Heidi Pandolfi
Timothy Milford	Richard and Marilyn Mumaw	David and Rachel Noller	Roland and Sara Pandolfi
David and Donna Miller	Arnold and Allison Mummert	Richard and Sondra Nordin	Scott Papineau
Ellen Miller	Jo Ann and Gary Munce	Mike and Michele Norling	Robert and Julee Parker
Louis and Karen Miller	Carol and Henry Mundie	Kat Norman	Sarah and Chad Parker
Sally Miller	Molly Murbach	Stephen and Ann Norman	Scott and Frances Parry
Wayne and Jane Miller	Ann Murphy	Michael and Linda Norris	Kathy Partin and Jean Hughes
James and Mary Beth Milliken	Barbara and Brian Murphy	Northwoods Ski & Spree Club	Craig and Judy Passon
Claud Mills	Catherine Murphy	Mark and Tricia Noss	James and Denise Patton
Jennifer and Jay Mills	Dennis and Judy Murphy	Julaine Novak	Penelope Paulley
James and Peggy Miner	Sharon Murphy and Sharon Montonye	Don Nowak	Bruce Peabody
Robert and Kristen Miner	Bruce and Natalie Murray	Ronald and Ruth Nugent	Kate Pearson and Steve Cruzen
Susan Miner	Joan Murray	Scott Nugent	Sarah and Lawrence Peck
Cathy and Paul Minster	Rich and Elizabeth Murrell	Dr. Homer Nye and Rebecca Mang	Diane and Thomas Pederson
Carol Mitchell	Kenneth and Patricia Musson	Jan and Mary Ellen Nyland	Henry and Sally Peet
Lisbeth and Paul Mitchell	Maureen Myers	Lisbeth Oana	Pamela and Charles Pelizzari
Samuel and Karen Mitchell	Roger and Martha Myers	Alyssa and Adam O'Brien	Patricia Pelizzari
Dan and Lynne Mixer	Kristen Naidoo	James and Margaret O'Brien	Robert and Judith Pelto
MLC Realty, INC	Richard and Cheryl Naperala	Theresa O'Brien	Dennis and Mary Penney
Margaret and Henry Moczul	Catherine Nehil	Bruce and Cathy Odom	David and Beth Pennington
	Mr. and Mrs. Peter D. Neithercut	Robert and Ann Ogur	Steve Perdue, Grand Traverse Industries
	Eileen and August Neitzel	Louis and Linda Okma	Jo Peregrine
		Susan Olcott	



Jose Perez-Sanz and Catherine Bosher	John Putz	Heather Rinkel	Rick and Cynthia Sack
Elizabeth Perkett	Katharine Pyott	Constance Riopelle	David and Carol Sagaser
Krin and James Perreault	Judith Rabbai	David and Kathy Ripmaster	Donald Sagaser
Roger and Heather Perry	Robert and Elaine Rabideau	Richard and Janet Robb	Kristin and John Sak
Art and Ruth Peschke	John and Linda Racine	Todd and Carrie Robbins	Pat and Lyn Salathiel
Elmer and Ruth Peterman	Diana Raddatz	David Roberts	John and Suzette Sanborn
Jean Peters	Ruth Radomski	Karen Roberts and Mike Madden	Paul Sander and Lori Lichtman-Sander
Mary Peters and Patrick Mcmanaman	Eric and Joni Rammelkamp	Alexander Robinson	Todd and Maura Sanders
Mary Peters	David and Laurie Randall	Michael Robinson	Stephanie Santoro
Monnie Peters	James and Lisa Randall	Patricia and Edward Robinson	Edna Sargent
Nathaniel and Juanita Peters	Jeannine Ransom	Phyllis Robinson	Donald and Margaret Sarna
Rob Peters	Katherine Ranta	Michael and Libby Robold	Richard and Norma Sarns
Curtis and Gussie Peterson	Ross and Shelly Rapaport	Walter and Jan Roch Von Rochsburg	Richard and Linda Saslow
Mike and Laura Peterson	Michael Raphelson and Carla Langerveld	Larry and Elaine Rochon	Mike and Nancy Sauve
Pete and Elaine Peterson	Richard and Judith Rathburn	Charles and Sara Rodeck	Kay and Marvin Saxton
Rebecca and Michael Peterson	Arnold and Joan Ratkowski	Barb and Mike Rodenberg	Anne and Mitchell Saywitz
Althea Petritz	Elaine and Thomas Raven	John and Julie Rodes	Vincent and Kathryn Scanio
George Petritz	Ricki Ravitts	Nelson and Martha Rodes	Wylie and Donald Schaffer
Gary and Lyn Petty	Lynn and June Rayle	Sally Rodgers	Logan Schlipf
Pfizer Foundation	Bradley and Marilyn Raymond	Kristen and Paul Roell	Neill and Joan Schmeichel
John and Amy Pflughoeft	Richard and Holly Raymond	Dan and Martha Rogalny	Walter and Marilyn Schmid
Denny Phillips	Re/Max of Elk Rapids	Ann Rogers	Kurt and Karen Schmidt
Stephen Phillips	Polly Rea	Gwen Rogers	Louis and Mary Schmidt
Larry and Kathy Picklo	Kate Redman	Mary and Jim Rogers	Richard and Jennie Schmitt
Charles and Claire Ping	Leslie and Richard Redmond	Steven and Linda Rogers	Thomas and Beverly Schmitt
Kathie Piper	John and Barbara Reed	David and Elizabeth Rollert	Carl Schmult
Marie Plester	Melissa Reed	Richard Romanowski	Davina and Virgil Schneider
Paul and Barbara Poehlein	Patricia and William Reed	Bill and Karen Rosa	John and Elizabeth Schneider
Nancy and Carl Pohly	Richard Reed	John and Tina Rose	Kathy and John Schoedel
Janice and Dave Post	Hilda and William Reed	Paul and Carol Rose	Aaron and Margaret Scholnik
Deb and Mark Posthumus	Ruth Reeve	Tom and Marilyn Rosi	Russell and Joanne Schopieray
Connie Powers	David Reid and Kathi Houston	Ricky Ross	Miriam Schreck
Kathy Powers and Richard Wernham	Mike and Kathy Reid	John Ross	Wallace and Patricia Schroth
William and Judith Prakken	Robert Reider and Susan McCraven	Keith Ross and Loise Doud	Marilyn Schuler
Allen and Linda Pratt	Donald Reinke	Walter and Pat Ross	Susan Schuler
Terry and Anita Pratt	Greg and Terri Reisig	James and Brenda Rossi	Thomas and Nancy Schulte
Ed and June Prein	Emilia Rennie	John and Barbara Rothhaar	Katherine and Steven Schultz
Woneta and Robert Prenger	Linda Rexer	Ken and Sue Rottet	Cathy Schulz
Linda Prentice	Kent and Mary Ann Reynolds	Fred Rounds	Jean Church
Tim Prescott and Linda Wessels	Dean and Bonnie Rhoads	Diana and Basil Rowe	Don Schuster
Judi Pressick	Michael and Alice Rhyner	John and Kathleen Rowley	Earl and Georgann Schuster
John Price	Clark Richardson	Vaira Rozentals	Ann and Max Schwandt
David and Joan Pritchard	Karen Richardson	Elizabeth Rudd	Susan Schwartz
Robert Probst	Nate Richardson	Thomas and Anna Rudd	Bill and Irene Scott
Todd and Angel Pronger	David and Ann Rigney	Anthony and Natalie Rupard	David Scott
Peter Prouty	Judy and John Riley	Mary and Jerry Rupley	Sharon Scranton
Emerson and Elizabeth Pugh	Robert Riney and Sandra Bowman-Riney	Richard and Phyllis Russell	Gary and Nancy Seabrook
Tolli Pugh		Rudy and Jill Ruterbusch	William and Laurie Sears
		Elizabeth Rutila	Mark and Charles Sehi

## Gifts of \$1–\$999 — *Continued*

Sehi Computer Products, INC.	Patricia Skifstad	William and Patty Springstead	Bob Stuber and Debra Cline-Stuber
Beverly Seifert	Mary Ann Slazinski	Peter and Barbara Springsteen	Marcia Stucki
William and Kathryn Seitz	Joan Sleder	Michele and Tom Squires	Marvin and Carol Studinger
Eugene Selden	Sleeping Bear Farms	Nick and Rachel Stagman	Steven and Debra Styers
Rita Selden and Zachary Bell	Donna and Thomas Sloan	John Stamm	Doris and Joe Suarez
Thomas Senior	Chris Sloane	Jim and Jill Stander	Chris and Ali Sullivan
Shirley Sevener	Donna and Wayne Slowinski	Colette Stanish	William and Cheryl Sullivan
Chris and Michele Shafer	Jim Sluyter and Jo Meller	Rather Stanton	Shirley Summers
Marcia and Keith Shahan	Ronald Smeltzer	Gloria Stapp	Summit Industries
Benjamin and Shari Shambaugh	Dena Smith	Stardust Memorials, LLC	Robert and Cheryl Sunday
George and Jaqui Shambaugh	Donald and Linda Smith	Star-Key Home Owners' Association	Glenn and Kathy Sundbeck
George and Roberta Shambaugh	Jack and Gail Smith	Gary and Jane Stauffer	Heidi and Andrew Sung
Steve and Shirley Shane	Jean and Brook Smith	Susan Stearns and Franklin O'Loughlin	Thomas and Lisa Suntrup
Elizabeth Sharp	Margie and Phil Smith	Cecile and Andy Stebbins	Jerry Sura
Linda Sharp	Mark and Ann Smith	John and Lynn Steben	Judith Sutton
Mr. and Mrs. Lowell E. Shaw	Mark and Susan Smith	Steelcase Foundation	Mark and Susan Sutton
Matthew and Jennie Shaw	Marsha Smith and Tom Gilbert	Bethany Steffey	Sue and Kjell Svensson
Virginia Shaw	Matthew and Denise Smith	Patti Steinmayer	Gerald and Ann Swaney
Scribner and Patricia Sheafor	Stiegemeyer Family	Peter and Joan Steketee	Joel Swanson
Joan Sheard and Myrna Yeakle	Sherwood Smith and Suzannah Tobin	David and Dianne Stephan	John and Lois Swanson
Susan and David Sheldon	William and Mary Smith	Jonathan Stephens and Carla Kish	Judith Swartz
Shell Matching Gifts Program	Ross and Shirley Snare	Steve and Lynn Stephens	Pete Swartz and Lori Franz
Bonnie Shepard	David and Kathryn Snell	Yvonne Stephens	Eileen Sweazy
Judith Shepelak and George Vinyard	Brian Sniokaitis and Maggie Smith	Fred and Bettie Sterner	Sweetwater Evening Garden Club
William and Maridel Sherk	Steve and Nikki Sobkowski	Steve Fritz Art Service	Jeffrey and Bridget Swesky
Timothy and Sharon Sherrow	Margaret Soderberg	William and Kathleen Stevenson	Carolyn Swift
Mary Shirley	Gerald Solanics	Gayle and Stephen Stewart	Ward and Francoise Swingle
Steve and Carol Shuckra	Violet Solomonson	Kent and Ann Stewart	Scott Swinton and Sylvia Morse
Barclay Shultz	Peter and Mary Jo Solwold	D. W. and Joyce Stibbs	John and Linda Switzer
Heather and Rick Shumaker	Sally Somsel	Frank and Jill Stiltner	Dan and Kristi Takens
Peter Shumar	Richard and Rebecca Sorensen	David and Linda Stimpson	Lawrence and Marianne Talon
Susan Shurin	Scot and Katherine Sorenson	Martha Stimson	Tamarack Gallery
Siebenthaler Foundation	Suzanne Sorkin and Eliot Singer	Donald and Betty Stone	Alice Tang
Allan and Marjorie Siefert	Cliff Sorrell	John and Eleanor Stottlemeyer	Ehsan and Nighat Taqbeem
Helen Sieg	Richard and Diana Sosnowski	Barbara Stout	Joseph Taraskavage
James and LaRayne Siegmann	Deborah and Tom Southworth	David and Kathy Stout	Philip and Susan Tarczon
Robert and Andrea Sigworth	Russell and Tina Soyring	Robert and Ruth Stow	Michele and Robert Taylor
Nina Silbergleit	W. R. Spayde	John and Marilyn Strader	Michael and Jacquelyn Teagan
David Simpson and Anne Pawlak-Simpson	Jeff and Judy Spencer	Joseph and Carol Strauss	James and Roberta Teahen
Howard and Kathryn Simpson	Lorry Spitzer and Diane Young-Spitzer	Ann Strehle and Barbara Skurdall	Mr. and Mrs. Graham Teall
Margo and Bill Sirrine	Patrice Spitzer	Richard Streit	Nancy and William Tebelman
Six Mile Lake Association	Judith Spohn	Judith Strickland	John and Marcia Teichman
Robert and Jo Ann Skabo	Jim and Dottie Spousta	Kim and David Stringer	Dean and Maureen Templeton
Ernest and Debbie Skeans	Reg Sprik	John and Irene Stuart	Stephen and Ann Templeton
			Cooper Terry
			Sam Tesaker



Margaret and Timothy Tewson	Kathy Tuckerman	Melinda Wagner	Dan and Polly Welburn
William Thacker and Anne Cavanaugh	Carrie Twigg	Sidney and Susan Wagner ◊	Thomas and Marcy Welburn
Tim and Trish Thane	Judy Twigg	Wendy Wagoner	Doug and Cheryl Welday
Kelly and Carolyn Thayer	Sharon Tyson and David Frankel	Stephen Wailes and Jane East	Karen and J.D. Wells
Nancy Thayer	UBS Employee Giving Program	May and Paul Waldron	Carolyn Wentworth
Cyril and Jacqueline Thiel	United Way of Washtenaw County	Rep. Howard and Dianne Walker	Michelle and Robert Wentworth
Homer Thiel	Craig Urquhart	Kent and Suzanne Walker	Dale and Barbara Wentzloff
Bruce and Jacquelyn Thomas	Phyllis Valentine	Richard and Mary Walker	Pamela Wenzel
Carol Thomas	Beau Vallance and Jack Carpenter	Floyd and Betty Wallace	Bruce and Catherine Werts
Paul Thomas	Dayna and Roderick Valpey	Ken and Joanne Walrad	Carol and Mark Werts
Robert and Janice Thomas	Michiel and Lin Van Nieuwstadt	Bertram Walsh and Jean Larson	Thomas Wertz
Ted Thomas	Barb Van Pelt and Dave Varga	Chris and Ashlea Walter	Alan West
Carolyn and Clif Thompson	Donald Van Suilichem	John and Kathy Walthorn	Roger and Mary Westover
George and Sally Thompson	Sam and Ginny Vance	Brent and Norma Walton	Mary Weygandt
John and Janice Thompson	Marcia Vandenbelt and James Cutler	Nancy and Kent Walton	Dennis Whalen
Paul Thompson	Doug and Linda Vander Hoff	Steven Walton	Tim and Colette Whalen
Tom and Janet Thompson	Eric and Julie VanderHaagen	Andrea Walworth	Joe and Linda Whelan
Thomson Reuters	John and Jeanne VanderMeer	John and Ann Walz	Carolyn White
John and Sandra Thorne	Diane and John VanderVeen	Robert and Helen Wangard	Harvey White and Alice Lloyd
Bill and Marilyn Thornton	Margaret VanderWaerden and Lee Falco	James Wanner	Gregory and Karen White
Dennis Thorpe	Gary and Anita VanderZiel	Lawrence and Jamie Warbasse	Kathy and Ted White
Tammy and Mark Timm	Margaret and Steven Vangrouw	Doug and Ann Ward	Laurence and Carole White
William Timmins	Daniel and Margaret VanHaften	Harmon Ward	Margaret White
Patrick and Susie Tobin	Dana Vannoy	Margaret Ward	Richard and Anne White
Emily Todd	David VanWinkle	Nancy Wardwell	Whiteford Associates Inc.
Samuel Todd	Gordon and Margaret Vanwylen	William and Di-Anne Warmbein	Erin and Ben Whiting
Thomas and Diane Todd	George and Lauri Varga	Kenneth and Patricia Warner	Steve and Amy Whitlatch
William and Mary Todt	Sharon Varga	Anne Warren	Marilyn Whittaker
Marty Tomb	William and Barbara Vaughan	Flint Watt	Charles Wicht
Jacqueline Tompkins-Weede	Gloria and Adam Veltman	James and Sharon Wawrzyniak	George Wickstrom
Steve and Amy Tongue	Lois Verbrugge and Elmer Gilbert	Kathleen Way and Robert Molloy	Luann Wieber
William and Christine Toole	Douglas and Linda Verellen	Mary Weadock	Rick and Raj Wiener
Richard and Anne Tooley	Alan and Bev Vicstein	Kennard and Judith Weaver	Linda Wikle and Gail Trill
Tom and Mary Torbet	John and Lynn Vinkemulder	Mark Weaver	Ginger Wilber
Harriet Townsend	Helen Vogel	Tim Webb and Gail Roberts	Barbara Wilbur
Jeanne Townsend	Mark and Jane Vogel Family Foundation	Dave and Janice Webster	Charles Wilbur and Caroline Blaum
Traverse Area Association of Realtors	Phil and Barb Von Voigtlander	Dayna Webster	Diane Wilbur
Linda and Stuart Travis	Richard and Consuelo VonAchen	Greg and Maggie Weddell	Wildlife and Wetland Solutions
Corey Treadway and Sarah Bancroft-Treadway	Warren and Sharon Wade	Kathleen Weede	Susan and Gerald Wilgus
Debra and Keith Treiber	Dawn Waggett	Jeff and Allison Weemes	David Wilkins
Vicki Trent		Mr. and Mrs. Richard C. Weiermiller	John and Kathy Wilkinson
Jocelyn Trepte		Bob and Maurine Weisenburger	John Wilkinson and Robin Silva-Wilkinson
Steve and Sarah Trippe		Charles and Ann Weitz	Phyllis and Ron Wilkinson
Cynthia and Ron Tschudy		Donna Weitz and Bill Smith	David and Judy Williams
Dan and Joanne Tubbs			David and Roberta Williams
Brian and Laurie Tuck			Jeanie Williams
Sara Tucker			Bonnie Willings

## Gifts of \$1–\$999 — *Continued*

Thomas and Gwen Willson	Dan Wolter	Steven and Margot Wynkoop	Michael and Christine Zenn
Bart and Patty Wilson	Gordon Wolters	John and Janet Wyrwas	Linda Zeratsky
Kathryn Wilson	David and Ann Wood	Maureen Yahrmatter	Douglas Zernow and
Kemp Wilson	Susan and James Woodburne	Mr. Howard and Dr.	Merilyn Ueno
Steve and Karen Wilson	Michael and Emily Woods	Patricia Yamaguchi	Alan Zetterberg and
Windward Partnership	Randi and Mark Woodworth	Pam and Jay Yarwood	Pam Goodwin
Julie Winkler	Robyn and Jim Woolcock	Laura Yeo	Pierre and Sally Zetterberg
Nathan Winkler	Donice Wooster	Birgit Yetter and	Sandra Palmer Zilincik
Emma Winter	Tom and Mary Jo Workman	Keith Conway	Richard and Monica Zillich
Kenneth and	Wayne Workman	Fred Young and	Barbara Zimmerman
Marguerite Winter	John and Kathleen Worm	Julie Youmans	Liz and Scot Zimmerman
Walter and Patricia Wisdom	Laura Worst and Dr.	Laurie Young	Scott and Kelly Zimmerman
Gary and Margaret Withall	Robert Bracey	John and Peggy Zachman	Michael and Ann Zipser
Anthony and Kathy Wittbrodt	Helen Woytowich	Richard Zaebst	Stephen and Nancy Zirkle
Karla and Stan Woell	Douglas and Margaret	Cass and Dolores Zakrzewski	Jan and Daniel Zolik
Carolyn Wolf	Wozniak	John Zaremba	Dan and Cindy Zolkowski
Wendy Wolfe and	Carl Wroubel	Ronald and Jeri Zawlocki	Nelson and Dolores Zuchetto
Paul Wawrzyniek	Charles and Ellis Wunsch	Ron Zeeb	
Jesse and Molly Wolff	Walter and Dolores Wurst	Bruce and Diane Zeeuw	



"As a community with such natural beauty, it is important that we become good stewards of our treasures. Preserving designated areas that are safe, accessible and welcoming is part of our stewardship. We are proud to support the work of the Conservancy."

*Bonnie Alfonso | President, Alfie Logo Gear*

**BUSINESS DONORS** The ongoing support of our business community shows a commitment to northern Michigan's farmland heritage, the protection of natural lands and the preservation of clean air and water. As you make charitable gifts to the Conservancy, you communicate to your customers how deeply you value and care for northern Michigan's natural resources.

### Business Gifts \$25,000 or more

Anonymous

### Business Gifts \$5,000–\$9,999

Aultra Ventures  
Cherry Republic  
L.T.C. Automotive, INC.  
Morrissey Equip Corp  
Tom's Food Markets

### Business Gifts \$2,500–\$4,999

Iceman Promotions, Inc.  
Otwell Mawby, PC.

### Business Gifts \$1,000–\$2,499

Alfie Embroidery Inc.  
Camp Arcadia  
Chemical Bank  
Comfort Keepers, Russ  
and Leslie Knopp  
Cone Drive/Textron  
Drew Smith Photography  
Gosling Czubak Engineering  
R.M. Young Company



**Business Gifts \$1–\$999**

Alward, Fisher, Rice, Rowe & Graf, PLC	Century 21 Northland	Hurley Investment Counsel LTD., INC.	Sehi Computer Products, INC.
Anonymous	Coldwell Banker Schmidt, Realtors	Manitou Restaurant	Sleeping Bear Farms
Arcadia House Bed & Breakfast	Dewey Insurance Agency	McLain Race Team	Stardust Memorials, LLC
Bay Area Contracting	Dooge Veneers, Inc.	MLC Realty, INC	Steve Fritz Art Service
Bay View Flooring	Edel Consulting	MyRaceSticker.com	Summit Industries
Bell Title Lakeshore	EJ USA, Inc.	Nissan Vehicle Connected Services	Tamarack Gallery
Berkshire Hathaway Home Services New England Properties	Endoman Promotions, LLC	Oleson's Food Markets	Tria Bordo Farm, LLC
The Book Store	Fenner, Melstrom & Dooling, PLC	Olson, Bzdok & Howard, PC	Water's Edge Dentistry
Boride Engineered Abrasives	Gillison Excavating, Inc.	Oryana Food Cooperative, Inc.	David Webster Construction
Bowers Harbor	Gourdie-Fraser, Inc.	Steve Perdue, Grand Traverse Industries	White Birch Lodge
Vineyard & Winery	Hagerty Insurance Agency	Re/Max of Elk Rapids	Whiteford Associates Inc.
Burritt's Fresh Markets	Healthcare Business Media		Wildlife and Wetland Solutions
			Windward Partnership

**MATCHING GIFT PROGRAMS** Many companies offer matching gift programs to encourage employees to contribute to charitable organizations like the Conservancy. Most of these programs match contributions dollar for dollar, and some will even triple the amount of your gift. The following companies made donations to match their employees' gifts to the Conservancy:

**Matching Gift Programs**

Allied World Assurance Company	CNA Foundation	W.K. Kellogg Foundation	Steelcase Foundation
American Endowment Foundation	GE Foundation	Charles Stewart Mott Foundation	Thomson Reuters
Baird Foundation, Inc.	Grand Traverse Regional Community Foundation	Pfizer Foundation	UBS Employee Giving Program
Bank of America Matching Gifts	IBM Corporation	Shell Matching Gifts Program	
	Illinois Tool Works Foundation	Skillman Foundation	

# LAND CHAMPIONS

**JANUARY 1 – DECEMBER 31, 2017**

**By making monthly gifts you support the very foundation of our mission and allow us to plan and sustain our work more effectively. We are grateful for your commitment and generosity.**

Joe and Kathryn Anderson  
Jeremiah and Kristi Avery  
Robert and Nancy Baglan  
Dianne Baker-Hale  
and Calvin Baker  
Nicolaas and Rhonda  
Ballintyn  
Ken Beck  
Norman Bell and  
Gail Parry  
Travis and Joan Bell  
Marcia Bellinger  
and Irv Stoner  
Warren and Barbara  
Berthelsen  
Audra and Nathan  
Bildeaux  
Rosaleen and  
Richard Borton  
Ed and Jennifer Bradford  
Anne Brasie  
Art and Allie Bukowski  
Glen and Rebecca Chown  
Norman and Laura  
Christopher  
Julie Clynes  
Thomas and Barbara Cole

Joseph and Leslie Cook  
Robert and Karin Cooney  
Thomas Crampton  
Anita DeMarco Goor  
Virginia Dike and  
Ijeoma Dike-Young  
John Driscoll  
Marissa and Manny Duque  
Tom and Diane Emling  
Chad and Monica Evans  
Fred Farage Jr. and  
Carl Strebel  
Jane and Steve Fish  
David Foley and  
Margaret Willman  
George and Mary Ford  
Lisa Franseen  
Joe Frederick and  
Emily Cook  
Madelyn and James Frick  
Stephen and Susan Fry  
Karen Garber and  
John DesMarais  
Mark and Mary  
Beth Gentry  
John and Ann Gerhardt

Jeremy Gibson and  
Carolyn McDonald  
Mark Gilmore  
Gail Halliday and  
Tim Laney  
Jack and Ruth Harris  
Will Heelan  
Robert and Barbara Heflin  
Dr. Kristina Hindert  
and the Honorable  
Ronald Nehring  
Jennifer and Brian Jaffe  
Jennifer Jay and  
Evan Johnstone  
David and Christine  
Jaymes  
Gerald Jehle  
Jill and Ron Johnston  
Linda Kehr  
Donald and Barbara King  
Jean and Walt Kretzmann  
Becky Lancaster  
Gregory and Audrey  
Landsfeld  
Marilyn Doty Larson  
Matthew Lohrentz  
Katie Lowran

Josephine Marquis  
Matt and Ann McDonough  
Jane McKune  
John and Nancy Meade  
Rita Melotti and  
Andrew Bishop  
Judith Mich†  
Barb and Gregory Mort  
Anne Mudgett and  
Scott Furgueson  
Jennifer Mullan  
Richard and Marilyn  
Mumaw  
Michele and Joe Nerone  
Charles and Cynthia  
Newton  
James and Margaret  
O'Brien  
Megan and Andrew Olds  
Gary and Kristi Osga  
Kathy Partin and  
Jean Hughes  
Kate Pearson and  
Steve Cruzen  
Steve Perdue, Grand  
Traverse Industries  
George Petritz



"Our Michigan house is on M-22 just south of Green Point Dunes Preserve, just west of Fruithaven, and just north of the Upper Herring Lake Preserve and Arcadia Dunes. It is such a relief to know that these wonderful woods, dunes and wetlands will be preserved forever from development and are well cared for by the Conservancy. The amount we give monthly as Land Champions is tiny compared to the pleasure we get from exploring, working in, and learning about these wonderful preserves. Since the pleasure we take is ongoing, it's nice to feel that our contribution is also ongoing."

*Norman Bell and Gail Parry*



Tim Prescott and  
Linda Wessels  
Eric and Joni Rammelkamp  
Polly Rea  
Kate Redman  
Nate Richardson  
Heather Rinkel  
Michael and Libby Robold  
Sally Rodgers  
Kristen and Paul Roell  
Anthony and  
Natalie Rupard  
John and Suzette Sanborn  
William and Laurie Sears  
Joan Sheard and  
Myrna Yeakle  
Steve and Carol Shuckra  
Jeff and Judy Spencer  
Michele and Tom Squires  
Nick and Rachel Stagman  
Gary and Jane Stauffer  
John and Lynn Steben  
Chris and Ali Sullivan  
Ward and Francoise Swingle  
Paul Thomas  
Linda and Stuart Travis  
Kathy Tuckerman  
Rep. Howard and  
Dianne Walker  
Charles and Ann Weitz  
Erin and Ben Whiting  
Rick and Raj Wiener  
Diane Wilbur  
Jeanie Williams  
John Robert Williams  
and Terrie Taylor  
Julie Winkler  
Nathan Winkler  
Wendy Wolfe and  
Paul Wawrzynek  
Andrew and Noelle Wolff  
Jesse and Molly Wolff  
Randi and Mark  
Woodworth  
Birgit Yetter and  
Keith Conway



# VANGUARD SOCIETY

**JANUARY 1 – DECEMBER 31, 2017**

**By making plans to benefit the Conservancy with future gifts—accomplished through estates, trusts, annuities, insurance policies, beneficiary designations and other planned giving options—Vanguard Society members will continue to make a difference for land conservation far into the future, helping to ensure that the places we protect today will be cared for, forever.**

Martha Aemisegger †  
 Carl and Betsy Anderson  
 Anonymous (4)  
 Anonymous † (2)  
 Hal and Kathryn  
 Armstrong  
 Marjorie E. Arney †  
 Judy and Paul Arnold  
 Christine Arvidson  
 and Henry Doss  
 Robert and Nancy Baglan  
 George and Martha Bailey  
 George and Merry Ball  
 Daniel P. Baumhardt  
 Rosemary Benedetti  
 Carl and Sally Benner  
 John & Rebecca Bercini  
 Naomi Borwell †  
 Kenneth and  
 Jennifer Bosma  
 Nancy Eshelman Brickman  
 Jill C. Byron  
 Kathleen Carpenter  
 Ruth W. Catton  
 Glen and Rebecca Chown  
 Bob and Cindy Clement  
 Sara Cockrell  
 Jane R. Comings  
 Bonnie Craig and  
 Dan Sylvester  
 Karen and Ronald Culp  
 Marcia and Ted Curran  
 Kate and Rick Dahlstrom  
 Robert and Arlene Dean  
 Jock † and Sue Denio  
 Michael and Barbara  
 Densos †  
 Alice J. Detzler  
 Betsy and Stan Dole

Diane L. Dupuis  
 Dan and Debbie Edson  
 David and Linda Egeler  
 Arthur Elliott †  
 Rich and Susan Erwin  
 John H. Fisher  
 Karen Garber and John  
 DesMarais, In Memory  
 of Dr. Frank W. Garber  
 and Ellen A. Garber  
 Lois Goldstein and  
 John Heiam  
 Tom Greensmith  
 Anthony Grybok †  
 Jessica A. Hatch  
 Victor C. Hayes †  
 Mr. and Mrs.  
 John R. Hicks  
 Thomas Hitchman  
 and Keith Hewitt  
 Tom and Myrna Hitchman  
 Anne M. Hoffa  
 William Holland  
 Jim and Diana Huckle  
 Donald E. Hunt  
 William A. Hyslop  
 Harry † and June Janis  
 Jerry and Pat † Jehle  
 Walter H. Johnson  
 Joyce Keillor †  
 Karen G. Kerrigan  
 The Rev. Dr. Kathleen  
 L. Kircher  
 Wayne and Ruthanne  
 Kladder  
 Oscar H. Kraft †  
 Kima M. Kraimer  
 Edith Krause †  
 Robert Charles and  
 Patricia Cosner Kubic

Richard and Marlene  
 Loughmiller †  
 Wendy MacGaw  
 The Joseph  
 Magliochetti Family  
 Rosemary Malocsay  
 Kent † and Barbara  
 Manning  
 Josephine "Jody" Marquis  
 Bob and Nancy Marshall  
 Diane McDonald †  
 Christie McGue  
 and Robert Calt  
 Donald McIntyre, Jr. †  
 Dick and Shirley McNally †  
 Harriet Miller-Brown  
 Robert and Joyce Mims  
 Elizabeth S. Mitchell †  
 John and Nancy  
 † Morrison  
 Ruth Luse Myers †  
 Ray and Paula Nichols  
 Elaine Oeflein †  
 Julie Pearson  
 Kate Pearson  
 Robert W. and Ann H. Pike  
 Mary J. Pitcher  
 Eula Pray †  
 David and "Weezie" Reese  
 Dan Remahl  
 Patricia D. Robinson †  
 Tom Robinson †  
 Elizabeth B. Rodgers  
 Edward and Elyse Rogers  
 John Ross  
 Eda June (Novak) Scott †  
 Gregory D. Seman  
 Chris and Michele Shafer  
 George E. Shambaugh, Jr. †

Colette Stanish  
 D.W. and Joyce Stibbs  
 Ann and Allen Taylor  
 Terrie E. Taylor, D.O.  
 Herbert H. Tedder †  
 William and Mary Todt  
 Andrew M. Vander  
 Molen †  
 Dana Vannoy  
 Suzanne J. Voltz  
 Phil and Barb Von  
 Voigtlander  
 Ralph A. and Margaret  
 von Walhausen--our  
 first annuitants  
 Lorenzo E. and  
 Beverly F. Wagner †  
 M. Sue Waltz  
 Anne W. Warren  
 Gloria Whelan  
 John Wunsch and  
 Laura Wigfield  
 Birgit Yetter and  
 Keith Conway  
 Ron and Marty Yocum



# MEMORIALS

**JANUARY 1 – DECEMBER 31, 2017**

Gifts were made in memory of the names shown in bold. Your thoughtful memorial gift is a gift of hope for the future, an investment in forever and a lasting tribute to honor lives well lived.

**Rick Andrew**

Gary Andrew and  
Jean Braxton

**Ted Bagley**

Nancy Cook

**Bill Baker**

Patricia Janick

**Wilmur and Jeane  
Bartels**

Thomas and Nancy Schulte

**Emerson Battersby**

Linda Boldizar

**Walter Beardslee**

William Scharf

**George Wood Beeler**

Judy and John Riley

**Priscilla Belden**

Dan and Jane Allensworth

**Jeanne Benz**

Gary and Carol Tasch

**Patricia Berghoff**

Bruce and Kathleen  
Berghoff

Robert and Nancy Marshall

**Edith Blackhurst**

Gayle and Stephen Stewart

**Ethel Blafzczuk**

Douglas and Margaret  
Wozniak

**Bruno Borromey**

Al and Julie Hurd

**Irene Bridgman**

Barb and Gregory Mort

Michael and Bethany  
Onthank

Kathie Piper

**Roger Brown**

Esther Brown

**Loraine Buckner**

Robert Buckner

**Dorothy L. Bukowski**

Michael Bukowski  
and Karen Kulik

**Van A. Burd**

Joyce and Garland Hicks

**John L. Buxton**

Susanne Buxton

**Ed Cady**

Will and Barbara Lynch

**Jacqueline G. Callahan**

Patrick and Carol Conway

**Dr. Edwin Carter, MD**

Gwen Rogers

William and  
Christine Toole

**Scott Casey**

Sally Casey

**Donald Chown**

Marion Shroyer

**Fred Clinton**

David Berge

Dan and Cindy Zolkowski

**Jan Coggeshall**

Catherine Alfred

Lester and Natalie  
Dragstedt

**Karen Dahlen-Lacivita**

Karen Aeschlimann

Kathy and Will Bernardi

Laura and David Bexfield

Elliott and Sandra Brown

Deborah Sjoberg Carlson

Scott and Mary Carson

Cathy Lyons

Sharyn Miles

Charles and Elaine Miller

Laura and Larry Saret

Amanda and James  
Sorensen

Sue Strum

Irene Sullivan

Kathryn White

Jean Woods

**Shirlee P. Davidson**

Charles and Susan  
Davidson

**Joseph Derge**

Julaine Novak

**Robert Dopke**

Robert and Pauline Young

**David Downer**

Marty and Carole Chirgwin

**Mary Jordan Ehlert**

Ted and Andy Ehlert

**Ray Emerick**

Charles and Sara Rodeck

**Zac Fochtman**

Jane Fochtman

**John D. French**

Michael and Patricia Beach

**Abby Mahan Gartland**

Bill Chamberlin

Tom and Karen Gartland

Catherine Nehil

Thomas Phillips

**Bert Gast**

John and Grace Gast

**John George**

Michael and Dixie Davis

**Burdette L. Green**

Donice Wooster

**Thomas E. Guldberg**

Richard and Anne White

**John Gurdak**

Barbara Cochrane

**Alan Haase**

Gary and Jane Stauffer

**Gary Harris**

John and Gina Erb

Kathy Tuckerman

**Rosemary Hartung**

Louise Hartung

**Ruth Heringlake**

Paul and Ruth  
Anne Hickman

**James L. Highsaw**

Bruce and Rhoda Bush

Carol Highsaw

Jane Highsaw‡

Jim Highsaw

Linda Prentice

**Alice Hinkamp**

Elizabeth Arendshorst

Ned and Barbara Edwards

David Reid and  
Kathi Houston

Mr. and Mrs. Graham Teall

Margaret and  
Timothy Tewson

Margaret and Steven  
Vangrouw

Gordon and Margaret  
Vanwylen

**Alice and James  
Hinkamp**

Laurence and Carole White

**Priscilla Hirt**

Don Hirt

**Jack Hood**

Christine Haack  
and Mark Hood

**Emmett Horton**

Virginia Horton

**Nancy Jacobs**

Mae Ayers

Jean and William Hines

**Harry Janis**

Vernette Cauchy

Dick and Carol Crout

David and Margaret Hauser

## Memorials — *Continued*

Allen Janis  
James and Hillary Janis  
Mark and Janet Janis  
Rus Janis and Connie Snow  
Gloria, Thomas and Paul McClay  
David Quinlan  
William Scharf  
Audrey Thomas  
John Trezise  
Paul and Delphine Welch  
Cheryl Wilson  
Arthur and Jean Yeager Family  
**Robert Jessup**  
Elizabeth Jessup  
**Eugene and Dorothea Johnson**  
Karen Kerrigan  
**Gregory Johnson**  
Anonymous(4)  
Hal and Kathryn Armstrong  
Jerry and Annette Babb  
Barris-Blair Families

Mary Ellen Bell and Randy Smith  
Elizabeth Brouwer  
Nikki and Christy Cairns  
John Correia  
Cullen Family  
Dooce Veneers, Inc.  
Walter and Lynn Dorfstatter  
Todd and Michelle Emery  
Mary Engdahl  
David and Pamela Feidner  
Fenner, Melstrom & Dooling, PLC  
Family of Robert and Jane Griffin  
Mary and Chris Holcomb  
Mary Lou and Thomas Jennette  
Amy Johnson  
Bruce and Margie Johnson  
Darcell and Mark Johnston  
Janet Lacoste  
Dianne Malesko

Patricia and Timothy McIsaac  
Michelle McNulty  
Dan Miarka  
Jackie and Mike Moore  
Victoria Morgan  
John and Laura Morrissey  
Nissan Vehicle Connected Services  
Judith Rabbai  
Mark and Charles Sehi  
Sehi Computer Products, INC.  
Donna and Wayne Slowinski  
Ehsan and Nighat Taqbeem  
Michele and Robert Taylor  
Stephen and Ann Templeton  
Tammy and Mark Timm  
Dori Turner  
**Dr. Bruce Jones**  
Joan Jones  
**Grace Joppich**  
Dean Keiser

**Ray and Grace Joppich**  
Bernadette and Gary Bowker  
**Mike Kandel**  
The Kandel Family  
**Robert K. Kane**  
Gwen Rogers  
**Charlie Kehr**  
Manitou Restaurant  
Marie Moorey  
Water's Edge Dentistry  
**Steven Kelly**  
Dayna Webster  
**Kathleen Kilgus**  
Will and Barbara Lynch  
**Jamie Koning**  
William and Nancy Fronk  
**Inge Kraimer**  
William and Suzanne Hoff  
**Mike Kurtz**  
The Joe Kozlowski Scholarship Fund  
**Jerry Lardie**  
Ethel Aldridge  
Janet and Judith Bay  
Barb Bierlein and Tom Dillon





William and Beatrice Brown  
Margaret Bushnell  
Roberta and James Chrestensen  
Barbara and Bob Coulter  
Garry and Marlene Curtiss  
Karen Dick and Ramona Jesse  
Katherine and James Downer  
Kristen Elliot and Perry Harmon  
Cathy Eubanks  
Mary Franklin  
Roger and Karen Frueh  
Nancy Gallagher and Robert Longman  
Cliff and Susan Girard  
Gary and Beth Hart  
Jim, Dave and Jenn Hart  
Carol Hueller  
Bruce and Janine Lehmann  
Mary and Larry Melendy  
Peter Prouty

Todd and Carrie Robbins  
Summit Industries  
Richard and Consuelo VonAchen  
Barbara Wilbur  
Michael and Emily Woods  
**Tom Lattin**  
Cynthia Lattin  
**Donald R. Lewellen**  
Barbara and Eldon Lewis  
**Alberta Lindstrom**  
Eric Sorenson and Cathy Kashanski  
**Bob Lorenz**  
Tamara Everett  
**Joseph Magliochetti**  
Rod and Joan Durgin  
**Ann Wheeler Smith Marshall**  
Berkshire Hathaway Home Services New England Properties  
Jaqueline Newmyer-Deal  
Andrew Marshall  
**Robert E. Marshall**  
Dean and AnneMarie Nishi

Margie and Phil Smith  
**Dr. John D. Martin**  
Robert and Jo Ann Skabo  
**Robert Martin**  
Robert and Sue Cain  
**James May**  
Barbara Manning  
**Ari Mazer**  
Lawrence and Marianne Talon  
**Bill McAnallen and Peter Bacon**  
Tom and Carolyn McAnallen  
**Jerry McAuliffe**  
Anonymous  
**Diane McDonald**  
Dori Turner  
**Basil Albert Miner**  
Robert and Kristen Miner  
**Jack Monson**  
Ann Rogers  
**Dan Morof**  
Ted and Andy Ehler  
**Nancy Morrison**  
Sladie Morrison

**Marylou Murphy**  
Rob Nichols and Marilyn Butler  
**Denton W. Nelson, MD**  
Michele Nelson and Brett Cohen  
**Art and Doris Nerbonne**  
Mike and Nancy Nerbonne  
**Anne O'Connell**  
John and Marcia Teichman  
**William R. Olsen**  
Jon and Mary Armstrong  
Carol and Fred Edmonds  
Timothy Esser and Linda Blakkan  
Marvin Kirsh  
Lynn Larson and Paul Christ  
Richard and Norma Sarns  
**Paul Oppliger**  
Sue Oppliger  
**Joe Pagliuca and Daniel Follmeier**  
Richard and Jennie Schmitt



**Joseph Pagliuca**

Dori Turner

**Mason and Ellen Palmer**

Sandra Palmer Zilincik

**Our beloved dog, Panda**

Sue and Tom Dionne

**Maxine and Eugene  
Pelizzari**

John and Theresa Pelizzari

**Gordon and Cecelia  
Peschke**

Alan and Lenore  
Hutchenreuther

**Michael Plester**

Marie Plester

**Thomas Powers**

Connie Powers

**Jack Price**

John Price

**Rick Pringle**

Kemp Wilson

**Mr. and Mrs. Elmer  
Rabanus**

Carol Rabanus

**Timothy S. Reed**

Melissa Reed

Star-Key Home  
Owners' Association

**Debbie Smith Reinking**

Pete and Shari Clason

**Zora Richardson**

Jan Leuallen

**Jim and Mollie Rogers**

David and Kathryn Snell

**Stuart Rogers**

Colette Stanish

**Robert Rudd**

Don and Arlene Daley

Juliana Fernandez

Bruce and Natalie Murray

John and Amy Pflughoeft

Cheryl Phelps

Elizabeth Rudd

Thomas and Anna Rudd

Pat and Lyn Salathiel

William Scharf

Gloria and Adam Veltman

Kathleen Weede

Alan West

John Zaremba

**Jo Rundio**

Lois Feichtenbiner

Michael and Sharon Herron

Ben and Sally Lundquist

Pug Rundio

**Herbert E. Sawin II**

Eric and Amy Mueller

Pat Sawin

**Bob Schiewe**

Linda and Craig Hanson

**Pam and Ted Schultz**

Barclay Shultz

**Victor G. Schwenke**

Lester and Joanne Teague

**Eda June Scott**

Wendy Scott

**Janet M. Shalla**

Bill and Irene Scott

**George E. Shambaugh, Jr**

George and Roberta  
Shambaugh

**Stuart Sharp**

Linda Sharp

**Ted and Andy Shepard**

Bonnie Shepard

**Rita and Charles Simpson**

Phyllis Jenson

**Mary Sorrell**

Lee and Shirley Janssen

Six Mile Lake Association

Cliff Sorrell

**Dr. John R. Spencer, MD**

Doug and Chuanping Amick

Thomas Bensley

Liz and Peter Bruning

William and Sandy  
Cartwright

K. Ross and Helen Childs

Glen and Rebecca Chown

Jean and Robert Cline

Charles and Penelope Curry

Robert and Marcy Ford

David Fuhrhop

James and Patsy Gallagher

Martha Garber

Grand Traverse, Leelanau  
and Benzie County  
Medical Society

Hagerty Insurance Agency

The Family of Frank Jeffs

Kirsten Keilitz

The Mallozzi and  
Ventura Families

Anna Marten

Cathy and Paul Minster

Oleson Foundation

Platte Lake Improvement  
Association

Joyce, Tom and  
Jane Rombouts

William Scharf

Jan Schmidt

Scott and Lynn Shattuck

James and Kelli Spencer

Mark and Kathy Spencer

Dan and Leslie Walsh

Deborah and Todd Wilson

Michal and Jay Youngflesh

**Dr. John Spencer and  
Charmaine M. Spencer**

Mark and Kathy Spencer

**Lyman F. Spitzer**

Patrice Spitzer

**Adrienne S. Stephen**

Anonymous

Michael and Denise Balon

Mark, Cora, Stephen, Alli,  
Tracie, Jason, Lauren  
and Chris Houghan

Lisa Karriveau

Lorna and Bryan Koscielny

Mr. and Mrs. Hugh H. Laird

Lawrence and Lorna Massa

Kevin and Barbara McGraw

John and Linda Switzer

Robyn and Jim Woolcock

**Lou Ann and Richard  
Tasch**

Gary and Carol Tasch

**Joseph Thompson**

John and Janice Thompson

**James Thorpe**

Linda and Greg Jaris

**Norman Ueno**

Douglas Zernow and  
Marilyn Ueno

**Rosemary Wagner**

Lou Ann and Robert  
Churchill

**Sanford Waldon**

Laurence and  
Barbara Jackson

**Pamela M. Weddell**

Greg and Maggie Weddell

**Steve Weitz**

Donna Weitz and Bill Smith

**Robert Lee Wilson**

Sue Wilson

**Benjamin Winburn**

Deborah Bunker

**Sally Wiper**

William and Barbara  
Vaughan

**Blanche Worm**

Jeanne Salathiel

**Juanita Zeinstra**

Joyce and Mike Enlow

Lois Feichtenbiner

**Juanita and Henry  
Zeinstra**

Eleanor Gorman

**Joe and Jim Zimmerman**

Cathy Eubanks



# HONORARIUMS

**JANUARY 1 – DECEMBER 31, 2017**

Your honorarium gift provides an enduring tribute to someone or something significant in your life. Gifts were made in honor of the names shown in bold.

**Hedy Allen**

John and Grace Gast

**Connie Armstrong and Chuck Grabel**

Constance Metcalf

**Foy and Joel Baillie**

Shirley and Paul Edmond

**George Wood Beeler**

Jane Greenfield and Janet Nesin

**Lenore Berlin**

Barb and Gregory Mort

**Reg Bird**

Joan Dedo

**Jim and Joani Braun**

Jim and Mary Jo Braun

**Lois Breimeier**

Carol Breimeier and Family

**Tim Brick**

Emilia Rennie

**Evan and Virginia**

**Calkins**

Thomas and Sarah Oxnard

**Sarah Campbell and Bill Gittlen**

Pete Meyer and Elisabeth Del Buono

**The Carmien Family**

Edward Carmien

**Glen Chown**

Christine Arvidson and Henry Doss

Joyce Delamarter

**Douglas Peter Clason**

Todd Clason

**Sharon Clason**

Todd Clason

**Portia Dean**

Thomas Crampton

**Jen and Ryan Deisler**

Rob Peters

**Paula and Bryce**

**Dreeszen**

Tom and Myrna Hitchman

**Matthew Ellsworth**

Rather Stanton

**Epic Biking Success**

Susan and Sanford Birnholtz

**DJ Evans**

Chad and Monica Evans

**Mike Feichtenbiner**

Lois Feichtenbiner

**Tobin and Gretchen**

**Fraser**

Don and Nancy Fraser

**Joe Frederick and Emily Cook**

Roger and Lynn Brown

**Carlton Fry**

Andrea Fry and John Floyd

Erin Fry

**Marcia Gest**

Cameron and Fran Wolfe

**Dr. and Mrs. Daniel Guyton**

David Duggan

**Tom Hart**

Alyssa and Adam O'Brien

**Phil Hart**

Cyril and Jacqueline Thiel

**Steve and Jodie Haynes**

Jeanne and Michael Haynes

**Barbara Heflin**

Pete Swartz and Lori Franz

**Jill and Rex Holden**

Howard, Elizabeth and Haley Dole

**Huntzicker Family**

Eileen Huntzicker

**Integrity Properties**

Coldwell Banker Schmidt, Realtors

**The Irwin Family**

Scot and Jilanne Egleston

**Jennifer and Brian Jaffe**

Charles and Susan Davidson

**June Janis**

Allen Janis

**Harry Janis**

Carol Krigbaum

**Gerald Jehle**

Janet Jehle

**Dean and Gloria Kelley**

Melissa Reed

**Robert and Karen Kingon**

Martha Katz and Marshall Kreuter

**Brad Lyman**

Jeremy Lyman

**Eric Maklebust**

Coldwell Banker Schmidt, Realtors

**Robert Marshall**

Ryan, Kelly, Maya and Reese Fisher

Christine, Jeff and Tom Goebel

Bruce Henderson

Robert Marshall

**Kenneth Masck**

Jim and Nancy Cox

**Lisa Mason**

John and Florence Hoffmann

**Phillip and Nancy Meek**

Kathy and Tom Lehner

Brian and Lori Meek

**Harriet Miller-Brown**

Emilia Rennie

**Terry and Linn Mitchell**

Barry and D. Karen Andrews

**Bruce Montgomery**

Art Bukowski

**Paul and Paula Moyer**

Elliott and Sandra Brown

**Dennis Murphy**

Kristi Messing

**Judy Murphy**

Kristi Messing

**Mike and Nancy**

**Nerbonne**

G. Patrick and M. Judy Nerbonne

**Stephen Norman**

Kat Norman

**Eugene Pachulski**

Michael and Victoria Pachulski

**Kathy Partin**

Julie Clynes

**Sue Peters and Dave**

**Murphy**

Stephanie Santoro

**Pete and Elaine Peterson**

Carrie Twigg

**Shannon Pronger**

Todd and Angel Pronger

**Charlie H. Rodes**

John and Julie Rodes

**Martha and Nelson**

**Rodes**

John and Julie Rodes

**Bob and Leslie Roe**

Robert and Jane Holdeman

**Alfred and Genevieve Romanowski**

Richard Romanowski

**Lewis Roubal**

The Staff at the Michigan Department of Health and Human Services

**Dr. Alexander and Mrs. Peggy Ruthven II**

Daniel and Cynthia Collier

**Karl and Jane Seng**

Bob and Donna Kondek

**Lewis Shapton**

Joe and Elise Brooks

**Gary and Sheila Sherwin**

Coldwell Banker Schmidt, Realtors

**Heather Shumaker**

Joyce Delamarter

**Jan Shurte**

Elk Rapids Garden Club

**AJ and Caroline**

**Siegmann**

James and LaRayne Siegmann

**Jason and Havilah**

**Siegmann**

James and LaRayne Siegmann

## Honorariums — *Continued*

**Ken Smith**

Robert Carstens

**Maureen Smyth**

Bercini Family Foundation

**Carolyn Swift**

Nancy Swift

**Gary and Carol Tasch**

William and Karen Tasch

**Rick Tasch**

William and Karen Tasch

**Dr. Terrie Taylor**

John and Rebecca Bercini

Roy and Lou Anna Simon

Donna Weitz and Bill Smith

**Jeanne Townsend**

Kathy and Paul Weiner

**Ron and Cynthia Tschudy**

Stephen Phillips

**Nancy Turner**

Anonymous

**Gage Vandermeer**

John and Jeanne

VanderMeer

**Will Vandermeer**

John and Jeanne

VanderMeer

**Mike and Wendy Walker**

Henry and Ginny Martin

**Kira and Darian Walkup**

Jim and Dottie Spousta

**Watervale's 100th****Anniversary**

Thomas and Jane Jenkins

**Dan and Polly Welburn**

Thomas and Marcy Welburn

**Gloria Whelan**

Linda Rexer

## GRANTS FROM STATE AND FEDERAL GOVERNMENTS AND PARTNER ORGANIZATIONS

Public grants help to leverage and maximize the value of your private investment. The Conservancy is either a direct recipient or a sub-awardee of grant funding from the following:

American Farmland Trust

Conservation

Resource Alliance

Environmental Protection

Agency, Great Lakes

Restoration Initiative,

Invasive Species Network

Grand Traverse

Band of Ottawa and

Chippewa Indians

National Fish & Wildlife

Foundation, Sustain our

Great Lakes, administered

by the Nature Conservancy

US Department

of Agriculture

US Fish & Wildlife Service

– Great Lakes Fish and

Wildlife Restoration Act

## CONSERVATION EASEMENT AND LAND DONATIONS

Over 20,000 acres of land have been permanently protected by landowners like you who have placed permanent, deed-restricted, conservation easements on their property in order to ensure that conservation values—the health and wealth of these precious lands—are maintained forever.

**CONSERVATION EASEMENT DONATIONS**

Charles and Jeannie Chapin

William and Susie Janis

Louise Ladd

Timothy and Jessica Lindstrom

Susie Mackay

Robert and Lois Manigold

Kirk Marckwald and Chris Desser

Gary Pomeroy

Phyllis Robinson

Nathan Schultz and

Stephanie Woodfin

**LAND DONATIONS**

The Estate of Mary C. Francis

Donna Rottenbucher



# LAND PRESERVATION AND PROTECTION PROJECTS

Your gifts directed to the specific projects below help to protect our significant places. Many projects can take years to come to fruition. Your donations support the development of relationships with landowners, as well as our ability to perform environmental due diligence, conduct appraisals, work through negotiations and closings and strengthen our community partnerships.

## Acme Bayside Park Improvements

Charlene Abernethy  
and Mike Gill

Alfie Embroidery Inc.

Jean and Bob Aukerman

Art and Theresa Bak

Barbara Cochrane

George Comden

Comfort Keepers, Russ  
and Leslie Knopp

Concerned Citizens  
of Acme Township

David and Claudia Fry

Robert and Kathleen  
Garvey

Mr. and Mrs. James  
R. Gilson

Lois Goldstein and  
John Heiam

Kathleen and Mark Guy

Donna Hagan and  
James Heffner

Jennifer and Brian Jaffe

John and Connie Kerns

John and Nancy Morris

G. Patrick and M.  
Judy Nerbonne

Mike and Nancy Nerbonne

Tim and Julie Puckett

Larry Quimby

Denny and Fred Rohn

Jeanne Salathiel

Kristen Salathiel  
and John Failor

Art & Mary Schmuckal  
Family Foundation

Dan and Beth Stainforth

David and Lynn Starkey

Tom's Food Markets

Jeff and Ben Watts

## Arcadia Dunes Stewardship Endowment

Charles Stewart Mott  
Foundation

## Arcadia Marsh Nature Preserve

Tripp and Chia Huei Amdur

Arcadia House Bed  
& Breakfast

Jannine Baker and  
Craig Locke

Andrew and Eunice Barbera

Bill and Kathy Beck ◇

Sandra and Mike Becker

Reverend Ted Beiderwieden

Berkshire Hathaway  
Home Services New  
England Properties

Aaron Beyette and  
Lisa Herkelrath

Gloria and Jerry Boyd

John and Marilyn Brickler

Sandra and Michael Buhrt

Michael and B.K. Byrne

Kathleen Campbell

Doug and Sally Cook

Joyce Delamarter

John Dillworth

Maggie Duncan

Mary Engdahl

John and Char Ester

Bill and Sue Frederick

Doug and Terri Gast ◇

Thomas Gast and  
Sue Leason

Linda Grubaugh

Mary Jo and  
Gerald Hamlin

Linda and Craig Hanson

Karen Kammerschen

Don Kogut and  
Ann Standke

Rev. Oscar and  
Shirley Kraft

Carole and Willie Lee

Lions Club of Arcadia

Sally and Patrick Manke

Andrew Marshall

Robert and Nancy Marshall

Margaret Moran

Sharon Murphy and  
Sharon Montonye

Jaqueline Newmyer-Deal

Ellen Northway

Joan Olsen

Melba and Paul Panhorst

John and Susan Paulson

Virginia Pear

Thomas Phillips

Emilia Rennie

Charles and Sara Rodeck

Howard Schaefer

James and Heather  
Schmiedicke

John and Lynn Steben

William and Cheryl  
Sullivan

Stanley and Judy Verheul

Avace and Bruce Wildie

### **Benzie County Fund**

Daniel and Cynthia Collier  
Marie Moorey  
Jane Purkis  
Avace and Bruce Wildie

### **Chain of Lakes Fund**

Robert and Anna Rita Barron  
Herrington-Fitch  
Family Foundation

### **Chain of Lakes Watershed Dole Family Foundation sub fund**

Dole Family Foundation

### **Charlie Kehr Memorial Trail Connector at Railroad Point Natural Area**

Thomas and Susan Kehr  
Marcia Lee

### **Coastal Dune Protection**

Rick and Kathy Brown  
Thomas and Suzanne Scott

### **Copeland Farm**

The Abbatiellos  
Anonymous  
Julie Baker  
Robert Baker and  
Kimberly Fletcher  
W. Dean and Carol Bigelow  
Joseph Boner  
Susan Brown  
Richard and Sharon Bruner  
James and Michele Butcko  
Robert and Ruth Campbell  
Max and Reatha Cochran  
Ronald and Paula Creed  
Dick and Carol Crout

John Dewildt  
Sandra Ehlers  
Ted Ewald  
John Freeman and  
Mary Rose Farrington  
Gordon Friese and Mary  
Anne Rivers-Friese  
Paul Gambka  
Jane Greenfield and  
Janet Nesin  
Fay Harris  
Kathy and Rich Huseltine  
Allen Janis  
James and Hillary Janis  
Mark and Janet Janis

Rus Janis and Connie Snow  
James Jensen  
David and Susan Karmon  
Carol Krigbaum  
L.T.C. Automotive, INC.  
Lett Family  
Gloria, Thomas and  
Paul McClay  
Thomas and Shelle  
McElwee  
Patrick and Jan McNerney  
Leslie Modrack  
Nelson Family Fund of  
the Bank of America  
Charitable Gift Fund

James and Debbie Norling  
Rebecca Norris  
Robert and Sally Petersen  
Patrick Pierce  
Duane and Rebecca Ruttan  
Nancy and Hubert Ryan  
William Scharf  
John and Marilyn Sims  
Patrick Smolinski  
Linda and John Spevacek  
Audrey Thomas  
Sam and Ginny Vance

### **Falendar Family Endowed Fund**

James and Fran Falender

### **Farmland Protection Fund**

American Farmland Trust  
Brookby Foundation  
Consumers Energy  
Foundation

Frey Foundation  
Leonard Goodman  
Kathy and Paul Weiner

### **Land Acquisition Fund**

James Gibson and  
Marzena Fryc Gibson  
Barclay Shultz

### **Maple Bay Farm House Renovation**

Ross and Emily  
Abrahamson  
Deanna Arntson  
Vickie and Herwig  
Baumann  
Rick and Elizabeth  
Bellingham  
Scott and Suzette Blair

Mary and John Blanchard  
Alan Bliss and Jan McNish  
Jeanne Boyd  
Bob and Nancy Brick  
Tim Brick  
David and Patricia Brogan

Pepper Bromelmeier  
and Thomas Brown  
Cindy Browne and Neil Lau  
Edwin Campbell  
David and Marcia Carney  
Felix Casillas  
Kevin and Shannon  
Celarek

Charles and  
Jeannie Chapin  
Alice Chema  
Gary and Mary Chenoweth  
Leslie and O. Ann Chinn  
Nick and Virginia Colucci  
Sheri and Steve Constantin



Sandy and Dean Coobac  
 Lisa Cooley  
 Jim and Nancy Cox  
 Dick and Carol Crout  
 John and Sharon Dolton  
 Carole Donaldson  
 Dale and Anna Ducommun  
 Raymond and Nancy Duede  
 Mackenzie and Marcia Endo  
 Dan and Ann Ernst  
 Jack and Donna Fahlen  
 James and Creda Feller  
 James and Deborah Fellowes  
 Charles and Mary Fierle  
 Jane Fochtman  
 Edward and Rita Furdak  
 Richard Goerke  
 Ron and Sandy Goodale  
 Elliott and Sandra Greenspan  
 John and Genevieve Hall  
 Kirk and Liz Harrington  
 Donald and Clara Hasenick

Dan and Karen Hess  
 Carol Highsaw  
 Jane Highsaw  
 Illinois Tool Works Foundation  
 Inland Seas Education Association  
 Jerry and Carol Inman  
 Mr. and Mrs. John Jahoda  
 Edward Klim  
 George and Cheryl Knight  
 Walter Kraimer  
 Jerry and Judy Kulka  
 James Lagowski  
 Valerie Locicero  
 Dan and Kathy Flynn Mach  
 Tom and Gladys Maguire  
 Charlotte Marx  
 John and Kathryn Maxson  
 Thomas and Deborah McMullen  
 Curt and Eileen Mikulski

William and Katherine Morgan  
 Northern Michigan Chapter of the American Institute of Architects  
 Oleson Foundation  
 George and Donna Parker  
 Christine Petersen  
 Conrad and Adele Reiter  
 Ann Rogers  
 David and Elizabeth Rollert  
 Linda and Steven Ruby  
 James and Verna Sak  
 John and Margaret Sargent  
 George and Deanna Seifried  
 David Simpson and Anne Pawlak-Simpson  
 Grant and Susan Snyder  
 Mark and Kathy Spencer  
 Linda and Leo Stallman  
 Don Stauffer  
 Gary and Jane Stauffer  
 Fred and Mary Ann Stehr

Robert and Michelle Stephanoff  
 D. W. and Joyce Stibbs  
 Margaret Strong  
 Marvin and Carol Studinger  
 Stefan and Susan Svensson  
 Herbert Swanson  
 Bing Tai and Catherine Allen  
 Mollie Thompson  
 John Timmer  
 Mary Van Valin  
 Eric and Julie VanderHaagen  
 Ralph and Margaret von Walthausen  
 Donald and Ursula Wall  
 Price and Jane Watts ◇  
 Donna and Bill Weltyk  
 Dale and Tracy Westerman  
 James and Gera Witte  
 Ellen and Rick Wojtowicz  
 Erick Zanner  
 Pat Zigarmi

## Milton Township Beach

Wayne Appleton and Laura Septic  
 James Ball  
 Donald and Nancy Blasy  
 Chemical Bank  
 Gary and Mary Chenoweth  
 Daniele and Michael Cobb  
 John and Edith Davies  
 John and Ruth Edick

Joe Fisher  
 James Grant  
 Jane Greenfield and Janet Nesin  
 Rose Hamway  
 Stanley and Betty Holzhauer  
 Jennifer Hopkins  
 Donna and Jerry Klinefelter

Ellen Kurath  
 Nell and Lee Lockhart and Lynn Guernsey  
 Tim Lund  
 Edson Murray  
 Greg and Susan Payne  
 Sarah and Lawrence Peck  
 Arnold and Joan Ratkowski  
 Terry Roote

Bonnie Shepard  
 Samantha Stites  
 Richard and Shirley Vance  
 Phillip Vandenberge  
 Norman Veliquette and Judy Brummeler  
 Melinda and Chris Weinzapfel  
 Donna and Bill Weltyk

## Old Mission Land Protection

Colleen and Robert Barker  
 Catharine and David Bayse  
 Dave Bedell  
 John Bedick  
 Steven and Mary Branstner  
 Century 21 Northland  
 Brian and Robin Dailey  
 Christopher and Patricia Davis

John Dewitt  
 Randall Esler  
 Estate of Harold and Gwendolyn Groves  
 Marcia Gest  
 John and Loretta Harris  
 Janet and Kirk Hewlett  
 Stephen Holder  
 Karen Holstad

Mark and Yvonne Holtz  
 Doug and Lynne Luciani  
 John and Judith Parsons  
 Monnie Peters  
 Lowell and Rosemary Peterson  
 Janette and Alan Pivitt  
 Michael and Alice Rhyner  
 Ms. Susan Scyphers and Mr. Charles Scyphers

Freya Secrest and Jeremy Berg  
 David and Sara Taft  
 Shaw & Betty Walker Foundation  
 Warrington Foundation  
 Diane Wilbur  
 Cameron and Fran Wolfe

### Overlook Trail at Arcadia Dunes

Frank and Lisa Alfano  
Roger and Lynn Brown  
Bill Chamberlin  
Julie Clynes

Drew Smith Photography  
Chad and Monica Evans  
Charles Stewart  
Mott Foundation

David E. Reese Family  
Foundation  
Christopher and Dana  
Reeve Foundation  
Kevin and Lisa Russell

Wendy Scott  
Eric Sorenson and  
Cathy Kashanski

### Pelizzari Natural Area

John and Theresa Pelizzari

### Petobego State Game Area Addition

Brookby Foundation  
Grace Rudd

### Platte River Park Project

Doug and Chuanping  
Amick  
Thomas Bensley  
Peter and Eleanor Blitzer  
Liz and Peter Bruning  
William and Sandy  
Cartwright  
K. Ross and Helen Childs  
Glen and Rebecca Chown  
Jean and Robert Cline  
Charles and Penelope Curry

Paula and Bryce Dreeszen  
Robert and Marcy Ford  
David Fuhrhop  
James and Patsy Gallagher  
Martha Garber  
Grand Traverse, Leelanau  
and Benzie County  
Medical Society  
Hagerty Insurance Agency  
The Family of Frank Jeffs  
Kirsten Keilitz

Kirk and Laura Kolberg  
The Mallozzi and  
Ventura Families  
Anna Marten  
Cathy and Paul Minster  
Oleson Foundation  
Platte Lake Improvement  
Association  
Joyce, Tom and  
Jane Rombouts  
William Scharf

Jan Schmidt  
Scott and Lynn Shattuck  
James and Kelli Spencer  
Mark and Kathy Spencer  
Trout Unlimited Adams  
Chapter #676  
Dan and Leslie Walsh  
Michal and Jay Youngflesh

### Proposed Maplehurst Natural Area

Karen Aeschlimann  
Brian and Lynne Agar  
Allen-Birge  
Charitable Trust  
Mary and James Allender  
Barry and D. Karen  
Andrews  
Anonymous (3)  
Wayne Appleton  
and Laura Septic  
Judy and Paul Arnold  
Deanna Arntson  
Randy and Peg Asmus  
James Ball  
John and Rebecca Bercini  
Kathy and Will Bernardi  
Laura and David Bexfield  
Jeremy Birnholtz  
Jerry and Drieka Bloom  
Patrick and Carole Brady

Elliott and Sandra Brown  
Dawn and Daniel Bruce  
Linda and Buzz Bryson  
Deborah Sjoberg Carlson  
Scott and Mary Carson  
Dr. Salvatore and  
Mary Castronovo  
Dale Claudepierre  
Marilyn and Richard Cobb  
Chris and Julie Conger  
Michael Conrad  
Dewey Insurance Agency  
Elizabeth G. and  
Stanley F. Dole  
Dole Family Foundation  
Evelyn and Howard Ducker  
Edel Consulting  
Debra and Daniel Edson  
Dan and Ann Ernst

Donald and Renee Fedrigo  
Eugene and Sonja Ferries  
Michael and Julie Flashner  
John and Diane Flatley  
Alan Flory and  
Monica Schultz  
Michael Fotinatos  
Norm and Mary Anne Frey  
Ellie and Gus Garrett  
Jim and Lucy Gerlach  
Dean and Sharon Ginther  
Robert and Mary  
Ann Gorlin  
Robert and Sandra Gray  
Thomas Greensmith  
Josh Gruber  
Beth and Wayne  
Guntzviller  
Robert and Sheridan Haack  
Hilary Handler

Liz Hardy and Tom  
Kienbaum  
Jeanne and Michael  
Haynes  
Bill and Heather Hewett  
Wallace and Dolores  
Hibbard  
Hildreth Foundation  
John and Jane Hilliard  
Mollie Hilliard  
James and Marlene Hintz  
Andrew and Terry Hogarth  
William and Myrna  
Holland  
Anna and Oskar Horyd  
Gretchen and Ted Iorio  
Heather Irvine  
George and Joann Janes  
Dan and Charlene Johnson  
Lynne Joyrich



Martha Katz and Marshall Kreuter	Susan Mohr and Ken Krentz	Ian Rinehart	John and Marylou Tanton
Keli and Chris Kenny	Morrissey Equip Corp	Edward and Elyse Rogers	June Thaden
Karen Kerrigan	Morrissey Family Foundation	Family Foundation	Jenn Thom
Bob and Karen Kingon	Douglas and Chandra Morse	Susan and Michael Rontal	Randy and Susan Thomas
George and Cheryl Knight	Barb and Gregory Mort	Dan and Eileen Sajkowski	Torch Conservation Center
Barb and Chris Korynski	Paula and Paul Moyer	Mary Ellen Sarasin	Linda and Stuart Travis
Sanford and Ellen Kossek	Martin and Deborah Mulhall	Laura and Larry Saret	Martha Ann Claus and Joseph M. Visci
Joanne and John Kreag	James and Myra Muth	Stephanie Siegel	Fund for Education of the Bank of America Charitable Gift Fund
Dylan Lewis	Mike and Michele Norling	Marcie Sillman	Kyle and Kari Walworth
Mark Lewis and Elaine Cornelius	David and Marilyn Nussdorfer	Michael Sipkoski	Melinda and Chris Weinzapfel
Samuel Lewis	Lisbeth Oana	Katie Smith	Laura Westerman
Michael and Sandra Lininger	Tammy and Doug Oberski	Amanda and James Sorensen	Kathryn White
Ray and Nancy Ludwa	Donald O'Brien	Jerry Sorgi	White Birch Lodge
Cathy Lyons	Pat and Linda O'Leary	Bob and Jill Spencer	Bruce and Dorothy Wierman
Maplehurst Alumni	Judith Oswald	Linda and John Spevacek	Casey Wiggins
John and Jane Matz	Craig and Judy Passon	Charles and Jackie Stegmier	Frank and Judith Wilhelme
Betty and Richard McCaghy	Greg and Susan Payne	Carol Steiner and Robert Fike	James and Gera Witte
Douglas and Susan McDonald	Katie and Robert Petersen	Mark and Ann Stephens	Ellen and Rick Wojtowicz
Patrick and Coleen McDonald	John and Kathy Peterson	Sherry Stepulla	Karin Wolfe
Sean McKenzie	John and Kathy Peterson	Richard Stocker	Jean Woods
Sharyn Miles	Larry and Kathy Picklo	Sue Strum	Michael and Trish Young
Charles and Elaine Miller	Connie Powers	Irene Sullivan	Catherine and Thomas Zemanek
	Frank Proulx	John Suomi and Heather Butler	
	Judy and John Riley		

## Proposed Upper Manistee Headwaters Preserve

John Arevalo and Gloria Torello	Mark Haynes	Frank Proulx	Camille Weatherholt
Debra Benton	Andrew and Terry Hogarth	Jeff Runyon	Thomas and Cheryl Wegener
John and Rebecca Bercini	William and Janice Hudson	Dick and Cassie Sadler	Sue Wilson
Paul Conlen	Al and Julie Hurd	Diane Samarasinghe	J. A. Woollam Foundation
Rick and Lisa Delaney ◇	David Lerner	Bruce S. Shannon	John Woollam
Mary and Jim Gilson	Mark Maddox and Sarah Sutton	Family Foundation	
Grand Traverse Regional Community Foundation	Sherry and Don Marshall	Tim Sparks	
Michael Grusenmeyer	Carroll Meyers	David and Stephanie Strolle	
Harvey's Foundation	Rebecca Millican	Randy and Susan Thomas	
	Denise Plakmeyer	Trout Unlimited Adams Chapter #676	

## Pyatt Lake Stewardship

Patrick and Carol Conway  
Gary and Carol Tasch  
William and Karen Tasch

## Railroad Point Natural Area

Mary Jane Meier

### **Sand Lakes Trail Corridor**

John Ammar  
Anonymous (5)  
Baird Foundation, Inc.  
Rebecca Beach  
Kathryn Bradbury  
Doug Burcicki  
Sara Cockrell  
Elizabeth Collins  
Paul Conlen  
Don and Yvonne Cunkle  
Mary Daugherty  
Eric and Kathie Dreier

Daniel and Carly Ellis ♦  
John and Gina Erb  
Brian and Vera Fisher  
Robert Frank  
Amelia Hasenohrl  
William Hecht  
Sean Hickey  
John Hoffman  
Iceman Promotions, Inc.  
Marilyn Kamp  
Armen Kassouni  
Steve and Sharon Largent

David Lerner  
McLain Race Team  
Kim McNeil  
MyRaceSticker.com  
Northern Michigan  
Mountain Bike Association  
Dale Ostema  
Dan and Jill Packer  
Diana Raddatz  
Kathleen Regnier  
Glen Ruczynski  
and Ali Bridson

Matthew and  
Adrienne Russell  
Serendipity Endowment  
at the Community  
Foundation  
Edward and Susan  
Shipman  
Colette Stanish  
Daniel and Jenifer Stiebel  
Philip and Susan Tarczon  
Priscilla Ware and  
Robert Davis  
Laura and Craig Webb  
Tom White

### **Severance Creek Conservation Easement**

Harry A. & Margaret D.  
Towsley Foundation

### **Skegemog Wildlife Area**

Vernette Cauchy  
Community Foundation  
Evelyn A. and Charles H.  
Drummond Skegemog  
Lake Wildlife Area  
Education Endowment

David and Margaret Hauser  
Allen Janis  
David Quinlan  
William Scharf  
Audrey Thomas

John Trezise  
Paul and Delphine Welch  
Cheryl Wilson  
Arthur and Jean  
Yeager Family

### **Stanek Farm on Old Mission Peninsula**

Estate of Harold and  
Gwendolyn Groves  
Monnie Peters

### **Stewardship**

Sue and Tom Dionne  
Alan and Lenore  
Hutchenreuther  
The Kandel Family  
Dave and Barb Mahan

### **Stewardship Endowment Fund**

Marlene and Terry Caszatt  
Jeffrey and Barbara Ellison  
Jennifer and Brian Jaffe  
Linda Kehr  
Ben and Sally Lundquist  
David and Lorah MacIntosh

Robert and Nancy Marshall  
Amy and Clark Shuler  
Ann and Al Taylor  
Tria Bordo Farm, LLC  
Andrew and Noelle Wolff  
Thomas and Kaye Yocum





### Timbers Recreation Area

Daniel and Kristine Drake  
Tim Edman  
Debra Eifler  
Roger and Ann Looyenga  
Barb and Gregory Mort  
Michael and Bethany Onthank  
Derk and Shannon Pronger  
Thomas and Lisa Schermerhorn  
Andrew M. Vander Molen Foundation  
Charles and Ann Weitz

### Torch Ridge Farm Easement

Anonymous (3)  
Daniel and Kay Boone  
Christopher Conner  
Robert and Leslie Cooper  
Jack and Janice Ducsay  
Steven and Sallie Foley  
Dottie Gerrity  
Dan and Laura Lorimer  
Denny and Deb Malone  
Kevin and Sue Malone  
Terence Malone  
Richard and Diana Milock  
Roy and Susan Nichols  
Thomas and Anita Nordberg  
Tye Nordberg  
Susan and Tom Palmer  
Joe and Jill Parker  
F. Verne Powell  
George and Nancy Powell  
Mary Richards  
Sue Ann Robert  
Susan Schuler  
Jennifer Sherman

Samuel and Veronica Smith  
George and Shirley Spaniel  
Ralph and Barbara Thayer  
Torch Conservation Center  
Jane and Tom Weaver  
Charitable Fund  
Joy and Theodore Whittlesey  
Max Wicha and Sheila Crowley

### Trail Creation and Maintenance

Michael and Kathleen Bruno

### Trapp Farm Nature Preserve

Manitou Restaurant  
Water's Edge Dentistry

### Universally Accessible Boardwalk at Arcadia Marsh

The Chicago Community Foundation  
Paula and Bryce Dreeszen  
Charles Stewart Mott Foundation  
Geoffrey Roland Paine Family Charitable Fund of the Community Foundation for Muskegon County  
Community Foundation  
John D. and Susan K. Paul Family Endowment  
John and Sue Paul

### Wintergreen Woods Nature Preserve

Charlene Abernethy and Mike Gill  
Thomas and Merrily Bauer  
Paul and Amanda Brink  
Dawn and Daniel Bruce  
Leon Bussa  
Tom and Jeanne Crosby  
Daniel DeWitt and Lisa Deferrari  
Linda Frank and Klaus Lehrer  
Edward Graft  
Ellen MacKinnon  
Linda Messing and Kenneth Rudisel  
Duncan and Toni Morrison  
Gary Noteware  
Paula Oleson  
Dennis and Mary Penney  
Susan Shimmons  
David and Lynn Starkey  
J. Terry and Barbara Stein  
Christine Varner and Peter Romeo  
Robert and Elinborg Walters  
Gary and Janet Yankee  
John and Marylou Zaloudek

# PRIVATE LAND PROTECTION

**While the parks and nature preserves we protect are open to and enjoyed by the public, more than half of the land we have permanently protected are private properties whose owners have generously granted conservation easements. We monitor these properties annually, often hand-in-hand with the land owners, to ensure that conservation values are maintained forever.**

**We extend our heartfelt gratitude to the following land owners:**

Acme Township	John Carey	Phil Edwards and Laura Reid	Jim Highsaw and Linda Prentice
Alan Adams	Andrew and Andrea Carolus	Ralph and Mary Ellen Edwards	Frances Housman
Dorance and Julia Amos	Shirley Carris	Russell A. and Pat Ehler	Russell and Kay Hughes
Roland and Marilyn Andreasson	Marlene and Terry Caszatt	Phil and Rita Ellington	Mark Hullman
Anonymous (2)	Cedar River Group, LLC.	Jeff and Marilyn Elliott	Inn at Watervale
Antrim County	Mike Champion	Daniel and Carly Ellis	Dean and Kurt Iverson
Antrim County Conservation District	Charles and Jeannie Chapin	Evans Brothers Fruit Company	Bill and Susie Janis
Baillio Company	David and Jody Charlton	Laura Fisher	Alice Jeffers
Mark and Elizabeth Banker	Chartwell Properties, LLC.	Chip and Terrie Frey	Village of Kalkaska
Mark and Karen Barbera	Glen and Rebecca Chown	Cameron and Dawn Fuller	David Kelley
Bash Enterprises	City of Traverse City	G.D.O. Investments LLC	David and Katy Kern
Thomas and Ardis Bauer	Tom and Janice Cook	Garfield Township	Tom Kladzyk
Bay Harbor Club Association	Richard Cooper and Jan Tennant	John Gehring	Anthony Kramer and Barbara Bailey
Bayshore Real Estate Associates #1	Bonnie Copeland	Gene Gerring	Brent and Tami Kroll
Dennis Beal	Croft, LLC	Brian and Lisa Getty	Bruce and Libby Krone
Leon and Shirley Beal	Crystal Highlands Owners' Association	Jeremy Gibson and Carolyn McDonald	Margery and Laurence Kroupa
Bill and Marti Beals	Richard and Linda Cushman	Gordon Gienow	Louise Ladd
Margaret Beck	James Dalley and Lois Brennan	Judy Gienow	Cliff Larkins
Michael and Leah Bell	Jeannette and Luc De Vigan	Ron and Diane Gillison	Leelanau Conservancy
Robert and Barbara Below	Alice and Jerry Deck	Matthew Godlewski and Jacob Whitman	William Lentz
Linda and Craig Bethke	DEER Development Engineering	Gloria Goodale and Dan Wood	Joe and Kathy Lessard
Roland and Katy Bielert	G. Michael and Barbara DeGraeve	Margo Goodale	James and Judy Leto
Boardman Township	Michael and Claudia Delp	Nick Goodale	Ryan and Logan Lockman
Philip Bolton	Michael and Ann DeVries	James and Sharon Goodheart	Long Lake Township
Mary Ellen Boucher	Harold and Edna DeYoung	Charles and Bethany Goodman	Calvin Lutz
Matthew and Joni Bregman	Lance and Allyson Docken	Ann and Harold Gurian	Charles Lyon
Ruth Briggs	J. Bennett and Tauna Donaldson	Donald and Heidi Hamilton	T. Grace Macdonald
Lee and Richmond Brown	Deborah Doyle	Anne Hammond	Susie Mackay
James and Justine Buck	Roger and Angelica Dunlap	Thomas Hanna	Bob and Kris Mampe
Keith Burns	Earl and Susan Dutton	Alan and Carol Hart	Robert and Lois Manigold
Bruce and Rhoda Bush	Julie and Jim Dutton	Jed and Dawn Hemming	Francia Mann
Jon Bylsma and Jennifer Johnston	Martin Easling	David and Barbara Henton	Kirk Marckwald and Chris Desser
Kathryn Bytwerk	Laurie Eberhardt and Peter Martin	Todd Herber	Dirk and Mary Martin
Pat Capps	Kenneth Edwards	Carol Highsaw	William and Joan McCool
Archibald Carey			McGuire Real Estate Company LLC
David and Nancy Carey			Melinda Wagner 2014 Revocable Living Trust



Robert and Joni Metiva  
Amy and Dan Meyer  
Jean Meyer  
Philip and Connie Micklin  
Kelly and Debra Miller  
The Philip E. Miner  
Revocable Trust  
Susan Montei  
Neahtawanta Resort  
Association  
Steve and Kathleen  
Newman  
Scott Nugent  
Wendy O'Brien  
Leobardo and  
Carmelita Ocanas  
OCS Watervale Ltd.  
John O'Hair  
OHK-SEK  
Peter Ohrnberger  
Brad Oleson  
DJ and Lisa Oleson  
The Oleson Foundation  
Dustin and Kim Ordway  
Paradise Township  
Paul Pelica  
James Petrie  
Gary Pomeroy  
James and Anne Porritt  
Steve Pray

Brian Price  
Brian and Dodie Putney  
Charlotte Putney  
Loy Putney  
Putney Real Estate  
Holdings, LLC.  
Edith Elliott Queeny and  
Warner Guild Queeny  
Marvin and Jodi Radtke  
Charles and Abby  
Rammelkamp  
Eric and Joni Rammelkamp  
The Ranke Family  
Partnership  
Michael Raphelson and  
Carla Langerveld  
Ray Ravary and  
Mary Carlton  
RF Reiley Family  
Partners, LTD  
Rick and Kay Rieck  
Riverview Rod  
and Gun Club  
Phyllis Robinson  
Robert and Penelope Rosi  
Rotary Camps &  
Services of TC  
Wayne and Joan Rowe  
Royal Farms Properties LLC  
Ralph and Patricia Rugan  
John and Margaret Sargent

Michael and Melissa  
Scanlon  
Nathan Schultz and  
Stephanie Woodfin  
Nancy Seasholes  
Send Brothers  
Properties L.L.C.  
The Shaffer Family  
Partnership  
David and Ingrid  
Shambaugh  
George and Roberta  
Shambaugh  
Gary Shanker  
Michael and Shanna Shea  
Hebe and Jim Shipp  
Virginia Shover  
Steve and Carol Shuckra  
Peggy and Kimberly  
Simpson  
Richard and Diane Simpson  
Loring Sims and  
Edward Smith  
Russell and Kim Sims  
Nicklaus Slocum  
Dale and Carolyn Smith  
Julie and John Smith  
Donald and Glenna  
Southwell  
Reg Sprik

William and Patty  
Springstead  
Laura and Chuck Stanek  
Anne Starr and Kristin Hall  
David Steffey  
David and Sara Taft  
Barbara Taylor  
Barry and Arreta Thompson  
Terry and Constance Timm  
Jennifer Tobias and  
Tom McCracken  
Tosebo Clubhouse, LLC.  
Sally Van Vleck  
Kenneth Vanhouten  
Village Ridge Homeowners  
Association  
Andrew Villov  
Roy and Pamela Volkening  
Randall Vyverberg  
Wayne and Joan Webber  
Wellington Real Estate  
Holdings, LLC.  
Greg White  
John Wilkinson and  
Robin Silva-Wilkinson  
Windward Partnership  
John and Charlotte  
Wuepper  
Isaiah Wunsch and  
Colleen Valco  
Shelby Ziegler



## GIFTS-IN-KIND

We are deeply grateful to the following supporters for your generous contributions of in-kind support:

Ben Barber	Carpet Galleria	Lane Plumbing and Heating	Stephen and Roberta Polk
Ken Barber	Chateau Chantal	Suz McLaughlin, Still Grinning Kitchens	Dale Schneider
Bay Area Recycling	Tom and Laura Evans	Michigan Botanical Club	Carl Steuer Excavating, Inc.
Black Star Farms	GJ's Rentals, Inc.	Olson, Bzdok & Howard, PC	Thomas & Milliken Millwork Inc.
Sarah Bourgeois	Terry Griffin		Suzanne Voltz
Robert Buckner	Image 360		James and Gera Witte
C&C Finishers	Lake Effect		

---

## VOLUNTEERS

Every year, volunteers play a crucial role in the Conservancy's stewardship efforts helping care for 34 preserves and other protected properties spread across five counties. Volunteers built trails, planted trees, made maple syrup, fought invasive species, raised organic produce and grass-fed beef, helped with our outreach, kept our office running smoothly, and led hikes and workdays. We are so grateful you helped care for this land and shared your love for it.

Brian Allen	Betsy Calcutt	Kirk Duncan	Lee Jameson	George Marsh
Nancy Baglan	Bruce Campbell	Tom Dunn	Lee Janssen	Robert Marshall
Kimberly Balke	Cathy Carter	Susan Easlick	Anna Jarvis	Dave Mathews
Richard Barclay	Sally Catanese	Ken Engle	Deana Jerdee	John McCormick
Paul Bare	Mark Cerny	Gerri Erickson	Brad Jones	John Meade
Bonnie Bare	Eric Chatterson	Mary Ferens	Brian Keas	Audrey Menninga
Maddy Baroli	Lou Ann Churchill	Linda Forster	Len Klein	Michelle Moore
Gerald and Katherine Batka	Lucinda Clement	Joe Frederick	Gary Kneale	Cheryl Morgan
Robert Baum	Robert Clement	Caroline Garwood	Arlene Koons	Terry Motley
Rebecca Beach	Don Coe	Pam Garwood	Charles Kraus	Paul Moyer
Jo Anne Beemon	John Collins	Ron Goodale	Darrell Lawson	Paula Moyer
Norman Bell	Doug Cook	Michael Grah	Tony Ligi	Dave Murphy
Darl Bennink	Emily Cook	Terry Griffin	Barry Lishawa	Kristen Naidoo
Audra Bildeaux	Sally Cook	Cheryl Gross	Don Livingston	Joe Nerone
Mary Binder	Nate Crane	Kathleen Guy	Jean Livingston	Michele Nerone
Tim Binder	Barb Czarnecki	Jack Harris	Kathryn Lovings	Marilyn Niebel
Kenneth Blakey-Shell	Daniel Dall'Olmo	Robert Heflin	Mike Lubert	Michael Niebel
Kenneth Bloem	Gail Dall'Olmo	Cherie Hogan	Ben Lundquist	Jill Nieland
Rick Bobian	Cortney Danbrook	Bill Holden	Sally Lundquist	Rick Nieland
Jon Breithaupt	Kim de Bruin	Matt Homan	Dan Mach	Arlene O'Brien
Paul Brink	Joyce Delamarter	Jim Huckle	Kathy Flynn Mach	Craig Olsen
Jay Burt	Martha Dively	Jeanne Hunter	Dave Mahan	Vicki Olsen
	Bryce Dreeszen	Julie Hurd	Rebecca Mang	Gail Parry
	Paula Dreeszen	Jennifer Jaffe	Sally Manke	John D. Paul, Jr



Heide-Marie Post  
Royce Ragland  
Judith Reich  
Leah Robison  
Pug Rundio  
Kevin Russell  
Linda Scribner  
Greg Seman  
Michael Sipkoski  
Betsey Sivec  
Michael Skare  
Bill Smith  
Drew Smith  
Evan Smith  
Maureen Smyth

Henry Somero  
Mary and Cliff  
Sorrell  
Grant Snyder  
Susan Snyder  
Mark Spencer  
Gretchen Staub  
Don Stauffer  
Gary Stauffer  
Jane Stauffer  
Eddie Sullivan  
Nancy Story  
Angela Strong  
Neal Sweet  
Bridget Swesky

Jeffrey Swesky  
Al Taylor  
Terrie Taylor  
Maureen Templeton  
Elizabeth Trense  
Cathy Trense  
Cynthia Tschudy  
Ron Tschudy  
Barbara VanDam  
George Voulemenous  
Mark Walton  
M. Sue Waltz  
Barb Watson  
Chuck Watson  
Flint Watt

Donna Weitz  
Shannon Westgate  
Dennis Wiand  
Karen Williams  
Dave Wilsey  
Ben Wilson  
Deborah Wilson  
Todd Wilson  
Gera Witte  
James Witte  
Ellen Wojtowicz  
Rick Wojtowicz  
Charlene Wylie  
David Wylie  
Thom Yocum

Pauline Young  
John Zaloudek

**Volunteer groups  
we work with:**

Friends of  
Glacial Hills  
Skegemog Wildlife  
Area Stewardship  
Committee

**Businesses:**

Chemical Bank's  
Chemical Cares  
Day Volunteers



"Spending time as a volunteer allows me to see how GTRLC impacts life on so many levels. Preserving lands has an effect on our global health, and local communities reap the economic rewards of preserves and hiking trails that benefit our personal health."

*Sally Manke, Volunteer*





3860 N. Long Lake Rd., Ste. D  
Traverse City, MI 49684  
231.929.7911  
**GTRLC.ORG**



NON-PROFIT ORG.  
**US POSTAGE PAID**  
TRAVERSE CITY, MI 49684  
Permit No. 306



PHOTO BY  
NATE RICHARDSON  
*Field at Maple Bay Farm*