



landscript

SPRING 2015 | VOL. 64 | GTRLC.ORG

Protecting Significant Natural, Scenic and Farm Lands, and Advancing Stewardship, Now and For All Future Generations



PHOTO BY NATE RICHARDSON

Our Annual Report

*Remembering
Abby Mahan Gartland*

HISTORIC OLD MISSION
FARM PROTECTED

IN THIS ISSUE:



PHOTO BY ANGIE LUCAS

- 03 IN MEMORIAM:
ABBY GARTLAND
- 04 SAVED FROM DEVELOPMENT
- 07 MEET THE GTRLC BOARD
OF DIRECTORS
- 08 FALENDER FUND HELPS
SECURE THE FUTURE
- 10 UPDATE FROM ARCADIA
- 12 FOUNDATIONAL SUPPORT
- 15 ANNUAL REPORT
- 17 2014 GIVING



PHOTO BY ANGIE LUCAS

Dear Friends,

It has often been said that change is the one constant in life. With a long winter making a reluctant transition to spring, I have been reflecting on changes, both sudden and gradual.

Over the past few years, the Conservancy has sharpened our strategic focus on increasing access to nature, and we can be proud to claim innovative projects that significantly enhance our region's quality of life. The nearly 50 miles of mountain-biking trails we designed and constructed at Arcadia Dunes and at Glacial Hills are among the very best in the Midwest.

We are also embracing change with our plans to construct Universal Access trails at the Arcadia Marsh and C.S. Mott nature preserves. Providing lifelong access to nature is a worthy enterprise when it is appropriately balanced with preservation goals. And connecting people of all ages and abilities to the magic of nature builds long-term support for conservation.

With the economy recovering in northern Michigan and the real estate market on the upswing, development pressures are escalating in rural areas like the Old Mission Peninsula. We were so grateful when Neahtawanta summer residents mobilized quickly last fall to partner with the Conservancy on saving an historic farm that was threatened by development (see article on page 4). Our region is blessed with some of the most spectacular and diverse agricultural landscapes in the world. Preserving them for agricultural use is a central Conservancy goal.

Change may be a constant in life, but so too is the Grand Traverse Regional Land Conservancy's timeless land preservation mission. In just over two decades, we have built a strong foundation thanks to the generous support of so many individuals and partners who share an abiding commitment to leaving a legacy for future generations.

A handwritten signature in dark ink, appearing to read "Glen Chown".

Glen Chown,
GTRLC Executive Director

IN MEMORIAM

❧ Abby Lynn Mahan Gartland ❧

1979~2015



Extending our deepest condolences to her family, we also thank the hundreds of community members and Conservancy friends who have offered their sympathy as we mourn the loss of our singularly gifted Director of Preserve Stewardship, Abby Mahan Gartland, who passed away on January 29, 2015. With the support of the Stewardship Team, Abby was responsible for much of the biological work at GTRLC's nature preserves, including completing baseline inventories of the flora and fauna on site; she also managed our invasive species program. Abby joined our Stewardship staff in 2001, following the completion of her BS in Fisheries and Wildlife from Michigan State University. Her background in botany, forest ecology, and ornithology allowed her to play a critical role in inventorying thousands of acres of land being considered for protection. GTRLC's Executive Director, Glen Chown, prized Abby's "ability to be strategic, to engage partner organizations, and to help lead networks and alliances that could mobilize quickly."

It was Abby who sounded the alarm about the threat of invasive species along the Grand Traverse Bay and trained volunteers to walk the shoreline to collect scientific data demonstrating the extent of the danger. Along the way, Abby became a mentor and friend to many of the Conservancy's most committed field volunteers. As our Director of Preserve Stewardship, Abby was fiercely committed to enhancing people's access to and experiences on the land. According to Chown, "perhaps Abby's greatest gift is the growing sense of community she built around a land ethic, whereby so many people feel a responsibility to steward this legacy of protected land for generations to come."

To forever recognize Abby Gartland and the significant lasting impact of her work, the Conservancy will designate a precious, 145-acre parcel within the Arcadia Dunes Preserve as a memorial forest in her honor. This land was slated for re-sale until Abby conducted a field survey documenting its ecological uniqueness. She came back to our office armed with an extensive plant list. She then proceeded to make an impassioned and emphatic case that this land be included in our nature preserve. From that day forward, GTRLC staff and our preserve steward volunteers have called this parcel "Abby's Woods." On May 30 we will be gathering at the property to make that name official and permanent, and to savor together this fitting tribute to a woman whose grace and example of caring for our creation—and living each day to the fullest—will be manifest in the wildflowers, songbirds, and coastal forests that she so loved. ♥



PRESERVING AGRICULTURE HERITAGE ON OLD MISSION PENINSULA

As a local farm changes hands, community members save it from development

The vision was to establish an arc of protected land around Bowers Harbor, an ensconced inlet on the west side of Old Mission Peninsula.

The steps were many. The task, enormous.

Yet, with this shared vision—conjured up more than 20 years ago, and sprung into action by the protection of the 60-acre Pyatt Lake Nature Preserve (the Conservancy's first-ever land acquisition)—a movement began* on Old Mission that hasn't stopped since.

This history involves the Neahtawanta Resort Association, the Conservancy, and a dozen or so community families who realized how development could permanently scar the peninsula's rural landscape.

Many moons ago, they came together under the wing of the Conservancy with a plan to protect 10 critical parcels of land encompassing hundreds of acres. They called it the Bowers Harbor Protection Plan.

"We came up with this bold and crazy idea of connecting Pyatt Lake with a corridor of protected land going all the way up to Tucker Point, and including historic farms," says Glen Chown, executive director of the GTRLC.

Many firsts were wrapped up in the project. It was the first time the Conservancy had created a multi-parcel protection program. It was the first-ever multi-

million dollar campaign. It involved the first conservation easement (Tucker Point) and first land acquisition for the Conservancy.

The \$3 million goal for the campaign was achieved, largely due to the fundraising efforts of the Neahtawanta Resort Association, a homeowners' social and planning organization on Neahtawanta Peninsula, a stretch of land that wraps around Bowers Harbor.

Those first bold steps were crucial. "Had we not done those steps, based on heart and connection to the land, we never would have been able to start the Coastal Campaign and continue advancing the protection of the peninsula," says Chown.

Fast-forward 20 years to today. GTRLC and the Neahtawanta Resort Association have come together again to protect an 80-acre

farm located just north of Bowers Harbor on Kroupa Road. Preservation of the Zientek/Kroupa farm means that the land will be used for farming in perpetuity and forever be immune to development.

The Neahtawanta Resort Association was largely responsible for raising the \$325,000 to purchase the conservation easement, which, in turn, allowed the Zientek family, descended from the Kroupa family, to sell the property to a young local farmer, Isaiah Wunsch.

The Zientek/Kroupa farm was one of the last major properties originally identified in the Bowers Harbor Protection Plan that had remained unprotected. Completion of the easement adds another key farm to the peninsula's growing acreage of protected farmland made possible by GTRLC, by concerned residents, and by Peninsula Township's own farmland protection program.

The total acreage of protected farmland on Old Mission Peninsula now exceeds 5,000 acres.

While Chown had been working with the Zientek family for more than 20 years, it was not until Carol Zientek passed away and left the property to her three children that discussions about the sale of the farm and its possible protection moved forward in earnest.

"My conversations with Carol occurred once or twice a year around the kitchen table in their beautiful old farmhouse," says Chown. "We'd sit together, and Carol would share news of her kids, Bob, Diane and Greg."

Carol told Chown she thought preserving the heritage of the farm was important, but that the farm was her children's inheritance, and it would be their decision. All three children enjoy successful careers in other fields, and none of them planned to farm the property.

On one visit with Chown, Carol brought out a copy of the original deed to the farm, signed by Abraham Lincoln in 1861. Chown was speechless.

"I'm patriotic and sentimental about history, and love Abe Lincoln," says Chown. "And I thought, 'we've got to save this.' It's not just preserving a farm and creating a corridor of protected land, but it adds to the very identity of our region."

After Carol passed away, her daughter Diane contacted Chown, knowing that he and her mother had connected, and wanting to pick up the conversation. They talked about a conservation easement and how the arrangement would work. Diane, Bob and Greg all wanted to see the farm preserved if at all possible.

"We viewed preservation with the Grand Traverse Conservancy as a way to secure a memorial to our parents and the three generations before them," says Diane Zientek.

"Preserving our land honors our family legacy for eternity."

"Preserving our land honors our family legacy for eternity."

— Diane Zientek

The Conservancy put out feelers for buyers and discussed applying for grant money, all of which would take time.

Last spring, the family needed the Conservancy to present a plan or the property would have to be sold. It was put on the market, and a bid from a San Diego development firm came in, with speculations of building five-acre estates across the property.

Enter, once again, local residents and the Neahtawanta Resort Association, whose members, hearing about the impending development from Chown, also saw the urgency in preserving the farmland. Association member David Taft explains how the threat of development mobilized him and other members.

"Within a week I found a large Old Mission farming family [Wunsch] who was looking for additional property," says Taft. "Glen introduced me to the Zientek family, and I explained how we would like to buy the property with a farmer, and place it into a conservancy easement, forever assuring that this property—a mix of orchards and forest—would remain a farm and rural area, not a

ZIENTEK FARM

American Proficiency Institute, Inc.

Dennis Arouca & Anne Treadway

William Carruthers

Charles & Jeannie Chapin

Casey Cowell

Brian & Robin Dailey

Brit & Amy Eaton

George Fabe Fund of the Greater Cincinnati Foundation

Marcia Gest

Christopher Gores

Drew Gores & George Warrington

Davis & Jane Harcourt

Thomas & Susan Haydock

Bill & Kirty Heald

Louise Ladd

Susie Mackay

Kirk Marckwald & Chris Desser

J. Elliot & Florence Morrison

Ken & Susan Morrison

David & Sara Osborn

Dick & Ellie Paulsen

Dick & Joanie Paulsen

Monnie Peters

David & Sara Taft

Emily Todd

Thomas & Diane Todd

Howard & Marty Tomb

Nancy VandenBerg

Warrington Foundation

Deborah & Todd Wilson

development plot."

When the association's original funding plan for the easement fell through in late October, David and Sara Taft made a pledge and challenged the association board to raise the \$325,000 to buy out the development rights. Board officers and members raised the funds for the easement in two months by bringing friends and neighbors on board.

Others played a role in the success of the project. Greenstone Farm Credit Services provided financing for Wunsch at a time when it was critical to have a lender who understood the easement and was supportive of the process.

With the pieces falling into place, the deal was closed in January 2015, and the protection of the farm represents a milestone in the Bowers Harbor Protection Plan.

When the transaction was final, the Zienteks could breathe a sigh of relief. "While bittersweet, we feel very grateful and relieved that a local farming family with a lot of ambition and experience will be taking over the reins," says Diane Zientek.

One of the compelling threads of this story is that many of the individuals involved are descendents of the original Kroupa family who were deeded the property more than 150 years ago. Diane Zientek and her brothers are fifth-generation Kroupas; Sara Taft, influential in raising funds for the easement, is a Kroupa; and Isaiah Wunsch also descends from the Kroupa family on his mother's side. Not only is the farm being protected, but it will continue to be farmed by the same family.

Continued



While there are thousands of acres more to protect on Old Mission Peninsula, this was certainly a victory for conservation and agricultural preservation. The farm is located between the three other farms that are permanently preserved by conservation easements held by GTRLC. To the east and south lie the Harbor Ridge and Harbor View farms and to the west across Kroupa Road is the Winds conservation easement. At the eastern end of these protected farms is the Pyatt Lake Nature Preserve.

The Zientek/Kroupa farm has primarily grown tart and sweet cherries over the last several generations. A small pond and 10-acre wetland area rests in the southwest portion of the property.

The protection of this pristine farm is a result of well-tended relationships, of dedicated neighbors, and of a long-term vision that has clocked countless hours to complete and spans across hundreds of acres of majestic land.

The conservancy extends heartfelt appreciation to the families and individuals who made the safe transition of the farm possible. Thanks to those involved, Old Mission residents and visitors will continue to enjoy the vistas of this property—a property deeded by the 16th U.S. president and seeded by the Kroupa family more than a century and a half ago.



On one visit with Chown, Carol brought out a copy of the original deed to the farm, signed by Abraham Lincoln in 1861. Chown was speechless.

* Editor's Note: The first conservation easement in the area, donated by Clarissa Marckwald, actually dates back to 1989 and includes over 1,500 feet of West Grand Traverse Bay frontage and over 40 acres of land. At that time, Rob Manigold was involved as the founding president of the Old Mission Conservancy and as the Peninsula Township Supervisor.

Why does volunteering on GTRLC's Board of Directors feel like such a privilege?

First, it's about the land. GTRLC's Board is a collection of people who are totally connected with unique places that our Conservancy cares for: landscapes and coastlines that are now protected as preserves, parks, natural areas, recreation areas, or sanctuaries, and land protected with conservation or agricultural easements. We Board members live throughout GTRLC's 5-county service area, and each of us has a story to tell about why we share such passion for land protection, stories related to the special places near where we live.

Second, it's about the future. From Board to staff to community partners, the work we do together at GTRLC is about keeping special places in our region special forever. This makes the time we spend sharing these special places with young friends and family even sweeter—because we know first-hand all the complex factors that have to come together to achieve a land-protection goal: scientific expertise to identify high-priority candidates for land protection; patience and respect to work with landowners in transition; a gift for generating community support and garnering resources; organizational and financial rigor; a vision for the future and the follow-through necessary to make “forever” a reality. As Board members it is our honor to lend governance, strategic planning, and fundraising oversight committed to this future.

Third, it's about the people. GTRLC's Board members have worked professionally as educators, CEOs, farmers, accountants, doctors, human resources experts, attorneys, and civil servants. When we meet to review, guide, and plan Conservancy initiatives, we bring a wide range of perspectives to the conversation, and the discussion is informative, challenging, and exhilarating. And GTRLC's staff is absolutely outstanding. Last year executive director Glen Chown received the esteemed Ambassador Award, and in 2012 GTRLC received the National Land Trust Excellence Award, both from the Land Trust Alliance. And as if working alongside the Conservancy's highly trained and thoroughly dedicated staff weren't rewarding enough, our involvement with the region's enthusiastic supporters of land protection makes every outreach opportunity a highlight. Go to www.GTRLC.org and click on “About”: when you check out the profiles of GTRLC's staff and Board members, you'll get a sense of why I feel so privileged to work shoulder-to-shoulder with them on critical land-protection projects.

Better yet, go to www.GTRLC.org/events and join us for a hike or a volunteer work day, and you'll see what I mean!

~ *Bob Marshall, GTRLC Board Chair*

GRAND TRAVERSE REGIONAL LAND CONSERVANCY

BOARD OF DIRECTORS

BOB MARSHALL

Chair

JENNIFER JAFFE

Vice-Chair

KEN ENGLE

Treasurer

KEVIN RUSSELL

Secretary

PAUL BRINK

BETSY CALCUTT

MARCIA CURRAN

CORTNEY DANBROOK*

MATT DRAKE*

KATHLEEN GUY

JIM HUCKLE*

CHRISTIE MCGUE

CHARLIE KEHR

ROYCE RAGLAND

GREG SEMAN

EVAN SMITH*

MARY SWIFT

ALLEN TAYLOR

TERRIE TAYLOR*

DIANE VANDERVEEN

* We were pleased to welcome Cortney Danbrook, Matt Drake, Jim Huckle and Evan Smith to our Board in 2014, and to welcome back Terrie Taylor, who previously served from 2004-2010.



NEWLY ESTABLISHED FUND HELPS SECURE THE FUTURE OF GTRLC

Jim and Fran Falender, who had been making annual contributions to the Conservancy for ten years, wanted to do more to support that work which so closely aligns with their values and principles.

So late last summer, they arranged to create an individual endowment fund at GTRLC.

"Setting up an endowment fund that is identified with our family is a special project for my wife and me that not only makes us feel as if we have done something worthwhile—but would also live on and perhaps act as something our child and grandchildren will think of in a positive way," says Falender.

The fund will reach an established "fully funded minimum" by the end of 2017. At that point, the earnings from the fund can be used where needed most in the operations of the Conservancy—whether that's to maintain a natural preserve, to address an urgent environmental threat, or to provide needed matching funds for a land protection grant.

Arrangements like this are important to the longevity of the Conservancy, providing annual payouts (interest earned from the fund). These annual earnings bring financial stability to the organization, as the principal remains untouched.

While donors have always had the ability to contribute to GTRLC's endowment, says Diane Dupuis, charitable giving specialist, "this new type of named endowed fund that the Falenders established gives donors the ability, once a minimum threshold is met, to create a legacy they can identify and take pride in, while they watch it build and as it continues to accomplish their goals in our region."

Jim and Fran Falender (far right) with their daughter and her family

Jim and Fran Falender are the sole donors of the fund. Their wish is to provide a funding stream that could help with sustaining the good work of the

Conservancy: "Something that will live beyond my own life span that will do something worthwhile," says Jim Falender.

Falender says that he noticed conservation nonprofits often find it more difficult to raise funds to keep projects going than to acquire new land. "And, my hope would be that the work of the Conservancy would not be to provide protection for a little while longer—but in perpetuity."

"I have appreciated the natural wonders of this part of the state, and I am overjoyed that [GTRLC] is doing such an effective job of keeping the area available for future generations," says Falender. "In a world full of environmental challenges, perhaps our section of Michigan can serve as an example for others of what caring for the land can accomplish."

An industrial and academic engineer and scientist, Falender divides his time between the

mid-Michigan village of Sanford and Benzie County's Crystal Lake. After retiring as vice president of science and technology at Dow Corning in 2000, he began teaching and conducting research at Central Michigan University.

Falender bicycles past Railroad Point Natural Area in Benzie County dozens of times every summer. As a child, he summured with his family on Crystal Lake and remembers walking along the tracks at Railroad Point sixty years ago. He and Fran have hiked Conservancy trails south of Crystal Lake, and he occasionally ventures into Traverse City to enjoy Conservancy projects in that area.

"Setting up an endowment fund that is identified with our family is a special project for my wife and me that not only makes us feel as if we have done something worthwhile—but would also live on and perhaps act as something our child and grandchildren will think of in a positive way."

– Jim Falender

Coming from a tradition of philanthropy, Falender and his family have endowed a scholarship fund at CMU and worked with the Midland Area Community Foundation to establish a scholarship endowment for graduates of his local high school.

There are advantages to establishing or contributing to an endowment fund for the donor. It perpetuates the donor's values and serves as a permanent tribute to the donor, now and after the donor has passed.

Donors also appreciate that an endowment makes a significant investment in the future. When Falender was at a stage in life to do more than provide for his family, he wanted to be purposeful about the process. He loved northwest Michigan and appreciated it in a very personal way. He also saw "a continuing need to carry on the work of previous generations to protect more of the beautiful areas that might otherwise be irrevocably changed."

The Conservancy, in return, reaps many benefits. An endowment creates an ongoing source of income,

enhances financial stability, and relieves pressure on other fundraising activities—making GTRLC less vulnerable to the ebb and flow of funding. By allowing for program expansion and imposing fewer restrictions than some funding sources, endowments also allow the organization to meet new challenges.

The Conservancy hopes that others like the Falenders step forward to create endowments. "For donors who understand the 'forever' nature of land protection," says Dupuis, "A named endowed fund provides a way to link their values, their impact—and their names—forever to the work we accomplish here together, now and far into the future."

*For more information on establishing an endowment or making another type of structured gift, call Diane Dupuis at **231-929-7911** or email her at ddupuis@gtrlc.org.*



PHOTO BY AL TAYLOR

GTRLC RAISES LOCAL MATCH, ALLOWING ARCADIA TOWNSHIP TO CLAIM PARK IMPROVEMENT GRANT AWARD



As 2014 drew to a close, our region received exciting news about support for a project dear to our hearts. On December 4, the Michigan Natural Resources Trust Fund (MNRTF) provisionally awarded Arcadia Township \$298,700 to offset nearly 75% of the cost of improving a Lake Michigan beach park in Manistee County. The MNRTF funding was awarded contingent on the successful raising of more than \$100,000 in local support to fully fund the \$405,000 suite of improvements to Arcadia's beach park.

This beloved 10-acre community park, known to some locally as "Sunset Station," was originally protected with Grand Traverse Regional Land Conservancy (GTRLC) assistance back in 2001; now GTRLC, through a partnership agreement with the Township and other entities, is delighted to have raised the funds that allow Arcadia Township to claim their MNRTF grant award.

The MNRTF is a restricted fund established in 1976 to provide funding for public acquisition of lands for resource protection and outdoor recreation, as well as for public outdoor recreation development projects. It is funded through interest earned on funds derived from the development of publicly owned minerals. The Trust Fund board recommends funding to both state and local agencies for development projects and land acquisitions that will allow increased access to public outdoor recreation.

The beach selected for grant-funded improvements

is owned and managed by Arcadia Township and is used extensively by both community members and tourists. The park, with 1,465 feet of frontage on Lake Michigan, is comprised of diverse coastal features, including the shoreline, foredunes, dunes, wetlands, grassland, and forest. Because Arcadia Beach is the only beach that is publicly owned in Arcadia or neighboring Blaine Township, access to this asset is central to the quality of life in Arcadia. In summer, the park hosts considerable activity all day long. At sunset, the viewing area at the beach serves as a gathering spot and important social hub for the community. The lack of Universally Accessible infrastructure, however, means that it's common to see people who use walkers,



PHOTO BY DANA VANNOY

wheelchairs, or push-strollers "sidelined" to the parking lot, away from the primary community gathering. The MNRTF-funded project will improve beach access and viewing access in general, and provide Universal Access in particular.

This development project is a key priority in Arcadia Township's Recreation Plan, Master Plan and Economic Development Strategy. New interpretive and educational signage will inform users about the rich history of the shoreline, plant and animal species in the area, ways to use the site and unique features, such as the shipwreck *Minnehaha* that can be viewed from the Park. The site will also serve as a Blue Water Trailhead, and signage will include information about that program and amenities to kayakers and canoers who visit the site. The project will provide restroom facilities, a ramp to the Lake

Michigan beach, an expanded Lake Michigan viewing area, and picnic and playground facilities, all designed to accommodate universal access.

Arcadia Beach / Sunset Station is one of three projects identified as priorities by a partnership formed around an initiative called **Explore the Shores**. The goal of the partnership is to make Arcadia a world-class destination by creating a network of recreational opportunities that



PHOTO BY DANA VANNOY

provide access for people of all needs and abilities to enjoy Arcadia's truly unique natural resources: the dunes, Lake Michigan shoreline, marsh, wetlands, inland lakes and tributaries, and existing amenities, such as a municipal marina and private tourism-based businesses. The other priority projects are Universal Access at Arcadia Marsh and Arcadia Dunes. Over the last three years, GTRLC has committed staff time and resources to Arcadia Explore the Shores, including: technical skills in land protection and stewardship, botanical and wildlife sciences, administration, volunteers and volunteer coordination, and fundraising.

In learning of Arcadia Township's MNRTF grant award for Sunset Beach, GTRLC Executive Director Glen Chown noted, "We are honored to continue our commitment to this special place by working to secure matching funds for community-requested—and much needed—park improvements. Regional Land Conservancy involvement will also help ensure that access needs are balanced with original land preservation goals."

One person who understood these goals—and what it took to reach them—perhaps better than anyone was

Betty Mitchell, GTRLC's longtime friend and stalwart supporter who passed away in late 2013. As a testament to her belief in our work, Betty earmarked a generous portion of her estate for our land protection and stewardship efforts. In honor of Betty's lifelong love of the Lake Michigan coast and her deep belief in the importance of outdoor pursuits for everyone, GTRLC's board of directors issued a challenge: All gifts

made to the Arcadia/Explore the Shores initiative would be matched from Betty Mitchell's estate gift—dollar-for-dollar—up to \$50,000.

"We want all residents and visitors to have the chance to reap every benefit that arises from experiencing the natural world in all its complexity and wonder," said GTRLC Board Chair Bob Marshall. "We want generations of families and friends to be able to gather in the same places—year after year—treasuring the shared memories that tie them to the land and to each other."



PHOTO BY ANGIE LUCAS

More than 100 like-minded donors who value access to nature for people of all abilities quickly stepped forward to answer the challenge in full, and beyond. Their support, matched by \$50,000 from Betty Mitchell's estate gift, has fulfilled the local-match requirement that allows Arcadia Township to claim their nearly \$300,000 MNRTF grant award.

"It's exciting to see momentum grow out of the community's desire to honor a dear friend and a champion of our natural heritage," said Chown. "Betty Mitchell's legacy lives on in this pioneering Explore the Shores project."

THE FUNDAMENTALS OF GTRLC'S FOUNDATIONAL SUPPORT

Our region's nonprofits and the populations they serve are fortunate to benefit from the community's robust culture of philanthropy fostered by a broad spectrum of charitable foundations.

Support from this sector demonstrated its value to a fledgling land trust in 1991, when Rotary Charities of Traverse City and a handful of regional family foundations awarded GTRLC a crucial collection of 3-year start-up grants. Grants from foundations bring more to a grantseeker than the dollar-value of the grant award: when a nonprofit has undergone the scrutiny of a foundation's sophisticated, professional application screening, a grant award signals to individual donors that the recipient has met some rigorous guidelines. In addition, foundations are uniquely positioned to offer grantmaking that leverages gifts from individual donors through funding mechanisms such as challenge grants.

Strong relationships with private grantmakers continue to fuel land protection and stewardship in our region:

The mission of **Rotary Charities of Traverse City** is to lead positive change in the five-county Grand Traverse region by assisting community organizations to better achieve their missions. Grants are awarded in four categories: capital projects, program grants, organizational capacity building grants, and planning grants. Support for GTRLC has included grant awards to the Conservancy Fund and farmland protection as well as projects such as Pyatt Lake, Old Mission, Seven Bridges, Boardman River, Maple Bay, the Lake Michigan Coast, and Acme Shoreline.

First grant awarded: **1991**

Value of grants awarded to-date:
\$1,124,502

The **Dole Family Foundation** of Grand Rapids, Michigan, has made grants in support of the Conservancy Fund, Elk River Watershed, Loon Nursery, Chain of Lakes, Jordan River, Cold Creek, and Timbers. In 2013 the foundation's trustees established the Dole Family Foundation Chain of Lakes Watershed Land Protection Fund, a ten-year intention designed to have a major impact on land preservation in Antrim County's Chain of Lakes watershed, which includes 14 lakes and a network of connecting rivers and streams. Water that flows from this watershed into East Grand Traverse Bay provides 60% of Traverse City's water supply.

First grant awarded: **1991**

Value of grants awarded to-date:
\$137,035

The **Oleson Foundation** of Traverse City, Michigan, focuses on four grantmaking priorities, including environmental grants "to provide protection and stewardship of our precious natural resources including watersheds, wetlands, farmland, forest land and the overall protection of the Great Lakes." This funding focus has resulted in support of GTRLC's Conservancy Fund and Land Protection Fund, as well as projects at Seven Bridges, Bullhead Lake, Pearl Lake, Ransom Lake, Arcadia Dunes, Pelizzari Natural Area, Pyatt Lake, Acme Shoreline, Maple Bay, and Timbers.

First grant awarded: **1992**

Value of grants awarded to-date:
\$1,824,535

The **Seabury Foundation** of Chicago, Illinois, values environmental sustainability among its philanthropic goals, and awards grants that “allow people to live in an environment that will be sustainable over time.” Past support of GTRLC has included the Conservancy Fund and projects at Railroad Point, the Lake Michigan Coast, and Elberta Dunes. The foundation’s most recent grant was awarded in support of Explore the Shores, a suite of projects around Arcadia that will provide universal accessibility to Arcadia Marsh, Arcadia Dunes, and Arcadia Beach.

First grant awarded: **1992**

Value of grants awarded to-date:
\$300,000

Based in Grand Rapids, Michigan, the **Frey Foundation** provides grants to nonprofit organizations “primarily in West and Northern Michigan, for projects to enhance child development, protect natural resources, promote the arts, and build community.” Past grants to GTRLC have supported the Conservancy Fund and farmland protection, as well as projects in the US 31 Corridor, on the Lake Michigan Coast, in the Jordan River Watershed, and at Six Mile Lake and Railroad Point.

First grant awarded: **1995**

Value of grants awarded to-date:
\$714,000

The **Americana Foundation** of Novi, Michigan, supports “educational and advocacy programs that address the preservation of American agriculture, the conservation of natural resources, and the protection and presentation of expressions of America's heritage.” GTRLC projects funded include Farmland protection, Old Mission, the US 31 Corridor, Lake Michigan Coast, and Acme Shoreline.

First grant awarded: **1996**

Value of grants awarded to-date:
\$345,750

The **Herbert H. and Grace A. Dow Foundation** of Midland, Michigan, makes grants “for religious, charitable, scientific, literary, or educational purposes for the public benefaction of the inhabitants of the City of Midland and of the people of the State of Michigan.” Past grants to GTRLC have supported the Conservancy Fund and projects in the US 31 Corridor, on the Lake Michigan Coast, and along the Acme Shoreline.

First grant awarded: **2001**

Value of grants awarded to-date:
\$2,550,000



The **Charles Stewart Mott** Foundation of Flint, Michigan, featured GTRLC in its most recent Annual Report, noting that 2013 “marked a decade since the Grand Traverse Regional Land Conservancy purchased nearly 6,000 acres in the northwest region of Michigan’s Lower Peninsula with the help of nearly \$8 million in grants from Mott. More than half of that land became Arcadia Dunes: The C.S. Mott Nature Preserve, which today features pristine sand dunes, forests, grassland and two miles of shoreline along Lake Michigan. It attracts a multitude of nature- and recreation-lovers each year and is becoming a cornerstone of economic development in that part of Michigan. The project also reflects the growing role of land trusts in preserving and protecting the state’s most precious natural resources.”

First grant awarded: **1995**

Value of grants awarded to-date:
\$8,677,400

The **Shaw and Betty Walker Foundation** of Muskegon, Michigan, has supported the Conservancy Fund and projects on Old Mission Peninsula and along the Acme Shoreline.

First grant awarded: **2002**

Value of grants awarded to-date:
\$915,000

The **J. A. Woollam Foundation** of Lincoln, Nebraska, is compiling an impressive record of land-conservation grantmaking throughout Michigan and beyond. Projects supported at GTRLC include the Lake Michigan Coast, the Jordan River Watershed, Elberta Dunes, Acme Shoreline, and Timbers.

First grant awarded: **2005**

Value of grants awarded to-date:
\$1,710,000

The **Carls Foundation** of Bloomfield Hills, Michigan, prioritizes in its mission the “preservation of natural areas, open space and historic buildings and areas having special natural beauty or significance in maintaining America’s heritage and historic ideals, through assistance to land trusts and land conservancies and directly related environmental educational programs.” Over the decades the Carls Foundation has supported GTRLC’s land-protection efforts at Pyatt Lake, Wilcox-Palmer-Shah, Old Mission, Bowers Harbor, the Lake Michigan Coast, and the Acme Shoreline. A tremendously effective grant to benefit our Conservancy Fund has doubled the impact of many unrestricted gifts from individual donors over the last three years by way of the Carls Foundation Challenge. This multi-year commitment provides up to \$100,000 yearly to match new and increased individual gifts to the Conservancy Fund. In our first three years donor response has allowed us to fully claim the challenge award, effectively doubling their unrestricted gifts to GTRLC.

First grant awarded: **1992**

Value of grants awarded to-date:

\$5,122,500 (With 2 years remaining of the Carls Challenge)

We are grateful to every grantmaker supporting GTRLC’s work; 2014’s foundation partners are listed in this Annual Report.

FOUNDATIONS 101

In the United States, a “foundation” can be a charitable organization that directly operates charitable programs itself or one that makes grants to other nonprofit organizations. An example of an operating foundation would be the Make A Wish Foundation. An example of a grantmaking foundation would be The Bill and Melinda Gates Foundation. Some foundations are private foundations, funded by an individual, a family, or a corporation, and some are community foundations or other nonprofits that raise funds from the general public.

In 2011 the US was home to 81,777 foundations, with \$662 billion in assets and \$49 billion in giving, which amounted to 16% of all private giving in that year.

Percentage of
Foundation giving
by issue focus:

28%
HEALTH

20%
EDUCATION

14%
ARTS &
CULTURE

14%
HUMAN
SERVICES

9%
PUBLIC
AFFAIRS/
SOCIETY
BENEFIT

6%
ENVIRONMENT/
ANIMALS

In 2012, Michigan received about 2% of the number of grants awarded in the Environment sector, and about 1% of the grant dollars awarded in the Environment sector. Of the top 50 Environmental grant recipients in Michigan in 2012, 8 organizations were land conservancies, including GTRLC.

Can you double your support of GTRLC? Foundations, corporations, and other organizations offer programs to match their employees’ charitable contributions. In just the last few years, Conservancy donors have made gifts that were matched by the following organizations:

Aetna Foundation

American Express Gift Matching

Bank of America Matching Gifts

Benzie Sunrise Rotary Club

Charles Stewart Mott Foundation

Elk Rapids Rotary Club

GE Foundation

Halliburton Giving Choices

Harris Bank Foundation

IBM International Foundation

Illinois Tool Works Foundation

W.K. Kellogg Foundation

Kresge Foundation

Macy’s, Inc.

Microsoft Corporation Matching Gifts

Pfizer Foundation

Pioneer State Mutual Insurance Company

Skillman Foundation

Steelcase Foundation

Traverse City Noon Rotary Club



Matching gifts are a tremendous way to multiply the impact that your giving can achieve through GTRLC’s work,” says the Conservancy’s Director of Development, Anthony Rupard. “Please get in touch with us if you would like some help determining whether your gift is eligible for matching support from an organization with which you are affiliated.”



Many local, regional, national, and international employers and service clubs are pleased to match charitable gifts made by their employees, retirees, or members.

Our mission is to “protect natural, scenic and farm lands—and advance stewardship, now and for all future generations.” Pondering and planning what it will take to accomplish our mission “for all future generations” is one part of the exciting, and sometimes daunting, work of our committed Board of Directors who take their fiduciary oversight responsibilities very seriously.

For nearly a quarter century, the Grand Traverse Regional Land Conservancy has been supported by donors who value our mission and who care about our region’s future.

We share your passion for special places, for our unmatched shorelines and scenic vistas, we take seriously our obligation to protect our working farms and our water quality. We take action and make choices on how we can best use the resources we have been given to protect them and care for them in an exemplary manner.

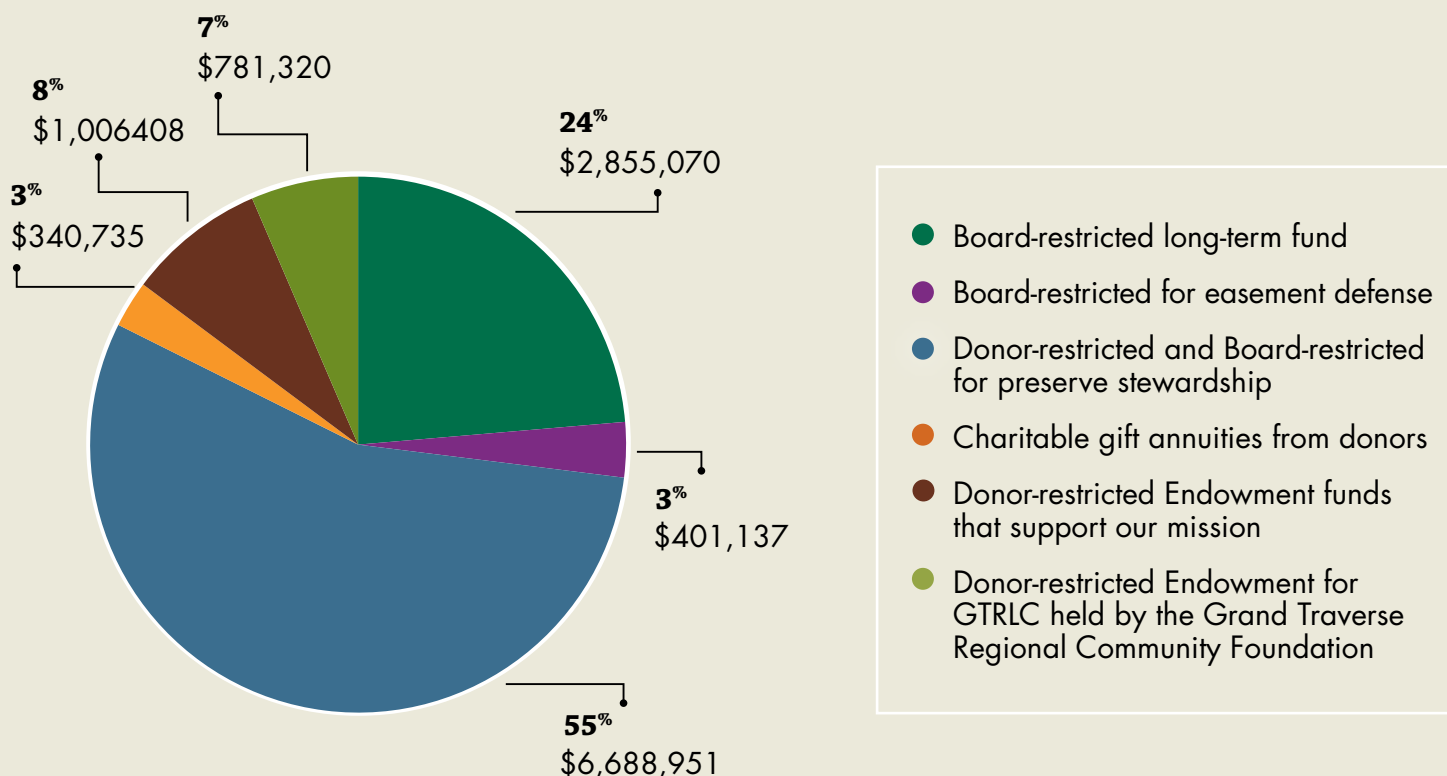
Thanks to the many forward-looking supporters who have made planned gifts or endowment gifts, GTRLC has invested over \$11 million in a variety of long-term funds to help us make good on our promise of “forever.” We are grateful for, and proud of, this achievement. And yet we know it is not enough given that we’ve protected nearly 40,000 acres of our most precious landscapes. Our work protecting critical land and water resources is ongoing. Our work ensuring that they are secure forever is not done. Our Board and staff are working diligently to determine the true investment that will be needed for the “forever” part of our mission. Stay tuned, as you’ll soon learn more about their discovery!

Your generous support has done so much for our region today, and your ongoing support will ensure that “all future generations” will enjoy these special places too. Thank you for your vision, your commitment, and your steadfast support of our mission.

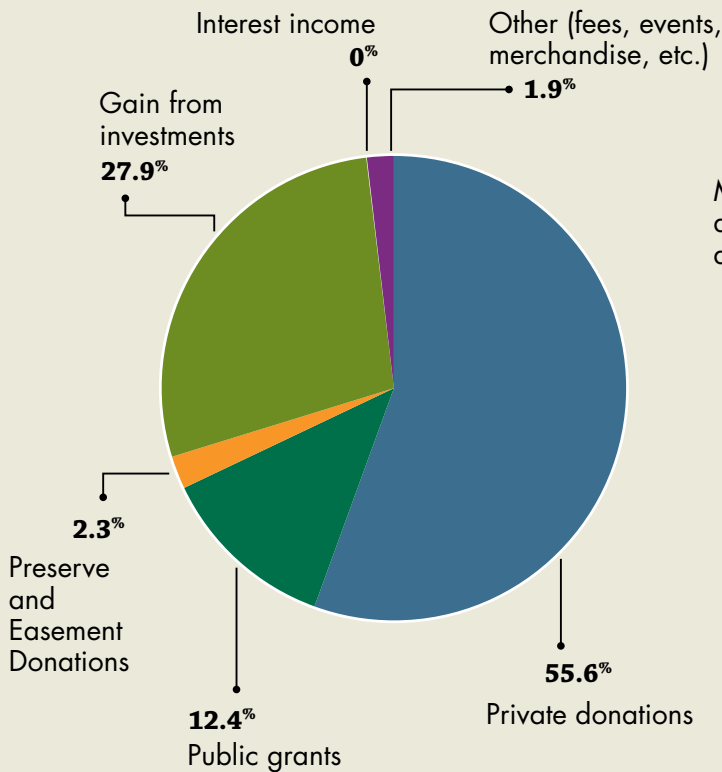
Glen Chown,
GTRLC Executive Director

GTRLC LONG-TERM & ENDOWMENT FUNDS

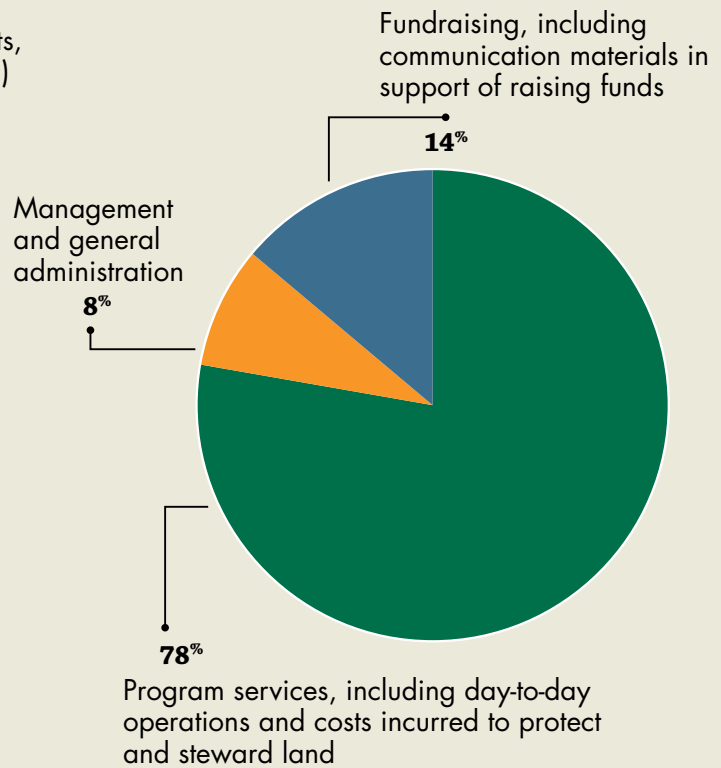
GTRLC holds over \$12 million in long-term and endowment funds. Some of the funds are donor-restricted and help support the ongoing stewardship of easements and preserves.



GTRLC REVENUES



GTRLC EXPENSES



GTRLC CONSOLIDATED STATEMENT OF ACTIVITIES FOR THE FISCAL YEAR ENDED JUNE 30, 2014

	UNRESTRICTED	TEMPORARILY UNRESTRICTED	PERMANENTLY UNRESTRICTED	TOTAL
REVENUE & SUPPORT				
Private Donations	\$ 1,270,227	\$ 2,253,983	\$ 1,100	\$ 3,525,421
Public Grants	115,292	670,413		785,705
Preserve and Easement Donations		145,504		145,504
Gain From Investments	742,271	1,025,757		1,768,028
Interest Income	2,776	101		2,877
Other (fees, events, merchandise, etc.)	11,130	107,007		118,137
Net Assets Released from Restriction:	2,830,989	(2,830,989)		
Liens Released on Nature Preserves		(123,006)	123,006	
Total Revenue & Support	4,972,796	1,248,770	124,106	6,345,672
EXPENSES				
Program Services, including day-to-day operations and costs incurred to protect and steward land	3,107,554			3,107,554
Management and General Administration	334,665			334,665
Fundraising, including communication materials in support of raising funds	554,234			554,234
Total Expenses	3,996,453			3,996,453
CHANGES IN NET ASSETS	976,343	1,248,770	124,106	2,349,219
NET ASSETS, Beginning of Year	4,133,346	12,255,740	17,769,676	34,158,762
NET ASSETS, End of Year	\$ 5,109,689	13,504,510	17,893,782	36,507,981

LAND PRESERVATION AND PROTECTION PROJECTS

The following donors made gifts and/or pledge payments to one or more of the projects and activities on the following pages between January 1 and December 31, 2014. **We extend our heartfelt gratitude for their support.**

TIMBERS RECREATION AREA

<i>Anonymous (1)</i>	<i>Gary & Suzanne Cork</i>	<i>Brooke Friesen</i>	<i>Sue Jennings</i>
<i>Jennifer Abel</i>	<i>Claire Cornish</i>	<i>Morton Gallagher</i>	<i>Keith & Claudette Johnson</i>
<i>Keith & Carol Adler</i>	<i>Crescent Shores Drive Association</i>	<i>Walter Gallagher & Helen Dowling</i>	<i>Barb Johnson Ellis & Kathy Simpson</i>
<i>Ron & Judith Albers</i>	<i>Harry Cribbs</i>	<i>Stanley & Mary Genslak</i>	<i>Leslie & Brad Jones</i>
<i>Tom Almer</i>	<i>Barbara Crumpton</i>	<i>Mark & Mary Beth Gentry</i>	<i>Paul & Betty Jones</i>
<i>Katie Asmus</i>	<i>Kate & Rick Dahlstrom</i>	<i>Tammy Gilbert</i>	<i>Allen & Cynthia Julian</i>
<i>Tom Auch</i>	<i>Daniel & Gail Dall'Olmo</i>	<i>Gilbert's Service Oil Company</i>	<i>Katie Scarlett Julian</i>
<i>Aultra Ventures</i>	<i>Dennis & Carol Davidson</i>	<i>Girl Scouts of Southeastern Michigan</i>	<i>Sarah Julian</i>
<i>Julie Bacon</i>	<i>Diane & William Davison</i>	<i>Sarah Gornicki Pancost</i>	<i>Nancy Julien Mitchell</i>
<i>Kimberly Balke & Brett Fessell</i>	<i>Christopher & Katherine DeGood</i>	<i>Grand Traverse Audubon Club</i>	<i>Jake & Suzanne Kaberle</i>
<i>Barking Waters Partnership</i>	<i>Richard & Connie Deneweth</i>	<i>Richard & Lois Gray</i>	<i>Dan & Pam Kaiser</i>
<i>Linda Barnhart</i>	<i>Alysha DeVries</i>	<i>Corey Grier</i>	<i>Marilyn Kamp</i>
<i>James & Amy Barron</i>	<i>Mary Doerr</i>	<i>Nancy & Richard Grote</i>	<i>Kristen Keilitz</i>
<i>Cindy & Gary Barta</i>	<i>Daniel Dorman</i>	<i>Laura Hahn</i>	<i>Timothy & Karen Keller</i>
<i>Melly Baxter</i>	<i>Karen Downing</i>	<i>Donald & Barbara Hakala</i>	<i>W.K. Kellogg Foundation</i>
<i>William & Luann Beach</i>	<i>Sue Downing-McVey</i>	<i>Sarah & Stephen Hall</i>	<i>David & Jean Kellom</i>
<i>Marilee Beckett</i>	<i>Daniel & Kristine Drake</i>	<i>Jeanne Halliday</i>	<i>Kerry & Kathy Kelly</i>
<i>Kay Beebe</i>	<i>Cindy & Lawrence Dubey</i>	<i>Holly Hall-Polopolos</i>	<i>Ron & Nancy Kennedy</i>
<i>Robert & Linda Beesley</i>	<i>Heather Dubey</i>	<i>Susan Heckendorn</i>	<i>Sharon & James Kerfoot</i>
<i>Eugene Berg</i>	<i>Shannon DuBey & Jennifer Schaffer</i>	<i>James Heethuis</i>	<i>Wendell Kevwitch</i>
<i>Tanya Berg</i>	<i>Tim Edman</i>	<i>Ronald & Sherryl Hellenga</i>	<i>Kevin & Ann Kitchin</i>
<i>Barbara Beyer</i>	<i>Debra & Daniel Edson</i>	<i>Elizabeth Hentges</i>	<i>Len & Connie Klein</i>
<i>Donald Blewett & Ann Wilson</i>	<i>George & Marilyn Edwards</i>	<i>Michael & Sharon Herron</i>	<i>Barbara Knight</i>
<i>Nena Bondarenko</i>	<i>Jeanne Ehinger</i>	<i>Bev Hertle</i>	<i>Barbara Knuth</i>
<i>John & Linda Bozzelli</i>	<i>Kathy & Don Ehrenberger</i>	<i>Mandy Hetfield</i>	<i>Kima Kraimer</i>
<i>Marilyn & Arthur Branco</i>	<i>Debra Eifler</i>	<i>Daniel & Susie Hintz</i>	<i>Ted Kraimer</i>
<i>Anne Brasie</i>	<i>Barry & Carole Eisfeldt</i>	<i>Shari & Mike Hintz</i>	<i>Walt Kraimer</i>
<i>Toni Brinker</i>	<i>Kate Ellison</i>	<i>Sharon & James Hobson</i>	<i>Joanne & John Kreag</i>
<i>Frederick & Lisa Brodeur</i>	<i>Alice Entwisle</i>	<i>Kathy & Bud Hockins</i>	<i>Michael & Diane Kuhn</i>
<i>David & Patricia Brogan</i>	<i>Diana Etmanczyk</i>	<i>Carol Hoffman</i>	<i>Pamela & David Lagattuta</i>
<i>Brookby Foundation</i>	<i>Roche & Leslie Featherstone</i>	<i>John & Florence Hoffmann</i>	<i>Lynn Larson & Paul Christ</i>
<i>Ted & Mary Brown</i>	<i>Lois Feichtenbiner</i>	<i>Daniel & Jody Hofstra</i>	<i>Ann Laurimore</i>
<i>Moirra Burns</i>	<i>Kendra Fershee</i>	<i>Richard Holcombe & Linda Hays</i>	<i>Ronald & Marcia Lautner</i>
<i>Laura & Steven Busch</i>	<i>Mary Jo Fifarek</i>	<i>Sharon Holz</i>	<i>Eleanor & Donald Layman</i>
<i>Steven Carey & Diane Dupuis</i>	<i>John & Sue Fink</i>	<i>Gary & Marilyn Hondorp</i>	<i>James & Sharon Leone</i>
<i>Allan & Nancy Carlson</i>	<i>Mary Fischer</i>	<i>Nancy & Allen Horstman</i>	<i>Amy Lesiewicz</i>
<i>Rosemary Carrico & Charlie Northrop</i>	<i>Ron & Mary Fitch</i>	<i>David & Sandra Howard</i>	<i>Dorothy & John Lewis</i>
<i>Glori Chartier</i>	<i>Gary & Carol Flickinger</i>	<i>Lynn & Michael Huffman</i>	<i>Scott Lint</i>
<i>Rebecca & Glen Chown</i>	<i>Forest Lodge Association</i>	<i>Kathy & Rich Huseltine</i>	<i>Barry & Linda Lishawa</i>
<i>Dotti Clune & Jill Henemyer</i>	<i>Bruce & Martha Fox</i>	<i>Bernard & Sharon Jackson</i>	<i>Heather Loney</i>
<i>Julie Clynes</i>	<i>Andrea Franz</i>	<i>Jennifer & Brian Jaffe</i>	<i>Long Lake Association, Inc.</i>
<i>Sandra Colburn</i>	<i>Cammie & Trent Freeman</i>	<i>Joseph & Dorothy Janick</i>	<i>Long Lake Foundation</i>
<i>Len & Janet Connolly</i>	<i>James & Madelyn Frick</i>	<i>Jennifer Jay & Evan Johnstone</i>	<i>Roger Looyenga</i>
			<i>Angie Lucas</i>

Phillip & Usha Lundberg	Oleson Foundation	Duane & Audrey Schmatz	Mary Trombley
Gail Lynch & Cathy Markland	Amelia & Amy Olson	Frank & Jan Schollett	Gordon & Kathryn Tulgestke
Randolph & Barbara Lyon	Thomas & Connie O'Rourke	Russell & Joanne Schopieray	Brenda Tuntland
Andrew & Deborah Mackersie	Jonathan Pawlak	Lindsay Selvig	Kim Turnbull
Julia MacMillan	Kate Pearson & Steve Cruzen	Gillian Shaw	Philip Van Hollebeke
Ma-Me-Ne-Sewong Garden Club	Nicole Pendley	Sarah Sheady	Therese & Thomas Waters
Kenneth & Jo Marks	Robert & Phyllis Petsch	Jennifer Shourd	John & Pauline Watt
David Marvin	Donna Pierson	Hugh & Bev Simmonds	Abby Wattenberg & Vicki Compton
Gordon & Mary Ann Masura	Howard & Jean Poe	Thomas & Maura Slack	Dave & Janice Webster
Matt & Ann McDonough	Linda Pohly	Donna Sloan	Charles & Ann Weitz
Meghan & Sean McEvoy	Nancy & Carl Pohly	Patricia Smith	Donna Weitz & Bill Smith
Robert & Julie McKay	Deb & Mark Posthumus	Frank & Ellen Snyder	Bob & Jane Weldon
Jennifer McKerver	Terry & Anita Pratt	Donald & Colleen Soenen	Karen & J.D. Wells
Laurie & Scott McNamara	Jessica Priem	Kay Solsbury	Jeff & Jennie Wentzloff
Fiona McPherson Grant	Larry & Alva Priest	Henry & Susan Somero	Roger & Mary Westover
Paul & Mary Meernik	Derk Pronger	Herbert Souder	Stephen & Susanne Weygandt
Anita Mennel	Karen Pugmire	Dave & Barb Spinniken	Beverly & James Wheaton
Thomas Menzel	Carol Rabanus	Laura & Gregory Stasiak	Gregory & Karen White
Mode's Bum Steer	David Ready	Liz Stefanics	Jason & Kristin Whitten
Douglas & Mary Sue Mohnke	Dawn Reha	Edward & Mavis Steinle	Dennis & Karen Wiand
Gregory & Barb Mort	Joanne Reiter	Jo Stevens	Christina Wilfling
Anthony & Beth Mulac	Michelle & Nate Reynolds	Larry & Ila Stowe	Sue Wilson
Josh & Sarah Myaard	Nate Richardson	Barbara Strong	Walter & Patricia Wisdom
Ronald & Tina Neihardt	Amanda Ridge	Margaret Strong	James & Gera Witte
Becky Nelson	Karen & Darrel Robinson	Patricia Tabbert	Gordon Wolters
Roger & Stephanie Nelson	Rebecca Roethlisberger	Steven & Janie Tavener	J.A. Woollam Foundation
Marilyn & Michael Niebel	Karen & Bill Rosa	Kathleen Thelen	Birgit Yetter & Keith Conway
John & Judith Nisbett	Lisa Rossell-Riccobono	Carolyn & Clif Thompson	Arthur Yuncker
Ken & Marilyn Nowak	Steve & Judith Rouse	Fremont Thompson & Shannon Flanigan	Colleen Yuncker
Anne Obelnicki	Stacie Rowan	John & Joy Tobin	Alex & Maggie Zakem
Mary Obelnicki & Craig Silverstein	Janet & Scott Ruggles	Ronald Todd	Emily Zakem
Theresa O'Brien	Joe & Pug Rundio	Corey Treadway & Sarah Bancroft-Treadway	Stephen Zavodny & Judy McEvoy
Megan & Andrew Olds	AJ Sanor		
	Joel Saper		

GRANTS FROM STATE AND FEDERAL GOVERNMENTS AND OTHER PARTNER ORGANIZATIONS:

The Conservancy is either a direct recipient or sub-awardee of grant funding from the following state and federal programs and partner organizations.

Grand Traverse Regional Community Foundation

Land Trust Alliance

Michigan Coastal Zone Management Program, Office of the Great Lakes, the Department of Environmental Quality, & the National Oceanic & Atmospheric Administration

Michigan State University

National Fish & Wildlife Foundation, Sustain our Great Lakes, administered by Ducks Unlimited, Inc.

National Fish & Wildlife Foundation, Sustain our Great Lakes, administered by the Nature Conservancy

Natural Resources Conservation Service

State of Michigan Department of Environmental Quality, Nonpoint Source Program

United States Environmental Protection Agency, Great Lakes Restoration Initiative

United States Fish & Wildlife Service, Great Lakes Fish & Wildlife Restoration Act

United States Fish & Wildlife Service, North American Wetland Conservation Act Grant

United States Fish & Wildlife Service, Partners for Fish & Wildlife

ARCADIA EXPLORE THE SHORES: Includes all gifts and pledge payments to Arcadia Marsh, the Universally Accessible trail at Arcadia Dunes, and Arcadia Beach

Tripp & Chia Huei Amdur
 Andrew & Eunice Barbera
 Liza Barnard & Jim Ryan
 Bill & Kathy Beck
 Dennis & Marilyn Benson
 Lois Breimeier
 Michael & Sandra Buhrt
 Kathleen Campbell
 Erin Cantwell
 Cathy, Doug, & Erynn Carter
 Joyce Delamarter
 Wendy & John Dillworth
 Robert & Donna Dinkmeyer
 Paula & Bryce Dreeszen
 Mary Engdahl

Tom & Linda Farrell
 Mary Ferens
 Alan Flory & Monica Schultz
 Clifford & Norma Fox
 Doug & Terri Gast
 Thomas Gast & Sue Leason
 Joanne & Donald Gatz
 Andy Haas
 Lois Haertel
 Hamp Family Fund
 Linda & Craig Hanson
 Barry Hibben
 John & Wilma Hultman
 Gerald Jehle
 Blair & Gordon Jones

Karen Kamerschen
 Shirley & the Reverend
 Oscar Kraft
 Steven Kraft & Carol Burns
 Jackie & Bob Kunnen
 Frederick & Jeannie Lauppe
 Dency Lippert
 Matthew Lohrentz
 Dr. James Low & Louise
 Anderson-Low
 Sally & Patrick Manke
 Robert & Nancy Marshall
 Peggy Martin
 Greg & Colleen Maryanski
 Monte & Nina Mayes

John & Nancy Meade
 Melba Panhorst
 William & Kathleen Parsons
 Patricia Power
 Kevin & Lisa Russell
 Seabury Foundation
 Steve & Mary Storms
 William & Cheryl Sullivan
 Dori Turner
 Sue & Norm Ulbrich
 M. Sue Waltz
 Tom & Shannon Westgate
 Pam Yee & Ron Gianola

OLD MOORINGS

Anonymous (1)
 American Proficiency
 Institute, Inc.
 Casey Cowell
 John DiLorenzo
 Douglas Gage & Cheryl Sisk
 Lee & Candy Gardner
 Vincent Johnson

David & Paula Kelley
 Russ & Leslie Knopp
 Gregory & Susan Lyman
 John & Sue Paul
 John & Theresa Pelizzari



RAILROAD POINT NATURAL AREA

Walter Johnson
 Mary Jane Meier

**COASTAL DUNE
 PROTECTION**

Thomas & Suzanne Scott



**BOWERS HARBOR
 PARK ADDITION**

Brian & Robin Dailey
 Jeremy Gibson & Carolyn
 McDonald
 Newton Eye Care Center
 Monnie Peters
 Terrie Taylor & John Robert
 Williams

OLD MISSION PENINSULA LAND PROTECTION

J. G. Marc Bertrand
 Century 21 Northland
 Peter & Anne Magoun
 Kirk Marckwald &
 Chris Desser
 Mariel Foundation
 Dorothy Morrison &
 Barry Brown

Kathy Polk Osborne
 Ralph L. & Winifred E. Polk
 Foundation
 Susan Scyphers
 Shaw & Betty Walker
 Foundation



**PYATT LAKE
 STEWARDSHIP**

Stephen & Jacqueline Baase
 Gary & Carol Tasch
 William & Karen Tasch



ACME BAYSIDE PARK

Charlene Abernethy & Mike Gill

John & Sue Bolde

Paul & Amanda Brink

Edward & Ingrid Brophy

James & Danielle Bruckbauer

Barbara Cochrane

George Comden

Robert & Kathleen Garvey

Kathleen & Mark Guy

Joe & Marie Haezebrouck

Michael & Jean Johns

Gordon & Veronica LaPointe

F. R. & Gloria Lehman

G. Patrick & M. Judy Nerbonne

Michael & Linda Norris

Dennis & Mary Penney

Dawn Pysarchik

*Rotary Charities of
Traverse City*

Robert & Grace Rudd

*Art & Mary Schmuckal
Family Fund*

J. Terry & Barbara Stein

Gail Trill & Linda Wikle

Frank & Faye Zimmerman

MAPLE BAY FARM

Elizabeth Hoffmann

Gary & Jane Stauffer

SKEGEMOG WILDLIFE AREA

Mr. & Mrs. Milton Abelow

*Grand Traverse Regional
Community Foundation*

Allen Janis

Timothy & Kimberly Narhi

Opper's Quilt Group

Judy Zawislak

TRAIL BUILDING AND MAINTENANCE



William Baguley

John & Phyllis Brewster

Roger & Helen Dewey

*Erin Fanning &
Keith Radwanski*

Larry & Lauren Prentice

FALENDER FAMILY ENDOWED FUND

James & Fran Falender



STEWARDSHIP

Charles & Penelope Curry

Alice & Jerry Deck

Alan & Lenore Hutchenreuther

Katherine & Keith Lindstrand

Jim & Loraine Mottern

Kenneth Pickering

Andrew Topper



PRESERVE STEWARDSHIP ENDOWMENT

*Charles & Linda Kehr
Robert & Nancy Marshall*



DOLE FAMILY FOUNDATION CHAIN OF LAKES WATERSHED FUND

Dole Family Foundation



LAND ACQUISITION FUND

*Carls Foundation
John J. Helstrom
Memorial Fund
Owen & Ellen Love Family
Farmland Preservation Fund
of American Farmland Trust*

*Rotary Charities of
Traverse City
Barclay Shultz
J.A. Woollam Foundation*



GLACIAL HILLS PATHWAY AND NATURAL AREA

*Edward & Jeanine Bottrell
Council of Michigan Foundations
Nancy & Jim Cox
Bob & Pam Currey
Larry & Eileen Dittmar
Herrington-Fitch Family
Foundation
Jim & Diana Huckle Family
Foundation
Fred Jernigan
Norman & Judith Jones
Kevin & Sue Malone
Terence & Sally Malone*

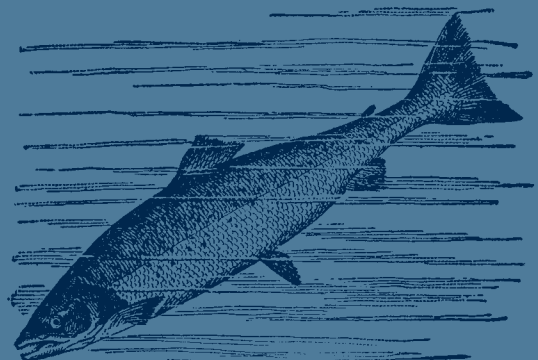
*Robert & Susan McLean
Curtis & Wendy Myers
Jennifer Pavlat
Pioneer State Mutual
Insurance Company
Daniel & Donna Sagady
Serendipity Endowment at the
Community Foundation
Short's Brewing Company
Dori Turner
Barb Van Pelt & Dave Varga
Chris & Ashlea Walter*



PHOTO BY NATE RICHARDSON



PHOTO BY NATE RICHARDSON



PRIVATE LAND PROTECTION

While the parks and nature preserves we protect are open to and enjoyed by the public, 18,369 acres of the land which we have permanently protected are private properties whose owners have generously granted conservation easements. We monitor these properties annually, often hand-in-hand with the land owners, to answer questions, and to ensure that conservation values—the health and wealth of these precious lands—are maintained forever. **We extend our heartfelt gratitude to the following land owners for their support.**

Acme Township	Cedar River Group, LLC	Gene Gerring & Lois Szumera	‡ Deceased
Robert & Meredith Amon	Central Michigan Inns Inc.	Judy Gienow	
Antrim County	Marshall Champion	Ron & Diane Gillison	Janice Lessard
Vernon‡ & Claudia Bailey	Cherry Ridge Farms	Stephen & Margery Goodale‡	Joe & Kathy Lessard
Baillio Company	City of Traverse City	James & Sharon Goodheart	Karyl R. Lessard ‡
Andy & Eunice Barbera	Richard Cooper & Jan Tennant	Charles & Bethany Goodman	Long Lake Township
Mark & Karen Barbera	Terry & Gretchen Cox	Grand Traverse Commons	Calvin Lutz
Robert & Gail Barnes	Croft LLC	Great Lakes Fishery Trust	T. Grace Macdonald
Bash Enterprises	Crystal Highlands Orchards Inc	Estate of Anthony Grybok	Helen MacMillan
Thomas & Ardis Bauer	Alice & Jerry Deck	GT Commons	Kimberly Mampe
Bay Harbor III LLC	G. Michael & Barbara DeGraeve	Redevelopment Corp	Robert & Lois Manigold
Bayshore Real Estate Associates #1	Woody & Katie Derrohn	Donald M. & Heidi L. Hamilton	Francia Mann
Leon & Shirley Beal	Michael & Teckla Dettmer	Beverly‡ & Thomas Hanna	Clarissa Price Marckwald
Bill & Marti Beals	Dave Edel	Jack Harris‡	Dirk & Mary Martin
Kathleen & Otto Belovich	Development Engineering	Alan & Carol Hart	William & Joan McCool
Robert & Barbara Below	Charles DeYoung	John & Charlene Heim	McGuire Real Estate Company LLC
Benzie County Government Center	Harold & Edna DeYoung	Jed & Dawn Hemming	William F. McKinley
Fred J. Beveridge	Nancy Dickinson	David & Barbara Henton	Amy & Dan Meyer
John R. Blakeslee	J. Bennett & Tauna Donaldson	Russell & Carolyn Herschler	Jean J. Meyer
Mrs. Rhoda Bolton‡	Jeanette M. Dowd	Jane D. Highsaw	Philip & Connie Micklin
Rudrick & Mary Ellen Boucher	Dorothy D. Dunlap‡	Frances Housman	Kelly & Debra Miller
Joan T. Brace	Martin Easling	Donald & Jane Hutchinson	Philip E. Miner Revocable Trust
Lois Brennan & James Dalley	Roger A. Easling	Russell & Kay L. Hughes	Mary-Slade Morrison
Brenda Brooks	Marion‡ & Arthur Eberhardt	Warren Ilchman	Sladie Morrison
Judy Grace Wilkerson Brooks	Phil Edwards & Laura Reid	Alice A. Jeffers	Brownson & Betty Jean Murray
Edward & Ingrid Brophy	Susan Edwards‡	David & Nancy Jones	Joel R. Myler
Richmond & Lee Brown	Susan & Edward Elmendorf	Stephen & Karen Jones	NANSUCA Inc.
James & Justine Buck	Frank J. O. Elliott	Patrick & Christine Kelley	Neahtawanta Resort Association
Dan & Nancy W. Capps	Jeanette Shambaugh Elliott	Ellen C. Kelso	Michael & Kathleen Niedzielski
Pat Capps	Bethany Engle	Marie J. Kladzyk	Philip J. Norrish
Stephen & Karen Capps	Kenneth & Janet Engle	Jane Klotzbach ‡	Winston A. Norrish
Wanda Capps	Evans Bros. Fruit Co.	Anthony Kramer & Barbara Bailey	John D. O'Hair
Carey Trust	Harry Fisher‡	Douglas Kramer‡	Leobardo & Carmelita Ocanas
Archibald Carey	Julius Fisher‡	Naomi Kroupa	OCS Watervale Ltd.
Archibald Carey III	Marilyn G. Fisher‡	Robert & Geraldine Krumwiede	OHK-SEK
David & Nancy Carey	Robert & Pam Flewelling	John & Mary Lane	Peter Ohrnberger
John Carey	Chip & Terrie Frey	Bruce & Joanne Langlois	Brad & Katie Oleson
Marlene & Terry Caszatt	Michilu Gargiulo & David Wild	Gary & Larry Lathwell	DJ & Lisa Oleson
Vernette Cauchy	G.D.O. Investments	Frank & Carol Leonard	The Oleson Foundation
	John R. Gehring‡		

<i>Shirley J. Petrie Trust</i>	<i>Nancy Seasholes</i>	<i>Terry & Constance Timm</i>	<i>Gloria Whelan</i>
<i>Denis & Martha Pierce</i>	<i>Lois Serra†</i>	<i>Ralph & Phyllis Turner ‡</i>	<i>Larry & Nancy Wilson</i>
<i>Brian Price</i>	<i>Shaffer Family Partnership</i>	<i>Andrew M. Vander Molen Foundation</i>	<i>John & Charlotte Wuepper</i>
<i>Charlotte Putney</i>	<i>George & Roberta Shambaugh</i>	<i>Mary ‡ & Andrew Villov</i>	<i>Shelby Ziegler</i>
<i>Putney Real Estate Holdings LLC</i>	<i>George & Jaqui Shambaugh</i>	<i>Roy & Pamela Volkening</i>	<i>Zientek Trust*</i>
<i>Marvin & Jodi Radtke</i>	<i>George Shambaugh Jr.</i>	<i>Frank F. Vyverberg</i>	
<i>Julian Rammelkamp ‡</i>	<i>Mr. Gary Shanker</i>	<i>Randall Vyverberg</i>	
<i>Theodore & Trudi Rammelkamp</i>	<i>Michael & Shanna Shea</i>	<i>Melinda Wagner</i>	
<i>Ranke Family Partnership</i>	<i>Steve & Carol Shuckra</i>	<i>Brent & Norma Walton</i>	
<i>Ray Ravary & Mary Carlton</i>	<i>Wayne & Jennifer Simmons</i>	<i>Gary & Carolyn Waterson</i>	
<i>Frank & Doris Rawlings</i>	<i>Gregg & Dee Smith</i>	<i>The Inn at Watervale Inc</i>	
<i>RF Reiley Family Partners, LTD</i>	<i>Spindrift Inc.</i>		
<i>Rick & Kay Rieck</i>	<i>Reg Sprik</i>		
<i>Marty & Debra Ross</i>	<i>William & Patty Springstead</i>		
<i>Rotary Camps & Services of Traverse City</i>	<i>Eileen G. Sproule</i>		
<i>Wayne & Joan Rowe</i>	<i>James & Kristin Steckley</i>		
<i>Ralph & Patricia Rugan</i>	<i>David Steffey</i>		
<i>Bob Russell ‡ & Sally Van Vleck</i>	<i>Donald & Betty Stone</i>		
<i>John & Margaret Sargent</i>	<i>The Taft Family</i>		
	<i>Kingsley & Gillien Taft</i>		



* Indicates new conservation easement.

People who purchased existing conservation easements between January 1, 2014 and December 31, 2014.

Lance & Allyson Docken
Logan Lockman
Ryan Lockman
Scott Nugent
Nicklaus Slocum
Greg White
Isaiah Wunsch

LAND CHAMPIONS

Land Champions commit to monthly gifts that support the very foundation of our mission. By supplying a steady and reliable source of income to fund the day-to-day work of the Conservancy, Land Champions allow us to plan and sustain our work more effectively. We are grateful for their commitment and generosity.

<i>Joan Abbott</i>	<i>Karen Garber & John DesMarais</i>	<i>Richard & Marilyn Mumaw</i>	<i>John & Lynn Steben</i>
<i>Joe & Kathryn Anderson</i>	<i>Mark & Mary Beth Gentry</i>	<i>Megan & Andrew Olds</i>	<i>Jo Stevens</i>
<i>Robert & Nancy Baglan</i>	<i>Jeremy Gibson & Carolyn McDonald</i>	<i>Kate Pearson & Steve Cruzen</i>	<i>Chris & Ali Sullivan</i>
<i>Marcia Bellinger & Irv Stoner</i>	<i>Mark Gilmore</i>	<i>Steve Perdue, Grand Traverse Industries</i>	<i>Ward & Francoise Swingle</i>
<i>Warren & Barbara Berthelsen</i>	<i>Jack & Ruth Harris</i>	<i>Mary Pratt</i>	<i>Terrie Taylor & John Robert Williams</i>
<i>Nathan & Audra Bildeaux</i>	<i>Dr. Kristina Hindert & the Honorable Ronald Nehring</i>	<i>Heather Rinkel</i>	<i>Howard & Dianne Walker</i>
<i>Rosaleen & Richard Borton</i>	<i>John Hood & Irene Brown</i>	<i>Sally Rodgers</i>	<i>Erin & Ben Whiting</i>
<i>Anne Brasie</i>	<i>David & Christine Jaymes</i>	<i>Kristen Roell</i>	<i>Diane Wilbur</i>
<i>Jo Bullis</i>	<i>Donald & Barbara King</i>	<i>John & Suzette Sanborn</i>	<i>Nathan Winkler</i>
<i>Rebecca & Glen Chown</i>	<i>Jean & Walt Kretzmann</i>	<i>Joan Sheard & Myrna Yeakle</i>	<i>Wendy Wolfe & Paul Wawrzynek</i>
<i>Norman & Laura Christopher</i>	<i>Gregory & Audrey Landsfeld</i>	<i>Steve & Carol Shuckra</i>	<i>Jesse & Molly Wolff</i>
<i>Julie Clynes</i>	<i>Josephine Marquis & Joseph Fraser</i>	<i>Jeff & Judy Spencer</i>	<i>Birgit Yetter & Keith Conway</i>
<i>Joseph & Leslie Cook</i>	<i>Jane McKune</i>		
<i>Robert & Karin Cooney</i>	<i>Rita Melotti & Andrew Bishop</i>		
<i>Thomas Crampton</i>	<i>Judith Mich</i>		
<i>Tom & Diane Emling</i>	<i>Anne Mudgett & Scott Furgueson</i>		
<i>Chad & Monica Evans</i>			
<i>David Foley & Margaret Willman</i>			
<i>George & Mary Ford</i>			
<i>Stephen & Susan Fry</i>			

If you would like to learn more about how you can become a Land Champion, contact Marissa Garrock at 231-929-7911.

VANGUARD SOCIETY

By making plans to benefit the Conservancy with future gifts—accomplished through estates, trusts, annuities, insurance policies, beneficiary designations, and other planned giving options—Vanguard Society members will continue to make a difference for land conservation far into the future, helping to ensure that the places we save today will be protected and cared for, forever.

Anonymous (5)
 Martha Aemisegger ‡
 Hal & Kathryn Armstrong
 Marjorie E. Arney ‡
 Christine Arvidson &
 Henry Doss
 Robert & Nancy Baglan
 George & Merry Ball
 Daniel P. Baumhardt
 Thomas Beauvais
 Naomi Borwell ‡
 Kathleen Carpenter
 Ruth W. Catton
 Glen & Rebecca Chown
 Bob & Cindy Clement
 Sara Cockrell
 Jane R. Comings
 Bonnie Craig & Dan Sylvester
 Karen & Ronald Culp
 Marcia & Ted Curran
 Robert & Arlene Dean
 Jock & Sue Denio
 Michael & Barbara Dennos ‡
 Alice J. Detzler
 Betsy & Stan Dole
 Diane L. Dupuis
 David & Linda Egeler
 Arthur Elliott ‡
 Rich & Susan Erwin
 Lois Goldstein & John Heiam
 Tom Greensmith
 Anthony Grybok ‡
 Jessica A. Hatch
 Victor C. Hayes ‡
 Mr. & Mrs. John R. Hicks
 Tom & Myrna Hitchman
 Anne M. Hoffa
 William A. Hyslop
 Harry & June Janis
 Jerry & Pat ‡ Jehle
 Walter H. Johnson
 Joyce Keillor ‡

The Rev. Dr. Kathleen L. Kircher
 Wayne & Ruthanne Kladder
 Oscar H. Kraft ‡
 Kima M. Kraimer
 Edith Krause ‡
 Robert Charles & Patricia
 Cosner Kubic
 Richard ‡ & Marlene Loughmiller
 Wendy MacGaw
 Rosemary Malocsay
 Kent ‡ & Barbara Manning
 Josephine "Jody" Marquis
 Bob & Nancy Marshall
 Diane McDonald
 Christie McGue & Robert Calt
 Donald McIntyre, Jr. ‡
 Dick ‡ & Shirley McNally
 Harriet Miller-Brown &
 Keith Miller
 Robert & Joyce Mims
 Elizabeth S. Mitchell ‡
 John & Nancy Morrison
 Ruth Luse Myers ‡
 Ray & Paula Nichols
 Elaine Oeflein ‡
 Julie Pearson
 Kate Pearson
 Robert W. & Ann H. Pike
 Mary J. Pitcher
 Eula Pray ‡
 Dan Remahl
 Patricia D. Robinson ‡
 Tom Robinson ‡
 Elizabeth B. Rodgers
 Edward & Elyse Rogers
 John Ross
 Gregory D. Seman
 Chris & Michele Shafer
 George E. Shambaugh, Jr. ‡
 Colette M. Stanish
 D.W. & Joyce Stibbs
 Ann & Allen Taylor

Terrie E. Taylor, D. O.
 Herbert H. Tedder ‡
 William & Mary Todt
 Andrew M. Vander Molen ‡
 Dana Vannoy
 Suzanne J. Voltz
 Phil & Barb Von Voigtlander
 Ralph A. & Margaret von
 Walhausen

Lorenzo E. & Beverly F. Wagner ‡
 M. Sue Waltz
 Anne W. Warren
 Gloria Whelan
 John Wunsch
 Birgit Yetter
 Ron & Marty Yocum



‡ Deceased

*"Making a charitable bequest to the Grand Traverse
 Regional Land Conservancy provides for our children
 and grandchildren by strengthening their communities
 and passing on our most heartfelt values."*

—John & Nancy Morrison



PHOTO BY NATE RICHARDSON

Donald & Dolores Abbott

Lyle & Nancy Wilson

Joe (Otter) Alonso

Shari & Mike Hintz

Mary Obelnicki &

Craig Silverstein

Christina Wilfling

Rob Alschbach

Betsy Easterwood

William "Rick" Andrew

Gary Andrew

Bob Carris

William Fried

Henry & Sara Parks

Jean Bensley

Ron & Nancy Kennedy

Edith Blackhurst

Gayle & Stephen Stewart

David Bortel

John & Wilma Hultman

Lola (Granny) Branham

Patricia Tabbert

William R. Brashear

Anita Goor

Ken Breimeier

Betty Miller

Merrie Brennan

Bernard & Donna Lavas

John Buxton

Susanne Buxton

Jack Callahan

Patrick & Carol Conway

Lois (Clip) Clippard

Patricia Tabbert

Charmon M. Cribbs

Harry Cribbs

Christopher Davidson

William & Christine Toole

Richard A. Davidson

Betsy Easterwood

Gene Denman

Shirley Denman

Nancy DeWeese

Donna & Jerry Klinefelter

Bob Doerr

Jason & Suzanne Allen

Lydia & George Armistead

Richard & Nancy Christiansen

Margo & Larry Copley

Lois Feichtenbiner

Ed & Sharon Fox

Mel & Betty Giles

Hemming Family

Mark & Diana

KehrbergKenneth & Jo Marks

Michigan Dental Association

Niemi Family

Karen & Bill Rosa

Allan & Marjorie Siefert

John & Linda Townsend

Joann (Sak) Downing

Karen Downing

Sue Downing-McVey

Patricia Smith

Patricia Tabbert

Walter & Mary Drake

Charles & Penelope Curry

Wally Edwards

Dan & Carol Campbell

Elisabeth Case & Douglass North

Roger & Helen Dewey

Mark Edwards

Kathy Grappin Gish

Greg & Jennifer Johnstone

Margaret & Timothy Tewson

Dori Turner

Mary Jordan Ehlert

Janet DiMarco & Family

Ted Ehlert

Marguerite (Ness) Elliott

Patricia Tabbert

Erma, a dedicated companion

Linda & Craig Hanson

Zac Fochtman

Jane Fochtman

The Reverend

Dr. Richard Gotsch

Heidi Garrahy

Arthur Greenlee

Barbara Bennett

Nancy & Ron Bourgeois

Anna Marie Butrie

Victor & Delores De Rose

Vera Dominick

Margo Gerber

Arthur & Susan Greenlee

Dot Hinsch

Diane Kecskes

Claire Kreher

Nancy & Dennis Nadeau

Lori Strager

Vashti Thomas

James Young

Ann Guldberg

Tom Guldberg

Wells Hall

The Clark Family

Gerry Harsch

Sallie Gardner

Lloyd Hendry

Patricia Hendry

Patti Henke

Cameron Henke

James L. Highsaw

Bruce & Rhoda Bush

Carol Highsaw

James Highsaw

Jane Highsaw

Linda Prentice

Florence & Louis Honhart

Anne Honhart & Jean Smith

Patricia Jehle

Gerald Jehle

Robert & Nancy Marshall

Katherine Simmonds

Dori Turner

Dr. Jim Johanson

Dori Turner

Bruce Jones

Blair & Gordon Jones

Grace Joppich

Bernadette & Gary Bowker

Jane Brown

Peg Dunn

Virginia Fiegel

Keith & Jean Gaede

Kathleen & Mark Guy

Debra Heiden

Dean Keiser

Robert & Susan King

Clare Kurz & Charles Pryde

Brian & Barbara MacInnis

Arlene O'Brien & Jean Livingston

Jack & Mary Pat Randall

Joyce Rombouts

Robert & Grace Rudd

Pat & Lyn Salathiel

June Thaden

Gary Thompson

Gary & Beverly VanRaalte

Raymond L. Joppich

Bernadette & Gary Bowker

Chris Kaley

Molly Jarema

Lee Keating

John & Wilma Hultman

Howard & Marilyn Kessel

Robert & Joyce Mims

Robert F. King

Stephen & Jacqueline Baase

Marjorie Elois Kladder

Paul & Amanda Brink

Linda Koeber & Michael Vickery

Robert & Marellene Morrell

Milton Knabusch

Janet Taylor

Inge Kraimer

Crescent Shores Drive

Association

Jeanne Ehinger

Walter Kraimer

Herb Souder

Souder & Wilson Families

Margaret S. Lacy

David & Martha Frank

Alice Long

Mary Pitcher

Barbara (Loonie) Lundy

Patricia Smith

Patricia Tabbert

John "Jack" Malstrom

Verna Auxier Stallone &

Mr. & Mrs. George Auxier

Dan Denawetz

Thomas & Gail Duke

John & Jo Kreag

Judy Owen

Katherine & Gary Twomey

Lynelle Marolf

Lois DeBacker

Nan McCabe

Dori Turner

Sadie McEvoy

Meghan & Sean McEvoy

Mickey Mike

Lois Feichtenbiner

Betty Mitchell

Suzanne Voltz

Marge Monroe

John & Wilma Hultman

Rosalie Morrison

Bud & Joyce Mims & sons,

Michael & John

Denton Nelson

Michele Nelson

Michael A. Oleszczuk, Sr.

Nena & Don Bondarenko

Dorothy Ott

Ted Ehlert

Ellen & Mason Palmer

Sandra Zilincik

John & Dory Paul

John & Sue Paul

Gordon & Cease Peschke

Alan & Lenore Hutchenreuther

Jerry Power*Patricia Power***Elmer J. & Genie Rabanus***Carol Rabanus***Audrey Ragland***Dianne & Howard Richter***Ed & Mabel Richardson***Jon Richardson***Zora Richardson***Jan Leuallen***Howard & Lucille Riopelle***Constance Riopelle***Alexander****& Patricia Robinson***David & Joanne Frantz***Patricia D. Robinson***Alexander C. Robinson***Tom Robinson***Thomas Crampton &**Timothy Norkus-Crampton***Janyce Westcott Sagaser***Donald Sagaser***Kurt Schoepfle***Bill & Louise Kurtz***Patricia "Trish" Snowdon***Amy Anderson & Tracy Drier**The East Porch Group**at Watervale**Will Heelan**Dori Turner***Leroy Stephens***Edward & Anita Berk**Michelle & Robert**Holschuh Simmons***Mitch Stevenson***Julie & Michael Dreyer**Thomas Goblish**Nathan Keysor**Steven & Mary Kin**Kimberly Larrow**Steve Tebo***Judy Stewart***Anita Mennel***Dorothy Stiegemeier***Lois Breimeier***Charles G. Stone***Beatrice Stone***Dottie Stulen***Forest Lodge Association,**Laura Busch***Bill & Jean Sweet***Ron & Nancy Kennedy***Elaine Szatkowski***Barb & Gregory Mort***Louanne Tasch***William & Karen Tasch***Erna Thirt***Lois Feichtenbiner***Ian Paul Ulen***Gene Ulen***Karen Vanderkleed***John & Wilma Hultman***Cozette Varg***Robert & Arlene Dean***Jack Vliet***Chase Robison & Amber Eads***Doris Waggoner***Mr. & Mrs. Milton Abelow**Timothy & Kimberly Narhi**Opper's Quilt Group**Judy Zawislak***Milt Weller***Donna & Jerry Klinefelter***Joyce & Fred Wells***Shirley & the Reverend**Oscar Kraft***Marilyn Werner***James & Gera Witte***Charles & Ruby Weyrick***Nancy & Richard Grote***Byrnece White***John & Karen Boals**Joan & Wally Bruder**Kay Cupp**Charles & Barbara Daniels**Douglas & Bonnie Dean**Duane & Norma Johnson**Connie & Thomas Kiessel**Linda & Cliff Kinery**Mr. & Mrs. James King**Vernon & Tina Lalone**Sherry Lark**Don & Ginny Oleson**Glenn, Sandra, Tom &**Karen Paradis***Henry Zeinstra***Ralph & Katherine Crew**Eleanor Gorman &**Jeanne Marshall***HONORARIUMS****January 1 - Dec 31, 2014** Gifts were made in the honor of the names shown in bold.**Joe Alonso***Mandy Hetfield***Ed Andres***Kristi Messing***Andrea (Raggedy)****Beckett***Marilee Beckett***Marion E. Beebe***Kay Beebe***Lois Breimeier***Carol Breimeier***Nancy Brickman***Reese Family Foundation***Sylvia Brown***Karen Pugmire***Jarrah (J) Buch***Mary Fischer***Helen Campbell***Carolyn Campbell***Fiona Carey****& Miles Carey***Steven Carey &**Diane Dupuis***Laura Cavender***Coldwell Banker Schmidt,**Realtors (Mark Hagan)***Glen Chown***Kay Charter***Rob & Diane Collier***Bruce & Joyce Rogers***Robert & Allyn Kay****Cornwell***Nancy & Kent Walton***James Dalley***Emily Anderson***Jody Dotson***Donna Weitz & Bill Smith***Barb Ellis***Kathy Simpson***Nanette (Stormy)****Enloe***Gail Lynch &**Cathy Markland**Patricia Smith***Fairwinds Staff****2000-2008***Dawn Reha***Carl Fry***Erin Fry***Fred & Kathy Gasper***David & Carole Ingell***Sara (Pez) Gibson***Christina Wilfling***Corey (Kile) Grier***Anita Mennel***Donald & Sally****Grishaw's****60th wedding****anniversary***Terrie Taylor & John**Robert Williams***Curtiss & Katie****Gulash***Coldwell Banker Schmidt,**Realtors (Mark Hagan)***Ron Gurdak***Barbara Cochrane***Diana Hammond***Coldwell Banker Schmidt,**Realtors (Mark**Nadolski)***Shari Hintz***Keith & Carol Adler**Julie Clynes***Kathy Hockins***Ron & Judith Albers**Daniel & Gail Dall'Olmo**Dennis & Carol Davidson**Kathy & Don Ehrenberger**Michael & Sharon Herron**Bud Hockins**Nancy & Allen Horstman**Walter Krammer**Scott Lint**Roger & Stephanie**Nelson**Donna Pierson**Jo & Pug Rundio**Bob & Jane Weldon**Dennis & Karen Wiand***Rex & Jill Holden***Howard & Elizabeth Dole***Sarah, John &****Laura Horvath***Erica Gardner***Harry & June Janis***Allen Janis***Gerald Jehle***Janet Jehle***Ed & Margaret Jones***Joe & Marie Haezebrouck***Katie (Kaki) Kimmet***Gail Lynch & Cathy**Markland***Henry Oscar Kraft***Shirley & the Reverend**Oscar Kraft***Murphy Kohl***Betty Kohl***Karen (KG) LaBranche***Gail Lynch & Cathy**Markland***Renee M. Lisabeth***Coldwell Banker Schmidt,**Realtors**(Mark Nadolski)***Gail (Windy) Lynch***Cathy Markland**Patricia Smith***Joe Magliochetti***Kathy Magliochetti*

Cathy (Sparkie) Markland <i>Gail Lynch</i>	Michael & Nancy Nerbonne <i>G. Patrick & M. Judy Nerbonne</i>	Nelson & Martha Rodes <i>John & Julie Rodes</i>	The Storms Family <i>Steve & Mary Storms</i>	James Waldron <i>May & Paul Waldron</i>
Bob Marshall <i>Ryan & Kelly Fisher Christine Goebel Robert Marshall</i>	Nathan Norman <i>Coldwell Banker Schmidt, Realtors (William Habich)</i>	Lyndon & Patricia Salathiel <i>Jeanne Salathiel</i>	Patricia (Petey) Tabbert <i>Gail Lynch & Cathy Markland Howard & Jean Poe Patricia Smith</i>	Watervale Inn <i>Steve & Mary Storms</i>
John & Anne Martin <i>Porter & Sherrie Martin</i>	Mary Obelnicki <i>Anne Obelnicki</i>	Matt & Katie Schlomer <i>Coldwell Banker Schmidt, Realtors (Mark Hagan)</i>	Gary & Carol Tasch <i>William & Karen Tasch</i>	Dr. Paul & Kathy Weiner <i>Jeanne Townsend</i>
Kay Martin <i>Porter & Sherrie Martin</i>	Don & Gerry Oleson <i>Rebecca & Glen Chown</i>	Irene Scott <i>Chris Scott</i>	Rick Tasch <i>William & Karen Tasch</i>	Donna Weitz & Bill O. Smith's engagement <i>Kate Pearson & Steve Cruzen Charles & Ann Weitz</i>
Paul & Sharon Martin <i>Porter & Sherrie Martin</i>	Amy Olson <i>Amelia Olson</i>	Jody Scott <i>Hugh & Bev Simmonds</i>	Dr. Terrie Taylor <i>Lou Anna & Roy Simon</i>	Judy & Frank Wilhelme <i>James Jackson</i>
Matt McDonough <i>Steven Carey & Diane Dupuis Megan & Andy Olds</i>	Sue Osmer <i>Deb & Mark Posthumus</i>	Lindsay Selvig <i>Gillian Shaw</i>	Renee L. Thon Trust <i>Coldwell Banker Schmidt, Realtors (Raymond Wall)</i>	Avery Wise <i>Thomas Zieziul & Natalie Killingstad</i>
Jennifer McKervery <i>Keith & Carol Adler</i>	Katie, Bill & Chris Parker <i>Lydia & George Armistead</i>	Mr. Send <i>Coldwell Banker Schmidt, Realtors (William Habich)</i>	Ron & Cynthia Tschudy <i>Stephen Phillips</i>	Gavin Wise <i>Thomas Zieziul & Natalie Killingstad</i>
Cindy McMellen <i>Edward & Ingrid Brophy Joanne Folsom</i>	Tom Phelps <i>Coldwell Banker Schmidt, Realtors (Mark Hagan)</i>	AJ Siegmann <i>James & LaRayne Siegmann</i>	Jeromie Turlok <i>Coldwell Banker Schmidt, Realtors (William Habich)</i>	Joan Wolfe <i>Gerald Brusher & Elizabeth Wolfe-Brusher</i>
Nancy & Phillip Meek <i>Kathy & Tom Lehner Brian & Lori Meek</i>	Margaret (Mugs) Platner <i>Gail Lynch & Cathy Markland</i>	Jason Siegmann <i>James & LaRayne Siegmann</i>	Dori Turner <i>John & Nancy Meade</i>	Sue (Broecker) Wood <i>Anita Mennel</i>
Harriet Miller-Brown's birthday <i>Emilia Rennie</i>	Linda & Sharon Pohly <i>Nancy & Carl Pohly</i>	Beverly Simmonds <i>Hugh Simmonds</i>	Norman Ueno <i>Marilyn Ueno & Douglas Zernow</i>	Marion (Rusty) Wright <i>Gail Lynch & Cathy Markland</i>
Florence & Elliot Morrison <i>Dorothy & Barry Morrison</i>	Michelle (Shelby) Reynolds <i>Keith & Carol Adler Gary & Carol Flickinger</i>	Kaye Sirotti & Richard Blake <i>Molly Resnik & John Martin</i>	Todd Vigland <i>Suzy Voltz</i>	Emily Zakem <i>Alex & Maggie Zakem</i>
Arthur J. & Doris E. Nerbonne <i>G. Patrick & M. Judy Nerbonne</i>	Lisa Riccobono <i>Keith & Carol Adler</i>	Ethan & Jaime Smith <i>Coldwell Banker Schmidt, Realtors (William Habich)</i>	Suzy Voltz <i>John & Lynn Vinkemulder</i>	

2014 IN-KIND GIFTS

We are deeply grateful to the following supporters for their contributions:

Ken Barber – *Plowing services*
Crystal Lake Adventure Sports – *BOGO bike rental passes*
Daniela's Delectables – *Discounted 200 3-oz bags of granola*
Marissa Garrock – *Couch for reception area*
Golf Cars Plus – *Portion of golf-cart rental*
Hoxsie's Farm Market – *200 corn-maze passes*
Monsma Marketing Corp – *Jenweld 6 panel steel door*
The River Traverse City – *Passes for bike, kayak, or SUP rental*
Alden Outfitters – *Passes for ½ off kayak rental*

Thank You!



2014 GIFTS OF TIME AND TALENT

We are deeply grateful to the following volunteers, who help us in every way to accomplish our work:

Joanie Abbott	Joanne Dawson	Lloyd Gubert	Kathleen Kircher	Phillip Meek	Jane Stauffer
Lynn Adams	Joyce Delamarter	Tracey Gubert	Janet Koch	Steve Middaugh	Joan Steinfort
Perry Adams	Matt Drake	Kathleen Guy	Jon Koch	Edward Moehle	Vern Steinfort
Nancy Baglan	Bryce Dreeszen	Mary Haley	Romain LaLone	Joe Nerone	Sally Stilwill
Emily Baker	Paula Dreeszen	Michael Haley	Audrey Landsfeld	Michele Nerone	Nancy Story
Gerald Batka	Carrie Duff	Dick Hanson	Gregory Landsfeld	Marilyn Niebel	Angela Strong
Katherine Batka	Russ Duff	Jack Harris	Gordon LaPointe	Michael Niebel	Clete Swanson
Sherri Baughman	Andrew Dyke	David Hauser	Craig Leppien	Roger Norkoli	Mary Swift
Tom Baughman	Debra Eifler	Margaret Hauser	Rob Lewis	Carla Olds	Rudolf Syvko
Rebecca Beach	Janet Engle	Barbara Heflin	Marilyn Ligi	LuAnn Orbeck	Al Taylor
Jo Anne Beemon	Kenneth Engle	Robert Heflin	Tony Ligi	Gail Parry	Terrie Taylor
Jean Bedell	Gerri Erickson	John Heiam	Linda Lishawa	Bruce Peabody	Cynthia Tschudy
Norm Bell	John Ester	Penny Hergenroeder	Mike Lubert	Karen Peabody	Ron Tschudy
Lenore Berlin	Laura Evans	Gary Hicks	Gib Lucas	Margaret Platner	Judy Twigg
Kenneth Blakey-Shell	Tom Evans	Mike Hintz	Ben Lundquist	Heide-Marie Post	Diane VanderVeen
	Kathy Flynn Mach	Shari Hintz	Sally Lundquist	Royce Ragland	Susan Van Duine
Paul Brink	Linda Forster	Greg Hodge	Mike Lynch	Karen Richardson	Cathy Walle
Tony Brolick	Martha Fox	Elizabeth Hoffmann	Dave Lyon	Carolynn Ritter	Richard Walle
Kristen Bullock	Judd Fuller	Cherie Hogan	Constance Macek	Daniel Roketenetz	M. Sue Waltz
Jesse Burt	Carl Freeman	Robert Holmes	Dan Macek	Grace Rudd	Flint Watt
Betsy Calcutt	Jim Galloway	Ed Hoogterp	Andy Mach	Robert Rudd	Shannon Westgate
Cathy Carter	Kim Galloway	Jim Huckle	Dan Mach	Kevin Russell	Keith Westphal
Jeff Caviston	Elsa Gambert	Cindy Hull	Dan Malec	Paul Schulert	Dottie Willruth
Eric Chatterson	George Gambert	Ken Ikier	Sally Manke	Linda Scribner	Gera Witte
Kathleen Chimko	Thomas Gast	Pam Ikier	Joseph Mariage	Deanna Seifried	James Witte
Lou Ann Churchill	Craig Goble	Jim Jaeger	Norma Mariage	George Seifried	Charlene Wylie
Dale Claudepierre	Sharon Goble	Mark Jaeger	George Marsh	Gregory Seman	David Wylie
Virginia Claudepierre	Lois Goldstein	Regina Jaeger	Nancy Marshall	Susan Sheldon	Thomas Yocum
Lucinda Clement	Marcia Graham	Jennifer Jaffe	Robert Marshall	Harold Shirey	
Robert Clement	Ross Graham	Larry Johnson	Dave Mathews	Kimberly Simpson	
Sally Cook	Donnel Grahl	Brad Jones	John McCormick	Michael Sipkoski	
Michele Counsell	Michael Grahl	Rosalie Karunas	Christie McGue	Sharon Sleeper	
Dean Crandall	Michael Gravlin	Charles Kehr	Ryan McKenna	Evan Smith	
Marcia Curran	Carole Groves	Greg Kindig	Alison McMaster	Gretchen Staub	
Cortney Danbrook	Linda Grubaugh	Don Kingery	John Meade	Don Stauffer	
Eugene Dawson			Nancy Meek	Gary Stauffer	



THE CONSERVANCY FUND

The following donors made gifts and/or pledge payments to **The Conservancy Fund** between January 1 and December 31, 2014. Your gifts to this unrestricted fund allows us to build a steady, reliable income to meet our day-to-day financial needs and keep our organization strong and our programs thriving. **Please note:** Pledge commitments made, but not yet received, are acknowledged in the year or years when payments are made.

We could not be more grateful for your generous support.

GIFTS OF \$25,000 OR MORE

Carls Foundation
Elizabeth G. &
Stanley F. Dole
Leonard C. Goodman
Grand Traverse Regional
Community Foundation
T. Grace Macdonald
Robert & Joyce Mims
Ken & Susan Morrison
Charles Stewart Mott
Foundation
James & Debbie Norling
Oleson Foundation

GIFTS OF \$10,000 – \$24,999

Anonymous (2)
Tripp & Chia Huei Amdur
Harold S. Hansen &
Naomi H. Bodenshtab
Foundation
Gloria & Leith Butler
Dick & Carol Crout
Kresge Foundation
Kathy Magliochetti
Mahogany Foundation
Peggy Martin
Thomas & Deborah McMullen
Phillip & Nancy Meek

Royce Ragland & Kenneth
Bloem
David E. Reese Family
Foundation
Donald & Glenna
Southwell
Robert & Pauline Young



GIFTS OF \$5,000 – \$9,999

Steven & Kathryn
Bandstra Foundation
Beers Family Foundation
Paul & Amanda Brink
Cherry Republic
John & Lynn Collins
Brian & Robin Dailey
Michael & Rhea Dow
Susan & Edward Elmendorf
Steven & Sheila Hamp
Barry Hibben
Mariel Foundation

Josephine Marquis &
Joseph Fraser
John & Sue Paul
David & Ellen Petrick
Pierce Family
Charitable Foundation
David & Sara Taft
Trust for Public Land
Andrew M. Vander Molen
Foundation

GIFTS OF \$2,500 – \$4,999

Dick & Sue Bingham
Dan & Lisa Brickman
Elizabeth Case &
Douglass North
David & Claudia Fry
Jim & Diana Huckle
Iceman Promotions, Inc.
Charles & Linda Kehr
Jeanie & Murray Kilgour
Kirk Marckwald &
Chris Desser
Robert Martin
Dan & Pamela Prevo
Foundation
Donna & Richard Sayler
Kathy & Rolf Stadheim
Diane & John VanderVeen
Ron & Marty Yocum

GIFTS OF \$1,000 – \$2,499

Robert & Nancy Baglan
Mack & Lorraine Beers
Brian Blood
Norton & Mary Lee Bretz
Ruth Starke Burkhead
William R. Burleigh
Family Foundation
Harry & Betsy Calcutt
Jonathan & Erin Campbell
Robert Carstens
William & Edith Christoph
Community Foundation
for the National
Capital Region
Joseph & Leslie Cook
Marcia & Ted Curran
Shirley Denman
James & Janet DiMarco
J. Bennett & Tauna
Donaldson

Kenneth & Janet Engle
Rich & Susan Erwin
Martha Garber
James & Lauri Gartner
Robert & Kathleen Garvey
Kevin & Sharron Gay
Jeremy Gibson &
Carolyn McDonald
Drew Gores & George
Warrington
Edward Graft
Ward & Margaret Griffen
Nick & Susan Hansen
Jane Hardwicke
Liz Hardy & Tom Kienbaum
Jack & Ruth Harris
Will Heelan
John Heiam & Lois Goldstein
Sharon Hillquist
Tom & Myrna Hitchman

Michael & Marsha Howard
Jennifer & Brian Jaffe
Gregg & Sue Johnson
June 8th Foundation
Elizabeth & David
Karczewski
Katie & Chuck King
Wayne & Ruthanne Kladder
Bruce & Libby Krone
Penny & Jamie Ladd
Kathy & Tom Lehner
James & Kirsten Levinsohn
Leslie Li & Brian Ahlborn
Don & Lou Anne Lindemann
Ed & Nancy Lyon
Gregory & Lissa Magel
Robert & Nancy Marshall
Ann McPhail
McWilliams/Piraino
Family Foundation

Brian & Lori Meek
Dave Murphy & Sue Peters
Stephen & Sarah Nault
Shirley & Jerry Niemi
Thomas & Victoria Palmer
Cynthia & Scott Paradise
Dick & Ellie Paulsen
Karl Pearson
Monnie Peters
Ed & Patty Petrick
Robert & Ann Pike
Pirate's Cove Adventure Golf
Gary Pomeroy
Anne & Joseph Purpura
Kevin & Lisa Russell
Diana Schmiedicke
Nancy Seasholes
Gregory Seman
Patricia Sharpnack

Lou Anna & Roy Simon
 Michael & Suzette Simpson
 David & Lynn Starkey
 Mary & William Swift
 Terrie Taylor &
 John Robert Williams
 Pam Theisen & Nancy
 Schlichting
 Paul & Nancy Tousley
 Mary Alice & Robert
 Treadway
 Suzanne Voltz
 Kathy & Paul Weiner
 Gloria Whelan
 Janet Wolf



PHOTO BY NATE RICHARDSON

GIFTS OF \$500 – \$999

Barbara Jean Ames & Paula Robey	Michael Dively	Dr. Kristina Hindert & the Honorable Ronald Nehring	Dennis & Judy Murphy	Albert & Evi Sickinger
Carl & Betsy Anderson	Diane & James Dixon	Robert & Jane Holdeman	Mary & Paul Neustadt	Charles Silver
Larry & Sharon Andringa	Howard & Elizabeth Dole	William & Myrna Holland	Chris Nickerson	Matthew & Denise Smith
Deena Barshney	Hank Dow	John Hood & Irene Brown	Stephen & Ann Norman	Jeff & Judy Spencer
James Bergman & Penelope Hommel	Matt & Dana Drake	T. Michael & Joan Jackson	Otwell Mawby, PC.	John Spencer
Maryellen & Robert Bieder	Lois Eaton	Paul & Laura Jacobson	Moore Peregrine	Charles & Judy Stuart
Ross & Brenda Biederman	EJ USA	Kenneth & Elizabeth James	Mary Pitcher	Mike & Terry Tarnow
Steve & Margaret Blouw	Ted Ehler	Janet Jehle	Ed & June Prein	Ann & Al Taylor
Boccia Family Foundation	Tom & Linda Farrell	Mark & Diana Kehrberg	Jane Purkis	Emily Todd
Nena Bondarenko	Lois Feichtenbiner	Phyllis Kidd	Jeffrey Puryear & Myriam Waiser	Jeanne Townsend
Catherine Bosher & Jose Perez-Sanz	DeAnne & Todd Frank	Donald & Barbara King	Lynn & June Rayle	Traverse Magazine
Bernadette & Gary Bowker	Leonard & Karen Franseen	Joyce Kirshner & Frances Wyatt	Polly Rea	Thomas & Kathleen Volle
Elaine Bridges	Norman & Mary Anne Frey	Jean & Walt Kretzmann	Dan Remahl	Suzanne Voltz
Joe & Elise Brooks	Michilu Gargiulo & David Wild	Vernon & Tina Lalone	Edward & Elyse Rogers	Melinda Wagner
Robert Buckner	GE Foundation	Gregory & Audrey Landsfeld	Robert & Grace Rudd	Nancy & Kent Walton
Karolina Carls	Bruce & Valerie Gerhart	Harold & Pamela Lassers	Jo & Pug Rundio	James & Margueritte Way
William & Sandy Cartwright	Jim & Lucy Gerlach	Philip & Judy Leege	Gretel Rutledge	Brian Weisman
Donald Chown	Thom Greene & Nadeen Kieren	Jan Leuallen	Helen Sanabria	Pamela Wenzel
Rob & Diane Collier	Kathleen & Mark Guy	Terence & Sally Malone	John & Gail Schneider	George Wickstrom
Patrick & Carol Conway	John & Penny Haddick	Jon & Mary Ann March	Paul & Barbara Schwartz	Avace & Bruce Wildie
William & Paula Cordes	Barry & Evelyn Harper	Thomas & Shirley McLenithan	Serendipity Endowment at the Community Foundation	Wildlife & Wetland Solutions
Lois DeBacker	Philip S. Harper Foundation	Sue & Steve Meholic	Benjamin & Adele Shambaugh	Windward Partnership
David Dickinson & Jeannine LaPrad	Dave Harrison	Margaret Moran	John & Victoria Sheagren	Don & Sally Wiper
Preston & Mary Dilts	Louise & Larry Haskett	Stephen & Diana Morgan	Susan & David Sheldon	Karla & Stan Woell
	Bill & Kirty Heald			Dennis & Jan Wyckoff



DONORS OF \$1 – \$499

Anonymous (4)	Lois & Larry Bahr	Jean Bell & Catherine Mullin	Gilbert & Anne Bogley	Larry & Connie Brown
Joan Abbott	Randall Baidas & William Reeves	Jeffrey & Kathleen Bell	Eric & Lou Ann Bohman	Robert L. Brown
Jennifer Abel	Carole Bailey & Cal Wilcox	Norman Bell & Gail Parry	Joseph Boner	Robert S. Brown
Abelow Family Foundation	Carroll & Sandra Bair	Bell Title Lakeshore	Michael Bonnell	Cindy Browne
Ross & Emily Abrahamson	David & Kate Bair	Marcia Bellinger & Irv Stoner	Gene & Linda Booher	Eleanor Brownell
Jay & Shirley Adams	Walter & Marilyn Baird	John Bellingham	Donna Boris	Daniel & Dawn Bruce
Thomas & Susan Adamson	Julie Baker	Carl & Sally Benner	Rosaleen & Richard Borton	Joan & Wallace Bruder
Aetna Foundation	Nick & Shirley Baker	Barbara Bennett	Kenneth & Jennifer Bosma	Richard & Carolyn Brunelle
Kirk & Cathy Agerson	Robert Baker	Eric & Anita Bennett	Nancy & Ron Bourgeois	Liz & Peter Bruning
Bernadette & Peter Albers	Tom & Lori Baker	Richard & Maria Bensel	Scott & Diana Boven	Gerald Brusher & Elizabeth Wolfe Brusher
Kimberly Albright & Michael Dow	Dianne Baker-Hale & Calvin Baker	Roger & Kathy Benson	John Bowers	Herb & Dee Bucholtz
Alfie Embroidery Inc.	Mark Baleja	Debra Benton	Bowers Harbor North Beach Association	Jim & Kitty Buck
Catherine Alfred	John Balmer & Roz Jaffe	Steven & Constance Benz	Bowers Harbor Vineyard & Winery	Marilyn & Jack Budrow
Jason & Suzanne Allen	Jim & Prudy Barber	Rosemary Berardi	Gloria & Jerry Boyd	Jo Bullis
Dan & Jane Allensworth	Andrew & Eunice Barbera	Kit Berger	Jeanne Boyd	Marilyn Burfiend
Tom Almer	Douglas Bard	Ralph & Lynda Bergsma	BP Fabric of America Fund	Carol Burger
Terry Almquist	Rachel & Gentry Barden	Edward & Anita Berk	Curtis & Donna Braden	David & Linda Burkey
James Alstrom	William Bardens	Mark Berley	Thomas & Cynthia Bradley	Peter & Lyne Burkey
Amazon Smile Foundation	Marjorie & David Barlow	Lenore Berlin	Marjorie Braem	Doug & Susan Burns
Nicoline Ambrose	Liza Barnard & Sean Ryan	Helen & Lewis Bernath	Marilyn & Arthur Branco	Eunice Burns
Al Ammons	Burton & Lenora Barnes	Marjorie Berndt	Anne Brasie	John & Susan Burns
Mark & Kris Ammons	Peter & Karen Barnes	Arleta Bernson	Dr. Daniel & Jeri Lynn Braunlin	Jill Burnside
Jim & Roberta Amstadt	Robert & Anna Barron	Barb & David Bersuder	Charles & Ester Breed	Bruce & Rhoda Bush
Amy Anderson & Tracy Drier	Jeannette & Dennis Bartlett	Warren & Barbara Berthelsen	Carol Breimeier	Faith Bushnell
Bernard & Lorraine Anderson	Martha Barton	J. G. Marc Bertrand	Lois Breimeier	Eric & Kelly Buth
Carol Anderson	Harriet Batson-Benson	W. Dean & Carol Bigelow	Joyce & Robert Brenner	Linda Butka & Bryan Olshove
Chris & Diane Anderson	Joan Bauer & Doug Langham	Nathan & Audra Bildeaux	Susan Breuer	Anna Marie Butrie
Emily Anderson	Bill & Gail Baughman	Don & Bonnie Bills	Barbara Brewer	Edward & Leslie Butt
Joe & Kathryn Anderson	Keith Baum	Ron & Stacey Bing	Bob & Nancy Brick	Susanne Buxton
Richard & Linda Anderson	Ross & Shirley Baylis	Michael & Mindy Binsfeld	Tim Brick	Mary & Bruce Byl
Sallee & Thomas Anderson	Anthony & Susan Baynard	Keith & Ethel Birchler	Charles & Pamela Brickey	Robert & Sue Cain
William & Paula Anderson	Holly & Dan Beachum	William & Ilene Birge	Bruce & Marilyn Bridges	Harvey & Kathryn Calcutt
Gary Andrew	Walter & Elaine Beardslee	Richard & Terrie Birndorf	Harry & Terri Brink	Evan & Virginia Calkins
Barry & D. Karen Andrews	Bill & Kathy Beck	Beverly & Robert Blair	Ronald & Patricia Britt	Michael & Nancy Call
Bob & Molly Appleford	Anton Becker	Scott & Suzette Blair	Jim & Candy Brody	Cary & Mary Campagna
Lydia & George Armistead	Nancy & Timothy Beeler	Mary Blanchard	David & Patricia Brogan	Bruce & Linda Campbell
Paul & Judy Arnold	Ernie & Mary Behnke	Peter & Eleanor Blitzer	Tony & Beth Brolick	Carolyn Campbell
Richard & Janice Arnold	Marilyn Behrendt	Carolyn & Richard Block	Pepper Bromelmeier & Thomas Brown	Dan & Carol Campbell
Deanna Arntson	The Reverend Ted Beiderwieden	Roger & Carla Bloom	Gary & Beverly Brouwer	Donald & J. Elaine Campbell
John & Nancy Ashton	Robert & Carol Beidler	Tim & Cheryl Bloomquist	Edward Brown	Douglas Campbell & Sandy Robey
Randy & Peg Asmus	Robert & Nancy Beine	Richard J. & Carolyn M. Blum Foundation	Esther Brown	Edwin Campbell
Chuck & Lilo Atkinson	Priscilla Belden	Brad Boals	Frederic & Carolyn Brown	Paul & Carole Campbell
Fred & Jean Auch		John & Karen Boals	Jane Brown	Robert & Ruth Campbell
Bruce & Susan Auten				Thomas & Dianne Campbell
Anna & John Bachman				Ellie Canfield



PHOTO BY GARY L. HOWE

Thomas Capua	Richard & Nancy Christiansen	Marcey Conn & Myrna Kimosh	David & Nancy Daugherty	Joe & Marilyn Dressel
David Card			Tim & Laurie Daum	Julie & Michael Dreyer
Gerald & Nancy Card	Norman & Laura Christopher	Douglas & Sally Cook	Robert Davidson	Edward & Barbara Driese
Steven Carey & Diane Dupuis	Lou Ann & Robert Churchill	Robert & Karin Cooney	David Davis	Richard Druffel & Catherine Nally-Druffel
Paul & Jean Carlson	Jody & E. Terry Clark	James & Darlene Cooper	Michael & Dixie Davis	Dale & Anna Ducommun
Amy Carmien	Pete & Shari Clason	James S. Cooper	Douglas & Bonnie Dean	Raymond & Nancy Duede
Margaret Carmody	Dale & Virginia Claudepierre	Margo & Larry Copley	Robert & Arlene Dean	Steve & Betsy Duede
David & Marcia Carney	Robert & Lucinda Clement	Don Corning	Sharon Dean	Sue & Tad Duemler
Bob Carris	Robert & Susan Cline	Steven & Mary Cortese	Ann & Richard DeBoer	Thomas & Gail Duke
Brad & Beth Carrington	Donald & Nancy Clover	Michele Counsell	Joan Dedo	Arthur Dundon
William Carroll	Timothy & Mary Clulo	David & Glenys Cowperthwaite	Maureen Delaney-Lehman	Cheryl & Bill Dundon
Neil & Mary Carter	Julie Clynes	Kenneth & Cynthia Cox	Elsa Della Torre	Duane Dunlap & Nancy Hulka
James & Holly Cartwright	Daniele Cobb	Nancy & Jim Cox	Dan Denawetz	Roger & Angelica Dunlap
Harold & Marsha Case	Max & Reatha Cochran	Thomas Crampton	John & Suzanne Denio	Don Dunlop
Sally Casey	Don & Marylou Coe	Charles & Susan Crawford	David & Nancy Denison	Judy Dunmire & Mark Plamp
Felix Casillas	Robert & Debra Coffey	Michael & Sue Creager	Karen Denolf & K.T. Hayes	Peg Dunn
Scott Cassel	Richard & Janice Coggeshall	Ralph & Katherine Crew	Bill & Sandy Derman	Frank & Shirley Durham
Fred & Michelle Cepela	Coldwell Banker Schmidt, Realtors	Tom & Judy Croxton	Victor & Delores De Rose	Theresa & David Dysarz
Mary Chalker	Henry & Bonnie Cole	Crystallaire Camp/ Camp Lookout	Kent & Victoria Des Jardins	Jeanine Easterday
Michael & Elizabeth Chamberlin	Robert & Susan Cole	Jeffrey Cunard	Mary Lou DeTar	Betsy Easterwood
Diane & Everett Chambers	William & Joanne Cole	Kathy Cunningham	Doug & Margo Detzler	Arthur Eberhardt
William Champion	Dan & Shirley Coleman	Kay Cupp	Larry & Ann DeVergilio	Carol & Fred Edmonds
Jan Chapman	Clare Coles	Janice & Jed Curtis	Roger & Helen Dewey	Jeanne Edwards
Richard & Shirley Chapman	Cynthia Collins	Diane Dabich	Harold & Edna DeYoung	Mark Edwards
Kay Charter	Edward & Barbara Collins	George & Pat Daisy	Stephany Diana	Ronald & Michelle Edwards
Alice Chema	Jo Collins	Lois Brennan & James Dalley	William & Roberta Dickie	Mary Lou Egan & Marc Bendick
Michael & Susan Chesney	Peg & Tom Comfort	Lucia Danes	Nancy Dickinson	Donald & Sally Eichberger
Fred & Carol Chidester	Eleanor Comings	Charles & Barbara Daniels	Nelson Diebel	Jack Elder
K. Ross & Helen Childs	James & Dorothy Compere	Stacy & Carol Daniels	Kevin Diels & Jane Damschroder	Elk Rapids Garden Club
Rebecca & Glen Chown	Jane Conard	Peter & Carol Danly	Eleanor Diesing	Charles Ellinwood
Kay Christian	Janet & Robert Condon	James Daoust	Carole & Richard Dills	David & Sally Elliott
			Jane Dinkmeyer	Marjorie Elliott
			Sue & Tom Dionne	Eric & Diana Ellis
			Robert & Barbara Disse	Dorothea & Bill El-Yasir
			Kelly Dissette	Ed & Ann Emenheiser
			William & Linda Dolinski	James & Mary Emerson
			John & Sharon Dolton	Tom & Diane Emling
			Vera Dominick	Kevin Empson
			Jean Donaldson	Endoman Promotions, LLC
			Jill Dooley & Annette Brown	Alice Entwisle
			Ron & Carol Dooley	Environmental Sustainability Solutions
			Ray & Linda Dornbusch	William & Michelle Eppel
			Dick & Guyla Doumanian	Gerri Erickson & Margaret Platner
			Lester & Natalie Dragstedt	
			Claudia & Ken Drake	
			Eric & Kathy Dreier	
			Ann Dressel	

Bill & Gail Ericson	Donald & Sandra Franck	David & Cheryl Garvin	Bruce & Erica Greer	Michael & Mary Haley
Raymond Erlandson	David & Martha Frank	John & Grace Gast	Family Foundation	John & Genevieve Hall
Jason Erlenbeck	Linda Frank & Klaus	Arnold & Eleanor Gatzke	Christopher & Marlene	David & Judith Halsted
Jeanne Esch	Lehrer	Douglas & Shirley Gembis	Griffin	Anne Hamilton &
John & Char Ester	Charles & Lora Frankel	Mark & Mary Beth Gentry	Nancy & Pat Griffin	Susan Gillen
Chad & Monica Evans	Joanne Frantz	Margo Gerber	David & Laura Groenke	Diana Hammond
William & Pamela Evans	Don & Nancy Fraser	Roger Gerstle & Marjie Rich	Marjorie & Richard	Edward & Jeanne Hammond
Frank Even	Charles & Julie Frayer	Irene & Alex Gherlan	Groenwald	Nancy Hammond &
Denyse Everett	Alta & Rob Frears	James Gibson	Michael & Anne Groleau	Tim Wolf
Ted Ewald	Ellen Fred	James & Nancy Gibson	Cheryl Gross & Gary	Don & Meg Haney
Carol & Roger Faber	Richard & Margaret	David & Helene Gidley	Richardson	Gerry Hansen
Charles Fahlgren &	Frederick	James & Lisa Gies	Bruce Grossman & Susan	Joanne Hansen
Kay Harley	GINNY & Carl Freeman	Mel & Betty Giles	Prescott	Lyle Hansen
Judith Farley	Marjorie French	Michael Gillman	Helen Grove & Theodore	Marilyn & Dick Hanson
Jan Faulkner	Joy French Becker	Benjamin & Susan Gilmore	Wagenaar	Donald & Barbara Harmer
Gary & Elizabeth Fazzio	Suzanne Freshour	Joe & Lois Gilmore	Linda Grubaugh	Phil & Mary Harmeson
Gregory & Nancy Fazzoni	David & Esther Frey	Mark Gilmore	Tom Guldberg	Robert & Carol Harmon
Brian & Crystal Feeney	James & Madelyn Frick	Dean & Sharon Ginther	Ronald Gurdak	Mark & Cathy Harrell
David Feenstra	William Fried	William Gittlen &	Lionel & Carol Guregian	Kirk & Liz Harrington
James & Creda Feller	Gordon Friese & Mary Anne	Sarah Campbell	Ann & Harold Gurian	Edward Harris
Margaret Ferguson	Rivers-Friese	Robert Glassman	Werner & Marianne	Harris Bank Foundation
Ferguson & Chamberlain	George & Maiga Friess	Robert & Paula Glise	Gutknecht	Sharon Harris Fox
Associates	Friess Family Cottage	Sarah Glupker	Jan & Dave Gwinnell	Brent & Letha Harshman
John & Joan Ferrari	Joan & Charles Froman	Thomas Goblish	Barbara & Eugene Haak	Cornelia Hart
Virginia Fiegel	William & Nancy Fronk	Mary Joan & James Godfroy	Joe & Marie Haezebrouck	Joanne & John Hartmann
Charles & Mary Fierle	William & Mary Frost	Christine Goebel	Paul & Betsy Hagelberg	Donald & Clara Hasenick
Bob Finch & Melissa	Erin Fry	Kenneth Goebel	Joan Hahn	Floyd & Jana Hassett
Lain-Finch	Stephen & Susan Fry	Richard Goerke	Jane Haibel	Irene & Charles Hathaway
Ethel Fischer	Edward & Rita Furdak	Wesley & Lorene Goff	Rick & Chris Halbert	
Brian & Vera Fisher	Keith & Jean Gaede	Doug & Karen Goodkin		
Bruce Fisher	Joel & Lucille Gaff	T. James & Marilyn Goodwin		
Ryan & Kelly Fisher	Christopher & Mary	Armen & Carolyn Googasian		
Kay Gram Fitzgerald	Gaffield	Anita Goor		
Tamurla Fletcher	Douglas Gage & Cheryl Sisk	Eleanor Gorman		
Diane & Alan Florkowski	Peter & Patricia Gaines	Thomas & Inez Gotts		
Jane Fochtman	Alex & Mary Anne Galbraith	James & Sue Grady		
Bill & Mary Fogarty	Gerald Gallagher	Grand Traverse		
David Foley & Margaret	Gary & Victoria Gallup	Audubon Club		
Willman	Paul Gambka	Grand Traverse Industries		
Joanne Folsom	Robert & Christine Gamble	Georgine & Tom Grapes		
George & Mary Ford	Philip & Lois Gannon	Kathy Grappin Gish		
Margaret Forgione	Karen Garber & John	Michael & Christine Gravlin		
Barry & Julie Foster	DesMarais	Charles & Judith Greaves		
Bud & Nancy Foster	Erica Gardner	Rose Green		
Emily Foster	Sallie Gardner	Arthur & Susan Greenlee		
Bob & Ruth Fountain	Heidi Garrahy	Elliott & Sandra Greenspan		
Nancy Foust	Clay & Linda Garrett	Lorne Greenwood		
Wendy Fowler &	Susan Garrison			
Michael Oxley	Janet Garvey & Jack Maddox			

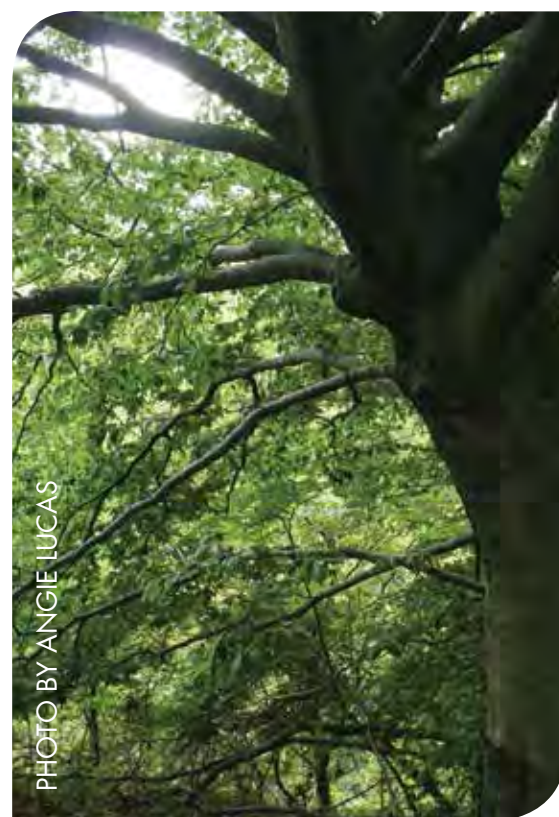


PHOTO BY ANGIE LUCAS



PHOTO BY NATE RICHARDSON

David & Margaret Hauser
Jon & Peggy Hawley
Gary & Allison Haworth
Tom Haxby
Andrew Hayhoe
Richard Haynes
Robert & Barbara Hefflin
Debra Heiden
Jerry & Jamie Heim
Alison & Conrad Heins
Gregory Hekel
Margaret Hemming
Patricia Hendry
Cameron Henke
Bill & Ann Henning
Sandra & Mark Henschell
Walter Herrick
Roger Hersey
Carol Hess
Doug & Martee Hickman
Paul & Ruth Anne Hickman
David & Judy Hicks
Joyce & Garland Hicks
James & Lois Higgins
Ann & Don Highlands
Jane & Carol Highsaw
Jim Highsaw & Linda
Prentice
Cheryl & Richard Hiipakka
Bruce & Anne Hildreth
Audrianne Hill

Matthew Hilliard
Steven Hilty
Alan & Elizabeth Hindmarch
Jim & Alice Hinkamp
Dot Hinsch
Warren & Suzanne Hinsch
Daniel & Susie Hintz
Richard Hitchingham
Thomas Hitchman &
Keith Hewitt
David & Liane Hodgman
Deborah Hogan
Robin & Patrick Hogan
Virginia Hogan
Steve & Annie Hogler
D. Gary & Karen Hogue
Jo & Donna Holmes
Pres & Cindy Holmes
Michelle & Robert
Holschuh Simmons
Stanley & Betty Holzhauer
Fred & Kristine Homburg
Anne Honhart & Jean Smith
Mel & Marlene Hopp
Brad & Jan Hopwood
Mary Hotson
Linda & Bill Householder
Arline Howe
Gary Howe
John Howe & Candice
Gancia

Richard & Jean Hoxie
James & Dawn Hubbell
Richard & Sally Hug
Michael & Lesa Huget
John & Wilma Hultman
Dawn Humphreys
John Hunt
Eileen Huntzicker
Susan Huntzicker
Craig & Ginger Hupp
Mary & Robert Hurley
John Husted
Amy Hutchinson
IBM International
Foundation
Illinois Tool Works
Foundation
John & Kathy Imboden
David Ingell
Jerry & Carol Inman
Ann Ivers
Abdeen Jabara
Isabel Jackson
James Jackson
John & Kathy Jahoda
Robert & Mary Jaklevic
Joachim & Christa Janecke
Lee & Shirley Janssen
Molly Jarema
Jennifer Jay &
Evan Johnstone

David & Christine Jaymes
Alice Jeffers
Hollis & Karen Jencks
Donald Jennette
Phyllis Jensen
David Jeschke
Barbara Johnson
Duane & Norma Johnson
Gary & Carol Johnson
Keith & Claudette Johnson
Kim & Margaret Johnson
Ronald & Sharon Johnson
Johnson/Clark Printers
Barb Johnson Ellis &
Kathy Simpson
Greg & Jennifer Johnstone
Paula Jonas
David & Nancy Jones
Debbie Henn Jones
Molly & William Jones
Tom & Jeanne Jorgensen
Philip & Susan Joseph
Juniper Garden Club
Thomas & Sarah Juntune
Raymond & Beverly Jusick
Linda Kao
Carol & H. Peter Kappus
Robert Kasperek &
Lynn Formanczyk
Margaret Kauffman
Diane Kecskes
Charles & Margaret Keil
Marilyn Keil
Dean Keiser
Bill & Nancy Lou Kelly
Patrick & Mary Kelly
Robert & Judith Kelly
Ellen & William Kelso
Cliff & Kathy Kelto
Richard & Lynne Kercher
Jessica Kerfoot
John & Connie Kerns
Jeff & Sue Kessler
John & Donna Kessler
Nathan Keysor
Charles & Janet Kibby
Corey & Rebecca Kienholz
Connie & Thomas Kiessel

Brad & Amanda Kik
Janet Killian
Steven & Mary Kin
Dennis Kinder
Linda & Cliff Kinery
James & Rose King
Robert & Susan King
Robert & Karen Kingon
Darrell & Shirley Kinnan
Kevin & Kimberly Kinnan
Kathleen Kircher
Lewis & Char Kirchner
Thomas & Leah Kirchner
Tom Kirwin
Rhea Kish
Grant Kitchen
Eric Kivisto
Phoebe & Anthony Klain
Molly & Charles Klettner
Edward Klim
Donna & Jerry Klinefelter
Phil & Margaret Knapp
Garold & Janice Kneale
Mary Knebel
Linda Koebert & Michael
Vickery
Susan Koenig
Don Kogut
Betty Kohl
Mera & Peter Kohler
Donald & Mildred Komrska
Lucy Anne Kooi
Marilyn Koons
Richard Kooyman &
Melanie Parke
Steven & Kathleen Kopitz
Richard Kosinski &
Deborah Ochs
Mark & Eileen Koslen
Mark & Debra Kosowski
Sanford & Ellen Kossek
Richard & Shelley Kotz
Rosemary & Charles
Kowalski
Carol Kozelka
Kima Kraimer
Ted Kraimer
Charles & Judy Kraus
Joanne & John Kream

Anne & Ira Kreft
 Claire Kreher
 Eileen Kreiner
 Amy Krigbaum & Phillip Conroy
 Edmund & Anne Krigbaum
 David & Linda Krill
 Jeff Kroeger
 Warren & Sharlene Kruger
 Dennis & June Krus
 William & Mary Kubat
 Tom & Linda Kucera
 David & Teri Kuffner
 Anne & Matt Kuhlmann
 George & Betty Kuhn
 Robert & Kelley Kuhn
 John & Linda Kuipers
 Jerry & Judy Kulka
 Susan & Duane Kullberg
 Kathy Kurap
 Jeff & Kelly Kurburski
 Bill & Louise Kurtz
 Clare Kurz & Charles Pryde
 Pat & Jim Laarman
 James Lagowski
 Kenneth & Diane Lahti
 Jayme Lahut & Katherine Robinson
 Bruce & Andi Laidlaw
 Robert Lakey
 Lois Lamb
 Helen & Mike Lambert
 Dr. Timothy Lambert
 Martha Landis
 Amy & Victor Lane, Sr.
 Theodore & Natalie Lanham
 Gordon & Veronica LaPointe
 Sherry Lark
 Medley Larkin
 Pamela Larkin
 Craig & Susanne Larrabee
 Kimberly Larrow
 Gary & Cheryl Larson
 John & Mary Anne Larzelere
 Joey & Marilyn Latterman
 George & Margaret Laubach
 Kelsey Lauer
 Dr. Charles & Dorothy Laufer

Bernard & Donna Lavas
 Hazel Lawrence
 David & Marty Leavenworth
 Carole & Willie Lee
 David & Patricia Leege
 David & Rebecca Leege
 Ted & Yolanne Leno
 Lori & Mark Leugers
 William & Nancy LeValley
 Robert & Margaret Levine
 Debra Lewis & Kevin Nagy
 Dorothy & John Lewis
 Richard & Colleen Lewis
 John & Cynthia Lhost
 Fred & Jane Libbing
 Tom Lieb
 Gordon & Kelly Liechti
 Lisa Lightfoot & Marshall Rugg
 Lance & Mary Lindwall
 Gerald Linn & LuAnn Orbeck
 Jay Lively
 Gary & Sharon Lloyd
 Patricia & Stephen Lockman
 Ryan & Logan Lockman
 Robert Logee
 Matthew Lohrentz
 James & Donna Long
 John Long

James & Miriam Longcore
 A. Catherine Look
 Catherine & John Loomis
 Dale & Judy Lopus
 Staton & Carol Lorenz
 David & Beverly Lotz
 J. Ron Lovasz
 Ray & Nancy Ludwa
 Mark & Brenda Luikart
 Nancy & John Lukasiewicz
 Jane & James Lund
 Tim Lund
 Phillip & Usha Lundberg
 Cliff & Jo Lundeen
 Ben & Sally Lundquist
 Charles Lundstrom
 Sarah Lutes & Linda Guthrie
 Donald & Norma Lynch
 Roy & Asta Lynch
 Thomas & Barbara Lyon
 John & Anne Mabley
 Mary MacDowell
 James & Christina MacInnes
 Brian & Barbara MacInnis
 Maxine MacInnis
 David & Lorah MacIntosh
 Robin & James MacKenzie
 Ellen MacKinnon
 Macy's, Inc.

Richard Maddin
 Mark Maddox & Sarah Sutton
 Tom & Gladys Maguire
 Stephen & Carole Mahoney
 Jean Maiville
 John & Sue Ann Makinen
 Gerard Mandziuk
 Dale & Marie Mankin
 Barbara Manning
 Karen & David Manthei
 Marathon Automotive
 James & Evelyn Marchio
 Linda & Anthony Marchio
 Gary Marek & Mary George
 Joseph & Norma Mariage
 Kenneth & Jo Marks
 Richard & Lori Marl
 Robbie Marsden
 George & Carol Marsh
 Jamie & Barbara Marsh
 Robert Marshall
 David & Nicole Martin
 Joseph & Marilyn Martin
 Kay Martin
 Porter & Sherrie Martin
 Leon & Shirley Martuch
 Charlotte Marx
 Dave Mathews
 Emily Matteson

Jack & Joann Mayer
 Linda & Mike Mayer
 Monte & Nina Mayes
 Pauline Mayo
 Tom & Carolyn McAnallen
 John & Geraldine McAuliffe
 Melissa McBrien & Raymond Landes
 John & Havala McCall
 Beverly McCamman
 John & Suzanne McCarthy
 Gloria McClay
 Richard & Johanna McClear
 Jack McClellan
 Meredith McComb
 Will & Carole McCord
 Lawrence & Margaret McCormick
 Bob & Lisa McCririe
 Michael & Sandra McDonald
 Patrick & Coleen McDonald
 John McGilliard
 Christie McGue & Robert Calt
 Donald McIntyre & Debra Mox
 Dan & Lucy McKeen
 Dave & Debra McKeon
 Sharon McKinley
 Jane McKune



PHOTO BY AL TAYLOR

Nick & Mary Jean McMaster	Robert & Marelle Morrell	Mary Ellen Newport	Philip & Heidi Pandolfi	Tim Prescott & Linda Wessels
Pat & Karen McNamara	Herbert Morris	Beverly Newson	Roland & Sara Pandolfi	Lloyd & Shirley Preston
Jon Mead & Katherine Boyne	Dr. James Morris	Cynthia & Charles Newton	Glenn & Sandra Paradis	Timothy & Margaret Price
Thomas & Linda Mead	Paul & Nancy Morris	Ray & Paula Nichols	Thomas Parfitt	Robert Probst
John & Nancy Meade	Richard & Elizabeth Morris	Amy Nickolas	Robert & Julee Parker	Elizabeth Proulx
Rod Meade	Mary Ellen & Robert Morrison	Michael & Jane Niemi	Wendell & Mary Parker	Emerson & Elizabeth Pugh
Lisa Meleski	Jacqueline Morse	Sam Niemi	William & Mary Ann Parker	Robert & Connie Pulcifer
James & Mary Virginia Mellow	John & Victoria Moseley	John & Marilyn Niesen	Henry & Sara Parks	Bonnie & Doris Purvis
Rita Melotti & Andrew Bishop	David Moyer & Barbara Hastings	Timothy & Vicki Nolan	Scott & Frances Parry	James & Mary Pylman
Victoria & Julian Mendoza	Anne Mudgett & Scott Furgueson	Daniel Norbeck & Colleen Carol	Glenn & Catherine Pascoe	Mrs. Marilyn Quick
Katherine Messenger & Will Wright	Karen Mudgett	Richard & Sondra Nordin	Pasko Properties	Larry Quimby
Kristi Messing	Eric & Amy Mueller	Doris Norling	Craig & Judy Passon	Robbie Rabanus
Linda Messing & Kenneth Rudisel	Linda Mulder	Rebecca Norris	June & John Pate	Robert & Elaine Rabideau
Judith Mich	Amy & Sean Muldoon	North Country Cars & Credit	Penelope Paulley	John & Linda Racine
Susan Michener	Patrick & Christine Muldoon	Northwoods Ski & Spree Club	Jennifer Pavlat	Ruth Radomski
Michigan Dental Association	Richard & Marilyn Mumaw	Jackie Norton & Robert VanDragt	PayPal Giving Fund	David & Laurie Randall
Philip & Connie Micklin	Arnold & Allison Mummert	Sheri Novak	Kate Pearson & Steve Cruzen	Jack & Mary Pat Randall
Microsoft Corporation Matching Gifts	Jo Ann & Gary Munce	Arlene Nowak	Diane & Thomas Pederson	James & Lisa Randall
Norman Mientkiewicz	Niki & Michael Murphy	Ronald & Ruth Nugent	Henry & Sally Peet	Katherine & Herbert Ranta
Winifred Milford	Sharon Murphy & Sharon Montonye	John & Sandra Nuske	Janice Peploski	Ross & Shelly Rapaport
Betty Miller	David & Marilyn Nussdorfer	David & Marilyn Nussdorfer	Periinkle Garden Club	Arnold & Joan Ratkowski
David & Donna Miller	Arlene O'Brien & Jean Livingston	Elizabeth Perkett	Elizabeth Perkett	Ricki Ravitts
Keith Miller & Harriet Miller-Brown	Theresa O'Brien	Perry Electric Inc.	Perry Electric Inc.	Bradley & Marilyn Raymond
Richard Miller & Barbara Cribar	Livingston	Miles Peterle & Lise Anderson	Miles Peterle & Lise Anderson	John & Virginia Raz
Wayne & Jane Miller	Theresa O'Brien	Elmer & Ruth Peterman	Elmer & Ruth Peterman	Katherine Redman
Mary Beth & James Milliken	Richard Odell	Jean Peters	Jean Peters	Richard & Leslie Redmond
Donald & Elizabeth Millington	Robert & Ann Ogur	Mary Peters	Mary Peters	Thomas Reeber
Claud Mills	Peter Ohrnberger	Althea Petritz	Althea Petritz	Charles & Mary Reed
John & Dorothy Mills	Carla & John Olds	George Petritz	George Petritz	John & Barbara Reed
James & Peggy Miner	Megan & Andy Olds	Michael & Kathryn Pettersen	Michael & Kathryn Pettersen	Patricia & William Reed
Carol Mitchell	Don & Ginny Oleson	William & Jane Pettis	William & Jane Pettis	Richard Reed
Lisbeth & Paul Mitchell	Lisa Oleson & Buckley Johnson	Denny Phillips	Denny Phillips	Ruth Reeve
Samuel & Karen Mitchell	Alden & Barbara Olson	Scott & Pam Phillips	Scott & Pam Phillips	Mike & Kathy Reid
Dan & Lynne Mixer	J. Thomas O'Reilly	Stephen Phillips	Stephen Phillips	Norman & Carol Reinke
Susan Mohr & Ken Krentz	Mary Lee Orr	Molly Phinny	Molly Phinny	Greg & Terri Reisig
Peter & Sharon Moller	Thomas & Mary Osborn	Janette Pivitt	Janette Pivitt	Conrad & Adele Reiter
Maxine & Gary Mondshine	Karen & Tom Oswald	Marie Plester	Marie Plester	William & Leone Renis
Donald Moon	Don & Bette Oswell	Paul & Barbara Poehlein	Paul & Barbara Poehlein	Emilia Rennie
Donna & James Moore	Nancy Outten	Steve & Lucy Polemitis	Steve & Lucy Polemitis	Molly & John Martin Resnik
Susan Moore	Donald & Christine Owen	James & Anne Porritt	James & Anne Porritt	Casey Ressel & James Morse
William & Katherine Morgan	Judy Owen	Portage Lake Garden Club	Portage Lake Garden Club	Kent & Mary Ann Reynolds
Dorothy Moroff	Kipp Owen	Deb & Mark Posthumus	Deb & Mark Posthumus	Gilbert & Mary Richards
	Leroy Owens & Mary Lou Henderson	William Prakken	William Prakken	Clark Richardson
	Packaging Corporation of America	Allen & Linda Pratt	Allen & Linda Pratt	Jon Richardson
	Leocadio & Donna Padilla	Mary Pratt	Mary Pratt	Karen Richardson
	Beverly Page	Terry & Anita Pratt	Terry & Anita Pratt	Palma Richardson
		Woneta & Robert Prenger	Woneta & Robert Prenger	Dianne & Howard Richter



Sam & Angie Riffell
David & Ann Rigney
Judy & John Riley
George Rinder
Robert Riney & Sandra
Bowman-Riney
Heather Rinkel
Constance Riopelle
David & Kathy Ripmaster
Richard & Janet Robb
Karen Roberts & Mike
Madden
Alexander Robinson
Michael Robinson
Patricia & Edward Robinson
Theodore & Maureen
Robinson
Chase Robison & Amber Eads
Michael & Libby Robold
Larry & Elaine Rochon
Carl & Barbara Rockwell

Gordon Rockwell
Barb & Mike Rodenberg
Jim & Julie Rodes
Scott & Jennifer Rodes
Sally Rodgers
Sue Rodgers
Nancy & Robert Rodriguez
Kristen Roell
Dan & Martha Rogalny
Bruce & Joyce Rogers
Gwen Rogers
Daniel & Diane Roketenetz
David & Elizabeth Rollert
John Romani & Barbara
Anderson
Richard Romanowski
Joyce Rombouts
Thomas & Helen Ropers
Karen & Bill Rosa
Paul & Carol Rose
John Ross

Keith Ross & Loise Doud
Raymond & Ricky Ross
Walter & Pat Ross
James & Brenda Rossi
John & Barbara Rothhaar
Ken & Sue Rottet
Diana & Basil Rowe
Vaira Rozentals
Jeff & Jen Rundio
Donald & Fernmarie Russell
Matthew & Adrienne Russell
Phyllis & Richard Russell
Rick & Cynthia Sack
David & Carol Sagaser
Donald Sagaser
Jerome & Brenda Sage
James & Verna Sak
Janet Salathiel
Pat & Lyn Salathiel
Diane Samarasinghe

John & Suzette Sanborn
Paul Sander & Lori
Lichtman-Sander
Rocco & Teresa Sapienza
Edna Sargent
John & Margaret Sargent
Donald & Margaret Sarna
Mike & Nancy Sauve
Anne & Mitchell Saywitz
Robert Scales
Vincent & Kathryn Scanio
Howard Schaefer
Wylie & Donald Schaffer
S. Philip Schaffner
William Scharf
Marilyn Scheck
Jenna Scheub
Phil Schloop
Neill & Joan Schmeichel
Carl Schmult
Jane & Fred Schneider
John & Elizabeth Schneider
Greg & Joanne Schnesk
Miriam Schreck
Maria Schrems
Douglas & Judith Schroeder
Phyllis & Paul Schroeder
Wallace & Patricia Schroth
Margaret Schubel
Susan Schuler
Thomas & Nancy Schulte
Katherine & Steven Schultz
Don Schuster
Earl & Georgann Schuster
Susan Schwartz
Jean Schwerin
Betty & Richard Scott
Chris Scott
John & Gloria Scott
Sharon Scranton
Gary & Nancy Seabrook
John & Susan Seaman
Blaise & Rosemarie Sedney
Gary & Eiko Seevers
Jack Segal
George & Deanna Seifried
Gertraude Seitter
William & Kathryn Seitz

Richard Selleck
Thomas Senior
Chris & Michele Shafer
George & Roberta
Shambaugh
Shari & Benjamin
Shambaugh
Elizabeth Sharp
Linda & Stuart Sharp
Faye Shaw
Matthew Shaw
Joan Sheard & Myrna Yeakle
William & Maridel Sherk
Diana Wege Sherogan
Steve & Carol Shuckra
Amy & Clark Shuler
Barclay Shultz
Heather & Rick Shumaker
Siebenthaler Foundation
Allan & Marjorie Siefert
James & LaRayne Siegmman
Katherine Simmonds
Wayne & Jennifer Simmons
Howard & Kathryn Simpson
Jodi Simpson
Jan Sinclair
James & Shannon Sitek
Patricia Skifstad
Barbara Skurdall &
Ann Strehle
Mary Ann Slazinski
Ronald Smeltzer
Evan Smith
Mark & Ann Smith
Mark & Susan Smith
Ted Smith
Patrick Smolinski
Maureen & Paul Smyth
Ross & Shirley Snare
Brian Sniokaitis & Maggie
Smith
Cliff Sorrell
Richard & Diana Sosnowski
Herbert Souder
William & Gretchen Soutear
Deborah & Tom Southworth
Philip & Barbara
Spangenberg
Linda & John Spevacek



PHOTO BY NATE RICHARDSON

Dave & Barb Spinniken
Joseph & Arleina Spino
Lorry Spitzer & Diane Young-Spitzer
Patrice Spitzer
Judith Spohn
Jim & Dottie Spousta
John & Elizabeth Sprague
Reg Sprik
Jerome Springer
William & Patty Springstead
Ron & Dee Springsteen
Stephen Spurr
Dan & Beth Stainforth
Linda & Leo Stallman
Verna Stallone
John Stamm
Jim & Jill Stander
Colette Stanish
Gloria Stapp
Stardust Memorials, LLC
Gretchen Staub
Gary & Jane Stauffer
Susan Stearns & Franklin O'Loughlin
John & Lynn Steben
Thomas & Eugenia Steel
Steelcase Foundation
Eric & Nancy Stehouwer
Kay & Robert Stehouwer
Fred & Mary Ann Stehr
Robert & Grace Stein

Patti Steinmayer
Robert & Michelle Stephanoff
Yvonne Stephens
Clarence & Catherine Stephenson
Louise Sternberg
Fred & Bettie Sterner
Carol Stetter
Gayle & Stephen Stewart
Kent Stewart
D.W. & Joyce Stibbs
Jenifer & Daniel Stiebel
Stiegemeier Family
Frank & Jill Stiltner
David & Linda Stimpson
Martha Stimson
Paul Stimson
Beatrice Stone
Donald & Betty Stone
Stonecraft Design & Construction
Barbara Stoner
Barbara Stout
Lori Strager
Joseph & Carol Strauss
Rose Strogatz & Richard Bikoff
John & Irene Stuart
Marvin & Carol Studinger
Steven & Debra Styers
Chris & Ali Sullivan
Shirley Summers

Robert Sunday
Glenn & Kathy Sundbeck
Jerry Sura
James & Dona Sutherin
Mark & Susan Sutton
Herbert Swanson
Ward & Francoise Swingle
Scott Swinton & Sylvia Morse
Philip & Susan Szurek
Carl & Eleanor Tacke
Bing Tai & Catherine Allen
Alice Tang
Joseph Taraskavage
Philip & Susan Tarczon
Janet Taylor
Michael & Jacquelyn Teagan
Nancy & William Tebelman
Steve Tebo
Svend & Marjorie Teglhoj
Margaret & Timothy Tewson
June Thaden
Kelly & Carolyn Thayer
Ron & Jane Theobald
Cyril & Jacqueline Thiel
Homer Thiel
Audrey Thomas
Carol Thomas
Charles & Marilyn Thomas
Deborah & Jean Thomas
Susan & Randall Thomas
Vashti Thomas
Gary Thompson
Janet & Tom Thompson
John & Sandra Thorne
John Timmer
William Timmins
Janet & John Tinnette
Patrick & Susie Tobin
Thomas & Diane Todd
William & Mary Todt
Steve & Amy Tongue
William & Christine Toole
Tom & Mary Torbet
John & Linda Townsend
Jon & Harriet Townsend
Trillium Garden Club
Lewis Tripp

Truist
Cynthia & Ron Tschudy
Dan & Joanne Tubbs
Kathy Tuckerman
Dori Turner
Ralph Turner
Tom Turner
Tom & Judy Tuynman
Katherine & Gary Twomey
Karen Twyman
Merilyn Ueno & Douglas Zernow
Gene Ulen
United Way of Washtenaw County
Phyllis Valentine
Beau Vallance & Jack Carpenter
Terry & Laura VanAntwerp
Marcia Vandenbelt & James Cutler
Doug & Linda Vander Hoff
John & Jeanne VanderMeer
Daniel VanHaften
Esther VanHammen
Dana Vannoy
Bill VanPetten
Gary & Beverly VanRaalte
Mary Van Valin
George & Lauri Varga
Christine Varner & Peter Romeo
William & Barbara Vaughan

Lois Verbrugge & Elmer Gilbert
Douglas Verellen
Alan & Bev Vicstein
VIKTOR Incentives & Meetings
Tom & Maggie Vinette
John & Lynn Vinkemulder
Clifford & Frances Voice
Michael & Lisbeth Votruba
Sidney & Susan Wagner
May Waldron
Howard & Dianne Walker
Kent & Suzanne Walker
Richard & Mary Walker
Brent & Norma Walton
Steven Walton
Doug & Ann Ward
Harmon Ward
Margaret Ward
Dennis & Ann Wardowski
William & Di-Anne Warmbein
Kenneth & Patricia Warner
Anne Warren
Flint & Patty Watt
Price & Jane Watts
James & Sharon Wawrzyniak
Mary Weadock
Justice Elizabeth Ann Weaver
Kennard & Judith Weaver
Mark Weaver

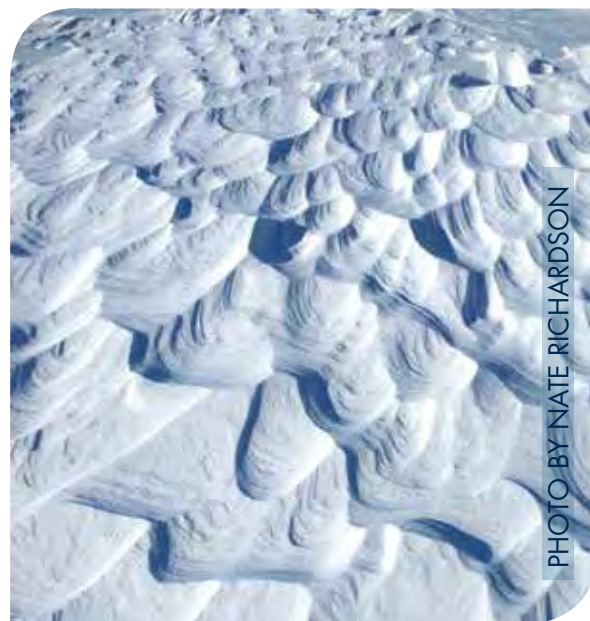


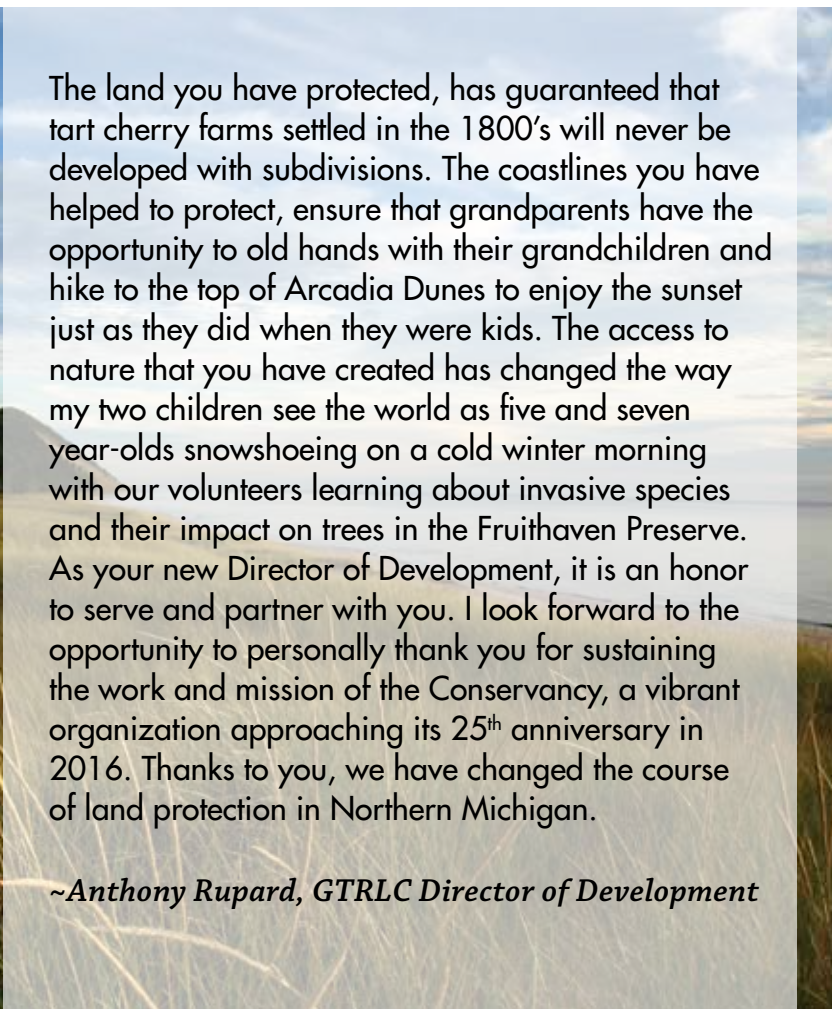
PHOTO BY NATE RICHARDSON

Tim Webb & Gail Roberts	Dennis Whalen	Bonnie Willings	Louis & Joyce Wood	Garry Zachritz
Ellen Weber	Tim & Colette Whalen	John & Angela Willis	Susan & James Woodburne	Richard Zaebst
Dave & Janice Webster	Mac & Marilyn Whisner	Thomas & Gwen Willson	Kathleen Woolson	Ron Zeeb
David Webster Construction	Harvey White & Alice Lloyd	Bart & Patty Wilson	Erin Word	Joseph Zepf
Richard & Lucinda Weiermiller	Jeff White	Gary & Kathryn Wilson	Helen Woytowich	Thomas Zieziul & Natalie Killingstad
Peter & Nancy Weir	Laurence & Carole White	Lyle & Nancy Wilson	Douglas & Margaret Wozniak	Sandra Palmer Zilincik
Jane Weis	Erin & Ben Whiting	Steve Wilson	John Wunsch & Laura Wigfield	Richard & Monica Zillich
Bob & Maurine Weisenburger	Steve & Amy Whitlatch	Steven & Mary Wilson	Walter & Dolores Wurst	Barbara Zimmerman
Darragh Weisman	Luann Wieber	Sue & Robert Wilson	Donna Wyatt	John Zimmerman
Mitchell Weiss	Rick & Raj Wiener	Mr. & Mrs. William Winkel	John & Janet Wyrwas	Liz & Scot Zimmerman
Thomas & Marcy Welburn	Bruce & Dorothy Wierman	Nathan Winkler	Ron & Maureen Yahrmatter	Michael & Ann Zipser
Doug & Cheryl Welday	Charles Wilbur & Caroline Blaum	Emma Winter	Laura Yeo	Stephen & Nancy Zirkle
Brad & Cheri Weller	Diane Wilbur	Henry & Carrol Wise	Birgit Yetter & Keith Conway	Barbara Zitzewitz
Tom Wells & Rebecca Jones	Wildtype Native Plant Nursery	Alfred & Barbara Wishart	Yoga for Health	Jan & Daniel Zolik
Donna & Bill Weltyk	David Wilkins	Gary & Margaret Withall	Fred Young & Julie Youmans	Jay & Sharma Zollinger
Dale & Barbara Wentzloff	John Wilkinson & Robin Silva-Wilkinson	Dwight & Georgie Woessner	James Young	Robert & Greta Zwinck
Edwin & Jacklyn Werner	Phyllis & Ron Wilkinson	Shirley & Arthur Wolfe	William & Elaine Young	
Bruce & Catherine Werts	David & Judy Williams	Wendy Wolfe & Paul Wawrzyniek	Nancy Yuhn	
Carol & Mark Werts	Ruth Williams	Jesse & Molly Wolff	John & Peggy Zachman	
Thomas Wertz		Gordon Wolters		
Martha West		David & Ann Wood		



The land you have protected, has guaranteed that tart cherry farms settled in the 1800's will never be developed with subdivisions. The coastlines you have helped to protect, ensure that grandparents have the opportunity to old hands with their grandchildren and hike to the top of Arcadia Dunes to enjoy the sunset just as they did when they were kids. The access to nature that you have created has changed the way my two children see the world as five and seven year-olds snowshoeing on a cold winter morning with our volunteers learning about invasive species and their impact on trees in the Fruithaven Preserve. As your new Director of Development, it is an honor to serve and partner with you. I look forward to the opportunity to personally thank you for sustaining the work and mission of the Conservancy, a vibrant organization approaching its 25th anniversary in 2016. Thanks to you, we have changed the course of land protection in Northern Michigan.

~Anthony Rupard, GTRLC Director of Development



3860 N. Long Lake Rd., Ste. D
Traverse City, MI 49684
231.929.7911
GTRLC.ORG

NON-PROFIT ORG.
US POSTAGE PAID
TRAVERSE CITY, MI 49684
Permit No. 306



PHOTO BY ANGIE LUCAS