



landscript

SPRING 2013 | VOL. 60 | GTRLC.ORG

Protecting Significant Natural, Scenic and Farm Lands, and Advancing Stewardship, Now and For All Future Generations



PHOTO BY NATE RICHARDSON

Our Annual Report

STORIES OF PHILANTHROPY

What's on the Horizon

IN THIS ISSUE:



04 LEAVING A LEGACY
*Patricia D. Robinson's
meaningful conservation legacy*

**06 MISTY ACRES: THE BORWELL
PRESERVE**

08 PROTECTING FARMLAND
*And a new farm protection
program*

10 GREEN PHILANTHROPY
*And a very exciting new land
protection effort*

**13 COMPLETED! RAILROAD POINT
NATURAL AREA EXPANSION**
The story of how it all began

16 ARCADIA
Where Life Meets Water

18 ACME'S BAYSIDE PARK
*There's lots to look forward to in
2013!*

20 ANNUAL REPORT

**22 REGIONAL LAND PROTECTION
MAP WITH 2012 UPDATES**

**24 ALL GIFTS RECEIVED IN 2012
THANK YOU!**

43 CONSERVANCY EVENTS
You won't want to miss these!



Dear Friends,

Lately, our region is on everyone's top-ten list of fabulous places to live, visit, and play. In almost every case, it starts with our natural resources.

Just a few short decades ago, many feared that, as has happened elsewhere, our natural assets would be squandered. In response to the threat of losing what makes our region so special, a community of visionary leaders formed the Grand Traverse Regional Land Conservancy with big goals and dreams in mind. You—and thousands of other loyal supporters—responded to the call to action.

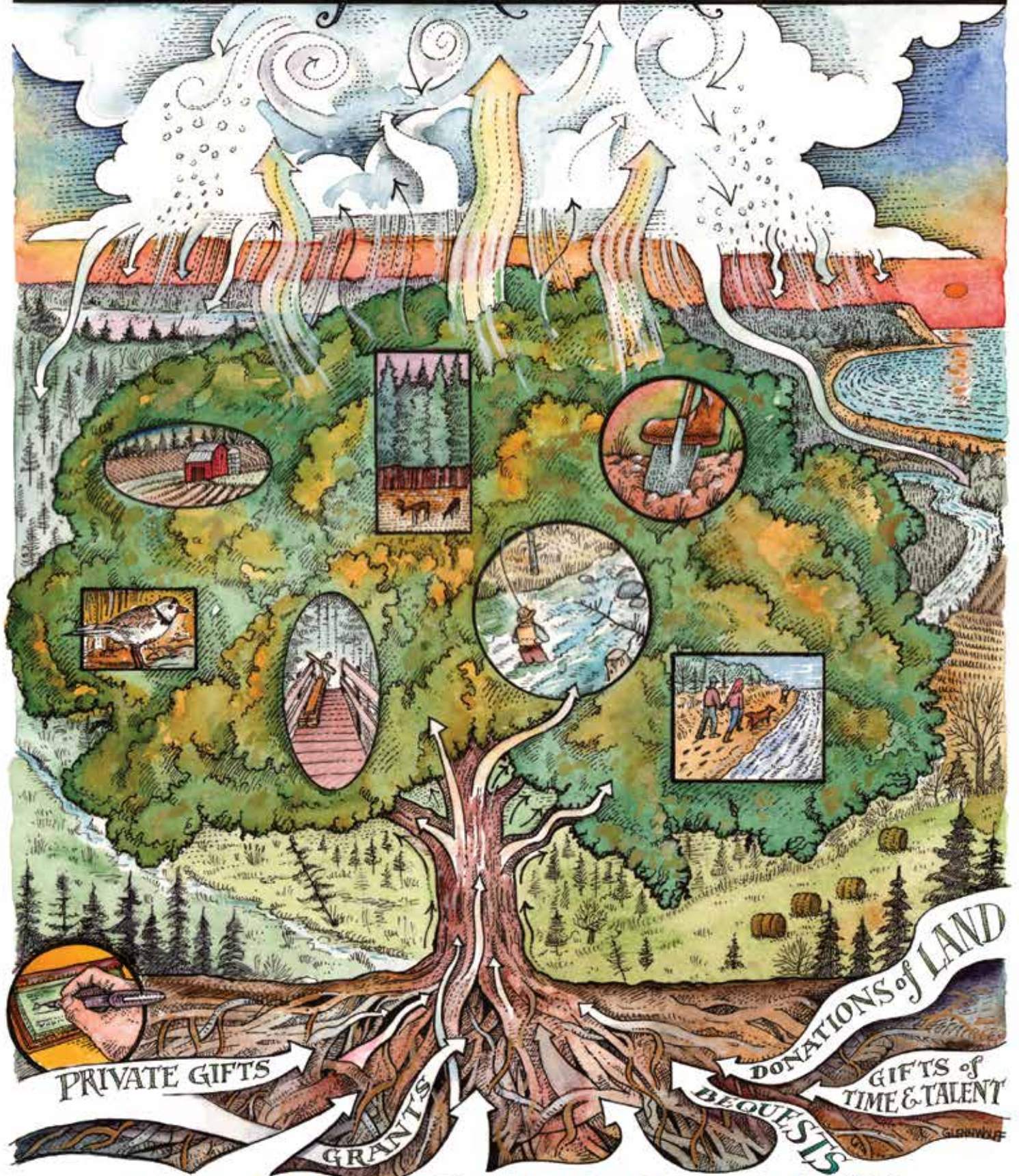
Thanks to you, 2012 was another year of noteworthy accomplishments, including:

- The Railroad Point Natural Area on Crystal Lake will soon be nearly tripling in size thanks to individual gifts of over \$452,000 that leveraged a nearly \$1 million Michigan Natural Resources Trust Fund acquisition grant. The additions to this premier public natural area will enhance the Betsie Valley Trail system and the recreation-based economy of Benzie County.
- We met our essential goal for unrestricted gifts that fund the “on-the-ground” land protection and stewardship work that must be accomplished each year. Our supporters are clearly sending a strong signal that we are on the right track with our land protection, stewardship, and other efforts to enhance access to some of our region's best natural and recreational assets.
- With a sharp eye on the future, our Board and staff are focusing on growing our permanently restricted Stewardship Endowment Fund. I am proud of the fact that past and current Board members have led the way by making significant gifts that, along with thoughtful bequests and other planned gifts, help endow the protected-lands legacy you have established.
- We received several significant gifts and pledges to important projects in progress, such as the debut of our “Farmability” Program in Antrim and Grand Traverse counties, our exciting work in Arcadia, and the Acme Bayside Park Shoreline Project which, when complete, will transform the experience we have when entering our region along the East Bay coast. Following approval of a \$2 million Michigan Natural Resources Trust Fund grant to Long Lake Township, we also launched a campaign to protect the Timbers Recreation Area on the shores of Long Lake.

We are fortunate to live in a community where so many people care passionately about their natural resources, and we are deeply grateful for your support and your love of northern Michigan!

Glen Chown,
GTRLC Executive Director

CYCLE of PRESERVATION



YOUR SUPPORT
NOW AND FOR ALL FUTURE GENERATIONS



Photo by Dana Vannoy, taken at the Golden Days Loon Preserve, Bellaire

LAYERS OF SUPPORT PERPETUATE A FAMILY’S CHERISHED CONSERVATION VALUES

How many ways can a caring member of the community and her family demonstrate their values by helping GTRLC to further the protection and preservation of special lands, natural resources, and wildlife areas in our region?

When Conservancy friend Patricia Davin Robinson passed away last June, her family’s support for our work had already been established over decades of generous giving.

In 1960 Patricia and her family began regular visits to their cottage on Lake Bellaire in Antrim County. This cherished spot provided the focus for Patricia to help further the Conservancy’s work. Her gift to assist in establishing the Golden Days Loon Preserve on Lake Bellaire was made on behalf of her late husband, Alexander Cochrane Robinson IV, a railroad executive and devoted fly fisherman who passed away in 1987.

With Patricia’s passing last year, her family and friends solemnized their respect for her values through memorial gifts to the Conservancy Fund, which makes possible our annual general operations and which Patricia also generously supported. Gifts made in memory or in honor of individuals or events provide a deeply appreciated way to recognize what we and others hold dear. When families specify GTRLC as a designated charity for memorials, what their loved ones cared for during their lifetimes is highlighted in the community in a way that can serve to comfort and sustain.

Before her passing, Patricia made sure that what was meaningful to her would enjoy her support forever by taking advantage of another giving option: she made a provision for GTRLC in her estate plan. When her eldest son and executor, Sandy Robinson, spoke with

the Conservancy about this legacy gift, he expressed the family's desire that projects in the Antrim County area and the Chain of Lakes watershed could benefit from the funds Patricia set aside.

Accordingly, GTRLC's Planned Giving Program Manager, Diane Dupuis, worked with Sandy to find gift designations that would honor the family's closest-held values.

Part of Patricia's legacy has been allocated to GTRLC's Stewardship Endowment Fund. The corpus of this fund is never expended, and therefore provides the most lasting way for those who value GTRLC's work to forever remain a Conservancy partner. Interest income from the fund provides financial resources to support GTRLC's ongoing stewardship work on properties that have already been protected.

This work includes the management and removal of invasive species, the maintenance of trails, and the conservation of habitat and the preservation of water quality at places like the Golden Days Loon Nature Preserve and other preserves within the Chain of Lakes watershed and Antrim County.

Another portion of Patricia's legacy will be directed over two years to GTRLC's efforts in the Chain of Lakes and Antrim County community. This allocation will, for instance, support staff and volunteer efforts to enhance access to nature at the Glacial Hills Natural Area, which is protected by GTRLC and owned by Forest Home Township and Antrim County. In partnership with these local units of government, with numerous volunteers, and with a work crew from Goodwill Industries, GTRLC has built 12 miles of hiking and mountain-biking trails at this location, and we have plans to build at least 8 more in 2013. This natural area is fast becoming known as a top-tier asset, drawing enthusiastic visitors to Bellaire and the surrounding region.

With her bequest, her gifts to the Conservancy Fund and specific projects, and through the memorials honoring her commitment to our work, Patricia Robinson established a conservation legacy that will have a meaningful impact on our region for generations.



Because so much of our land protection work is about ensuring that the places we save today will be protected forever, planned gifts are indispensable. There is no better way to continue to make a difference for land conservation many years from now.

We will work closely with your financial advisor to design a Gift Planning Option that will meet your personal, financial, and charitable goals. Let us assist you in sharing your legacy to protect northwest lower Michigan long into the future.

For more information contact:

DIANE DUPUIS

*Charitable Giving Specialist/
Planned Giving Program Manager*

email: ddupuis@gtrlc.org

telephone: 231.929.7911

MISTY ACRES: THE BORWELL PRESERVE

We continue to be amazed as we discover the beauty of the forest, fields, streams and river at Misty Acres. We also plan with great excitement for the future use of the farm buildings and agricultural fields as we look to fulfill Naomi Borwell's vision for "a model farm for education and research."

Much of the work undertaken this past year has addressed immediate needs and safety concerns while inventorying the natural features of the land, assessing the condition of existing structures, and determining long-term maintenance costs of the farmstead.

Since the majority of the property is now open to the public every day for all forms of passive recreation as well as both hunting and fishing, we have installed a parking lot, kiosk, and small trail loop to accommodate access and use. We have also surveyed and marked all of the boundaries and developed maps and general information, which is available on our website and also visible on the kiosk at the parking area. Additionally, the Conservancy has begun invasive species removal efforts and also has partnered with Conservation Resource Alliance to address erosion issues along the river.

At the farmstead we are caring for the buildings, grounds, and the small herd of Belted Galloway cattle while making some changes to improve energy efficiency and reduce costs. Our annual Preservation Celebration was held at the farm in July, providing the first opportunity for many of our supporters to tour the farm. We are fortunate to have the expertise of long-time farm manager Barry Reed, who has continued on as an employee for GTRLC after working for the Borwells for nearly four decades. Barry oversees the day-to-day operations of the farm and uses his many talents to keep the farm operating and we value his extensive knowledge of the property.

As we look to the future, we've been considering some new agricultural opportunities and conservation practices that will allow us to achieve Michigan Environmental Assurance Program verification of the farm operations and also better utilize the existing

fields and pastures while improving soil quality and productivity.

In the short term GTRLC has been accepted as a partner with Michigan State University for implementation of a 3-year Sustainable Agriculture Research and Education grant intended to promote and assess the potential for grass-fed beef in our region. GTRLC is one of 21 farms in Northern Michigan to participate in the pilot project. As a partner, GTRLC will produce 10 grass-finished cattle that will be included in the study. The intention of the research is to determine feasibility of producing, processing, and consuming local grass-fed beef in the Grand Traverse region. The grant also includes research on soil nutrients and some education through MSUE in the form of "pasture walks."

In order to participate in this study, GTRLC will need to create a rotational grazing system at the farm that will incorporate the farm's existing hay fields (approximately 56 acres). We anticipate the installation of new fences around the perimeter of the agricultural fields, along with improved watering systems, and we will be re-planting some currently fallow fields.

With an eye toward developing a long-term plan for the property, our staff and Board of Directors are currently working to create goals for the property, identify stakeholders and potential partners, and create decision-making criteria for new activities and partnerships. We hope to talk with stakeholders this year and expect the planning and implementation of changes for the entire property to continue for several years.

Keep an eye on our website if you'd like to see the property. We are planning hikes and other activities, including an Open House at the farm in May when the calves are born!

For more information about what's happening at Misty Acres: The Borwell Preserve, please visit our website, or call Vic Lane at (231) 929-7911.







PROTECTING FARMLAND

Send Brothers Farm

Peace of mind. That's what brothers Art and Dick Send will have as they ease toward retirement, knowing that the family farm, mill and farm store will be passed down to their offspring and not sold for development.

Because of the knowledge, care and savvy of Grand Traverse Regional Land Conservancy's farmland protection staff, the Sends were able to "sell" agriculture conservation easements on two plots of farmland totaling nearly 300 acres. While this land has radically increased in value since its purchase—a sure temptation to sell—the Send brothers were able to recoup a portion of the development value and retain all

other rights, including the right to farm the land and pass it along to their children when the time comes.

Gathering Support and Resources

The Send deal was made possible through the work of Grand Traverse Regional Land Conservancy and the Acme Township's Farmland Preservation Program (created through a 2004 voter-approved, 10-year, one mil property tax that generated funds to purchase conservation easements).

The Conservancy's farmland protection manager, Brian Bourdages, worked closely with other key players, including the federal Farm and Ranchland Protection Program—for matching

funds—and the Michigan Farmland Protection Program—for support in dealing with delays caused by tough negotiations (ultimately resolved) with oil and gas companies that held leases on the property.

By landing governmental grants for Acme Township to acquire the Send Brothers Farm easements, the financial burden for the township was lessened, the Sends' family farm and related operations were protected from residential and commercial development, and the community's agricultural heritage was preserved. The transaction also ensured the protection of the Petobego Creek watershed and its treasured cedar swamp.

Protecting More Farms

Successful work with the Sends led to an unexpected land protection opportunity when Robert Amon, the out-of-state owner of Amon Farm, adjacent to Send Brothers Farm, approached the Conservancy about protecting his land, which had been farmed by the Send brothers since the 1970s.

Located in Whitewater Township, the Amon Farm wasn't eligible for easements through the Acme Township's Farmland Preservation Program, but Amon offered to sell his easement at 25 percent of its value if Grand Traverse Regional Land Conservancy could find the funding.



The Conservancy's Brian Bourdages gained permission from the Michigan Department of Environmental Quality to use Clean Michigan Initiative grant funds to buy the easement, which, in turn, would protect the natural assets in the Petobego Creek watershed of Grand Traverse Bay.

The Send brothers are now able to afford to buy the property from Amon, and it will be permanently designated for agricultural use.

With support from Grand Traverse Regional Land Conservancy, Acme Township's Farmland Program has completed five easements to date, like those of the Send family, totaling 530 acres of protected farmland, with another 1,300 acres in the application process.

As new farm properties are protected, local citizens will continue to enjoy the Send family's fields of sunflowers, corn, wheat and rye in the heart of Acme's farming and natural area—now, and in perpetuity.

FARMABILITY MOVES INTO NORTH US-31 FARMING CORRIDOR

In order for any farmland preservation program to be successful, the farm community must see the benefits to their own farm operations and to the community as a whole.

A new program being launched in 2013, FarmAbility, aims to do just that: educate and inform farm families about preserving land for agriculture use in lieu of selling.

With this program, designed by our colleagues at the Leelanau Conservancy, farm families in Whitewater, Milton, Elk Rapids, and Torch Lake townships will learn how to plan for their farmland to stay in their family or be permanently designated for active agricultural use by others.

As the FarmAbility program educates more families about preserving the family farm and the benefits of agricultural preservation, the program will be more successful, according to Brian Bourdages, farmland protection manager with the Grand Traverse Regional Land Conservancy.

"Most landowners will not consider restrictions on their land, even for considerable compensation, without confidence that their actions will spur other farmers to do the same," says Bourdages. "It's crucial that farmland programs like the one in Acme Township have a critical mass of interested farm families."

With enough involvement, a long-term business environment for agriculture will stabilize and even grow, creating large blocks of protected land dedicated to agricultural use. FarmAbility will encourage families not only to continue farming, but also to make new investments in their operations. With funds for participants to work on succession planning, food safety, and environmental compliance through the state's MAEAP (Michigan Agricultural Environmental Assurance Program) program, these new investments can happen in a manner that sustains our farmland, businesses, environment and water quality.

And that's a win for farmers and the environment.

Our FarmAbility Program partners include:

Grand Traverse Conservation District

MSU NW Michigan Horticultural Research Station

MSU Extension—Center for Regional Food Systems



GREEN PHILANTHROPISTS

INTERIM BUYERS PLAY
CRUCIAL ROLE IN
LAND PROTECTION
WITH “PATIENT CAPITAL”

PHOTO BY NATE RICHARDSON

LAND PROTECTION

Tenacity, patience and a fair share of business savvy describe the deals that transpire when Grand Traverse Regional Land Conservancy acquires a piece of land.

On a number of occasions, unsung heroes also play an important role in the process, serving as interim buyers while public grant funds or privately raised funds are pulled together to preserve a piece of natural, scenic or forest land.

Such was the case in 2012, when Grand Traverse Regional Land Conservancy and their interim buyers assisted Long Lake Township in the purchase of Timbers Recreation Area, formerly Timbers Girl Scout Camp.

As Long Lake Township awaits a \$2,073,000 Michigan Natural Resources Trust Fund grant that will take up to 18 months to funnel up from Lansing, the land is secure—thanks to the invisible conservators.

Interim buyers loan funds or hold onto property for as long as needed. In the case of Timbers Recreation Area, when the grant funds arrive, the “loan” will be repaid, with no outright cost to the interim buyers other than their money being tied up for a period of time.

In this case, the interim buyers are Don and Jerry Oleson, who provided the capital needed to make the purchase final. Their substantive contribution will protect Timbers Recreation Area from development and preserve it for future public use.

“They never asked for publicity,” says Matt McDonough, director of land protection at Grand Traverse Regional Land Conservancy, of the Olesons. “They are very humble, down-to-earth people.”

Motivated by doing well for their community, folks like the Olesons perform the role of interim buyers relatively quietly and without public recognition, but they make a critical difference in land preservation. Don Oleson said about their interim-buyer role: “Our families have always wanted to give back to the community and we just feel this is another way to do that and also help protect the environment.”

McDonough says that before the real estate crash, preserving land was vital in protecting it from development. “Before 2008, if we didn’t do a deal, homes would go up within a year or two,” says McDonough.

But today, it's more about losing the opportunity to buy property at a historically low cost.

Thus was the case with Timbers Recreation Area; eight years ago, when discussions of conservation options began with the landowners (see next page), it was worth \$6.25 million. By 2012, the appraised value was \$3.2 million, and \$2.7 million became the final purchase price.

Because of the Oleson's philanthropic gesture, community members and visitors will be able to enjoy the Long Lake waterfront at Timbers Recreation Area in a natural setting in perpetuity. With its close proximity to Traverse City—just a 10-minute drive from town—the area has nearly 9,000 feet of water frontage on three lakes, a trail system for hiking and biking, wildlife viewing opportunities, and a kite-flying area.

Along with Timbers Recreation Area, interim buyers have helped the Conservancy to acquire \$4.4 million of land, including the 345-acre Glacial Hills Pathway and Natural Area, a 227-acre addition to State Forest land along Hall Creek and a 17-acre addition to the Betsie River State GaOme Area.

The process of using interim buyers is legal, ethical and reflects the Conservancy's entrepreneurial approach to land preservation.

Megan Olds, associate director of Grand Traverse Regional Land Conservancy, calls this money "patient capital," another term for long-term capital.

"We literally can't complete land deals without philanthropists," says Olds.

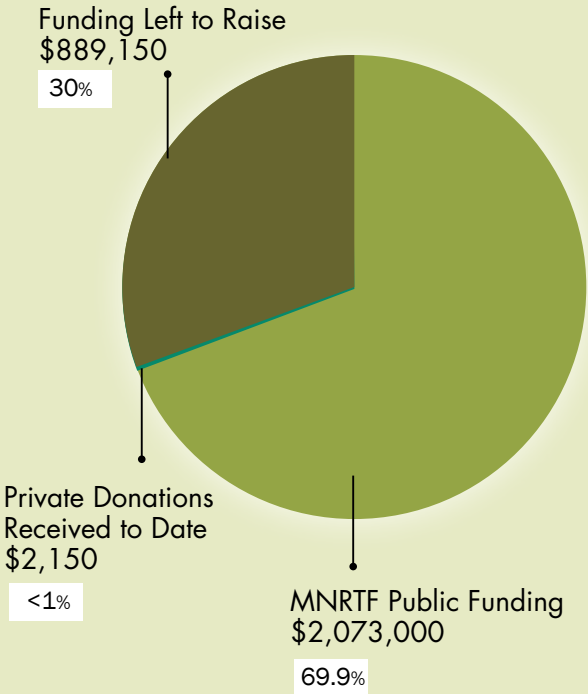
"These interim buyers are willing to step in to give us the patient capital we need to get our work done."

Olds says that the Conservancy's bank of interim buyers is few, "but we'd love to meet more of them."

"Interim buyers feel an affinity for our mission and want to see our natural resources protected," says Olds. "It's a great marriage for us in terms of being able to fulfill our conservation goals and our community goals with their generosity."



TIMBERS RECREATION AREA: PROJECT COST \$2,964,300



TOTAL PROJECT COST	\$ 2,964,300
FUNDING SOURCES	
MNRTF Public Funding	2,073,000
Private Donations Received	2,150
TOTAL REMAINING NEED	\$ 889,150

TIMBERS RECREATION AREA	
DONORS OF \$1-\$1000	
Marilyn Kamp	F Bold entries indicate founding donors who gave their first gift to the Conservancy between June 1, 1991 and December 31, 1992.
Walter & Ingeborg Kramer - F	
John & Bonnie Sebright - F	
Charles & Ann Weitz - F	

EIGHT-YEAR LAND NEGOTIATION COMPLETED WITH AID FROM INTERIM BUYERS

Complex deals that protect land can take years to finalize. Here's a summary of how the Timbers Recreation Area deal unfolded:

2004-2008

Eight years ago, Grand Traverse Regional Land Conservancy entered into conservation easement negotiations for Timbers Girl Scout Camp with the owners, Fair Winds Girl Scouts Council. After three years, negotiations fizzled out (a feasibility study indicated that the conservancy could not raise the needed funds because the easement would not allow for public access). The Conservancy, however, agreed to continue looking for ways to protect the property.

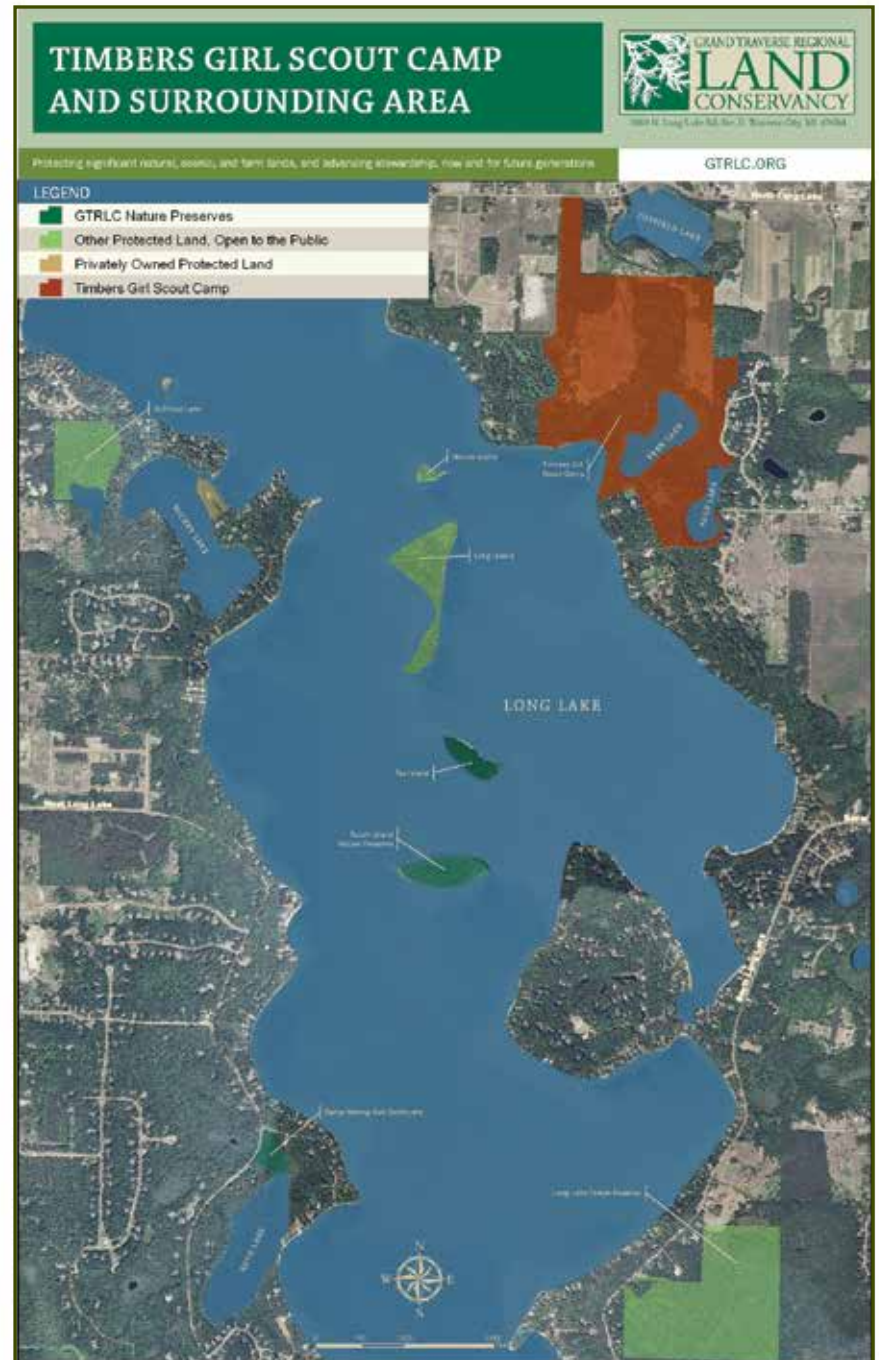
2008-2011

Meanwhile, the pressure to liquidate the property increased for the Girl Scouts as the Fair Winds Council was consolidated with a larger Council in Detroit. As an interim measure, Grand Traverse Regional Land Conservancy held the option to buy the camp property for one year at a cost of \$35,000. The year passed, and, still unable to find a suitable partner for the land, the Conservancy let go of its option to buy, unable to raise the money to purchase the property and determining it was not a good budgetary risk to pay another year to hold the land. Still, the Conservancy continued searching out potential partners in hopes that the land would not be sold privately for development.

2011-2012

Eventually, the Conservancy started discussions with Long Lake Township, which agreed to apply with the assistance of the Conservancy for a Michigan Natural Resources Trust Fund grant of more than \$2 million to purchase the land. While the Timbers Recreation Area grant award was announced on December 5, 2012, the funds will take up to 18 months to reach Grand Traverse County. The Conservancy has until June 2014 to raise \$891,300 in matching funds, a requirement of the grant funding.

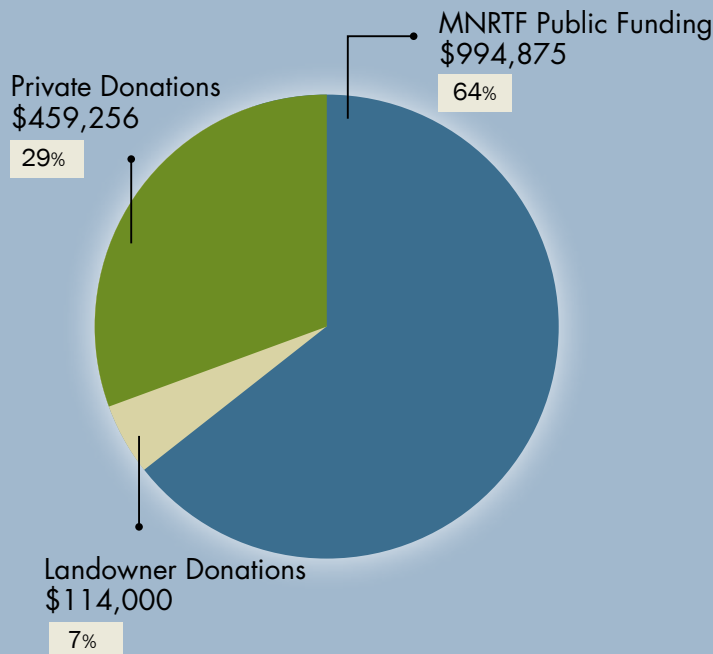
Unfortunately, the Girl Scouts were not in a position to hold the land for another 18 months. In a deal carefully constructed and negotiated by Grand Traverse Regional Land Conservancy, interim buyers purchased the land for \$2.7 million from the Girl Scouts. When the grant funds arrive and the match money is raised, the interim buyers' "loan" will be repaid.



YOU PROTECTED ANOTHER 200 ACRES AT RAILROAD POINT!

It took years of conversations with landowners and friends, a Michigan Natural Resources Trust Fund grant and 101 private donations, and together we've done it. The expansion of the Railroad Point Natural Area is complete! We are so grateful for the support received to make this vision a reality. Watch the events section of our website, www.gtrlc.org, for the announcement of a summer celebration of this significant success!

RAILROAD POINT EXPANSION: PROJECT COST \$1,560,057



FUNDING SOURCES

MNRTF Public Funding	\$	994,875
Landowner Donations		114,000
Private Donations		459,256

TOTAL RECEIVED **\$ 1,568,131**

2012 RAILROAD POINT EXPANSION DONORS

DONORS OF \$5,000 OR MORE

Anonymous (1)
The Michael & Nancy
Burgermeister Family Fund
The Frey Foundation
Walter H. Johnson - VS
Marcia Lee

\$1,000 - \$4,999

Larry & Susan Burks - F
Elisabeth W. Case &
Douglass C. North - F
Thomas A. Getz & Margaret
Burrows-Getz - F
Barry & Helga Hibben
Jerry & Pat Jehle - F
Charlie & Linda Kehr - F
Dick & Linda Lewis
Pete Meyer & Elisabeth
Del Buono
Bill & Joan Olsen - F

\$500 - \$999

Ronald & Michelle Edwards - F
Mary Jane Meier
Jane A. Purkis - F
Jeri Rosenberg & Victor Strecher
Suzanne J. Voltz - F, VS
Richard & Monica Zillich - F

\$1 - \$499

Doug Bard - F
Bowerman, Bowden, Ford, Clulo
& Luyt, PC
Edward & Leslie Butt
Sally E. Casey
Stacy & Carol Daniels - F
Roger & Helen Dewey - F
Marian Doane
Charles Fahlgren & Kay Harley
Mary C. Ferens
Anita Goor
Jerry & Jamie Heim - F
Laurel Heywood
Sharon Hillquist
Michael & Lesa Huget
Barbara Johnson
Chuck & Judy Kraus
Will & Barbara Lynch
Brian & Lori Meek
Philip & Heidi Pandolfi
Kathleen Peters
George Petritz - F
Scott & Jennifer Rodes
Terry & Robbi Rogers
Donald Sagaser - F
Dan & Janice Schoonmaker
Amy & Clark B. Shuler - F
Donald & Linda Smith
Gary Ward - F
Jacqueline Wilkosz
Frank & Lauren Zinn

- F** **Bold** entries indicate founding donors who gave their first gift to the Conservancy between June 1, 1991 and December 31, 1992.
- LC** Indicates donor is a Land Champion, making monthly gifts to the Conservancy.
- VS** Indicates donor is a member of the Vanguard Society and has made a planned or estate gift to the Conservancy.



PHOTO BY TED CLINE

ORIGINS OF RAILROAD POINT

By Heather Shumaker

LAND PROTECTION

Dick Lewis gathered his children and grandchildren together. It was August. One of those brilliant blue Crystal Lake summer days. He had asked Glen Chown to talk to his family and Nancy Brickman agreed to host. So here was Glen amid a roomful of Lewises in the Brickmans' living room, all listening to the story of how their mother (and grandmother) had been an early hero in creating Railroad Point Natural Area.

The story began when Rusty Lewis first called Glen back in 1996.

"Did you hear?" Rusty asked. "There's a plan to develop Railroad Point. We've got to do something about this."

Glen was all ears. He had met Rusty at one of Nancy Brickman's dinner parties. These parties (and after-dinner owl-hooting trips) helped welcome the Conservancy to Benzie County. Now here was an opportunity to do something marvelous for Benzie County in return. Railroad Point was 66 acres of wild land right on the shore of Crystal Lake located next to the beloved outlet creek. Woods, bluff and sparkling blue shoreline. One of Crystal's very last large parcels.

Although the Conservancy was just 5 years old, Glen had already completed 80 projects and knew what to do. If only he could gain the trust of the landowner.

It was Rusty who introduced Glen to Ingrid Devine, who owned the property with her daughter, Bettina Appelhof. It was also Rusty who spearheaded support from the Crystal Lake Association and rallied friends on Crystal Lake to give more than \$300,000 to Railroad Point.

"You've got to call Ingrid," Rusty said in the beginning.

"She's not going to know me from Adam," said Glen.

"I've already talked to her and she knows you'll be calling," answered Rusty. "You know what to do. The Crystal Lake Association will support you and so will I."

With Rusty paving the way, Glen soon gained Ingrid's trust.

"I was glad to hear that you have a very definite and strong appreciation for the beauty of Crystal Lake," Glen wrote in his first letter to Ingrid. By the end of the year, Ingrid and her daughter agreed to sell the land for a discounted price. The Devine-Appelhof family would

donate \$700,000 in land value and give the Conservancy two years to raise the rest of the money.

It was a chance. A chance to show collective love for Crystal Lake.

Tale of the Lucky Buck Rub

Land on Crystal Lake wasn't cheap—especially land with so much shoreline. The new Railroad Point project had 1/3 mile of Crystal Lake shoreline. Even with the landowners' generous donation, the price tag was likely to be north of \$2 million. Glen knew Railroad Point needed more partners.

What if Benzie County itself owned the land? Counties could apply for state grants like the Michigan Natural Resources Trust Fund. With all the public access benefits, gorgeous views and extensive shoreline, a project like Railroad Point was sure to be a shoo-in for a Trust Fund grant.

Benzie County did not own any natural areas, but thanks to Conservancy supporters Wally Edwards, Jim MacInnes and Jim Sheets, the idea caught fire. By October 1996, county officials voted unanimously to support Railroad Point.

With great local support, Glen submitted the grant to Lansing. Then the phone rang and his dreams threatened to crash.

It was Keith Charters, one of the Trust Fund's board members.

"Glen, the scoring doesn't look good for Railroad Point."

"What?" said Glen.

"You didn't get any points for wildlife values." said Keith.

"What?!"

"Zero. No points."

"Keith, we need to show you this property."

A few days later Glen led Keith Charters out on Railroad Point for a bluff hike. Glen marched ahead, extolling the beauty of the bluff's lake views. His goal was to wow Keith with the sweeping view of Crystal Lake. But Keith dropped behind. He wasn't listening to Glen. He was bending over a maple sapling.

"Glen! Do you know what this is?" asked Keith.

Glen looked at the sapling. Its bark was scraggly and hanging in strips.

"A ripped up shrub?" he hazarded.

"That's a buck rub," said Keith. Deer habitat. "Take a picture of that and send it to Lansing."

With clear wildlife evidence, the Trust Fund boosted the

score and awarded Railroad Point \$2.1 million.

"That was our \$2.1 million buck rub!" Glen laughed.

He hung the buck rub photo on his wall. In late 1998 the first purchase of 66 acres was complete, thanks to the Trust Fund, Crystal Lake families (who contributed \$300,000) and a young buck.

Railroad Point Today

What began in the 1990s with Rusty Lewis's phone call and the lucky buck rub blossomed into a multi-year, multi-phase project involving hundreds of people.

Benzie County celebrated the birth of Railroad Point Natural Area in August 1999. Up on the bluff, the Conservancy staged a party, complete with ribbon-cutting and champagne toasts. But the story of preserving Railroad Point had just begun.

Even before Benzie County finished buying the first 66 acres of Railroad Point, an opportunity came up to expand the natural area. Soon Glen and Benzie County friends were seeking a second Trust Fund grant to add five critical acres and 400 feet of shoreline. That was Phase II.

"The hallmark of land trusts is our ability to act decisively and quickly," said Glen.

Quick action defines the Conservancy, but so does endless patience.

A decade later, Railroad Point moved into Phase III of its land protection journey. Several landowners who owned land surrounded by the natural area were ready to sell in 2011, after years of quiet talks. The effort required a brand-new million-dollar Trust Fund grant plus \$451,000 of local fundraising. But it was worth it. Now there's a new, grander Railroad Point. One that more than doubles the acreage. The new preservation adds wetlands and Betsie River shoreline, and provides a wildlife corridor between Crystal Lake and the Wild-Scenic Betsie River.

Years ago, who could have guessed that Railroad Point Natural Area would someday encompass more than 200 acres?

The hard work of Phase III is now complete. It's time to celebrate. This spring the Conservancy will transfer the new natural-area land to Benzie County, to join the original acreage. But even though the Conservancy's role brokering the land deals is done, it will continue to partner with the County and write a management plan. Again, it's the right partnership. Safeguarding Railroad Point has always been the goal. Stewardship of the land—and our thanks to those who created Railroad Point Natural Area—go on forever.

ARCADIA, WHERE LIFE MEETS WATER



The goal of partners is to make Arcadia a world class destination by creating a network of recreational opportunities that provide access for people of all needs and abilities to recreate and enjoy Arcadia's truly unique natural resources: the dunes, Lake Michigan shoreline, marsh, wetlands, inland lakes and tributaries, and existing amenities, such as the municipal marina and private tourism-based businesses.

1 ARCADIA BEACH SUNSET STATION



A current Explore the Shores site, continued improvements at the Arcadia Beach/Sunset Station will improve beach and viewing access, and provide universal access. Additional improvements to the restrooms and playground areas will further enhance this pristine public recreation area.

2 PROPOSED NON-MOTORIZED PATHWAY



Arcadia's recreation and business amenities would be easily reached via a proposed non-motorized pathway. Multi-use trail systems are found at nearby public lands and provide another reason to visit or live in Arcadia.



3 GREBE PARK VETERANS MEMORIAL MARINA

Previous investments in Grebe Park/Veterans Memorial Marina make it a natural fit as an Explore the Shores site. Additional planned improvements include a universally accessible canoe/kayak launch, fish cleaning station, permanent concrete vault bathroom facilities, improvements to handrails on the fishing pier and sidewalks.





6 ARCADIA DUNES: THE C.S. MOTT NATURE PRESERVE



An Explore the Shores universally accessible path will take visitors to coastal views at the Grand Traverse Regional Land Conservancy's preserve. Additional infrastructure improvements include educational and interpretive signs and benches. This will be one of the first such trails incorporating universal design within a Great Lakes dune complex.

5 ARCADIA MARSH NATURE PRESERVE



Another of the Grand Traverse Regional Land Conservancy Preserve's, Arcadia Marsh is a potential future Explore the Shores project site. Discussions are currently underway to develop access to provide opportunities for people of all ages, needs and abilities to birdwatch, fish, explore and learn about the Marsh.

4 PLEASANT VALLEY COMMUNITY CENTER

A portion of the Center will be converted into an "unmanned" welcome station to the system of Arcadia Explore the Shores locations. Maps, information about recreational uses and opportunities, educational and historical information about the sites and Arcadia will be available at the Center, making it a great jumping off point for the integrated system of Arcadia Explore the Shores sites.



COMMUNITY INVESTMENT

We are working in tandem with community partners to appropriately conserve our community's lands and waters and also harness their potential as economic assets. The natural features in our State are part of what makes our communities unique, however we have to work together to steward and invest in them in order to preserve or restore what makes them special, create access, and feature them as catalysts for economic growth.



ARCADIA EXPLORE THE SHORES

DONORS OF \$10,000 OR MORE

*Ferris Greeney Family
Foundation
Blair & Gordon Jones*

\$500 - \$999

*Arcadia Lions Club
Shirley & Jerry Niemi
Barbara Randall*

\$1 - \$499

*Ross and Kim Winchell
Cleo Zalik*

ARCADIA MARSH

DONORS OF \$500 - \$2,499

*Ken & Lois Breimeier
Lois Haertel
Norm & Sue Ulbrich*

\$1 - \$499

*Carolyn Blum
Thomas G. & Lisa R.
Krikke
Amy Lewarchik
John & Lynn Steben*

RECLAMATION OF GREAT LAKES VIEWS ALONG A WELL-TRAVELED ROAD CORRIDOR

Acme's Bayside Park is a multi-phased project with a vision to create a mile-long shoreline park along US-31 and the Grand Traverse Bay. The park will provide access to nature and recreate, and create scenic views along a well-traveled road corridor.

The first two phases of this project have included unique outcomes including:

- The acquisition of aging and blighted structures along the Grand Traverse Bay
- A "green" focus on the deconstruction of aging buildings on the site of the Phase 1 properties
- The creation of new public open space, beaches, and parkland along the Bay
- The reclamation of Great Lakes views for travelers along US-31
- Efforts by the Acme Heritage Society to relocate and restore the historic Hoxie House
- Efforts by The Watershed Center and the Township to develop Low Impact Design plans for the park's future development, which will help to preserve water quality in the Bay

Now in Phase 3, the Conservancy and the many partners working to implement a shared vision for this park will:

- Acquire two additional properties with aging and blighted buildings
- Deconstruct aging and blighted buildings, recycling and reusing as much material as possible
- Continue to evaluate Low Impact Design plans for park improvements that preserve and protect water quality and biodiversity while enhancing access to nature and recreation
- Explore opportunities to create better and safer pedestrian and bike access to the park and to nearby businesses in collaboration with private landowners and businesses, TART Trails Inc., the Township, and the MI Department of Transportation
- Focus on corridor Placemaking, with this park as a catalyst

To learn more about Acme's Bayside Park, please contact Megan Olds at 231-929-7911 or via email, molds@gtrlc.org

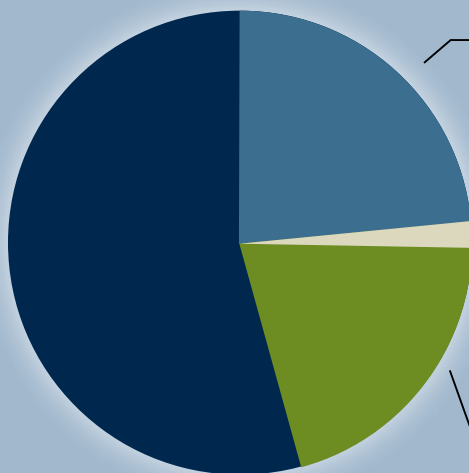


ACME PHASE 3: PROJECT COST \$1,655,650

FUNDING SOURCES

Funding Left to Raise
\$913,211

55%



Michigan Natural Resources Trust Fund-Public Funding
\$379,238

23%

State Blight Elimination Grant-Public Funding
\$44,000

3%

Private Donations Received or Pledged
\$319,201

19%

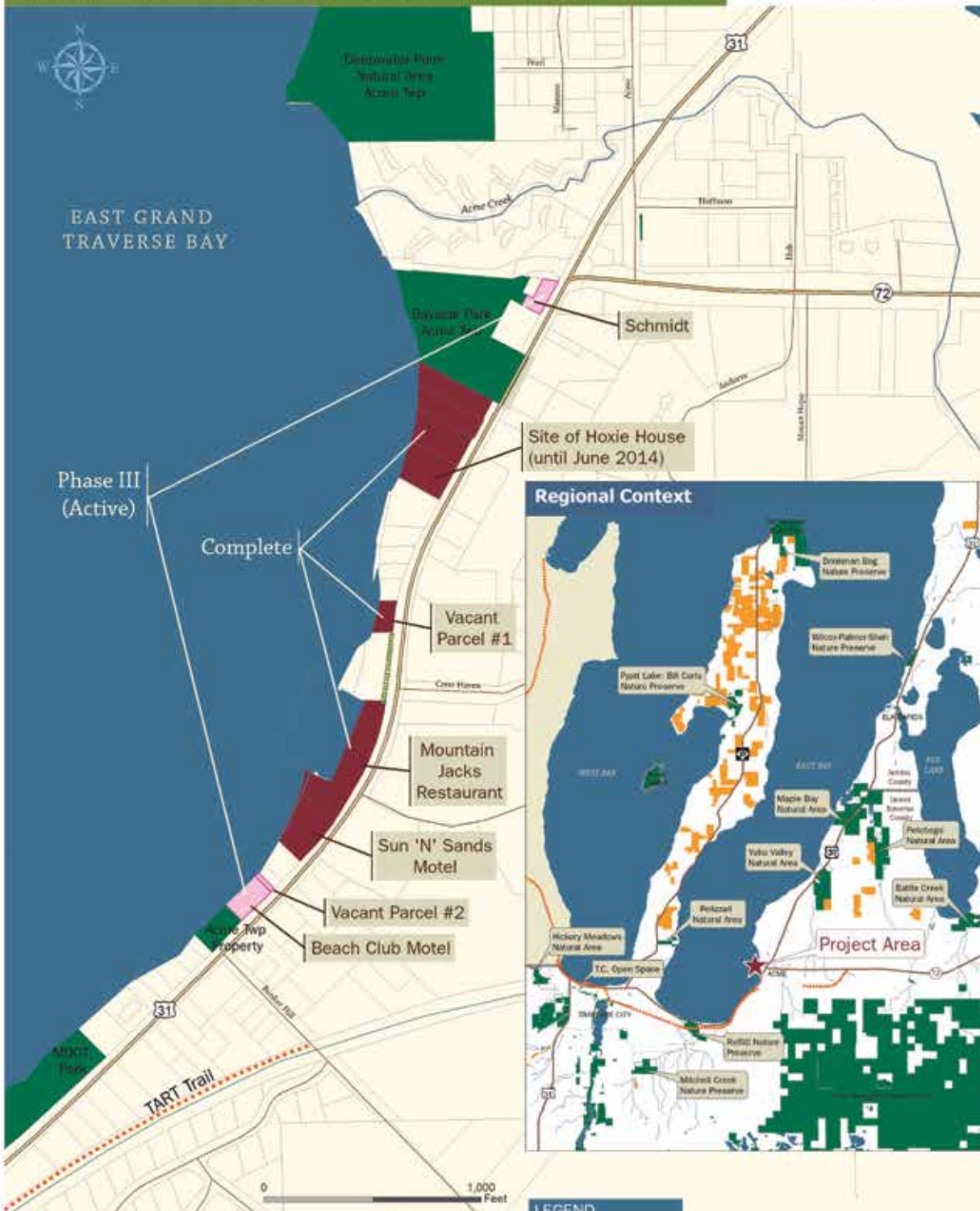


ACME SHORELINE BAYSIDE PARK



Protecting significant natural, scenic, and farm lands, and advancing stewardship, now and for future generations

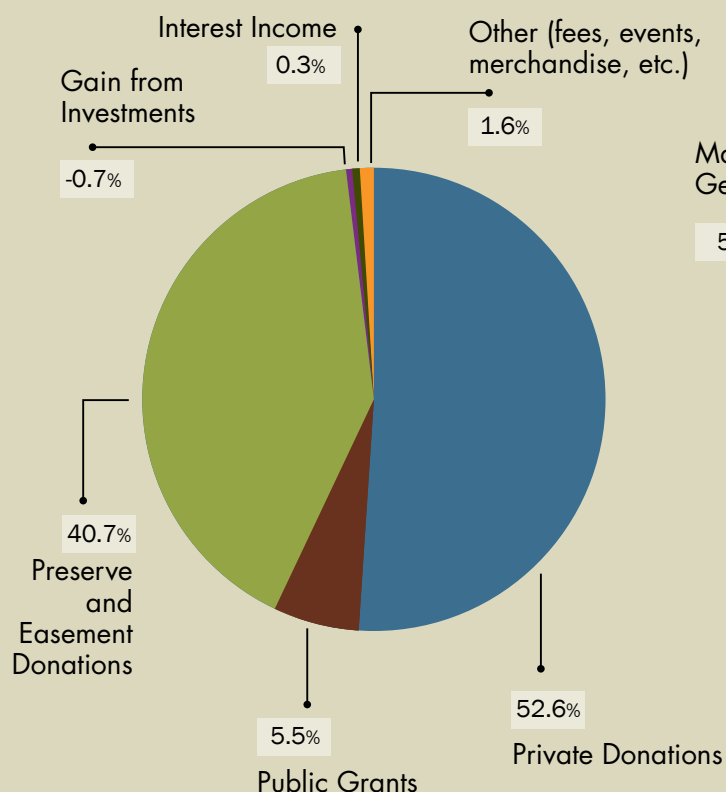
GTRLC.ORG



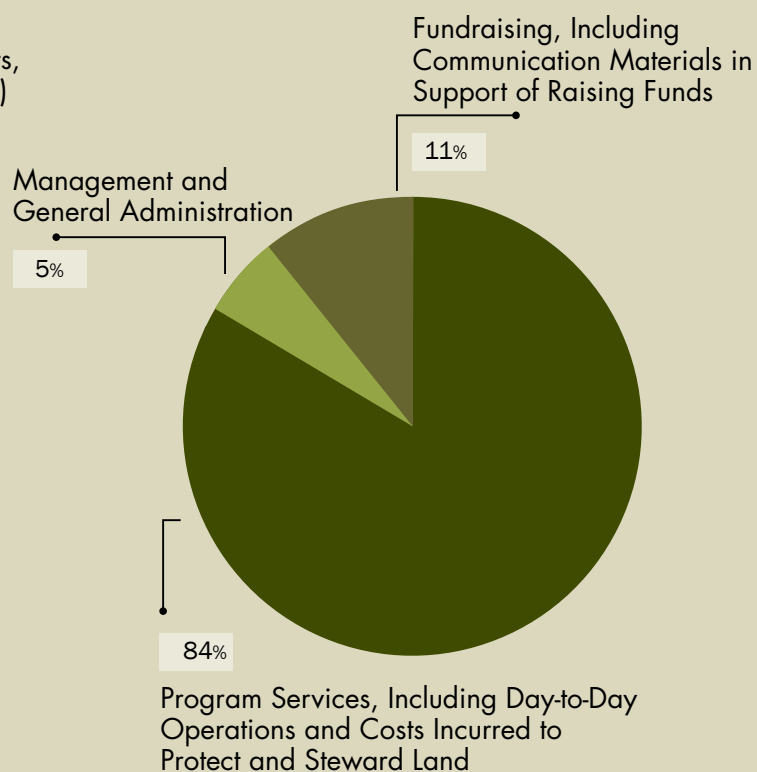
LEGEND	
	Acme Phase III (Active)
	Acme Project Phase I and II (Complete)
	Protected Farmland and Natural Lands-Privately Owned
	Protected Land Open to the Public
	TART Trail
	Trail Easement



GTRLC REVENUES



GTRLC EXPENSES



GTRLC CONSOLIDATED STATEMENT OF ACTIVITIES FOR THE FISCAL YEAR ENDED JUNE 30, 2012

	UNRESTRICTED	TEMPORARILY UNRESTRICTED	PERMANENTLY UNRESTRICTED	TOTAL
REVENUE AND SUPPORT				
Private Donations	\$ 1,323,274	\$ 2,311,182	\$ 50	\$ 3,634,506
Public Grants	172,021	204,496		376,517
Preserve & Easement Donations		2,809,500		2,809,500
Gain From Investments	(17,441)	(29,021)		(46,462)
Interest Income	5,615	15,382		20,997
Other (fees, events, merchandise, etc.)	48,064	64,254		112,318
Net Assets Released from Restriction	3,740,810	(3,740,810)		
Liens Released on Nature Preserves		(2,093,609)	2,093,609	
<i>Total Revenue and Support</i>	<u>5,272,343</u>	<u>(458,626)</u>	<u>2,093,659</u>	<u>6,907,376</u>
EXPENSES				
Program Services, Including Day-to-Day Operations and Costs Incurred to Protect and Steward Land	4,633,943			4,633,943
Management and General Administration	305,136			305,136
Fundraising, Including Communication Materials in Support of Raising Funds	587,683			587,683
<i>Total Expenses</i>	<u>5,526,762</u>			<u>5,526,762</u>
CHANGES IN NET ASSETS	(254,419)	(458,626)	2,093,659	1,380,614
NET ASSETS, Beginning of Year	3,944,552	11,190,930	15,282,605	30,418,087
NET ASSETS, End of Year	<u>\$ 3,690,133</u>	<u>\$ 10,732,304</u>	<u>\$ 17,376,264</u>	<u>\$ 31,798,701</u>

The Heart of the Matter

When we each think back to special times in our lives, our memories are often inextricably linked with a place. We may wonder, if we go back today, will it look and feel the same? Will our future generations be able to experience it like we did? Is it a “forever” place?

For the past twenty-two years GTRLC has been supported by donors who value our mission. We listen when you tell us about the places you care deeply about. We take action and make choices on how we can best use the resources we have been given to protect them. We have a sense of achievement and are grateful knowing that together we made this happen.

One thing we know is that not all things stay the same. Not everything should, but the singular lands we love are an exception. And as we look forward, we understand the ability to watch over these places won’t happen on its own—it takes planning and action.

Thanks to the progressive thinking of supporters who have made planned gifts or endowment gifts, GTRLC has invested over \$10 million in a variety of long-term funds (see below). Not bad for an organization our age. However, in order to make good on our perpetual responsibility to steward lands we have protected, our staff and board of directors are now prioritizing the growth and investments in our Stewardship Endowment Fund. We are measuring our responsibilities. We are setting timelines. We are funding the responsibilities we’ve taken on.

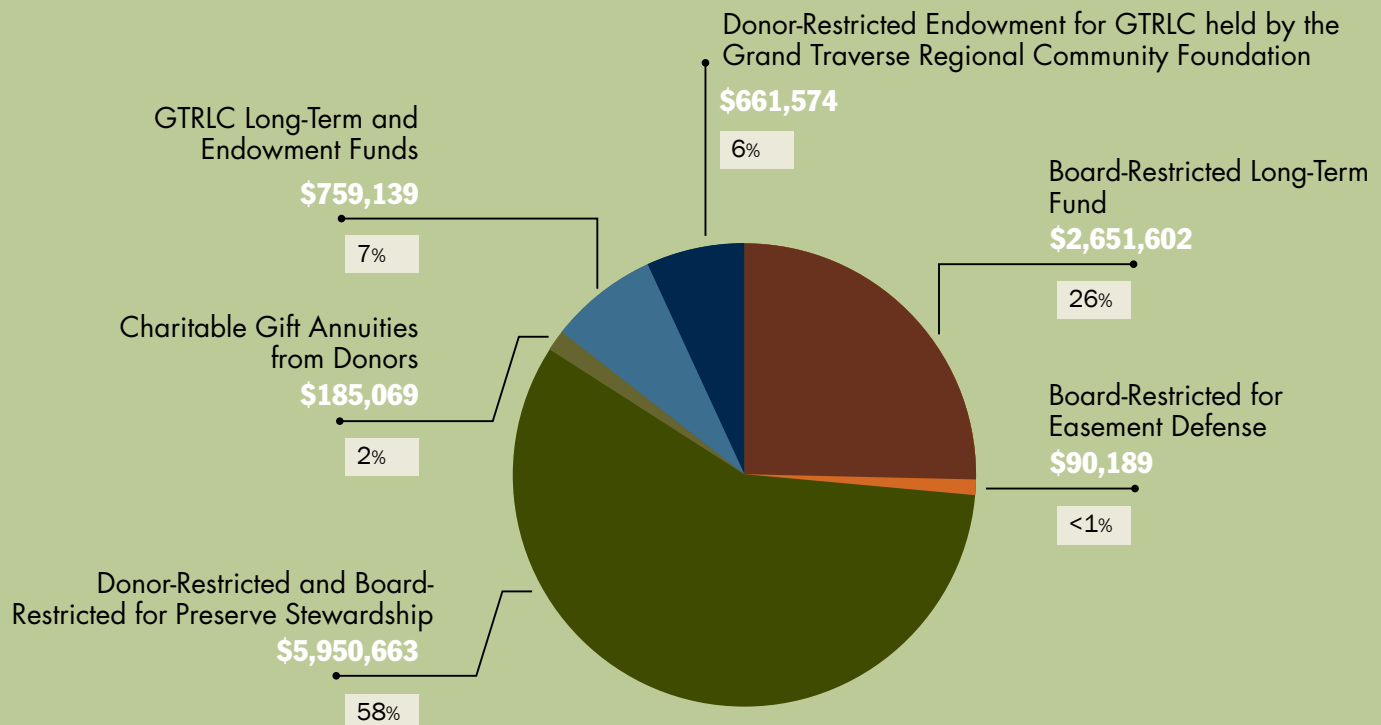
Your generous gifts protected the places you care deeply about. We are making certain that we enshrine those properties in a cloak of security.

Please join us in supporting the Stewardship Endowment Fund. Our ongoing commitment is to keep your forever place, forever.

~ Diane VanderVeen, Chair, GTRLC Board of Directors

GTRLC LONG-TERM & ENDOWMENT FUNDS

GTRLC has over \$10 million in long-term and endowment funds. Some of the funds are donor-restricted and help support the ongoing stewardship of easements and preserves.



GRAND TRAVERSE REGIONAL LAND CONSERVANCY



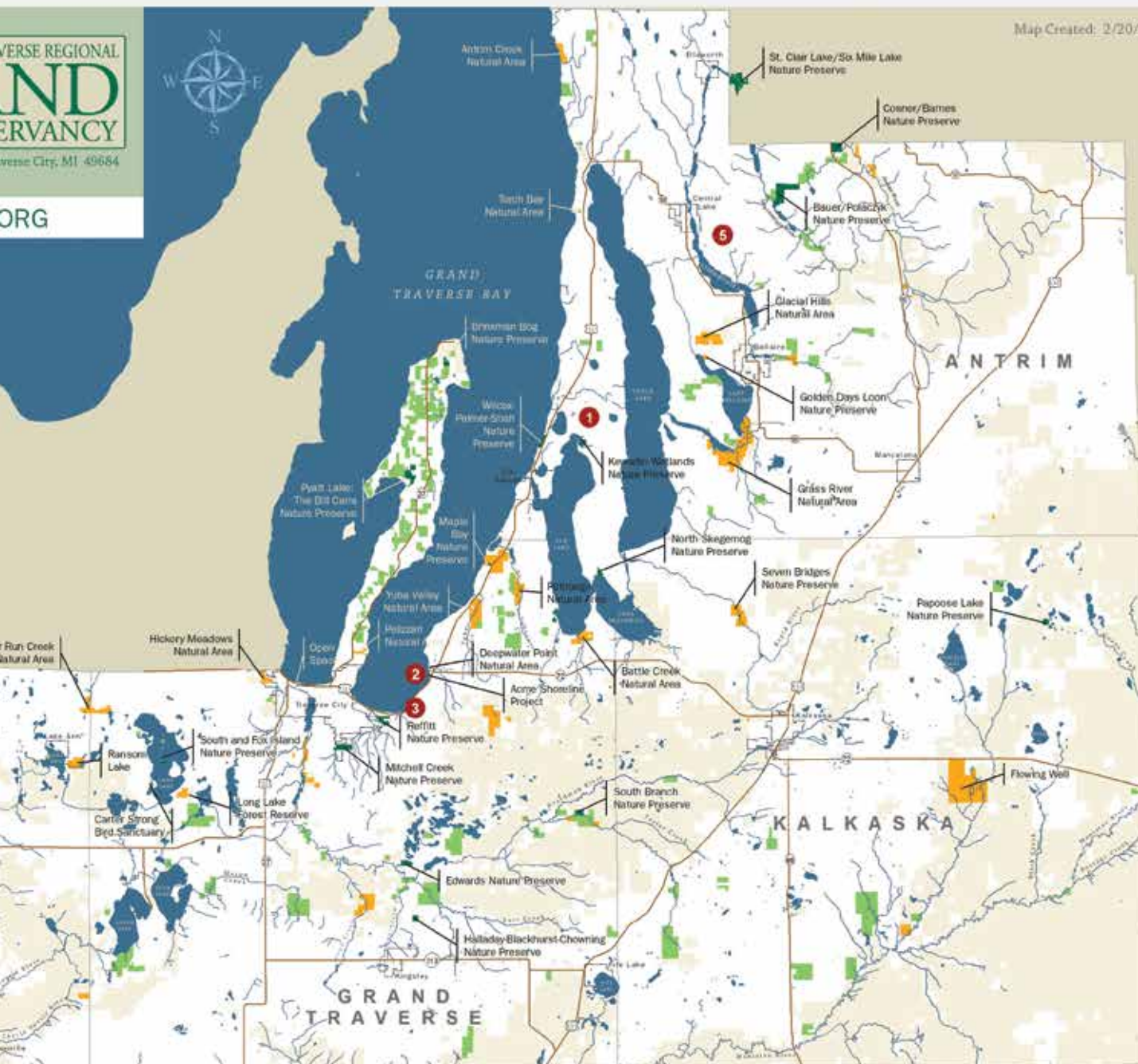
Protecting significant natural, scenic, and farm lands, and advancing stewardship, now and for future generations

GTRLC.

The Grand Traverse Regional Land Conservancy made strong advances in 2012 toward its mission of protecting significant natural, scenic, and farm lands, and advancing stewardship, now and for future generations. Fourteen properties totaling 766.71 acres featuring more than a mile of shoreline were permanently protected in 2012.

- 1** Farming supports our economy, our quality of life and our regional heritage. It also sustains families with close ties to the land. In 2012 we worked with local farmers to permanently protect over 400 acres of working farm land. In 2013 we will launch FarmAbility, a new program designed to temporarily protect farmland, while benefiting farm families economically and by helping them plan for the future of their farm. See pages 8 & 9 for details.
- 2** Progress continued along the Acme shoreline in 2012 with the purchase of the Sun 'N Sands Motel, adding another 250 feet of East Bay shoreline to Acme's Bayside Park expansion. This multi-phased, multi-year effort includes the purchase of land from willing sellers, the deconstruction of aging and blighted structures, the development of new park amenities, and the creation of a park endowment for the proposed mile-long shoreline park.
- 3** The George and Ada Reffitt Nature Preserve in Traverse City was expanded by more than 20 acres thanks to two generous landowner neighbors. This will allow for greater trail and hiking opportunities. Reffitt, which is adjacent to the Traverse City State Park and the TART trail, now boasts over 100 acres of land and is a quiet, urban hiking destination offering a host of wildlife species and distinctive plant life.
- 4** Two generous donations protected important lands adjacent to existing Nature Preserves: Nana's Woods Sanctuary, next to the Elizabeth Parr Nature Preserve, and the John Helstrom Quiet Area neighboring Misty Acres: The Borwell Preserve.
- 5** Nearly half of our protected land is privately owned property with a conservation easement. Landowners have a deep connection to their land and know the benefits undeveloped properties provide their communities: clean air and water, fresh food, wildlife habitat, and scenic beauty. In 2012, 300 acres of land were protected in this manner. 2013 sees our work continue with the added benefit of a substantial grant from the Environmental Protection Agency to focus on properties in the vital Chain of Lakes region.





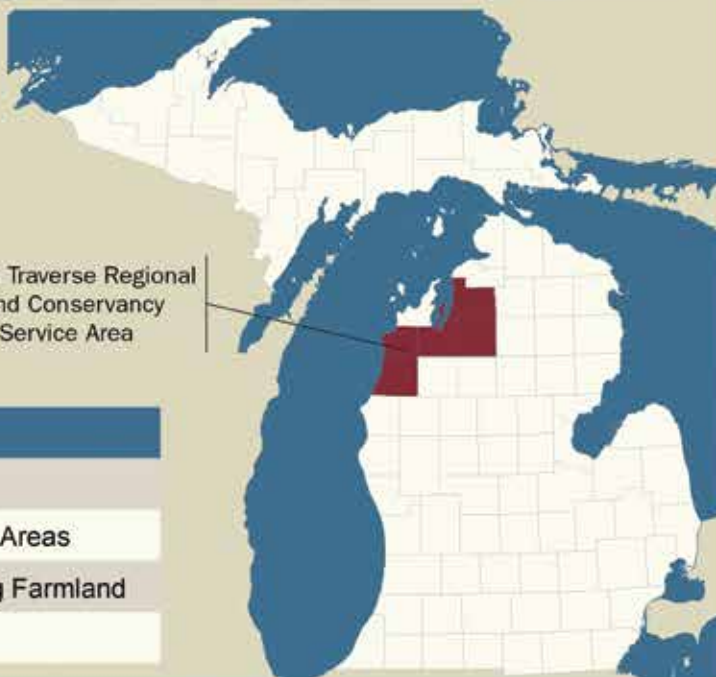
Total lands protected
through 2012 in the GTRLC
service area of Antrim, Benzie,
Grand Traverse, Kalkaska, and
Manistee Counties

36,275 acres
More than 114 miles of shoreline

LEGEND

- GTRLC Nature Preserves
- GTRLC Protected Public Parks & Natural Areas
- Privately Owned Protected Land Including Farmland
- Other Protected Land

Grand Traverse Regional
Land Conservancy
Service Area



PRIVATE LAND PROTECTION

While the parks and nature preserves we protect are open to and enjoyed by the public, another 17,139 acres of the land which we have permanently protected are located on private properties whose owners have generously granted conservation easements. We monitor these properties annually, often hand-in-hand with the land owners, to answer questions, and to ensure that conservation value—the health and wealth of these precious lands—are maintained forever. We extend our heartfelt gratitude to the following land owners for their support.

Acme Township	Cherry Ridge Farms	Robert & Pam Flewelling	John & Mary Lane
Robert & Meredith Amon	City of Traverse City	Chip & Terrie Frey	Bruce & Joanne Langlois
Antrim County	Richard Cooper & Jan Tennant	G.D.O. Investments	Cliff Larkins
Claudia & Vernon Bailey	Terry & Gretchen Cox	John R. Gehring	Gary & Larry Lathwell
Baillio Company	Croft LLC	Gene Gerring & Lois Szumera	Janice Lessard
Andy & Eunice Barbera	Crystal Highlands Orchards Inc	Gordon Gienow	Joe & Kathy Lessard
Mark & Karen Barbera	D.E.E.R.	Judy Gienow - F	Karyl R. Lessard
Robert & Gail Barnes	Lois Brennan & James Dalley	Ron & Diane Gillison	Long Lake Township
Joyce Bash	Alice & Jerry Deck	Stephen & Margery Goodale	Calvin Lutz
Bash Enterprises	G. Michael & Barbara DeGraeve - F	James & Sharon Goodheart	T. Grace Macdonald - F
Thomas & Ardis Bauer	Woody & Katie Derrohn	Charles & Bethany Goodman	Helen MacMillan
Bay Harbor III LLC	Michael & Teckla Dettmer - F	Grand Traverse Commons	Bob & Kris North Mampe
Bayshore Real Estate Associates #1 - F	Development Engineering	Great Lakes Fishery Trust	Kimberly Mampe
Leon & Shirley Beal	Harold & Edna DeYoung	Estate of Anthony Grybok	Robert & Lois Manigold - F
Bill & Marti Beals	Charles DeYoung	GT Commons Redevelopment Corp.	Francia Mann
Michael & Leah Bell	Nancy Dickinson - F	Donald M. & Heidi L. Hamilton	Clarissa Price Marckwald - F
Kathleen & Otto Belovich	J. Bennett & Tauna Donaldson - F	Thomas & Beverly Hanna	The Marckwald Family
Robert & Barbara Below - F	Jeanette M. Dowd	Alan & Carol Hart	Dirk & Mary Martin
Benzie County Government Center	Deborah Doyle	John & Charlene Heim	William & Joan McCool
Fred J. Beveridge	Dorothy D. Dunlap - F	Jed & Dawn Hemming	Pat & Sarah McGuire
John R. Blakeslee	Roger & Angelica Dunlap	David & Barbara Henton	McGuire Real Estate Company LLC
Mrs. Rhoda Bolton	Julie Dutton	Russell & Carolyn Herschler	William F. McKinley
Rudrick & Mary Ellen Boucher	Martin Easling	Jane D. Highsaw - F	Amy & Dan Meyer
Joan T. Brace	Roger A. Easling	Frances Housman	Jean J. Meyer
Brenda Brooks - F	Arthur & Marion Eberhardt	Russell & Kay L. Hughes	Philip & Connie Micklin
Judy Grace Wilkerson Brooks - F	Kenneth Edwards	Warren Ilchman - F	Kelly & Debra Miller
Richmond & Lee Brown - F	Phil Edwards & Laura Reid	Alice A. Jeffers	Philip Miner
James & Justine Buck	Ralph & Mary Ellen Edwards	David & Nancy Jones	William & Rosemary Moors - F
Dan & Nancy W. Capps - F	Susan Edwards	Stephen & Karen Jones - F	Mary-Slade Morrison
Pat Capps - F	Frank J. O. Elliott	Patrick & Christine Kelley	Sladie Morrison - F
Stephen & Karen Capps - F	Jeanette Shambaugh Elliott - F	Ellen C. Kelso	Brownson & Betty Jean Murray
Wanda Capps - F	Jeff Elliott	Marie J. Kladzyk	Joel R. Myler
Archibald Carey - F	Bethany Engle	Jane Klotzbach	NANSUCA Inc.
Archibald Carey III	Kenneth & Janet Engle	Estate of Oscar H. Kraft - F	Nehtawanta Resort Association - F
David & Nancy Carey	Evans Bros. Fruit Co.	Rev. Oscar & Shirley Kraft	Steve & Kathleen Newman
John Carey	Anne Fisher	Steven Kraft & Carol Burns	Philip J. Norrish
Marlene & Terry Caszatt	Harry Fisher	Anthony Kramer & Barbara Bailey - F	Winston A. Norrish
Vernette Cauchy	Julius Fisher	Douglas Kramer	John D. O'Hair
Cedar River Group, LLC	Laura Fisher	Kroupa Family	Leobardo & Carmelita Ocanas
Marshall Champion	Marilyn G. Fisher	Martin & Olivia Lagina	OCS Watervale Ltd.

OHK-SEK
 Peter Ohrnberger
 Brad & Katie Oleson
 Don & Ginny Oleson
The Oleson Foundation - F
 James & Shirley Petrie
Denis & Martha Pierce - F
 Brian Price
 Brian & Dodie Putney
Charlotte Putney - F
 Frank, Bonnie & Adam Putney
 Putney Real Estate Holdings LLC
 Marvin & Jodi Radtke
 Charles & Abby Rammelkamp
 Eric & Joni Rammelkamp
 Julian Rammelkamp
 Theodore & Trudi Rammelkamp
 Ranke Family Partnership
 Ray Ravary & Mary Carlton
 Frank & Doris Rawlings
 Rick & Kay Rieck
 Marty & Debra Ross
 Rotary Camps & Services of
 Traverse City
 Wayne & Joan Rowe
 Ralph & Patricia Rugan
 John & Margaret Sargent
Nancy Seasholes - F
 The Send Brothers
 Lois Serra
 The Serra Family Foundation
 Dave Shaffer
 Rick & Diane Shaffer
 Shaffer Family Partnership
 David & Ingrid Shambaugh
 George & Jaqui Shambaugh
 George & Roberta Shambaugh
George Shambaugh Jr. - F
 Shambaugh Michigan
 Properties LP
 Mr. Gary Shanker
 Michael & Shanna Shea
 Steve & Carol Shuckra - LC
Wayne & Jennifer Simmons - F
 Loring Sims & Edward Smith
 Russell & Kim Sims
 Gregg & Dee Smith

Spindrift Inc.
 Reg Sprik
 William & Patty Springstead
 Eileen G. Sproule
 James & Kristin Steckley
 David Steffey
Donald & Betty Stone - F
David & Sara Taft - F
 The Taft Family
 Terry & Constance Timm
 Dori Turner
 Ralph & Phyllis Turner
 Two Goose Camp LLC
 Sally Van Vleck & Bob Russell

Andrew M. Vander Molen Estate
 Village of Kalkaska
 Andrew & Mary Villov
 Roy & Pamela Volkening
 Frank F. Vyverberg
 Randall Vyverberg
 Melinda Wagner
 Brent & Norma Walton

Gary & Carolyn Waterson
 The Inn at Watervale, Inc
Gloria Whelan - F, VS
 Larry & Nancy Wilson
 Windward Partnership
 John & Charlotte Wuepper
 Shelby Ziegler

- F** Bold entries indicate founding donors who gave their first gift to the Conservancy between June 1, 1991 and December 31, 1992.
- LC** Indicates donor is a Land Champion, making monthly gifts to the Conservancy.
- VS** Indicates donor is a member of the Vanguard Society and has made a planned or estate gift to the Conservancy.

INVESTING IN LAND PROTECTION

The following donors made gifts and/or pledge payments to land protection projects between January 1 and December 31, 2012. Pledge commitments made but not yet received are acknowledged in the year or years when payments are made.

ACME'S BAYSIDE PARK: PHASE 1&2 (COMPLETE) AND PHASE 3 (ACTIVE)

DONORS OF \$5,000 OR MORE

Robert & Kathleen Garvey
James & Debbie Norling- F
 The Shaw & Betty Walker
 Foundation

\$1,000 - \$4,999

George C. Comden
 Kathleen & Mark Guy
Moore W. Peregrine- F
 Jeffrey & Marty A. Watts
 John & Marylou Zaloudek

\$500 - \$999

The Gingras Group
 Arthur & Betty I. Greenlee
 Halliburton Giving Choices
 Linda Wikle & Gail Trill
 John & Angela Willis
 Martha Zahn

\$1 - \$499

Mike & Jo Ann Allen- F
 Barbara Anderson & John
 Romani
 James Bruckbauer
 Don Butkovich Antiques
 Barbara A. Cochrane

Concerned Citizens of Acme
 Township
 Charles & Penelope Curry
 Dorothy Dunville
 Grand Traverse Audubon Club
 Charles & Janet Kibby
 Thomas & Barbara Lyon
 David Miller
 Molly, Curtis and Wendy Myers
 Mike & Nancy Nerbonne
 Carol Pollak
 Christine Varner & Peter Romeo
 Pat & Lyn Salathiel
 Dan & Beth Stainforth
 Gary & Jane Stauffer
 Jerry & Elizabeth Suminski
 Dennis D. Whalen
 William & Elaine Young





PHOTO BY ANGIE LUCAS

ARCADIA DUNES	ELBERTA DUNES SOUTH		US-31 CORRIDOR
<p>DONORS OF \$5,000 OR MORE</p> <p>Thomas H. Cobb - F The Estate of Mike Denny - VS The Wege Foundation - F</p> <p>\$1,000 - \$4,999</p> <p>Carolyn Blum Wally & Jean Edwards - F Alan Flory Bob & Nancy Marshall Scott & Joan Miller</p>	<p>Pfizer Foundation Terrie Taylor & John Robert Williams</p> <p>\$1 - \$499</p> <p>Craig & Jeanette Rohner Thomas & Suzanne Scott Barclay Shultz Dori Turner</p>	<p>DONORS OF \$10,000 OR MORE</p> <p>Anonymous (1)</p>	<p>DONORS OF \$10,000 OR MORE</p> <p>Hamp Family Fund</p> <p>\$1 - \$249</p> <p>Grand Traverse Regional Community Foundation</p>

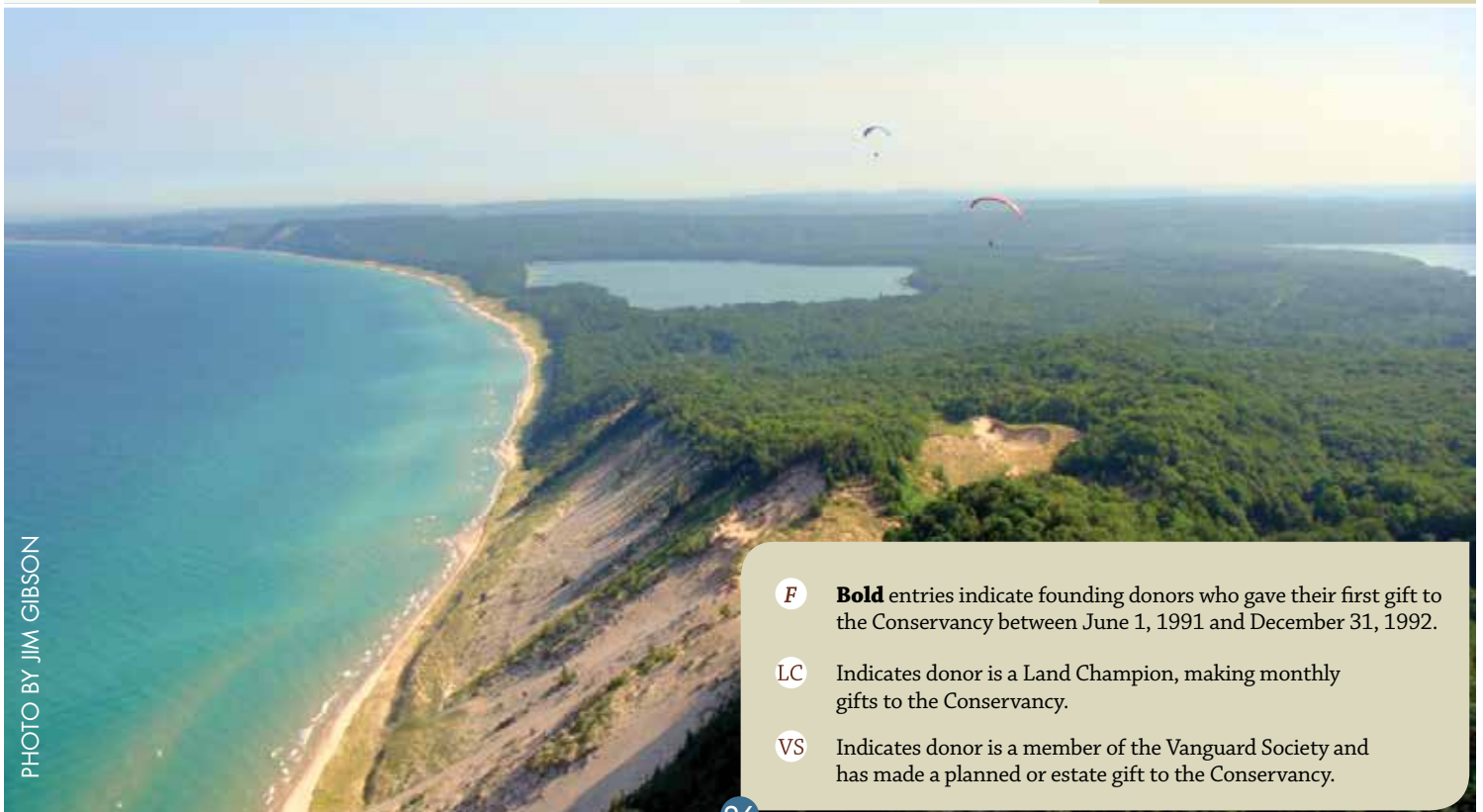


PHOTO BY JIM GIBSON

- F** **Bold** entries indicate founding donors who gave their first gift to the Conservancy between June 1, 1991 and December 31, 1992.
- LC** Indicates donor is a Land Champion, making monthly gifts to the Conservancy.
- VS** Indicates donor is a member of the Vanguard Society and has made a planned or estate gift to the Conservancy.



PHOTO BY DANA VANNOY

STEWARDSHIP ENDOWMENT FUND

In 2012 our Board of Directors established a new restricted endowment fund to provide for the long-term stewardship costs of properties that have been protected by the Grand Traverse Regional Land Conservancy. This fund is intended to ensure that the land you have helped protect is cared for and managed well forever.

DONORS OF \$5,000 OR MORE

Betsy & Stan Dole - F, VS
Brian & Jennifer Jaffe
The Estate of Patricia D.
Robinson - VS

\$1 - \$1000

Jessica Hatch
Charlie & Linda Kehr
Bob & Nancy Marshall
Terry & Robbi Rogers

MAPLE BAY

DONORS OF \$5,000 OR MORE

Anonymous (1)
The Oleson Foundation - F
Royce Ragland & Kenneth
Bloem

\$1 - \$4,999

Anonymous (1)
Keith Baum
Anne E. Brasie - F, LC
K. Ross & Helen Childs
Glen & Rebecca Chown - LC, VS
Lisa Cooley
Graydon & Sherri DeCamp - F
Meredith D. Erickson
Curtis Harriman
Jennifer & Brian Jaffe
Jennifer Jay & Evan Johnstone
Just Like Family LLC
Christie McGue & Robert
Calt - VS



George & Clara McManus
Eileen Milner - F
Megan & Andy Olds - LC
Janet Peckens
Marilyn & Tom Sommerfeldt
Laura Spencer
Terrie Taylor & John Robert
Williams
Robert B. VanDragt & Jackie
Norton
Jay & Judy Zrimec

LAND AND WATERSHED PROTECTION RELATED FUNDS

DONORS OF \$10,000 OR MORE

Anonymous (1)
The Carls Foundation - F
DTE Foundation
Bob & Ruth Fountain

\$1 - \$1,000

Jean Alexander
Allen-Birge Charitable Trust
Michael J. Grusenmeyer - F
The Herrington-Fitch Family
Foundation
Allen I. Janis
Pfizer Foundation

LONG-TERM FUNDS, ENDOWMENTS, ESTATES AND OTHER PLANNED GIFTS

DONORS OF \$10,000 OR MORE

**Estate of Naomi T.
Borwell - F, VS**
Estate of Edith Krause - VS

\$1 - \$1,000

Richard & Patricia Austin
Kenneth & Elizabeth James - F
Charlie & Linda Kehr - F
J. Thomas & Janice Meyer
Sally L. Rodgers - LC
Andrew M. Vander Molen
Estate - VS
Douglas & Marilyn Ueno
Zernow

OLD MISSION PENINSULA LAND PROTECTION

DONORS OF \$10,000 OR MORE

Kathy Polk Osborne
\$500 - \$2,499
Mariel Foundation
The Warrington Foundation

PYATT LAKE - THE BILL CARLS NATURE PRESERVE

DONORS OF \$5,000 OR MORE

Patrick & Carol Conway

PELIZZARI NATURAL AREA

\$1 - \$249

Gary & Janet Baillod - F

KALKASKA CONNECTOR

DONORS OF \$2,500 OR MORE

Iceman Promotions

The Conservancy is either a direct recipient or sub-awardee of grant funding from the following state and federal programs:

Sustain Our Great Lakes (a multi-agency initiative)

USEPA — Great Lakes Restoration Initiative

State of Michigan, Nonpoint Source Pollution Program — Clean Michigan Initiative

U.S. Department of Agriculture, Natural Resource Conservation Service — Wildlife Habitat Improvement Program

U.S. Fish and Wildlife Service — Partners for Fish and Wildlife

State of Michigan, Department of Agriculture and Rural Development

U.S. Department of Agriculture, Natural Resource Conservation Service — Farm and Ranchland Protection Program

The following private foundations have made grant commitments to *Phase 1* of our newly-launched FarmAbility program:

The Carls Foundation

The Frey Foundation

Rotary Charities of Traverse City



VANGUARD SOCIETY

Vanguard Society members are those whose future plans include gifts through their estates, trusts, annuities, insurance policies and other planned giving options.

<i>Anonymous (2)</i>	<i>Tom & Myrna Hitchman</i>
<i>Hal & Kathryn Armstrong</i>	<i>Anne M. Hoffa</i>
<i>Christine Arvidson & Henry Doss</i>	<i>William A. Hyslop</i>
<i>Robert & Nancy Baglan - LC</i>	<i>Harry & June Janis - F</i>
<i>George & Merry Ball - F</i>	<i>Walter H. Johnson</i>
<i>Daniel P. Baumhardt</i>	<i>Kathleen L. Kircher</i>
<i>Thomas Beauvais</i>	<i>Wayne & Ruthanne Kladder - F</i>
<i>Kathleen Carpenter - F</i>	<i>Kima M. Kraimer</i>
<i>Ruth W. Catton</i>	<i>The Estate of Edith A. Krause</i>
<i>Glen & Rebecca Chown* - LC</i>	<i>Wendy MacGaw</i>
<i>Bob & Cindy Clement</i>	<i>Rosemary Malocsay</i>
<i>Jane R. Comings</i>	<i>Barbara Manning - F</i>
<i>Bonnie Craig & Dan Sylvester</i>	<i>Josephine "Jody" Marquis - F, LC</i>
<i>Karen & Ronald Culp</i>	<i>Diane McDonald</i>
<i>Robert & Arlene Dean - F</i>	<i>Christie McGue & Robert Calt</i>
<i>Jock & Sue Denio</i>	<i>Shirley McNally - F</i>
<i>The Estate of Mike Dennon</i>	<i>Harriet Miller-Brown & Keith Miller</i>
<i>Alice J. Detzler</i>	<i>Robert & Joyce Mims</i>
<i>Betsy & Stan Dole - F</i>	<i>Elizabeth S. Mitchell - F</i>
<i>Diane L. Dupuis*</i>	<i>John & Nancy Morrison - F</i>
<i>David & Linda Egeler</i>	<i>Ray & Paula Nichols</i>
<i>Rich & Susan Erwin*</i>	<i>Julie Pearson</i>
<i>Lois Goldstein & John Heiam</i>	<i>Robert W. & Ann H. Pike</i>
<i>Mr. & Mrs. John R. Hicks*</i>	

<i>Mary J. Pitcher</i>	<i>William & Mary Todt - F</i>
<i>Dan Remahl*</i>	<i>Dana Vannoy</i>
<i>The Estate of Patricia D. Robinson*</i>	<i>Suzanne J. Voltz - F</i>
<i>Tom Robinson*</i>	<i>Phil & Barb Von Voigtlander</i>
<i>Elizabeth B. Rodgers* - F</i>	<i>Ralph A. & Margaret von Walthausen - F</i>
<i>Edward & Elyse Rogers - F</i>	<i>M. Sue Waltz*</i>
<i>John Ross - F</i>	<i>Gloria Whelan - F</i>
<i>Chris & Michele Shafer</i>	<i>Birgit Yetter - LC</i>
<i>Colette M. Stanish - F</i>	<i>Ron & Marty Yocum</i>
<i>D.W. & Joyce Stibbs</i>	

Because so much of our land protection work is about ensuring that the places we save today will be protected forever, planned gifts are indispensable. There is no better way to continue to make a difference for land conservation many years from now. If you would like to learn more about how you can become a Vanguard Society member, contact Diane Dupuis, Planned Giving Program Manager, at ddupuis@grtlc.org or 231-929-7911.

* New Vanguard Society member

- F** **Bold** entries indicate founding donors who gave their first gift to the Conservancy between June 1, 1991 and December 31, 1992.
- LC** Indicates donor is a Land Champion, making monthly gifts to the Conservancy.
- VS** Indicates donor is a member of the Vanguard Society and has made a planned or estate gift to the Conservancy.

Sally Akerley

William Habich, CB
Schmidt Real Estate

American Spoon

Foods, Megan Feeley
Page 9 Design

Doris Applebaum

Margaret R. Moran

**Connie Armstrong
& Chuck Grabiel**

Constance Metcalf

**Franz & Christina
Boehm**

William Habich, CB
Schmidt Real Estate

Greg & Christine Bohn

William Habich, CB
Schmidt Real Estate

William R. Brashear

Anita DeMarco Goor

**Sarah Campbell
& Bill Gitlen**

Pete Meyer & Elisabeth
Del Buono

**Kim & Christine
Cauchy**

Mark Nadolski, CB
Schmidt Real Estate

Raz Creamer

Pete Meyer & Elisabeth
Del Buono

James Dalley

Emily Anderson

**Michael & Charlene
Damic**

Mark Nadolski, CB
Schmidt Real Estate

**Bradley & Jennifer
DeArment**

William Habich, CB
Schmidt Real Estate

AJ & Elaine Del Buono

Pete Meyer & Elisabeth
Del Buono

**Diane Del Buono &
Kim Wilcox**

Pete Meyer & Elisabeth
Del Buono

Lori Del Buono

Pete Meyer & Elisabeth
Del Buono

Wally Edwards

Roger Dewey

Jenn Evans

Julie Burgess

**Kristin &
Terrence Finn**

Megan Finn

Don & Nancy Fraser

Tobin Fraser

Carl Fry

Erin Fry

**Casey Haapaniemi
& Philipp Gauss**

DeAnne & Todd Frank

Marcia B. Gest

Cameron & Fran Wolfe

Jack Gillen

Don & Barbara Harmer

Ward Griffen, Jr.

Ellen Suthon

**Margaret & Ward
Griffen, Jr.**

Maggie Duncan
Ellen Suthon
Dori Turner

Susan M. Haggins

William Habich, CB
Schmidt Real Estate

Harry & June Janis

Allen I. Janis

Jason Kent

Mark Hagan, CB Schmidt
Real Estate

**Wally Kidd, Kidd
& Leavy Real Estate**

Page 9 Design

Dale & Vonnice Long

William Habich, CB
Schmidt Real Estate

**Jody Marquis, Mama
Bear Restorations**

Page 9 Design

Bob Marshall

Ryan & Kelly Fisher
Robert Marshall

Scott Martin

Mark Hagan, CB Schmidt
Real Estate

**Aaron & Alison
McMaster**

Mark Hagan, CB Schmidt
Real Estate

Nancy & Phil Meek

Kathy & Tom Lehner

The Meyer Family

Pete Meyer & Elisabeth
Del Buono

Christine Milliken

James & MaryBeth
Milliken

Jay Milliken

James & MaryBeth
Milliken

Margaret Moran

Paolo & Patty DeMaria

**Jeff Smith,
MyNorth Media**

Page 9 Design

Stephen Nault

Cleo Zalik, Stephen Zalik
& Stacey Elder

**G. Patrick & M. Judy
Nerbonne**

Mike & Nancy Nerbonne

**Michael & Nancy
Nerbonne**

G. Patrick & M. Judy
Nerbonne

Lori Oakley & Family

Pete Meyer & Elisabeth
Del Buono

Peter Ohrnberger

Norman & Olga Lovell

Pat Oriel

Marilyn & Joe Dressel

Chris & Paul Pecknold

Pete Meyer & Elisabeth
Del Buono

**Dan Penning, The
Penning Group**

Page 9 Design

**William Politz &
Gail Wheeler**

Raymond Wall, CB
Schmidt Real Estate

**Royce Ragland &
Kenneth Bloem**

Dianne & Howard Richter

**Amy Reynolds
& Vic Herman**

William Habich, CB
Schmidt Real Estate

**Nelson & Martha
Rodes**

John Rodes

Ralph Rosenow

Jennifer Lamborne

Donald Sagaser

Carol & Danny Levin

**Kim Schneider,
Schneider
Communications**

Page 9 Design

Willard D. Sharpe

Arthur Greenlee

**Jim, Adrian
& Jason Siegmman**

James & LaRayne
Siegmman

Chris Sullivan

Richard & Phyllis Russell

Anita Summers

Ryan & Katherine
Paulson

Chuck Thiel

Wallace & Dolores
Hibbard

Emily Todd

Elizabeth Landen

**Dr. & Mrs.
Thomas Todd**

Elizabeth Landen

**Ron & Cynthia
Tschudy**

Stephen Phillips

Stuart Walker

Mark Nadolski, CB
Schmidt Real Estate

**Our Dear Watervale
Friends**

Will Heelan & Trish
Snowdon

Jane & Price Watts

John & Elizabeth Sprague

**Andrew & Joe
Wilhelme**

Jim Jackson

Joan Wolfe

S. Shirley Wolfe

**Deborah
Wyatt-Fellows**

Gayla Burns

Doris M. Ames

Barbara Ames

Phyllis Barnard

Randolph Barnard
Barbara Springsteen

Ellen Barrows

Elliot & Florence Morrison
John & Nancy Morrison
Alfred K. Nippert, Jr.
Monnie Peters
Julie & Andy Webster

Mitchell Berlin

Lenore Berlin

Ann Biederman

Helen Getty

Charles Bilby

Carl & Patricia Bachle
Holly Beachum
Bryce & Christine Evans
James & Charlene Roberts
Jeanne Townsend
Donald & Donna Yarblow
James & Barbara Walters
Jack & Sue Zinser

Richard Blum

Keith & Bobbie Counsell

Neil H. Brennan

Merrie Brennan

Nadine Brunner

Bill & Anne Burleigh

James Buchanan

Bill & Elaine Young

Ben Bushong

Alma Joyce Rombouts

John Callahan

Carol Conway

Mike Cobb

Chief Noname

Arthur & Millie Cosner

Kathleen Gallo

Nancy Dailey

Mary & Ted Ehlert

David Danes

Lucia Danes

Jack Day

Lyndon & Patricia Salathiel

Brian Donnelly

Kjell Svensson

Walter & Mary Drake

Penelope & Charles Curry

Patrick Egan

Barbara & Will Lynch

David J. Elliott

Scrub Calcutt
Carolyn DeWitt
Cheryl Doebler
Beth Howe
Wendy Loncar
Northwestern Bank
Melissa & Shawn O'Brien
The Sawyer Family
Van Anel
& Flikkema Motor Sales
Village Press, Inc.
Arno & Peg Von Walthausen
Phyllis Wilkinson

George Fabe

John & Nancy Morrison

Mike Feichtenbiner

Lois Feichtenbiner

Mardi Glass

Elliot & Florence Morrison
Monnie Peters

Elizabeth Glenn

Stucki Family Foundation

Donald Grobbel

Concerned Citizens of
Acme Township

Ann Guldberg

Tom Guldberg

George Field Hayes

Willa Hayes

Lloyd Hendry

Patricia & William Hendry

Patricia Henke

The Henke & McAlindon Family

Rankin Smith Henry

Sally J. Gillies
Reatha Williams

Sandy Henry

Kip & Mary Anne Rice

Russell Higgins

Kenneth & Daniel Michelson

Louis & Florence Honhart

Anne Honhart

Amy Hughes

Alena & Don Sabourin

Alice Stone Ilchman

Nancy Dickinson

Roger Johnson

Barbara J. Johnson

Gerald Kent

Jean Alexander

Joyce Kitchen

Grant Kitchen

Oscar Kraft

William & Mary Kubat

Leona Kroupa

Lew & Ginny Coulter

Mildred Kuhlman

Richard & Marilyn Albrecht
Keith & Bobbie Counsell

Howard L. Labadie

Mary Jane Meier

Darleen Landsfeld

Greg & Audrey Landsfeld

Mark Latterman

Marilyn Latterman

Richard Littman

Marilyn & Richard Albrecht
Keith & Bobbie Counsell

Dean Luedders

Jon & Mary Armstrong
Carol Burns & Steven Kraft
Paula & Bryce Dreeszen
Myrna & Tom Hitchman
Oscar & Shirley Kraft
The James F. Meredith Family
Maxine, Gary & Sam Mondshine
Frederick Oeflein
Robert & Ann Pike
Dori Turner
The Detroit Vessey Family
Ken & Pam Weddell

Joseph Magliochetti

Amy Bowes
Rod & Joan Durgin

Michelle Lynn Mangold

Will & Barbara Lynch

Kent Manning

Susan & Peter Blank
Barb & Phil Copus
Karl & Nancy Couyoumjian
Douglas Doetsch
& Susan Manning
Janet Doetsch
Betsy & Basil Easterwood
Hans Groenke
Kenneth & Edith Harper
Jeanna & Robert Honer
Gary & Karen Janes
Robert & Dorothy Kobs
Susan & George Leonard
Susan Lowenberg
Sarah & Terence Malone
Barbara Manning
Sonja Mast
James & Phyllis May
Kathryn & Jack Miller
Mary Agnes Mills
Lloyd & Shirley Preston

The Rockville Pregnancy Clinic

Fred & Priscilla Schwier

Gail Shulman

Bill & Julie Skinner

Barbara & Mel Smith

Gene Wandel

Ann & Mark Wiedelman

Jeanne & Jim Williams

Andrew & Clarissa Marckwald

Louise Ladd

Richard McNally

Walter Barkey
James & Donna Black
Paul & Amanda Brink
Mary Ann Carmichael
Deborah Chrisman
Elizabeth Chapieski
Michael & Cheryl Delehanty
Robert & Donna Dinkmeyer
Evelyn Gryson
Frances Gumpfer
Sara Harrington
Phyllis Howell
Lewis & Deborah Knecht
Nancy & Suzanne Knecht
Marie & Dale Mankin
Tom & Sue McNally
Charles & Susan Miller
Helen Millhouse
John A. Ransom
Matthew Sorys &
Kathleen Pirich
Robert & Monna Short
Larry Stecco
Donald & Dolores Swanson
Thomas & Magdalene Yeotis
Michael D. Young, Sr.
Mike Young Buick GMC

Martin Melkild

Elizabeth Melkild

Martin Miller

Alena & Don Sabourin

Helen Milliken

Norma & Joe Mariage

Madelaine Mode

Barbara Crumpton

Harley Morrison

J. Elliot & Florence Morrison
John & Nancy Morrison
Monnie Peters

Denton Nelson

Michele Nelson
Julie Spoto

Linda North

Linda & Randy Balla
Margarita & Katherine Barbosa

Henry & Rhoda Bernstein
 Marceline & Robert Brower
 Christine Drase
 Gabriela Kirk
 Dan Maloney & Barbara Soricelli
 Carol Pollak
 Carl & Hazel Vespa

Dorothy Obudzinski
 Joyce & Michael Cassin

Karen Ohrenberger
 Norman & Olga Lovell
 Pamela & William Vredevoogd

Bob Page
 Dori Turner

Mason Roy Palmer
 Sandra Palmer Zilincik

Arthur & Mayme Pearce
 Anne Purpura

Gordon & Cease Peschke
 Alan & Lenore Hutchenreuther

Laurence Plester
 Marie Plester

Pamela L. Polaczyk
 Clayton Garrett

Elmer J. & Genie Rabanus
 Carol Rabanus

Cliff Randall
 Tom & Lisa Krikke
 Amy Lewarchik
 Barbara Randall
 Ross & Kim Winchell

Nick Redei
 Mary Jane Meier

Helen Rollert Riordan
 Glen & Rebecca Chown
 Ross & Helen Childs
 Meredith Erickson & Family
 Curtis Harriman

Just Like Family Caregivers
 George & Clara McManus
 Robert & Eileen Milner
 Janet Peckens
 Joseph & Judy Zrimec

Patricia D. Robinson
 Jeff & Janet Carter
 Joanne Frantz
 Dennis & Lois Kavanagh
 Jayme Lahut &
 Katherine Robinson
 Alexander C. Robinson
 Freeman & Arlene Sims
 Mr. & Mrs. William Sims
 Mr. & Mrs. James Tousignant
 Mr. & Mrs. Gottfried VonLinsowe
 Mark VonLinsowe

Lee Robold
 Joan McLay

Jerry Rogers
 Eleanor Brownell

Mollie Rogers
 George & Martha Bailey
 Bowerman, Bowden,
 Ford, Clulo & Luyt, PC
 Maggie Duncan

Dave & Carol Fleisher
 Bill & Ann Henning
 Lynn Hopkins
 Charlie & Linda Kehr
 David Leavenworth
 John & Haval McCaill
 Althea Petritz
 Rob & Deb Rafferty
 Richard & Jennie Schmitt
 Helen Smeltzer
 Dori Turner
 Frank & Ruth Zinn

Donald Ross
 Ann Rogers

Burkhard Schneider
 Rob Dolinka & Nancy Reye

Warren Sharp
 Edwin & Susan Eckert

Robert Shimmons
 Susan Shimmons

Alan Sims
 Rob Dolinka & Nancy Reye

Herbert & Queenie Starick
 Stephen & Susan Fry

David & Casey Stearns
 Susan, Sally, Chuck &
 Lois Stearns

Frank Stulen
 Lynn Larson

Ralph Taylor
 Gary Azbart

Gloria Palomeno

Ruth Timmerman
 Barbara Berry
 Joyce & George Kempton
 Dr. & Mrs. Myron Miller
 Colleen Potthoff
 Helene Schwartz
 Ann & Mark Smith
 Jim & Stephanie Walter

Sanford Waldon
 Laurence & Barbara Jackson

Fred Warner
 Richard & Jennie Schmitt

Cinda Wall Wellman
 Donald Wall

Donna M. Wenzel
 - Velthuysen
 Pamela Wenzel

Harold Westcott
 Donald Sagaser

Leslie Edward Whitesel
 Harold & Lydia Chadwick
 Doris Hansen
 Paula Leinbach
 Sally Miedler
 Leslie Peck

Peter Wolfe & Will Wolfe
 Shirley Wolfe



PHOTO BY NATE RICHARDSON

2012 GIFTS OF TIME AND TALENT

We are deeply grateful to the following volunteers who help us in every way to accomplish our work:

Joanie Abbott	Bob Clement	Michael Grah	Tony Ligi	Kathy Partin	Neil Sweet
Max Ahlborn	Cindy Clement	Sophie Haas	Sig Linn	Tad Peacock	Serena Szimanski
Brian Allen	Doug Cook	Mike Haley	Ben Lundquist	Periwinkle Garden Club	Top of Michigan Mountain Bike Association
Nancy Baglan	Maralee Cook	Jackson Hall	Sally Lundquist	Margaret Platner	Cynthia Tschudy
Emily Baker	Sally Cook	Matt Hall	Dave Lyons	Heide Post	Greg Tulik
Andy Barbera	Izzy Cooper	Dick Hanson	Dan Macek	Karen Richardson	Sue Van Duine
Sherri Baughman	Dean Crandall	Jack Harris	Ma-Me-Ne-Sewong Garden Club	Heather Rinkel	Lynne Van Ness
Taylor Baughman	Steve Cross	David Hauser	Patrick Manke	Dan Roketenetz	Dana Vannoy
Tom Baughman	Kate Dahlstrom	Margaret Hauser	Sally Manke	Ralph Rosenow	Priscilla Walmsley
Jo Anne Beemon	Cortney Danbrook	Jessica Hemming	Joe Mariage	Nancy Ross	M. Sue Waltz
Dave Beresi	Joyce Delamarter	Dave Hicks	Norma Mariage	Debbie Rough	Ben Watt
Josh Beresi	Bob Deneen	Jann Hines	George Marsh	Glen Ruczynski	Flint Watt
Lenore Berlin	Linda Deneen	Greg Hodge	Ken Masck	Bob Rudd	Patty Watt
Ken Blakey-Shell	Sue Dionne	Elizabeth Hoffman	Marilyn Masten	Paul Schulert	Charles Werle
Rick Bobian	Tom Dionne	Cherie Hogan	John McCormick	Kim Schwaiger	Keith Westphal
Gloria Boyd	Christie Dompierre	Frances Holmes	Elizabeth McMullen	Betty Scott	John Robert Williams
Jerry Boyd	Bryce Dreeszen	Robert Holmes	Pete Meyer	Ken Scott	Chris Wilson
John Brickman	Paula Dreeszen	Gary Howe	David Meyers	Madison Seeley	Jim Woodburne
Tony Brolick	Gerri Erickson	Jim Jaeger	Genevieve Minor	Harold Shirey	Caelan Wright
Jay Burt	John Ester	Mark Jaeger	Ed Moehle	Fred Sittel	David Wylie
Bruce Campbell	Emily Fasan	Greg Kindig	James Moxley	Terry Smith	Charlene Wylie
Cathy Carter	Jillian Fejszes	Don Kingery	Dave Murphy	Keenan Spencer	Thom Yocum
Rich Cenci	Chad Ferrell	Jennie Kizer	Joe Nerone	Laura Spencer	Jeff Zeller
Eric Chatterson	Richard Fidler	Keith Kluting	Michele Nerone	Gretchen Staub	
Becky Chown	Carl Freeman	Arlene Koons	Shirley Niemi	Don Stauffer	
Leonard Chown	George Gambert	Carol Kupovits	Northern Michigan Mountain Biking Association	Gary Stauffer	
Martin Chown	Quinton George	Greg Landsfeld		Jane Stauffer	
William Chown	Joanie Gerberding	Gordie LaPointe		John Steben	
Lou Ann Churchill	Miles Gerberding	Carole Lee	Carla Olds	Angela Strong	
Virginia Claudepierre	Jim Gibson	Willie Lee	John Olds	Clete Swanson	
Dale Claudepierre	Bill Gittlen	Marilyn Ligi	Matt Parrish		

Thank You!



2012 GIFTS IN-KIND

Our heartfelt thanks to:

Mark Jaeger for the gift of a beautiful tractor for use at Misty Acres

Lane Plumbing and Heating for plumbing supplies for renovations at Misty Acres

Fairmount Minerals and **Saving Birds Through Habitat** for the tree seedlings which were planted at Arcadia Dunes

Carla and John Olds for the decorative items for Misty Acres

And for their support of GTRLC events:

Bay Area Recycling for Charities

Black Star Farms

Boylan Golf Cart Sales

Chateau Grand Traverse

Cherry Capital Foods

G.J.'s Rentals, Inc.

Gary Howe Photography

Grandview Catering

L. Mawby Vineyards

Left Foot Charley

Peninsula Cellars

Sleeping Bear Farms



THE CONSERVANCY FUND

The following donors made gifts and/or pledge payments to **The Conservancy Fund** between January 1 and December 31, 2012. This unrestricted fund supports our annual operating budget. Your gifts allow us to build a steady, reliable income to meet our day-to-day operating budget needs and ensure our programs are sustainable. **Please note:** Pledge commitments made, but not yet received are acknowledged in the year or years when payments are made.

We deeply appreciate and depend upon your generous support.

SUSTAINERS CIRCLE

Sustainers Circle members are those donors who have given \$500 or more to the Conservancy Fund this year.

DONORS OF \$5,000 OR MORE

Anonymous (3)	Gloria & Leith Butler	Clifford & Norma Fox	Thomas & Deborah McMullen	Margaret Ann Riecker
Tripp & Chia Huei Amdur	The Margaret A. Cargill Foundation	Robert & Kathleen Garvey	Phillip & Nancy Meek - F	Estate of Patricia D. Robinson - VS
Americana Foundation	The Carls Foundation - F	Steven & Sheila Hamp	Robert & Joyce Mims - VS	Donald & Glenna Southwell
The Steven & Kathryn Bandstra Foundation	Dick & Carol Crout - F	Hansen & Bodenstab Foundation	Ken & Susan Morrison	Kathy & Rolf Stadheim
Beers Family Foundation	Betsy & Stan Dole - VS	Robert & Carol Hildorf Foundation	The Charles Stewart Mott Foundation	Kathy Tuckerman
Charles & Nancy Brickman - F	Michael & Rhea Dow	The Kresge Foundation	The Oleson Foundation - F	The Shaw & Betty Walker Foundation
Burleigh Family Foundation	Debra & Daniel Edson - F	Mahogany Foundation	The Polk Foundation	The Wege Foundation - F
	Michael & Rhonda Estes - F		Timothy & Margaret Price	Robert & Pauline Young - F

DONORS OF \$1,000 – \$4,999

Anonymous (3)	Douglas Doetsch & Susan Manning	Greg Holmes & Katherine Roth	The McWilliams/ Piraino Family Foundation	Pat Sharpnack - F
Robert & Nancy Baglan - LC, VS	J. Bennett & Tauna Donaldson - F	Jim & Diana Huckle - F	John & Nancy Morrison - F, VS	Michael & Suzette Simpson
Kathy Baglan & Rob Frazier	Bryce & Paula Dreeszen	Jerry & Pat Jehle - F	Dave Murphy & Sue Peters - F	The Skillman Foundation
Randy Barnard	Rich & Susan Erwin - VS	June 8th Foundation - F	Mary and Paul Neustadt	Laura Staich & Philip Ruedi
Thomas Beauvais - VS	Bob & Ruth Fountain	Elizabeth & David Karczewski	Ed & Patty Petrick - F	David & Sara Taft - F
Dick & Sue Bingham	Lawrence & Martha Garber	Charlie & Linda Kehr - F	Cynthia & Scott Paradise	Paul & Nancy Tousley
Brian W. Blood - F	James & Lauri Gartner - F	James & Eileen Kelly - F	Ed & Patty Petrick - F	Traverse Magazine
Amy T. Bowes	Kevin and Sharron Gay	Jeanie & Murray Kilgour	Denis & Martha Pierce - F	Judy Twigg
Norton & Mary Lee Bretz	Helen B. Getty	Gabriela M. Kirk	Dan & Pamela Prevo Foundation - F	M. Sue Waltz - VS
Dan & Lisa Brickman	Jeremy & Anni Gibson - LC	Rev. Oscar & Shirley Kraft	Anne & Joseph Purpura	George Warrington & Drew Gores
Elaine Bridges	Grand Traverse Regional Community Foundation	Steven Kraft & Carol Burns	Carol A. Rabanus	Gloria Whelan - F, VS
Paul & Amanda Brink	Great Lakes Forge	Jackie & Bob Kunnen	Terry & Robbi Rogers	The Woodward Family Foundation
Gordon Brunner - F	Hans Groenke	Louise Ladd	Kevin A. & Lisa K. Russell	Ron & Marty Yocum - VS
Kristen Bullock & Greg Mills	William & Kathleen Hanson	Kathy & Tom Lehner	Nancy Seasholes - F	Michael & Trish Young
Ruth Starke Burkhead	The Hardwicke Family Fund - F	Mark & Juliana Leslie - F	Send Brothers Feed	R.M. Young Company - F
Robert A. Carstens	Liz Hardy & Tom Kienbaum	James & Kirsten Levinsohn	Milburn L. Shafer	
Elisabeth W. Case & Douglass C. North - F	Philip S. Harper Foundation	Gregory & Lissa Magel		
Thomas H. Cobb - F	Dave & Karin Harrison	Barbara Manning - F, VS		
Joseph & Leslie Cook - LC	Sharon Hillquist	Josephine "Jody" Marquis - F, LC, VS		
Clan Crawford, Jr.	Tom & Myrna Hitchman - VS	Peggy L. Martin		
Kimberly Dickens		Robert J. Martin		

F **Bold** entries indicate founding donors who gave their first gift to the Conservancy between June 1, 1991 and December 31, 1992.

LC Indicates donor is a Land Champion, making monthly gifts to the Conservancy.

VS Indicates donor is a member of the Vanguard Society and has made a planned or estate gift to the Conservancy.

DONORS OF \$500 – \$999

Kirk & Cathy Agerson	Tim & Laurie Daum	John Hood & Irene Brown - F	Robert Marshall	Diana Schmiedicke
Kimberly Albright & Michael Dow - F	Joyce Delamarter	Hospitalists of Northern MI	Bob & Lisa McCrie	Jack & Gail Schneider
Susan Arnold & Ralph Poelling	Michael Dively	Michael & Marsha Howard	Microsoft Corporation Matching Gifts	Benjamin & Adele Shambaugh
Deena Barshney	Dole Family Foundation	John & Wilma Hultman	Sally Miedler	John & Victoria Sheagren
James Bergman & Penelope Hommel	Hank Dow	Illinois Tool Works Foundation	Bruce Monroe & Cynthia Giacobone	Signs Now
Maryellen & Robert Bieder	EJ	T. Michael & Joan Jackson - F	J. Elliot & Florence Morrison - F	John Spencer - F
The Boccia Family Foundation	Andrea & Parker Field	Linda & Greg Jaris	John Motil	Mary & William Swift - F
Joe & Elise Brooks	DeAnne & Todd Frank	Edwin & Phyllis Kidd - F	Stephen & Sarah Nault	Al & Ann Taylor
Eleanor Brownell	Leonard & Karen Franseen	Donald & Barbara King - LC	Ryan & Anne Nordberg	Terrie Taylor & John Robert Williams
Robert Buckner	Joanne F. Frantz	Wayne & Ruthanne Kladder - F, VS	Stephen & Ann Norman - F	Marjorie & Svend Teglhøj
Jill C. Byron	Norman & Mary Anne Frey	Jean & Walt Kretzmann - LC	Otwell Mawby, PC - F	Jeanne G. Townsend
William & Sandy Cartwright - F	Jim & Lucy Gerlach	Gregory & Audrey Landsfeld - LC	Melba J. Panhorst	Dori Turner
Richard & Tracey Cassard	Christopher M. Gores	Harold & Pamela Lassers	William & Kathleen Parsons	Thomas & Kathleen Volle
Chevron Humankind	Jeffrey A. Graft	Marcia Lee	Leslie Peck	Melinda Wagner
Donald M. Chown - F	Jack & Ruth Harris - LC	Philip and Judy Legee	Gary Pomeroy	The Warrington Foundation
Coldwell Banker Schmidt Real Estate Inc.	Louise & Larry Haskett	Lou Anne & Don Lindemann	Ed & June Prein - F	George M. Wickstrom
Chuck & Connie Collett	Will Heelan & Patricia Snowden	Ed & Nancy Lyon - F	Polly Rea	Wildlife and Wetland Solutions
Rob & Diane Collier - F	Walter D. Herrick	Jon & Mary Ann March - F	Dan Remahl - VS	Karla & Stan Woell
Michael & Carolyn Collins	Mr. & Mrs. John R. Hicks - VS	Joseph & Norma Mariage	Robert & Grace Rudd - F	Jesse & Molly Wolff - LC
	John & Shirley Hoagland	Bob & Nancy Marshall	Jo & Pug Rundio - F	Jacques & Eleanor Young
	Jo & Donna Holmes		Douglas Salerno	John & Marylou Zaloudek

DONORS OF \$250 – \$499

Anonymous (2)	Linda Butka & Bryan Olshove	Maggie Duncan	Michael & Christine Gravlin, Sr.	Marilyn Kamp
Joanie Abbott - LC	Dr. David & Valerie Canter	Lois Eaton - F	Jo Grindem	Robert W. Kasperek
Barbara Jean Ames	Karolina Carls	Michael Emerson	Halliburton Giving Choices	W. K. Kellogg Foundation
Joe & Kathryn Anderson - F, LC	Felix T. Casillas	Lois Feichtenbiner - F	Ann & Byron Hanson - F	Phil & Margaret Knapp
Erin Anderson - LC	Glen & Rebecca Chown - LC, VS	James & Creda Feller	Barry & Evelyn Harper	Carol Kozelka
Larry & Sharon Andringa	Pete & Shari Clason	Andrew G. Fischer	Donald & Clara Hasenick	Vernon & Tina Lalone
Dave Atkins	Max & Reatha Cochran	Ron & Mary Fitch	Bethany & Robert Hawkins	Keith & Bernice Lamkin
Barbara Bailey	Columbia Asset Management	Michael S. Fitzsimmons	Patricia L. Hendry	Elizabeth Landen
Robert & Nancy Beine	George C. Comden	David & Carol Fleisher	Dotti Clune & Jill Henemyer	David & Rebecca Leege
Carl & Sally Benner	George & Pat R. Daisy	George & Mary Ford - LC	Mike Hennesey	Left Foot Charley
Roger & Kathy Benson	Louis F. Danek	Tom & Karen Gartland	Philip Hill & Elizabeth Rodgers - F, VS	Gordon & Kelly Liechti
Bruce & Pat Berghoff	Brian A. Derisley & Elizabeth Richard-Derisley	Bruce & Valerie Gerhart	Thomas, Carol & Sean Hollowell	James & Miriam Longcore - F
Lee & Arleta Bernson	Preston & Mary Dilts - F	Elmer Gilbert & Lois Verbrugge - F	IBM Corporation	Tim Lund
Steve and Margaret Blouw	Ron & Carol Dooley	Kenneth F. Goebel	Nancy K. Jacobs	David & Lorah MacIntosh
Merrie Brennan - F	Margaret T. Downward - F	Geoffrey & Diane Gonda	Joachim & Christa Janecke	Gladys Maguire
Karl & Lauri Brockmiller - LC	Richard & Catherine Druffel	Edward Graft	Johnson/Clark Printers - F	Dave & Julia Mahan - F
Jo Bullis - LC				Denny & Deb Malone
				Marathon Automotive

Travis Marshall	Michael & Kathleen Nicholson	Plant Wise Restoration	Joan Sheard & Myrna Yeakle - LC	Paul Thomas - LC
Leon & Shirley Martuch	Northwestern Bank	Gary Richardson & Cheryl A. Gross	Susan Sheldon	Emily Todd - F
Charlotte M. Marx	Dr. Homer Nye & Rebecca Mang	Kurt & Sally Rivard	Steve & Carol Shuckra - LC	Howard & Dianne Walker - LC
Mary Molden Karshner Living Trust	Jan & Mary Ellen Nyland	David & Barbara Roberts	Albert & Evi Sickinger	Nancy & Kent Walton - F
Thomas & Linda Mead	Richard Odell	Karen Roberts	Cheryl Sisk & Douglas Gage	Steve & Amy Whitlatch
John & Nancy Meade	John & Carla Olds	Patricia & Edward Robinson	Maureen & Paul Smyth	Bruce & Dorothy Wierman
Katherine Messenger & Will Wright	Megan & Andy Olds - LC	David & Elizabeth Rollert - F	Jeff & Judy Spencer	Charles Wilbur & Caroline Blaum
Thomas & Judith Mich - LC	Leroy Owens & Mary Lou Henderson	Paul & Carol Rose	Charlie & Kathy Spoering	Bruce & Avace Wildie - F
Michael Enterprises, Inc.	Beverly D. Page	Diana & Basil Rowe	Susan, Sally, Chuck Lois Stearns	John Wilkinson & Robin Silva-Wilkinson
Philip & Connie Micklin	Page 9 Design	Paula M. Sagala	Martha A. Stimson - F	John & Angela Willis
Charles W. & Susan P. Millar	Roland & Sara Pandolfi	Paul Sander & Lori Lichtman-Sander	Barbara R. Stout	Janet B. Wolf
Barb & Gregory Mort - LC	Dick & Ellie Paulsen	John & Margaret Sargent	Bruce & Jane Stowe	Tom & Mary Jo Workman
Jo Ann & Gary Munce	Jose Perez-Sanz & Catherine Boshier	Kristen Schaub - LC	Herbert & Lucille Swanson - F	William & Elaine Young
Brownson & Betty Jean Murray	David & Kelley Peterson	Gary & Nancy Seabrook	Ward & Francoise Swingle - F, LC	Frank & Ruth Zinn
Andrew Muth & Patricia Saad	Althea Petritz - F	Elizabeth M. Sharp	Rick & LuVon Taylor - F	
Ronald E. Nehring		Lowell & Ellen Shaw		

DONORS OF \$1 – \$249

Anonymous (3)	Chuck & Maudie Anderson - F	George & Martha Bailey	Neil Bavikatty & Christin Martin	Priscilla Belden - F
Jennifer A. Abel	Emily Anderson	Margaret Bailey & Beverly Sporck	Jane Bay - F	George & Ruth Bell
Ross & Emily Abrahamson	George Anderson - F	Walter & Marilyn Baird - F	Anthony & Susan Baynard - F	Jean C. Bell
Robert & Mary Ackerman - F	Richard & Linda Anderson	Shirley & Nick Baker	Rebecca Beach	Jeffrey & Kathleen Bell
Jay & Shirley Adams	Sallee & Thomas Anderson	Dianne Baker-Hale	Holly Beachum	Norman Bell & Gail Parry
Thomas & Susan Adamson - F	William & Paula Anderson	Elizabeth Balbuena	Bill & Marti Beals	Bell Title Lakeshore
Keith & Carol Adler	Barry J. & D. Karen Andrews	Linda & Randall Balla	Walter & Elaine Beardslee	Marcia Bellinger & Irv Stoner - F
Aetna Foundation	Bob & Molly Appleford	Bank of America Matching Gifts	Anton Becker	Robert & Barbara Below - F
Leslie Li, Brian & Max Ahlborn	Jon & Mary Armstrong - F	Andy & Eunice Barbera	Joanne Bryan Becker	Marc Bendick & Mary Lou Egan
Donald & Peggy Aiken	Judith A. Arnold	Rachel & Gentry Barden	Elizabeth Bedell	Eric & Anita Bennett
Marilyn & Richard Albrecht	Richard & Janice Arnold	James F. Barker	Joy French Becker	Richard & Maria Benschel
Catherine C. Alfred	Richard & Marion Arps	Walter Barkey, M.D.	Nan & Tim Beeler	Marilyn & Dennis Benson
Jerome & Sharon Allaire	Art's Tavern	Eliza Barnard & James Ryan	Ben Begley & Kathleen Wills - F	Steven & Constance Benz - F
Maurice & Elizabeth Allen	Christine Arvidson & Henry Doss -VS	Tom Barnes	Ernie & Mary Behnke	Rosemary R. Berardi
Dan & Jane Allensworth - F	John & Nancy Ashton - F	Burton & Lenora Barnes	Reverend Ted Beiderwieden	Ralph & Lynda Bergsma
Martha & Kenneth Allman	Randy & Peg Asmus	Peter & Karen Barnes	Robert & Carol Beidler	Lenore Berlin
Tom Almer	Chuck & Lilo Atkinson	Robert & Anna Barron		Henry & Rhoda Bernstein
James Alstrom	Fred & Jean Auch - F	Cindy & Gary Barta		
Nicoline Ambrose	Stephen J. and Jarilyn S. Auger	Stephen & Carol Bartholf - F		
Joseph L. Ambrosi	Bruce & Susan Auten	Martha A. Barton		
Americana Collection	Gary Azbart	Marie Louise G. Bates		
Jim & Roberta Amstadt	Renzo & Judith Azzano	Harriet Batson-Benson		
Bernard & Lorraine Anderson	Carl & Patricia Bachle	Bill & Gail Baughman		
Carol L. Anderson	William Baguley	Donna Bauman		
Chris Anderson				

F **Bold** entries indicate founding donors who gave their first gift to the Conservancy between June 1, 1991 and December 31, 1992.

LC Indicates donor is a Land Champion, making monthly gifts to the Conservancy.

VS Indicates donor is a member of the Vanguard Society and has made a planned or estate gift to the Conservancy.

Barbara A. Berry
 Barb Bersuder
Warren & Barbara Berthelsen - F, LC
J. G. Marc Bertrand - F
 Patsy & Charles Bevis
W. Dean & Carol J. Bigelow - F
 Nathan & Audra Bildeaux - LC
 John Biliti
 Don & Bonnie Bills
 Ron & Stacey Bing
 Keith & Ethel Birchler
 William & Ilene Birge
 Richard & Terrie Birndorf
 James & Donna Black
 Black Star Farms
William Blaha - F
 Scott & Suzette Blair
 Susan & Peter Blank
 Alan Bliss & Jan McNish
 Wes & Sharon Blizzard
 Carolyn & Richard Block
 Bill Bobier
 Carol Bocskay
 James & Gayle Boecker
Gilbert & Anne Bogley - F
 Earl Bogrow & Julie Upp
 Nena Bondarenko
Joseph A. Boner - F
 Michael D. Bonnell
 Lachelle and Richard Bonner
 Joan & Alfred Bonney
 John & Jean Boquist
 Boride Engineered Abrasives
 Donna M. Boris
 Andre Borrello
 Rosaleen & Richard Borton - LC
 Susan & Ted Bosler
John Bowers - F
Bowers Harbor North Beach Assoc. - F
 Bowers Harbor Vineyard & Winery
 Jerry & Gloria Boyd
Jeanne Boyd - F
 Katherine Boyne & Jon Mead

BP Fabric of America Fund
 Dennis & Patricia Bracey
 Lyle & Marinaran Bradford
 Thomas W. Bradley
 Patrick & Carole Brady
 Joyce M. Braithwaite-Brickley
 Mary Bramlage
Marilyn & Arthur Branco - F
 Dennis & Martha Branstad
Anne E. Brasie - F, LC
Carl Brauer - F
 Richard & Marty Brauer
James & Patricia Braun - F
 Dr. Dan & Jeri Lynn Braunlin
 Charles & Ester Breed
 Joyce & Robert Brenner
 Barbara Brewer
 Bob & Nancy Brick
Robert T. Brick - F
 Philip Briggs
 Carl & Ruth Brighton
 Harry Brink, Jr.
 Ronald & Patricia Britt
 Jim & Candy Brody
 David & Patricia Brogan
 Gary & Beverly Brouwer
 Robert & Marceline Brower
 Esther Brown
 Kathleen M. Brown
Larry & Connie Brown - F
 Robert Brown
Cindy Browne - F
 Dawn & Daniel Bruce
 Richard & Carolyn Brunelle
 Hal Bruning
 Janet & Bill Buck
Anthony & Helen Buday - F
 Marilyn & Jack Budrow
Dean & Sandie Bull - F
 Van A. Burd
 Marilyn M. Burfiend
 Carol & Bill Burger
 Julie Burgess
 Tom & Charlene Burgess

Matt Burke & Teresa Krieger-Burke
 David & Linda Burkey
 Darryl & Pamela Burkhardt
 Gayla Burns
 Eunice L. Burns
John & Susan Burns - F
 Moira A. Burns
 Jason Bush
 Leon Bussa
 Toni Button
 Susanne B. Buxton
 Peggy and Jody Byland
Robert & Sue Cain - F
 Harry & Betsy Calcutt
 Evan & Virginia Calkins
 Tim Calkins & Carol Saltoun
 Michael & Nancy Call
 Bruce & Linda Campbell
 Donald D. Campbell
 Douglas G. Campbell
Edwin Campbell - F
 Frederick & Denise Campbell
 Norman & Maureen Campbell
 Paul & Carole Campbell
 Vera Campbell
 The Candle Factory
 Ellie Canfield
 Denis & Eileen Cannaert
 Thomas L. Capua, Sr.
 David G. Card
 Gerald & Nancy Card
 Leonard & Marguerite Carlson
 Marianne Carlson
 Paul A. Carlson
 Mary Ann Carmichael
 Robbie & Archie Carmichael
 Margaret F. Carmody
 Manson & Dorothy Carpenter
 Brad & Beth Carrington
 Jeffrey & Janet Carter
 James & Holly Cartwright
Harold & Marsha Case - F



PHOTO BY NATE RICHARDSON

Scott T. Cassel
 Joyce & Michael Cassin
 Kevin & Shannon Celarek
 Fred & Michelle Cepela
 Harold & Lydia Chadwick
 Mary Chalker
 Michael & Elizabeth Chamberlin
 Diane & Everett Chambers
 Paul Champion
 William Champion
 Mr. & Mrs. Charles M. Chapin
 Elizabeth E. Chapleski
 Jan A. Chapman
 Richard & Shirley Chapman
 Harold R. Chappell III
 William R. Chase
 Alice A. Chema
 Michael & Susan Chesney
 Carol & Fred Chidester
 K. Ross & Helen Childs
 Eric Chown & Rachel Beane
 Deborah S. Chrisman
 Kay Christian
 Norman & Laura Christopher
 James & Lauri Christopherson
Joseph & Nancy Chrzanowski - F
 Bill & Karin Chung
E. Terry & Josephine Clark - F
 William Clark

Dale & Virginia Claudepierre - F
 Julian H. Clayton
 Bob & Cindy Clement - VS
 Larry & Julie Clingman
 Julie Clynes - LC
 Danielle Cobb
Sara Cockrell - F
 Coding Products
 Robert & Debra Coffey
 Richard & Janice Coggeshall
 Henry J. & Bonnie Cole
 Robert & Susan Cole
 William & Joanne Cole
Dan & Shirley Coleman - F
 Michael & Marion Collier
 Cynthia Collins
 E. Todd Collins
Edward & Barbara Collins - F
 Jo Collins
 Michael Collins & Margaret Grano
 Nick & Virginia Colucci
 Peg & Tom Comfort
 Eleanor L. Comings
 James & Dorothy Compere
 Jane Conard
 Janet & Robert Condon
 Michael T. Conway
 Patrick & Carol Conway
 Sandy & Dean Coobac
 Douglas & Sally Cook
 Maralee Cook
 Robert & Karin Cooney - LC

James S. Cooper	Christine Deyo	John & Ruth Edick - F	Margaret A. Ferguson	John Freeman & Mary Rose Farrington
James & Darlene Cooper	Harold & Edna DeYoung	Gary & Ann Edwards	Ferguson & Chamberlain Associates	Kenneth D. Freeman
John & Renee Cooper - F	Stephany R. Diana	Jeanne E. Edwards - F	John & Joan Ferrari	Gargi French
Barbara & Philip Copus	Rob & Pat Dickerson	Mary & Ted Ehler	David & Toni Ferris	Marjorie L. French - F
Steven & Mary Cortese	William & Roberta Dickie	Kathy & Don Ehrenberger	Joe & Marianne Fields	Suzanne Freshourm - F
John Cosner	Nancy Dickinson - F	Donald & Sally Eichberger	Ronald Fine, MD & Marcy Cook-Fine	David & Esther Frey
Lew & Ginny Coulter - F	Nelson W. Diebel	Elk Rapids Garden Club	Charles Finley	Gordon Friese & Mary Anne Rivers
Keith & Bobbie Counsell	Paul & Eleanor Diesing	Gae Ellery	Megan Finn	George & Maiga Friess
Carol & Howard Cousineau	Hannah Dietz	Phil & Rita Ellington	Brian R. Fisher, DDS	Friess Family Cottage
Karl & Nancy Couyoumjian	Carole & Richard Dills	Charles & Susanna Ellinwood	Bruce A. Fisher - F	Hollis P. Fromm
Kenneth H. & Cynthia Cox	Don & Deborah Dinkmeyer	David & Sally Elliott - F	Ethel C. Fischer	William & Nancy Fronk
Bill Crain	Robert & Donna Dinkmeyer	Jeffrey & Barbara Ellison	Ryan & Kelly Fisher	William & Mary Frost
Thomas Crampton - F, LC	Robert & Barbara Disse - F	Dorothea and Bill El-Yasir	Kay Gram Fitzgerald	Erin Fry
William Crowdus & Barbara Rollinson	Cheryl Doebler	Ed & Ann Emenheiser	Beth & Joe Fitzsimmons	Stephen & Susan Fry
Tom & Judy Croxton - F	Robert & Mary Doerr	Diane & Tom Emling - F	Tamurla Fletcher	Gary & Carol Frye - F
Barbara L. Crumpton	Janet Doetsch	Kevin Empson	Jane F. Fochtman	Edward & Rita Furdak
Jeffrey P. Cunard	Aileen Dombrowski - F	William & Margaret Enders	Bill & Mary Fogarty	Joel & Lucille Gaff
Tom Cybulla	Nancy M. Donald	Mary R. Engdahl	David Foley & Margaret Willman - LC	Peter & Patricia Gaines
J. Dewey Daane	Carole Donaldson - LC	Tom & Cindy Engdahl	Food for Thought	Alex & Mary Anne Galbraith
Robert & Holly Daane	Jean Z. Donaldson	Environmental Sustainability Solutions	Margaret J. Forgione	Robert & Jill Gallery
Daniel & Gail Dall'Olmo - F	Robert & Karen Dopke	Melih & Suheyra Erhan - F	Robert & Beverly Forslund - F	Kathy Gallo
Lucia Danes	David A. & Maureen Doran - F	Bill & Gail Ericson - F	Andrew & Sharon Foster	Gary & Victoria Gallup - F
James R. Daoust	Ray & Linda Dornbusch	Raymond G. Erlandson - F	Barry & Julie Foster	Paul J. Gambka
David & Nancy Daugherty	Dick & Guyla Dumanian - F	John & Char Ester	Bud & Nancy Foster	Robert & Christine Gamble
Betsy Davidson & Sheryl Coston	Lester & Natalie Dragstedt	Bryce & Christine Evans	Donald Fouch & Janice Arnold	Philip & Lois Gannon - F
David H. Davis	Joe & Marilyn Dressel	Chad & Monica Evans - LC	William & Nancy Foust	Carl & Eileen Ganter
Jon & Mae DeBruyn	Edward & Barbara Driese - F	Gordon & Barbara Evans - LC	Norma Alice Fox	Kimberly & James Gardzulis
Graydon & Sherri DeCamp - F	Earl & Anne Dryden - F	Keith & Gail Evans	Patricia W. Fox	Heidi Garrahy
Alice & Jerry Deck	Dale & Anna Ducommun	Frank M. Even, Jr.	David & Martha Frank	Clay & Linda Garrett
Joan P. Dedo	Raymond & Nancy Duede	Roger & Carol Faber	Linda Frank & Klaus Lehrer	David & Cheryl J. Garvin
Maureen J. Delaney-Lehman	Steve & Betsy Duede - F	Jack & Donna Fahlen	Don & Nancy Fraser - F	Tom Gast & Susan Leason
Elizabeth DeLaRossa - LC	Sue & Tad Duemler	Mary & Bill Fairgrieve	Joseph Fraser - F	Joanne & Donald Gatz
Michael H. & Cheryl L. Delehanty	Rita & Glenn Dukes	Garry & Barbara Faja	Tobin & Gretchen Fraser	Arnold & Eleanor Gatzke
Elsa Della Torre	Robert & Louise Dunbar	James & Fran Falender	Alta & Rob Frears - F	Diane Geddes
Paolo & Patty DeMaria	Arthur Dundon	Tom & Linda Farrell	Ellen Fred	Charles & Nadine Gelman
Karen M. Denolf & K.T. Hayes	Cheryl & Bill Dundon	Robert & Barbara Farster		Douglas & Shirley Gembis
Bill & Sandy Derman	Roger & Angelica Dunlap	Richard & Lori Fasi		Mark & Mary Beth Gentry - F, LC
Kent & Victoria Des Jardins - F	Dorothy Dunville	Jan Faulkner		
Doug & Margo Detzler	Janet E. Durbin	Gregory & Nancy Fazzoni		
Rich & Mary Devon	Rod & Joan Durgin	Tim & Ellie Feddersen		
Carolyn DeWitt	Cherlyn & Timothy Durham	Dr. Peter & Ivana Fedor		
	Frank & Shirley Durham	Brian & Crystal Feeney		
	Jeanine Easterday - F	David S. Feenstra		
	Betsy Easterwood	James & Deborah Fellowes - F		
	Edwin & Susan Eckert			

- F** **Bold** entries indicate founding donors who gave their first gift to the Conservancy between June 1, 1991 and December 31, 1992.
- LC** Indicates donor is a Land Champion, making monthly gifts to the Conservancy.
- VS** Indicates donor is a member of the Vanguard Society and has made a planned or estate gift to the Conservancy.



Linda & Lee Gerard
 Roger Gerstle & Marjie Rich
 Walter & Virginia Gerstner
 Hilary Gessner
Thomas A. Getz & Margaret Burrows-Getz - F
 Irene & Alex Gherlan
 James Gibson
 David & Helene Gidley
 James & Lisa Gies
 Sally Gillies
 Bill & Jayne Gilligan
 Jim Gillison
 Jim & Elie Gillison
 Excavating, Inc.
Michael Gillman - F
 Benjamin & Susan Gilmore
 Joe & Lois Gilmore
 Mark A. Gilmore - LC
 Robert S. Glassman
 Robert & Paula Glise
 Sarah E. Glupker
 Sharon & Craig Goble
 Mary Joan Godfrey
 Richard E. Goerke
 Lita Goess
Sue Goodell - F
 Doug & Karen Goodkin
 T. James & Marilyn Goodwin
 Armen & Carolyn Googasian
 Scott L. & Jennifer Gorland
 Thomas & Inez Gotts
Gourdie-Fraser, Inc. - F
James & Sue Grady - F

Guy & Kimberly Gramzow
 Kathy Gray
 Charles & Judith Greaves
 Rose Green
 Elliott & Sandra Greenspan
 Lorne G. Greenwood
 Bruce & Erica Greer Family Foundation
 Leslie & Mary Griffus
 David & Laura Groenke
 Michael & Anne Groleau
Harold & Gwendolyn Groves - F
 Linda Grubaugh
 Alan & Phyllis Grunewald
 Evelyn M. Gryson
Tom Guldbergm - F
 Ms. Julianna Gulish
 Frances G. Gumpfer
 Beth & Wayne Guntzviller
 Ronald Gurdak
 Lionel & Carol Guregian
 Ann & Hal Gurian
 Sarah Lutes & Linda Guthrie
 Emily T. Guziak
 Jan & Dave Gwinneil
 Richard & Patricia Haan
 William E. Habich
 Mark Hagan
 Jane A. Haibel
 Kenneth & Joann Haines
 Rick & Chris Halbert
Michael & Mary Haley - F
 Mark & Janet Hall

Frederick Hambly
 Anne Hamilton
 Hamilton Farm Bureau
 Ross Hammersley & Kathryn Madigan
 Edward & Jeanne Hammond
Nancy K. Hammond & Tim Wolf - F
 Bill Hanel
 Don & Meg Haney
 Doris Hansen
 Gerry Hansen
 Joanne Hansen
 Lorraine Hansen
 Lyle Hansen
 Davis & Jane Harcourt
 Leslie Ann Hargett
 Frances Harju
Donald & Barbara Harmer - F
 Robert & Carol A. Harmon
 Kenneth & Edith Harper
 Mark & Cathy Harrell
 Sara J. Harrington
 Edward L. Harris
 Joan Harris
 Cornelia M. Hart
 John A. Haskin & Roxanne Fall
 Floyd & Jana Hassett
 Irene & Charles Hathaway
 Willa E. Hayes
 Andrew Hayhoe
Bill & Kirty Heald - F
 Scott & Nancy Hedberg
 John & Charlene Heim
 Jerry & Barbea Heiman
 Phyllis & Dykstra Heinze
 Roger & Judy Heit
 Greg V. Hekel
 Andrew Helmboldt
 Ron Helmboldt
 Eleanor & William Hendershot
 Cameron Henke
 Bill & Ann Henning
 Patricia and Frank Hennrick

Sandra & Mark Henschell
 L. Thomas & Dianne Hepner
 The Herrington-Fitch Family Foundation
 Grace M. Herta
 Roxan Hessenaar
 Wallace & Dolores Hibbard
 Doug & Martee Hickman
 Paul & Ruth Anne Hickman
 David & Judy Hicks
 Harold & Wilma Hicks
 James & Lois Higgins
 Bruce & Anne Hildreth
 Margaret Hiles
 Audrienne Hill
 Matthew Hilliard
 Steven M. Hilty
 Alan & Elizabeth Hindmarch
 James & Leigh Hinkamp
Jim & Alice Hinkamp - F
 Richard J. Hitchingham
 Thomas D. Hitchman
 Michael & Janet Hluchaniuk
 Stu & Margaret Dewsbury Hobbs
 Ann & George Hockin
 William & Suzanne Hoff
 Anne M. Hoffa - VS
 James & Virginia Hoffa
 Robin L. Hogan
 Virginia L. Hogan
 Steve & Annie Hogler
 D. Gary & Karen Hogue
 Pres & Cindy Holmes
 Carolyn G. Holt
Stanley & Betty Holzhauer - F
 Fred & Kristine Homburg
 Robert B. Honer
 Anne Honhart
 Pam & Mike Hooker
 Lynn Hopkins
 Mel & Marlene Hopp
 Nancy & Allen Horstman
 Virginia L. Horton
 Dale & Karan Hosler

Mary L. Hotson
 John Houk
 Loren H. & Lynette O. Houtman
 Arline L. Howe
 Beth Howe
 Gary Howe
 Phyllis A. Howell
 Richard & Jean Hoxie
 James & Dawn Hubbell
Leo & Sharon Hughes - F
 Cindy and Douglas Hull - LC
 Dawn W. Humphreys
 John Hunt
 Ruth E. Hunter
Eileen M. Huntzicker - F
 Craig & Ginger R. Hupp
 Robert M. & Mary Hurley
 Alan & Lenore Hutchenreuther
Amy C. Hutchinson - F
Jerry & Carol Inman - F
 Gretchen and Ted Iorio
 ITW Foundation
 Isabel & Gordon Jackson
 James Jackson
 Laurence & Barbara Jackson
 Mark Jackson
Ronald & Janet Jackson - F
 John & Ann Jacobs
 Thomas Jaenicke & Kim Kolb
 Dave & Chris Jahr
 Robert & Mary Jaklevic
 Gary & Karen Janes
 Lee & Shirley Janssen
 John & Amy Jass
 Jennifer Jay & Evan Johnstone
 David & Christine Jaymes - LC
 Alice A. Jeffers
 Marti Jeffs
 Hollis & Karen Jencks
 Kathy Jenkins
 Sue Jennings
 Mark Jensen
 Phyllis Jensen

David C. Jeschke	Phoebe & Anthony Klain	Jennifer Lamborne	Robert Logee - F	Terry & Sally Malone - F
Gary & Carol Johnson	Molly & Charles Klettner	Rammond Landes & Melisa McBrien	Wendy Loncar	Dan Maloney & Barbara Soricelli
Kim & Margaret Johnson	Ms. Mary E. Knebel	Martha Landis	James & Donna Long	Tad & Brenda Malpass
Mark E. Johnson	Lewis B. & Deborah A. Knecht	Vic & Amy Lane	John W. Long, D.O.	Gerard T. Mandziuk
Ronald & Sharon Johnson	Nancy P. & Suzanne I. Knecht	David & Louise Lantz	Ellen Longmire	The Manitou
Paula A. Jonas	David N. Knight	Gordon & Veronica LaPointe - F	Dale & Judy Lopus	Sally & Patrick Manke
David & Nancy Jones	Dr. Robert & Dorothy Kobs	Pamela Larkin	Staton & Carol Lorenz	Dale & Marie Mankin
Debbie Henn Jones	Linda Koebert	Lynn M. Larson	David & Beverly Lotz	Michael & Mary Manning
Molly & William Jones	Don R. Kogut	John H. & Mary Anne Larzelere	J. Ron Lovasz	Anthony Marchio
Norman & Judith Jones	Charles & Susan Konieczny	Joey Latterman	Norman & Olga Lovell	James & Evelyn Marchio
Philip & Susan Joseph	Lucy Anne Kooi	George & Margaret Laubach	Dr. James Low & Louise Anderson Low	Richard & Lori Marl
Steve A. Juday	Don & Mary Kay Korty	Charles & Dorothy Laufer	Susan Lowenberg	Barbara & John Marshall
Loren Judge & Patricia OConnell	Richard Kosinski & Deborah Ochs	David & Jane Lawrence	Clarence & Dwilla Lubahn	David Martin
Juniper Garden Club	Mark & Eileen Koslen	Hazel Lawrence	Katy Luchini & Dirk Colbry - LC	Porter & Carren Martin
Thomas & Sarah Juntune	Mark & Debra Kosowski	Jennifer & James Lawrence, Jr.	Ray & Nancy Ludwa	Greg & Colleen Maryanski
Raymond and Beverly Jusick	Stan Kozlowski	Maryln & Gordon Lawrence	Albert Ludwig	Kenneth & Kathleen Masck
Linda S. Kao	Ted Kraimer	David & Marty Leavenworth	Nancy & John Lukasiewicz	Sonja Mast
Carol & H. Peter Kappus	Joanne & John Kreag	Marilyn Ledebuhr - F	Jane Lund - F	Emily E. Matteson
Peg Kauffman - F	Eileen Kreiner	Carole & Willie Lee	Ben & Sally Lundquist	James & Phyllis May
Dennis and Lois Kavanagh	Linda Krieger	Leffingwell Forest Preserve Association	Charles Lundstrom	Jack & Joann Mayer - F
Richard & Linda Kegg	Edmund & Anne Krigbaum - F	Robert R. Leger	Gregory & Susan Lyman	Mike & Linda Mayer
Bill & Nancy Lou Kelly	David & Linda Krill	Paula S. Leinbach - F	Donald & Norma Lynch	Monte & Nina Mayes
Louise Kelly	Jeff Kroeger - F	Susan & George Leonard	Roy & Asta Lynch	Pauline M. Mayo
Robert & Judith Kelly	Warren Kruger	Joseph & Betty Lepak	Will & Barbara Lynch	Brian & Catherine Maywood
Thomas Kelly	Dennis & June Krus	Lori & Mark Leugers	Nancy & Bayard Lyon	John & Havalala McCall
Ellen C. Kelso	William & Mary Kubat	Carol & Danny Levin	Peter & Janet Lyon	Robert & Judith McCall - F
George & Joyce Kempton	Karen W. Kuehlhorn	Robert & Margaret Levine - F	Roger & Barbara Lyon	Beverly A. McCamman - F
Richard & Lynne Kercher - F	George & Betty Kuhn	Dorothy & John Lewis	Mary MacDowell	Daniel & Patricia McCarthy
Jessica Kerfoot	Robert & Kelley Kuhn	Jack & Ann Lewis	Constance & Dan Macek	John & Suzanne McCarthy - F
John & Donna Kessler - F	Susan & Duane Kullberg	Richard & Colleen Lewis	Thomas & Lois A. MacGregor	Kathleen & Thomas McClanaghan
Donald & Sharon Kieliszewski	Jeff & Kelly Kurburski	Richard & Sally Lewis - F	Douglas & Eleanor P. MacKinney	Gloria McClay - F
Janet Killian - F	Rodney & Christine Kurtz - F	John & Cynthia Lhost - F	Richard J. Maddin	Jack & Barbara McClellan - F
Theodore & Janet Kilmer	Ruth Kurtz - F	Zach & Misaeng Liggett	Mark Maddox & Sarah Sutton	Merwin & Janilyn McConnell
Douglas Kimble	Stanley W. Kurzman - F	Lisa Lightfoot	Deborah & Daniel Magennis	Will & Carole McCord
Karen & Joe Kimmell	Jim & Pat Laarman	Tony & Marilyn Ligi	John & Sue Ann Makinen	Lawrence & Margaret McCormick
Jeffrey & Julie Kimpton	James Lagowski	Lance & Mary Lindwall	Sarah & Terence Malone	Michael & Sandra McDonald
John & Jaqueline Kindra - F	Kenneth & Diane Lahti	Barbara Link		
Robert & Karen Kingon	Bruce & Andi Laidlaw	Sig Linn & LuAnn Orbeck		
Darrell & Shirley Kinnan	Bob Finch & Melissa Lain- Finch	Frederick & Janice Linsell		
Jeff Kirby	Joan & Benjamin Laird	Jay A. Lively		
Thomas & Leah Kirchner	Robert E. Lakey	Thomas & Lucy Lloyd		
Joyce Kirshner	Susan Lamb			
Tom Kirwin				
Rhea K. Kish				

F **Bold** entries indicate founding donors who gave their first gift to the Conservancy between June 1, 1991 and December 31, 1992.

LC Indicates donor is a Land Champion, making monthly gifts to the Conservancy.

VS Indicates donor is a member of the Vanguard Society and has made a planned or estate gift to the Conservancy.

Patrick & Coleen McDonald	Elnora Milliken	Kenneth & Patricia Musson - F	Alden & Barbara Olson	Miles Peterle
Ed McDuffie	James & Mary Beth Milliken	Katie Myers	J. Thomas & Regina O'Reilly	Elmer & Ruth Peterman
Chloe McGehee	Donald & Elizabeth Millington	Roger & Martha Myers	Mary Lee Orr	Jean G. Peters
Jim & Joan McIntyre	Claud A. Mills	Susan A. Myers	Thomas & Mary Osborn - F	Mary B. Peters
Dan & Lucy McKeen	Mary Agnes Mills	Yvonne A. Myers	David & Renee Osgood	Monnie Peters
Thomas & Bonnie McKeirnan	James & Peggy Miner	Mark Nadolski	Todd & Ann Ousley	John & Kathy Peterson
Melisa McKolay	Susan Miner	Diantha & Bob Naftali	Fred & Ruth Overdier	George Petritz - F
Kate McKune & Cullen Lowery	Genevieve & Ben Minor	Ernest & Marilyn Nagy	Donald & Christine Owen	William & Jane Pettis
Jane McKune - LC	Michael & Mary Mintz	Richard & Cheryl Naperala - F	Kipp Owen	Jay S. Pettitt - F
Joan McLay	Lisbeth & Paul Mitchell	Andrew & Trish Narwold	P.E.O. Sisterhood	Pfizer Foundation
Rosalie McLenithan	Samuel & Karen Mitchell	Donald & Janet Nelson	Don & Peggy Palmer	Denny Phillips - F
Thomas & Shirley McLenithan	Larry & Carolyn Moats	John Nelson & Lynne Moon	Gloria Palomeno	John & Yvonne Phillips
Nick & Mary Jean McMaster - F	Margaret & Henry Moczul	Judith A. Nelson	William & Mary Ann Parker - F	Paul & Jennise Phillips
Thomas & Sue McNally	Andrew Modlin	Mark & Sandy Nelson	Scott & Frances Parry	Scott & Pam Phillips
Pat & Karen McNamara	Edward & Carolyn Moehle	Michele Nelson	Rob Parsons	Stephen L. Phillips
Stephen & Kathleen McShane	Peter & Sharon Moller	Thomas & Joy Nelson	Glenn & Catherine Pascoe	Steven Philips
Mrs. Mary A. Meanwell	Maxine, Gary & Sam Mondshine	Valerie Nelson	Paul & Violet Patchen - F	Kenneth A. Pickering
Dawn Meihn	Clifton & Nancy Monteith - F	G. Patrick & M. Judy Nerbonne	Charles & Joan Patton	Robert W. & Ann H. Pike - VS
Lisa Meleski	Donald Moon	Michele & Joe Nerone - F	Marguerite Paul	William & Mary Pinkerton - F
Elizabeth Melkild	Cynthia Moore	Mary Ellen Newport	Penelope W. Paulley	Kathleen Pirich & Matthew Sorys
James & Mary Virginia Mellow	Margaret Moran	Charles & Cynthia Newton	Ryan & Kate Paulson	Margaret Platner & Gerri Erickson
Dorothy Melotti	Dorothy W. Morof - F	David & Laurie C. Nichols - F	Kathryn & Marco Pazienza	Marie Plester
Rita Melotti & Andrew Bishop - LC	Robert & Marellene Morrell	Ray & Paula Nichols - VS	The Peacock Family	Patricia Pokay & Linda Grandstaff
Mrs. Allan Melvin	Herbert Morris, Jr.	Shirley & Jerry Niemi	Eric Pearson	Kristin Poole
Julian & Victoria Mendoza	Dr. James E. Morris	John & Marilyn Niesen	Kate Pearson & Steve Cruzen - LC	Deb & Mark Posthumus
James Meredith & Roberta Lindeman	Richard & Elizabeth Morris	Alfred Nippert	Diane & Thomas Pederson	William & Colleen Potthoff
Rebecca S. Mericle - F	Duncan & Toni Morrison	Skip & Mary Lou Noble	Henry & Sally Peet	Mr. William Prakken
David & Jan Merrell - F	John & Victoria Moseley	Timothy & Vicki Nolan	Janice Peploski	Allen Pratt
Brent Merriman	Sam & Tressa Mucci	Daniel Norbeck	Steve H. Perdue, GTP Industries - LC	Mary C. Pratt - LC
Constance F. Metcalf	Anne Mudgett & Scott Fergusson - LC	Richard & Sondra Nordin	Elizabeth A. Perkett	Woneta & Robert Prenger
Robert & Adeline Metzger	Linda Mulder	Doris E. Norling - F	Perry Electric Inc.	
Amy & Dan Meyer	Amy & Sean Muldoon	Rebecca M. Norris		
Kenneth & Daniel Michelson	Patrick & Christine Muldoon	James North		
Susan Michener	Richard & Marilyn Mumaw - LC	Sheri Novak/Tiny Toes Travel		
Mr. Norman Mientkiewicz	Carol & Henry Mundie	Ronald & Ruth Nugent - F		
Kathryn Miller	Molly Murbach	Melissa & Shawn O'Brien		
Myron & Judith Miller	Joanne & Joseph Murphy	Bruce & Cathy Odom		
Peter Miller	Sharon Murphy	Frederick Oeflein		
Wayne & Jane Miller	Edson W. Murray - F	Sam & Ellen Offen		
Helen G. Millhouse	Joan Murray - F	Robert & Ann Ogur - F		
	William G. Murray	Louis & Linda Okma		
	Rich & Elizabeth Murrell			



PHOTO BY ANGIE LUCAS

Lloyd & Shirley Preston	Palma Richardson	Vaira Rozentals	Greg & Joanne Schnesk	Dianne & John Shullenberger
Alfred Priebe	Dianne & Howard Richter	William & Patricia Rudolph - F	Frank & Jan Schollett	Gail Shulman
David & Joan Pritchard	Fred & Virginia Richter - F	Donald & Fernmarie Russell	Aaron & Margaret Scholnik - F	The Siebenthaler Foundation
Elizabeth E. Proulx	Rickert Family Foundation	Richard & Phyllis Russell	Miriam S. Schreck	James & LaRayne Siegmann
Charles & Suzanne Pryde	Helen L. Riendeau	Gretel G. Rutledge	Maria Schrems	David Simpson & Anne Pawlak-Simpson
Emerson & Elizabeth Pugh - F	Sam & Angie Riffell - F	Donald & Diana Ryan	Douglas & Judith Schroeder	Howard & Kathryn Simpson
Robert & Connie Pulcipher	David & Ann Rigney	George, Carolyn & Tucker Ryckman	Phyllis & Paul Schroeder - F	Kimberly Simpson
Bonnie Purvis - F	Robert & Nancy Riker	Alena Sabourin	Wallace & Patricia Schroth	Freeman & Arlene Sims
Oscar Puryear	George & Shirley Rinder - F	Robert & Cynthia Saddler	Susan Schuler - F	Eugene & Kathleen Sinclair
Marilyn A. Quick - F	Mandy Sue Rineer	Daniel & Donna Sagady	Glenn & Cathy Schulz	Jack W. Sinclair
Larry Quimby	Riney Robert & Sandra Bowman- Riney	David & Carol Sagaser	Katherine & Steven Schultz	James & Shannon Sitek
Robert & Elaine Rabideau - F	Heather Rinkel - LC	Donald Sagaser - F	Don Schuster	James & Patricia Skifstad
John & Linda Racine	Constance Riopelle	Jerome & Brenda Sage - F	Earl & Georgann Schuster	Bill & Julie Skinner
Ruth E. Radomski	Richard & Janet Robb	James & Verna Sak - F	Helene J. Schwartz	Mary Ann Slazinski
Deb & Rob Rafferty	James & June Robberts	Kristin & John Sak	Susan D. Schwartz	Helen Smeltzer
Randal Rake	James & Charlene Roberts	Marybeth & Gary Salowich	Frederick & Priscilla Schwier	Evan Smith
David & Laurie Randall	Alexander Robinson	John & Suzette Sanborn - LC	Bill & Irene Scott	Glenn & Marilyn Smith
George W. Randall	Katherine Robinson & Jayme Lahut	Richard & Patricia Sanderson	Helen Scott	J. Melvin & Barbara Smith
James & Lisa Randall	Theodore & Maureen Robinson	Rocco & Teresa Sapienza	John & Gloria Scott	Jack & Gail Smith
John A. Ransom	Michael & Libby Robold - LC	Connie A. Sargent	Sharon Scranton	Mark & Ann Smith - F
Herbert & Katherine Ranta	Larry & Elaine Rochon	Edna A. Sargent	John & Susan Seaman - F	Matthew & Denise Smith
Ross & Shelly Rapaport	Rockville Pregnancy Center	Donald & Margaret Sarna	Blaise Sedney	Shawn Smith
Arnold & Joan Ratkowski	Gordon Rockwell	Constance Sarya	Richard A. Selleck - F	Patrick Smolinski
Ricki Ravitts	Charles & Sara Rodeck	Mike & Nancy Sauve	Thomas B. A. Senior	Brian Sniokaitis
Lynn & June Rayle	John & Julie Rodes	Fred and Lisa Sawyer	Bernard & Phyllis Senske	John Snodgrass & Janet Fleshman
Bradley & Marilyn Raymond	Nancy Rodriguez	Kay & Marvin Saxton	Robert & Shirley Sevenser - F	Mrs. Margaret A. Soderberg
Dave & Sue Reck	Ann M. Rogers - F	Vincent & Kathryn Scanio	Chris & Michele Shafer - VS	Steve & Pat Somers
Richard & Leslie Redmond	Edward & Elyse Rogers - F, VS	Dorothy Schaefer	Benjamin & Shari Shambaugh	Paul Sorum
Charles & Mary Reed	Sally L. Rodgers - LC	S. Philip Schaffner	George & Jaqui Shambaugh	Richard & Diana F. Sosnowski
Jim & Barb Reed	Steven & Linda Rogers	William C. Scharf	George & Roberta Shambaugh	Philip & Barbara Spangenberg
Patricia & William Reed	Mary Rohn	Allen & Marilyn Scheck - F	Linda & Stuart Sharp	W.R. Spayde
Richard P. Reed	Richard Romanowski	Gary Schimmel	Matt & Jennie Shaw	Joseph & Arleina Spino - F
Ruth Reeve	Joyce Rombouts	Theresa M. Schleede	Faye Shaw - F	Steven & Naomi Sponable
Charles C. Reeves - F	Craig & Mary Rosenberg	Louise M. Schlieff	William & Maridel Sherk	Julie Spoto
Greg & Terri Reisig - F	John Ross - F, VS	Logan H. Schlipp - F	Timothy & Sharon Sherrow	John & Elizabeth Sprague
Dr. Nancy Reye & Mr. Rob Dolinka - LC	Raymond & Ricky Ross	Neill & Joan Schmeichel - F	Susan Shimmons	Jerome Springer - F
James & Kathleen Rice - F	Walter & Pat Ross - F	Pete & Mariann Schmitt	Robert D. & Monna Short	William & Patty Springstead
Kip & Mary Anne Rice	James & Brenda Rossi	Richard & Jennie Schmitt		
Gilbert & Mary Richards - F	John & Barbara Rothhaar	Carl Schmult		
Mary A. Richards	Ken & Sue Rottet	Jane & Fred Schneider		
Clark S. Richardson	Deborah Rough	John & Elizabeth Schneider		
Jon D. Richardson	Fred & Muriel Rounds	Molly Schneider		
Karen Richardson		William & Judith Schneider		
Merrick Richardson				

F **Bold** entries indicate founding donors who gave their first gift to the Conservancy between June 1, 1991 and December 31, 1992.

LC Indicates donor is a Land Champion, making monthly gifts to the Conservancy.

VS Indicates donor is a member of the Vanguard Society and has made a planned or estate gift to the Conservancy.

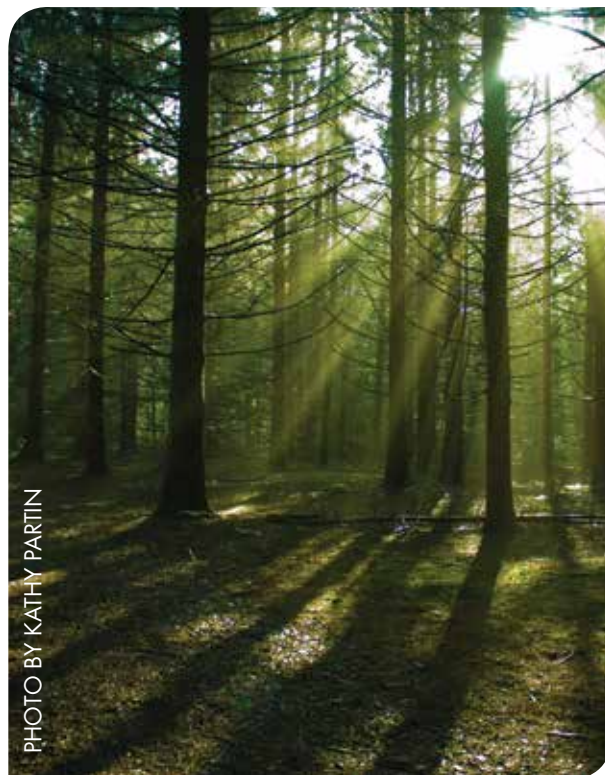
Peter & Barbara Springsteen Family	Steven & Debra Styers	Thomas & Diane Todd - F	Pamela & William Vredevoogd	Dale & Barbara Wentzloff
Ron & Dee Springsteen	Doris & Joe Suarez	William & Christine Toole	Robert & Nellie Vroman	Pamela M. Wenzel
Michael & Sharon Stack	Chris & Ali Sullivan - LC	Richard & Anne Tooley	W W Group, Inc.	Edwin & Jacklyn Werner
Linda & Leo Stallman	Roger Sullivan	Martha Topol & David Kirby	Sidney & Susan Wagner	Carl & Mark Werts
John Stamm	Shirley S. Summers	Andrew Topper	Kent & Suzanne Walker - F	Thomas Wertz
Jim & Jill Stander	Glenn Sundbeck	Thomas & Mary Torbet	Richard & Mary Walker	Janet West
Colette M. Stanish - F, VS	Jerry F. Sura - F	Torch Lake Protection Alliance	Donald & Ursula Wall	Tim & Colette Whalen
Gloria L. Stapp - F	James & Dona Sutherin - F	Traverse City Big Boy, Inc.	Ray Wall	Mac & Marilyn Whisner
David & Lynn Starkey	Ellen G. Suthon	Vicki M. Trent	Barbara Wallace	Jeff R. White
Larry Stecco	Judith & Gregory Sutton	Ron & Cynthia Tschudy	Ken & Joanne Walrad	Harvey White & Alice Lloyd - F
James & Kristin Steckley	Mark & Susan Sutton	Dan & Joanne Tubbs	James & Stephanie Walter	Laurence & Carole White - F
Thomas & Eugenia Steel	Sue & Kjell Svensson	Ralph & Phyllis Turner	Barbara & James Walters	Whiteford Associates Inc.
Steelcase Foundation	Gerald & Ann Swaney - F	Susan Ulbrich	Richard & Beatrice Walters	April & Michael Wiater
Fred & Mary Ann Stehr - F	James & Robbin Swaney	John Underwood	John & Kathy Walthorn	Mark & Ann Wiedelman - F
Robert & Grace Stein	Donald or Dolores Swanson	United Way of Washtenaw County	Steven Walton	Rick & Raj Wiener - F
John & Tina Steketee	Carolyn Swift	Beau Vallance & Jack Carpenter	Gene Wandel	Diane L. Wilbur - LC
Robert & Michelle Stephanoff	Philip & Susan Szurek	Van An del & Flikkema Motor Sales, Ic.	Robert & Helen Wangard	Wildtype Native Plant Nursery
Jason & Yvonne Stephens	Carl & Eleanor Tacke	Jerry & Sharon Van Kuiken	Lawrence & Jamie Warbasse	David P. Wilkins
Yvonne R. Stephens	R. Thomas & Sarah Tanner	Bill Van Petten	Doug & Ann Ward	Phyllis & Ron Wilkinson - F
Clarence & Catherine Stephenson	Joseph Taraskavage	Marcia Vandenbelt & James Cutler	Gary Ward - F	Warren & Margaret Wilkinson
Louise A. Sternberg	Philip & Susan Tarczon - F	Doug & Linda Vander Hoff	Margaret R. Ward	David & Judy Williams
Fred & Bettie Sterner	Catherine Ann Taylor	John & Jeanne VanderMeer	Dennis & Ann Wardowski	David & Roberta Williams
Kent & Ann Stewart	Ken & Nancy Taylor	Esther VanHammen	William & Di-Anne Warmbein	Jeanne & Jim Williams
D.W. & Joyce Stibbs - VS	Michael & Jacquelyn Teagan - F	Mr. & Mrs. A. D. VanMeter, Jr.	Anne Warren	Reatha Williams
Daniel Stiebel	Nancy and William Tebelman	Dana Vannoy - VS	Bonnie J. Warren	Bonnie K. Willings - F
David & Linda Stimpson	Kelly & Carolyn Thayer	Donald & Donna Varblow	Don & Sharon Watkins	Thomas & Gwen Willson
L. A. & Carol Stocking - F	The Peters Family	William & Barbara Vaughan	Flint & Patty Watt	Gary & Kathryn Wilson
Chuck Stockwell	Ron & Jane Theobald	'Those' Veseys	Price & Jane Watts - F	Lyle & Nancy Wilson
Beatrice Stone - F	Cyril & Jacqueline Thiel	Carl & Hazel M. Vespa	James & Sharon Wawrzyniak	Steven & Mary Wilson
Donald & Betty Stone - F	Carol Thomas	Alan & Bev Vicstein	Mary K. Weadock	Tom & Susan Wiltse
Deborah A. Storms	Deborah & Jean Thomas	Village Press - F	Kennard R. & Judith Weaver	James & Mary Winning - F
John & Eleanor Stottlemeyer	Randall & Susan Thomas	Barbara Vincent - F	Mark Weaver	Emma Winter
Harry & Elizabeth Stout	Bruce & Maurine Thompson - F	Ginny & Bill Vincent	Tim Webb & Gail Roberts	Kenneth & Marguerite Winter
Sue & James Strabel	Mary Thompson	John & Lynn Vinkemulder	Julie & Andy Webster	Alfred & Barbara Wishart
John & Marilyn Strader	Paul Thompson	Jack Vliet & Denise Plakmeyer	Kenneth & Pam Weddell	Gary & Margaret Withall
Ann Strehle & Barbara Skurdall	Richard & Nancy Thompson	Clifford & Frances Voice - F	Richard & Lucinda Weiermiller	Maurice & Elizabeth Witteveen
Judith A. Strickland - F	Robert & Patricia Thompson - F	Ralph A. & Margaret von Walthausen - F, VS	Bob & Maurine Weisenburger	Arthur & Shirley Wolfe - F
Margaret Strong - F	Margaret J. Thoms	Jacqueline & Gottfried Vonlinsowe	Darragh Weisman	Cameron & Fran Wolfe
Charles & Judy Stuart - F	John & Sandra Thorne	John & Maureen Voorhees	Mitchell Weiss	Shirley Wolfe - F
John & Irene Stuart	John J. Timmer	Michael & Lisbeth Votruba	Doug & Cheryl Welday	Wendy Wolfe & Paul Wawrzynnek - F, LC
Bob Stuber	John & Janet Tinnette		Flora E. Wellman	Edward & Mary Wolking
Stucki Family Foundation	Frederick & Diane Tinsey		Donna & Bill Weltyk	Dan Wolter
Marvin & Carol Studinger	Mrs. Samuel P. Todd, Jr.		Peg Lawrenson & Steve Wentworth	

Randi Woodworth	Jonathan & Misty Youngson	John & Jacquelyn Zimmerman
Greg & Desiree Worthington	Nancy J. Yuhn	Liz & Scot Zimmerman
Douglas & Margaret Wozniak	Garry Zachritz	John and Suzanne Zinser
Frank & Lois Wright	Richard L. Zaebst	Michael & Ann Zipser - F
Carl Wroubel - F	Bruce & Diane Zeeuw	Stephen Zirkle
John Wunsch & Laura Wigfield - F	Joseph G. Zepf	Paul & Barbara Zitzewitz
Dennis & Jan Wyckoff	Gary & Jean Ziegler	Jay Zollinger
John & Janet Wyrwas	Sandra Palmer Zilincik	Robert & Greta Zwinck
Laura Yeo	Barbara A. Zimmerman	

F **Bold** entries indicate founding donors who gave their first gift to the Conservancy between June 1, 1991 and December 31, 1992.

LC Indicates donor is a Land Champion, making monthly gifts to the Conservancy.

VS Indicates donor is a member of the Vanguard Society and has made a planned or estate gift to the Conservancy.



SPRING HIKES & EVENTS SCHEDULE

Nurturing Connections Between People, The Land, and Our Mission

TRAIL BUILDING AT GLACIAL HILLS PATHWAY AND NATURAL AREA

EVERY FRIDAY, APRIL–OCTOBER | 10-12:00 PM

In partnership with Forest Home Township, Antrim County, and dozens of volunteer groups and individuals, we've built 12 miles of sustainable, multi-use trail. This year our goal is to build 8 more miles and we need volunteer trail builders to make it happen. Come join us and learn about the techniques and theory behind sustainable trail design, construction and layout.

ARCADIA MARSH BIRDING HIKE

APRIL 20 | 8:00 AM Sponsored by the Benzie County Audubon Society and led by Brian Allen and John Ester.

WATCH OUR WEBSITE FOR SPECIAL EARTH WEEK EVENTS!

SPRING WILDFLOWER HIKES IN PETE'S WOODS

MAY 1 & 8 | 10-12:00 PM The flowers are showing off and Pete's Woods is *THE* place to see them!

HIKE THE PROPOSED TIMBERS RECREATION AREA

MAY 4 | 10-12:00 PM Get a sneak peak of this stellar property and learn about the effort to protect it.

HIKE, BIKE AND RUN AT GLACIAL HILLS PATHWAY AND NATURAL AREA

MAY 4 | 10-12:00 PM Join our staff for a guided hike, bike or run!

PRESERVATION CELEBRATION AT THE PROPOSED TIMBERS RECREATION AREA ~ JULY 18TH

Keep an eye on our website for details of this community event held at an active land protection project. Kayaking, hiking and more are all on tap for the day. Time and details to be announced.

VISIT MISTY ACRES TO SEE THE NEW CALVES AND HIKE THE INCREDIBLE NEW TRAIL

Date in May to be announced at www.gtrlc.org/events



3860 N. Long Lake Rd., Ste. D
Traverse City, MI 49684
231.929.7911
GTRLC.ORG

NON-PROFIT ORG.
US POSTAGE PAID
TRAVERSE CITY, MI 49684
Permit No. 306



“ ”

*A note of gratitude to all our donors
and volunteers ~*

*The work we do would simply not
be possible without you. We are so
grateful for your generous gifts and
your precious time. You have helped
create a legacy you can be deeply
proud of and we are grateful.*

Sincere Regards,

 *The Staff and Board of GTRLC*

PHOTO BY ANGIE LUCAS