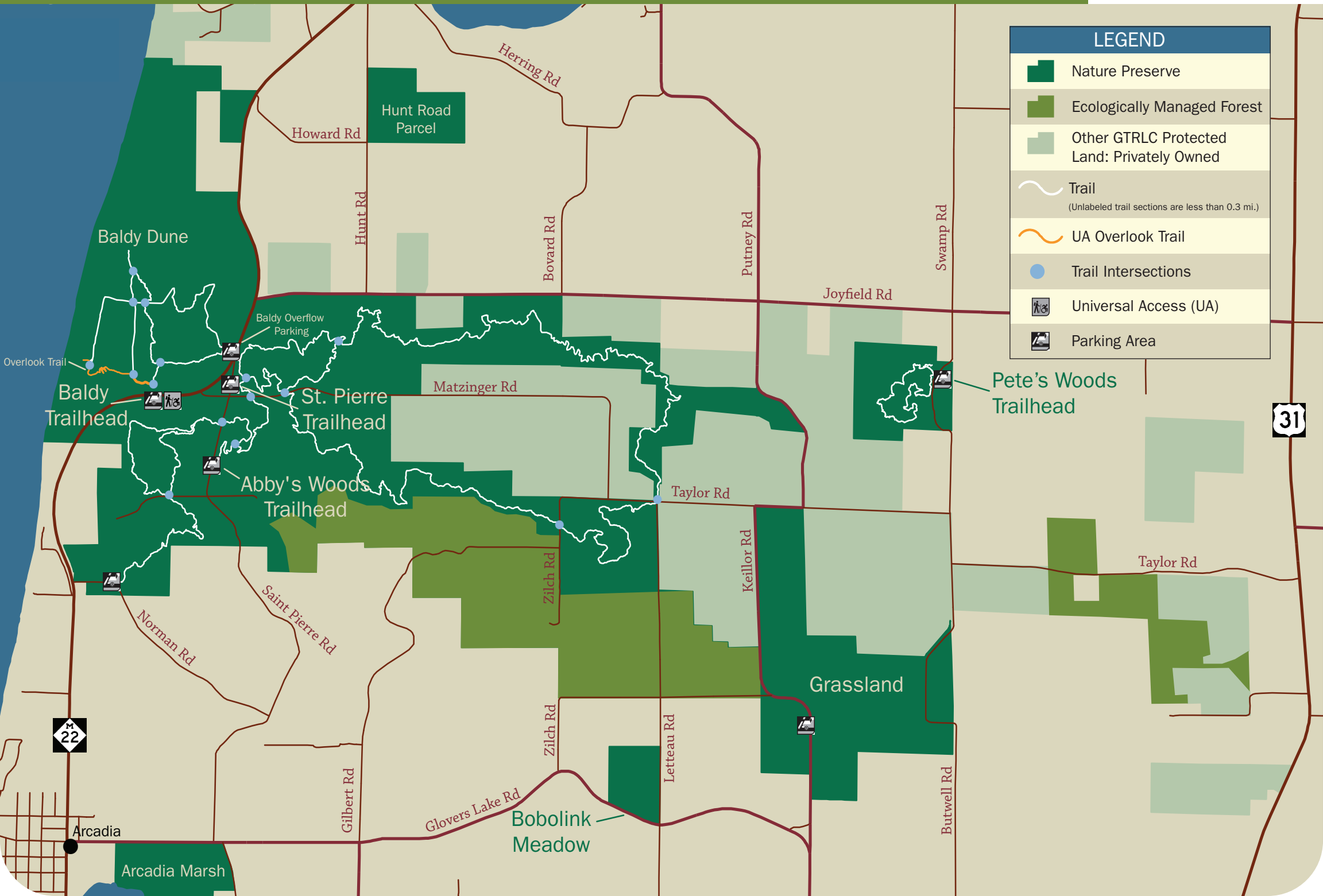


ARCADIA DUNES: THE C.S. MOTT NATURE PRESERVE



PROTECTING SIGNIFICANT NATURAL, SCENIC, AND FARM LANDS—AND ADVANCING STEWARDSHIP—NOW AND FOR FUTURE GENERATIONS

GTRLC.ORG



LEGEND	
	Nature Preserve
	Ecologically Managed Forest
	Other GTRLC Protected Land: Privately Owned
	Trail <small>(Unlabeled trail sections are less than 0.3 mi.)</small>
	UA Overlook Trail
	Trail Intersections
	Universal Access (UA)
	Parking Area

ARCADIA DUNES: THE C.S. MOTT NATURE PRESERVE

Baldy Trails



PROTECTING SIGNIFICANT NATURAL, SCENIC, AND FARM LANDS—AND ADVANCING STEWARDSHIP—NOW AND FOR FUTURE GENERATIONS

GTRLC.ORG



LEGEND

- Nature Preserve
- Protected Land: Privately Owned
- Parking
- Steep Slopes
- Hiking Trails
- Hiking Trails, No Bikes
- UA Trail
- Intersections/ Trail Maps
- Scenic Views

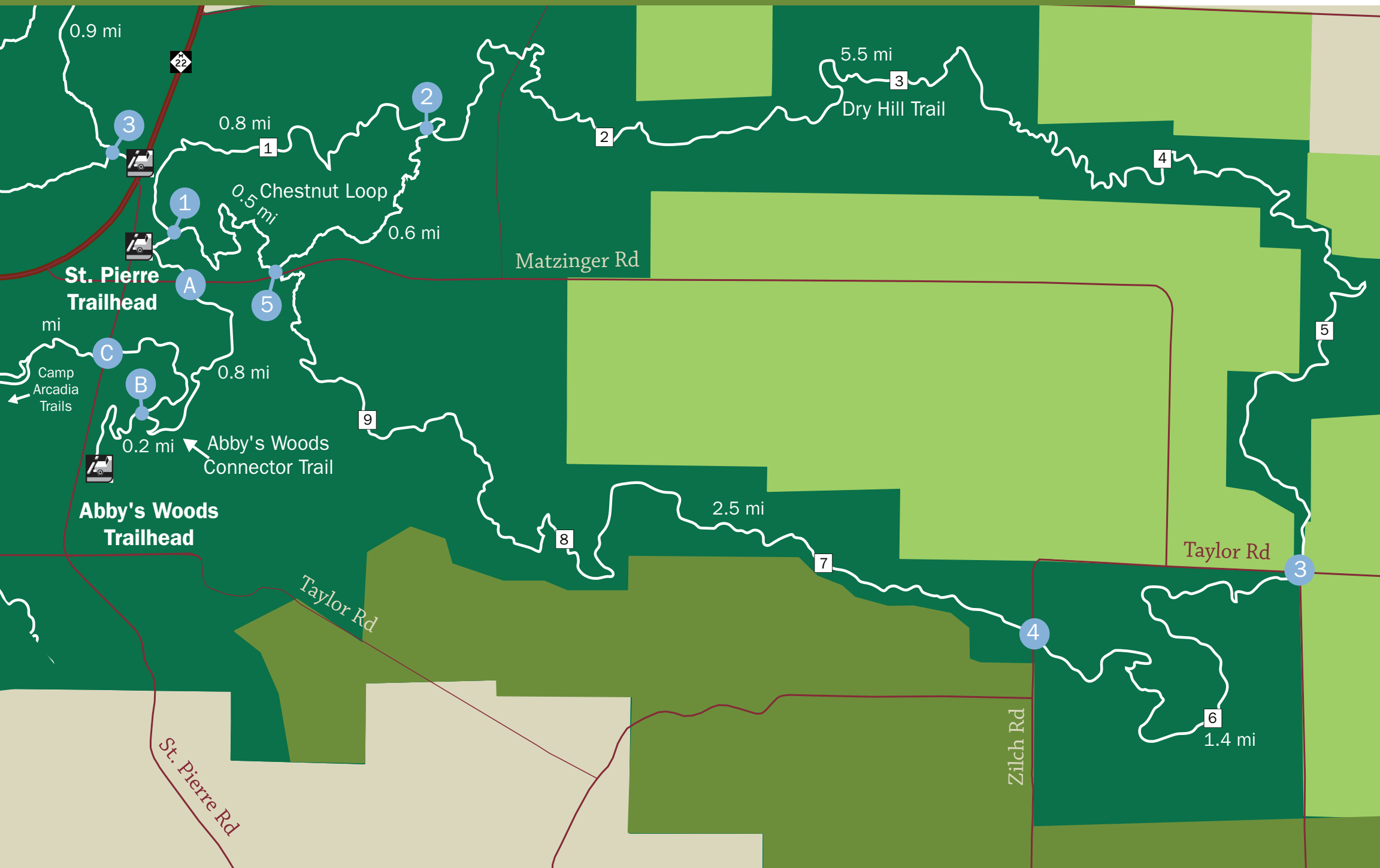
ARCADIA DUNES: THE C.S. MOTT NATURE PRESERVE

Dry Hill Trails



PROTECTING SIGNIFICANT NATURAL, SCENIC, AND FARM LANDS—AND ADVANCING STEWARDSHIP—NOW AND FOR FUTURE GENERATIONS

GTRLC.ORG



LEGEND

- Nature Preserve
- Protected Land: Privately Owned
- Ecologically Managed Forest
- Parking
- Intersections/ Trail Maps
- Hiking Trails
- Emergency Location Marker

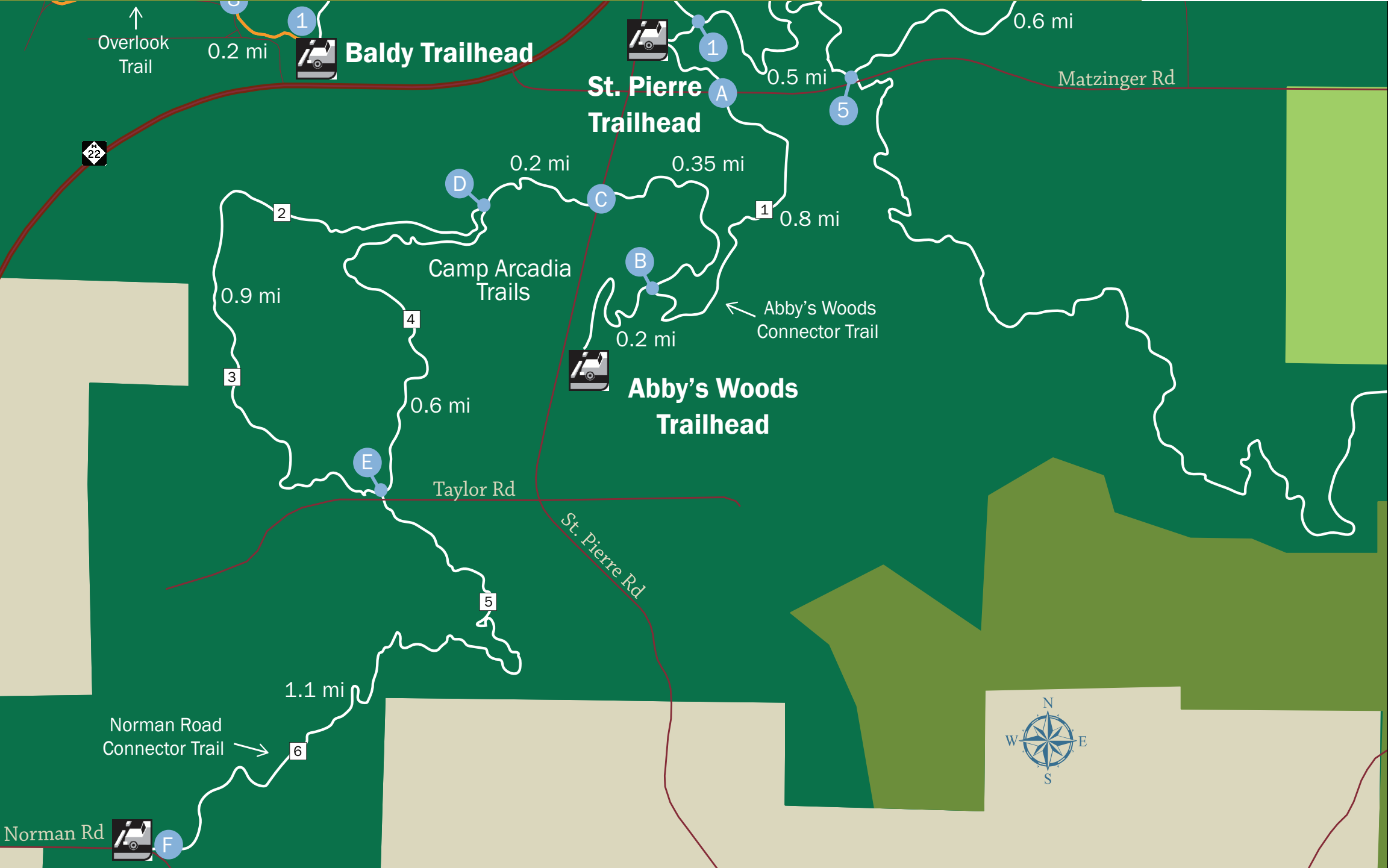
ARCADIA DUNES: THE C.S. MOTT NATURE PRESERVE

Camp Arcadia Trails



PROTECTING SIGNIFICANT NATURAL, SCENIC, AND FARM LANDS—AND ADVANCING STEWARDSHIP—NOW AND FOR FUTURE GENERATIONS

GTRLC.ORG



LEGEND

- Nature Preserve
- Protected Land: Privately Owned
- Ecologically Managed Forest
- Parking
- Intersections/ Trail Maps
- Hiking Trails
- Universally Accessible Trail
- Emergency Location Marker

ARCADIA DUNES: THE C.S. MOTT NATURE PRESERVE

Pete's Woods Trail

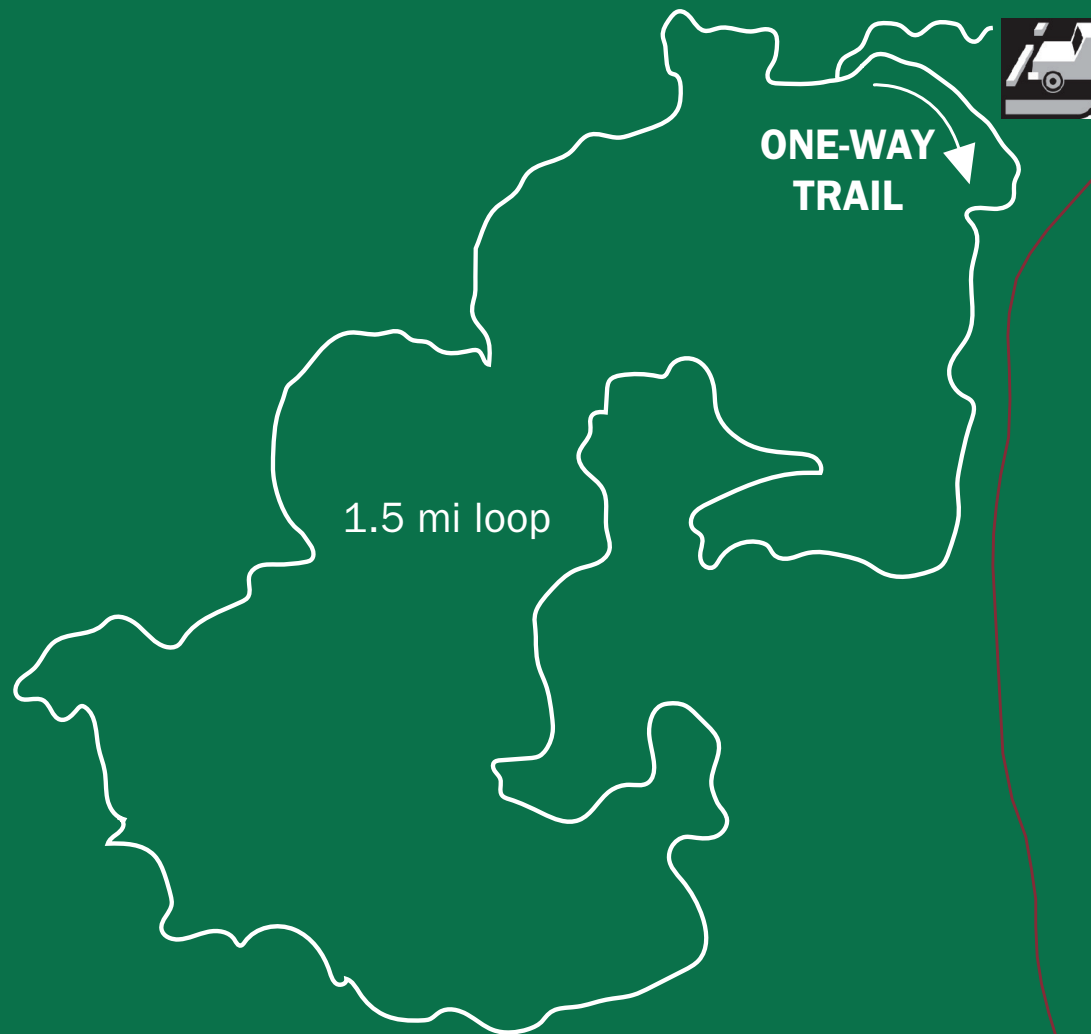


PROTECTING SIGNIFICANT NATURAL, SCENIC, AND FARM LANDS—AND ADVANCING STEWARDSHIP—NOW AND FOR FUTURE GENERATIONS


GTRLC.ORG





Swamp Rd



LEGEND

 Nature Preserve

 Parking

 Hiking Trails