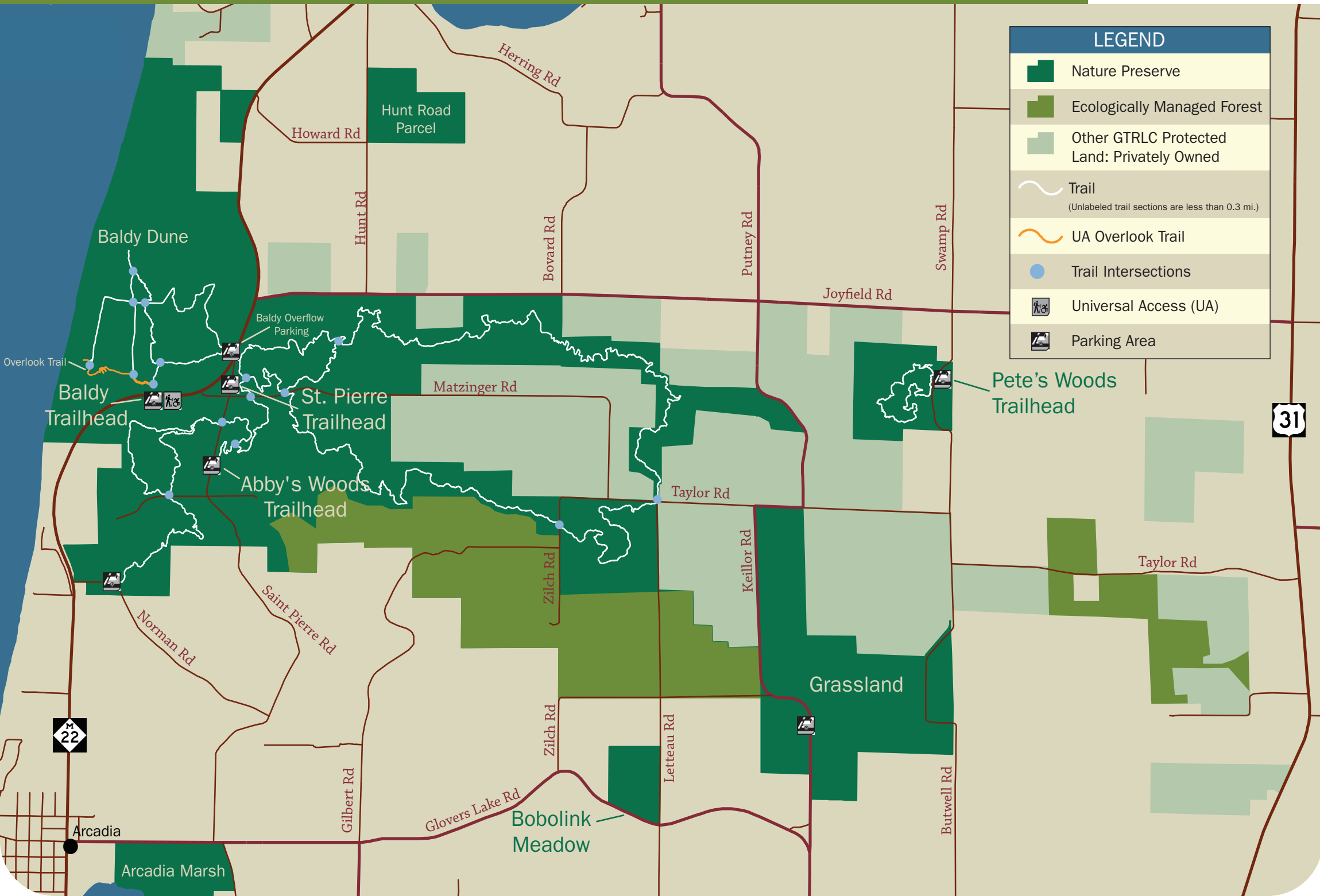


# ARCADIA DUNES: THE C.S. MOTT NATURE PRESERVE



PROTECTING SIGNIFICANT NATURAL, SCENIC, AND FARM LANDS—AND ADVANCING STEWARDSHIP—NOW AND FOR FUTURE GENERATIONS

GTRLC.ORG



LEGEND	
	Nature Preserve
	Ecologically Managed Forest
	Other GTRLC Protected Land: Privately Owned
	Trail <small>(Unlabeled trail sections are less than 0.3 mi.)</small>
	UA Overlook Trail
	Trail Intersections
	Universal Access (UA)
	Parking Area



Arcadia

Arcadia Marsh

Bobolink Meadow

Grassland

Pete's Woods Trailhead

Baldy Trailhead

St. Pierre Trailhead

Abby's Woods Trailhead

Baldy Dune

Hunt Road Parcel

Howard Rd

Herring Rd

Hunt Rd

Bovard Rd

Putney Rd

Swamp Rd

Joyfield Rd

Matzinger Rd

Taylor Rd

Taylor Rd

Norman Rd

Saint Pierre Rd

Zilch Rd

Keillor Rd

Gilbert Rd

Glovers Lake Rd

Letteau Rd

Butwell Rd

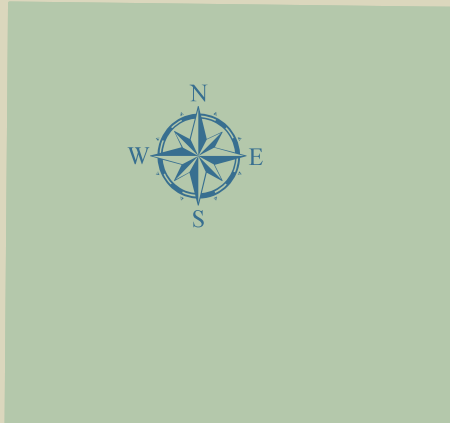
# ARCADIA DUNES: THE C.S. MOTT NATURE PRESERVE

## Baldy Trails



PROTECTING SIGNIFICANT NATURAL, SCENIC, AND FARM LANDS—AND ADVANCING STEWARDSHIP—NOW AND FOR FUTURE GENERATIONS

GTRLC.ORG



### LEGEND

- Nature Preserve
- Protected Land: Privately Owned
- Parking
- Steep Slopes
- Hiking Trails
- Hiking Trails, No Bikes
- UA Trail
- Intersections/ Trail Maps
- Scenic Views

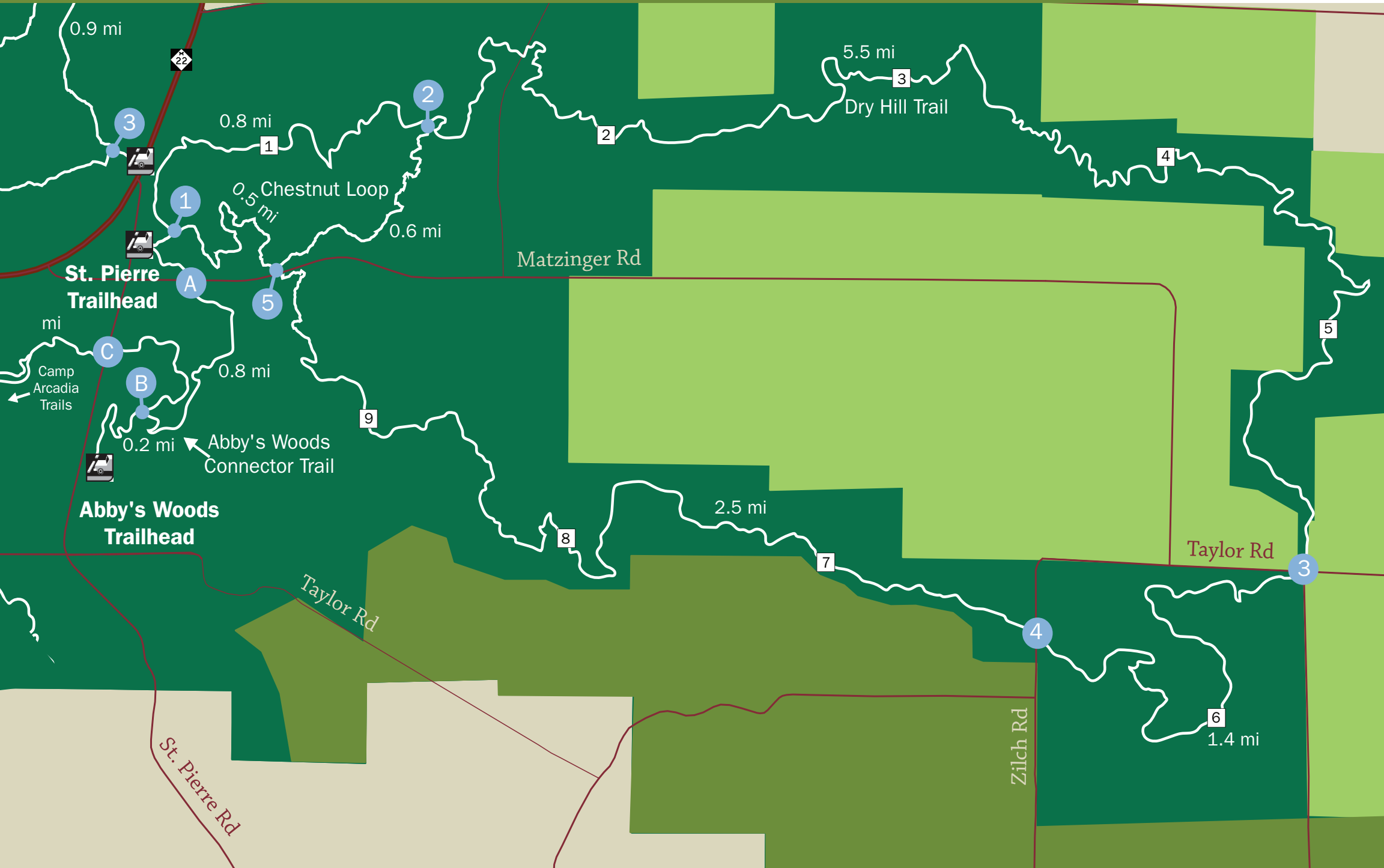
# ARCADIA DUNES: THE C.S. MOTT NATURE PRESERVE

## Dry Hill Trails



PROTECTING SIGNIFICANT NATURAL, SCENIC, AND FARM LANDS—AND ADVANCING STEWARDSHIP—NOW AND FOR FUTURE GENERATIONS

GTRLC.ORG



### LEGEND

Nature Preserve

Protected Land: Privately Owned

Ecologically Managed Forest

Parking

Intersections/ Trail Maps

Hiking Trails

Emergency Location Marker

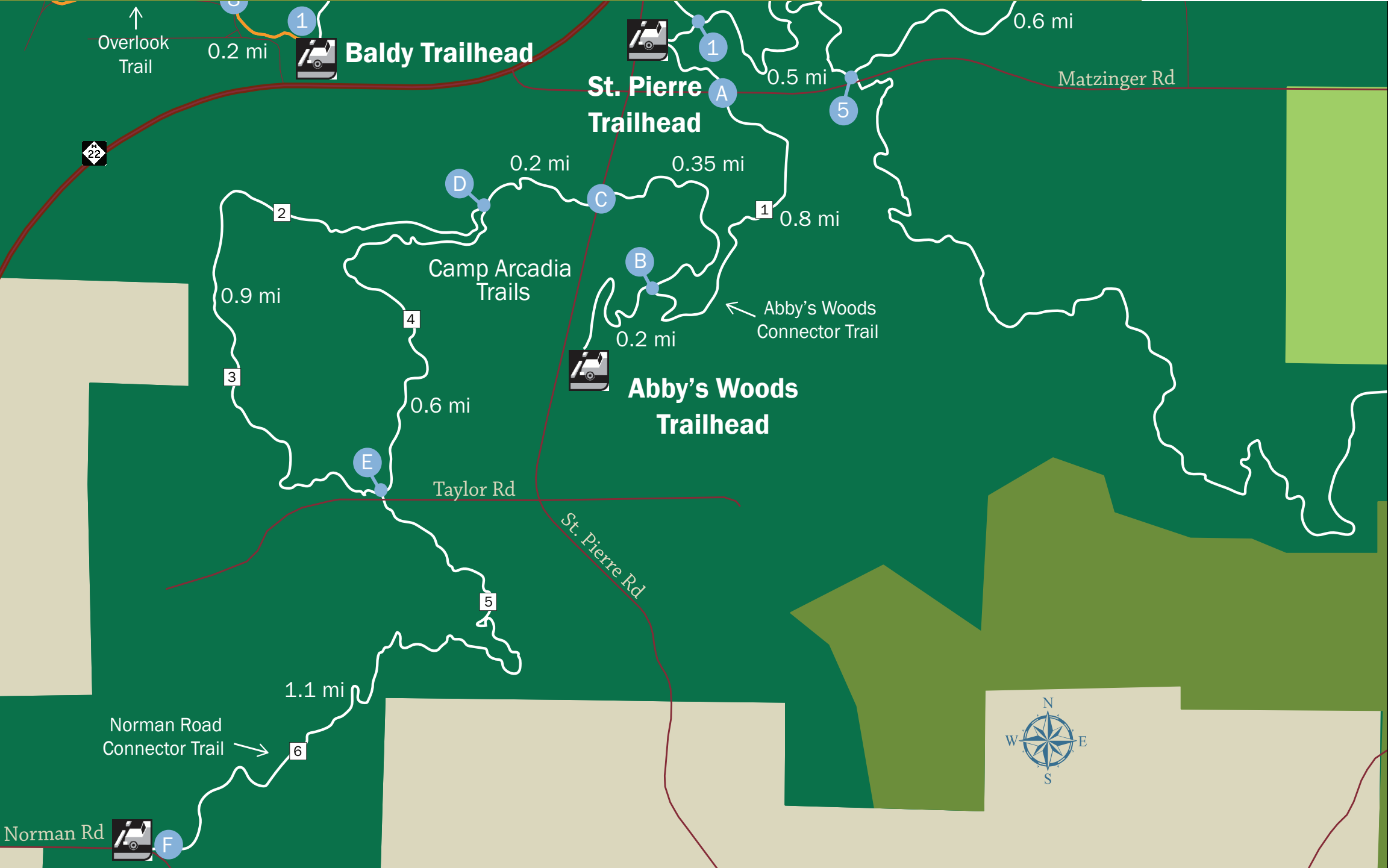
# ARCADIA DUNES: THE C.S. MOTT NATURE PRESERVE

## Camp Arcadia Trails



PROTECTING SIGNIFICANT NATURAL, SCENIC, AND FARM LANDS—AND ADVANCING STEWARDSHIP—NOW AND FOR FUTURE GENERATIONS

GTRLC.ORG



### LEGEND

- Nature Preserve
- Protected Land: Privately Owned
- Ecologically Managed Forest
- Parking
- Intersections/ Trail Maps
- Hiking Trails
- Universally Accessible Trail
- Emergency Location Marker

# ARCADIA DUNES: THE C.S. MOTT NATURE PRESERVE

## Pete's Woods Trail



PROTECTING SIGNIFICANT NATURAL, SCENIC, AND FARM LANDS—AND ADVANCING STEWARDSHIP—NOW AND FOR FUTURE GENERATIONS

GTRLC.ORG



Swamp Rd


**ONE-WAY  
TRAIL**




1.5 mi loop

### LEGEND

 Nature Preserve

 Parking

 Hiking Trails