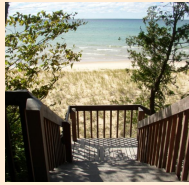


Green Point Dunes Preserve

240 acres, 3 miles trails,
3/4 mile on Lake Michigan



The scenic trail weaves through meadows and forest and affords stunning views of the Lake Michigan coast. A stairway leads down to the sandy beach. Moderately strenuous hiking.



On M-22, 2 miles south of Elberta, turn west on Green Point Road. The parking area and trailhead are on the left.



Arcadia Dunes: The C.S. Mott Preserve

3,800 acres, 2 miles on Lake Michigan

St. Pierre Trailhead



10 miles of trail

Professionally designed, multi-use trails on the east side of M-22 offer a unique experience for mountain biking, hiking, and trail running. From M-22 and Joyfield Rd, go south 1/4 mile, turn left on St. Pierre Rd., and the parking lot and trailhead is ~100 yards on the left.

Baldy Trailhead



2 miles of trail

Hike the trails and enjoy the majestic views from "Old Baldy" - a dune overlooking Lake Michigan. Short, steep climb to the dune. No beach access. Parking lot and trailhead on west side of M-22, 0.75 miles south of Joyfield Rd.



Swamp Rd. Trailhead (Pete's Woods)



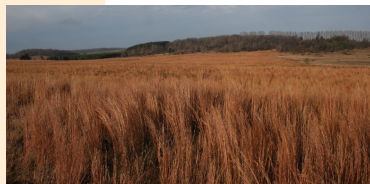
1.5 mile trail

The best spring wildflower show can be experienced on this forest trail. Hike or run it in any season. Parking lot and trailhead is located on Swamp Rd. 1/4 mile south of Joyfield. Along Joyfield, Swamp Rd. is 1.7 miles west of US-31 and 3.5 miles east of M-22.

Arcadia Dunes: Grassland



300 acres of old fallow fields are being restored with native grasses and wildflowers. It's a haven for grassland bird species including Grasshopper Sparrows. Watch birds from along Keillor and Butwell Roads. The parking turn-out is on Keillor Rd., 1/2 mile north of Glovers Lake Rd.

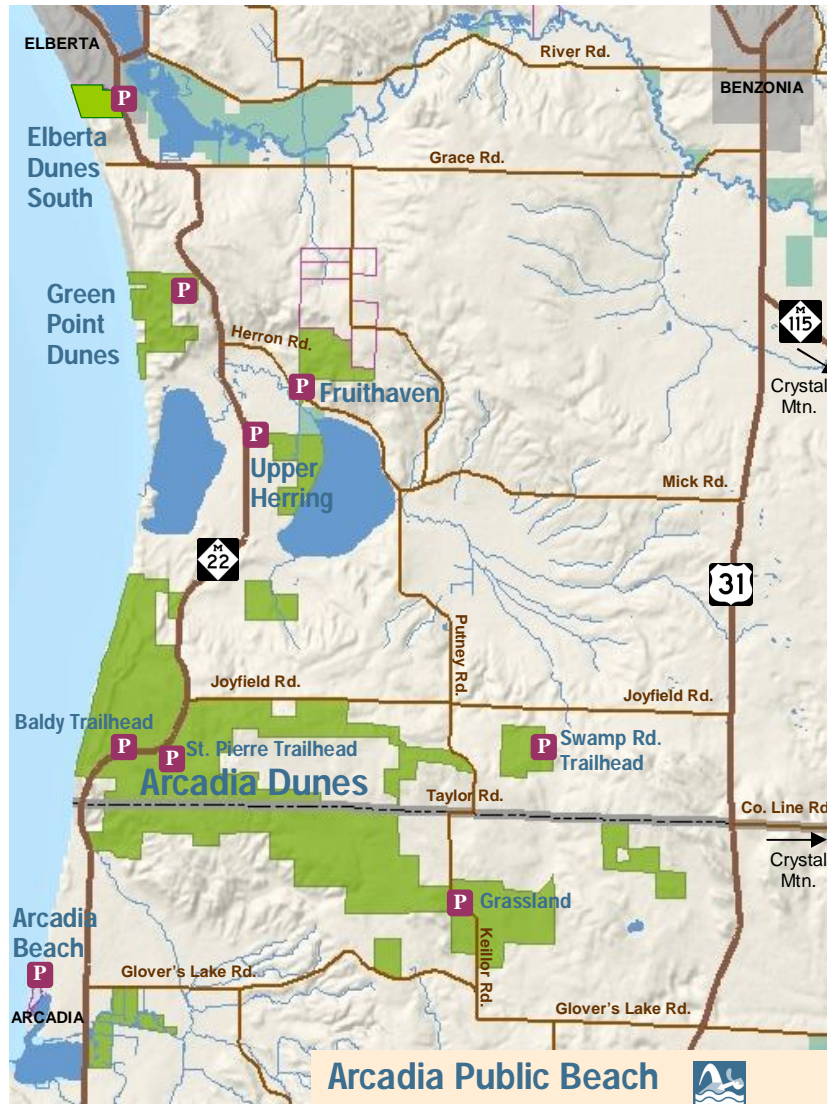


Elberta Dunes South Natural Area

58 acres, 1/4 mile on Lake Michigan



The Village of Elberta owns this natural area, which was protected with the help of GTRLC. Until permanent trails are built, a footpath goes through forest to views of lake Michigan and the Betsie River Valley. Steep, strenuous hiking. Park along M-22, south side of Elberta.



Arcadia Public Beach



1/4 mile of public beach

Arcadia Township owns this beach, which was protected with the help of GTRLC. Convenient close-in parking, with port-a-johns available.

Located at the west end of Lake Street in Arcadia.



Fruithaven Forest Reserve



176 acres, two-track trails

This wooded preserve was originally part of Fruithaven Orchards. Now, this site is a haven for trees and wildlife. Explore unmarked two-tracks at this quiet preserve.

On M-22, about 3 miles south of Elberta, turn east on Herron Rd. The parking area and trailhead are about 1 mile on the left.

Upper Herring Lake Preserve



163 acres, 1.2 mile trail

Upper Herring Lake is a haven for many species of plants and animals. At least 30 species of birds can be easily spotted from the boardwalk and meadow trail. Each June, Upper Herring's wetlands are bejeweled with brilliant blue flag iris.

The parking lot is on the east side of M-22, 1 mile south of Herron Rd. next to an old schoolhouse.



Recreational Opportunities

Preserve Guidelines

Visit Our Coastal Nature Preserves



Western Benzie and Manistee Counties



Hike

Hike forested trails at **Green Point**, **Arcadia Dunes**, and **Fruithaven** or flat fields and boardwalk at **Upper Herring**.



Mountain Bike & Trail Running

Arcadia Dunes: St. Pierre Trailhead is the access point for 10 miles of professionally designed mountain bike trails. Trail runners and hikers love these trails too!



Enjoy Scenic Views

Inspiring, scenic Lake Michigan views are a short hike away at **Green Point Dunes**, **Elberta Dunes South** and **Arcadia Dunes: Baldy Trailhead**.



Swim

Green Point: A 1 mile moderately strenuous hike rewards you with a quiet, secluded beach.
Arcadia Beach: Parking and port-a-john makes this a convenient beach for the family or for a quick swim.



Birdwatching

For particularly rewarding birdwatching, visit **Upper Herring Preserve** and the **Arcadia Dunes Grassland Preserve**.

For a complete list of recreational opportunities, please visit GTRLC.ORG

The Conservancy works hard to balance public use with the protection of natural resources. We welcome educational and recreational use, as long as guests are mindful that they are visiting the homes of the plants and animals whose lives depend on the land's protection.



At our preserves, please enjoy:

Hiking, bird-watching, snowshoeing, and other similar low-impact activities. If you chose to bring a dog to a preserve, it must be kept in your control at all times.

Please refrain from:

Camping, fires, dumping, littering, removing vegetation, using off-road vehicles, and snowmobiling.

Hunting is allowed on designated preserves. For your safety, we recommend that visitors wear bright orange clothing during the fall deer hunting season (October–December).

WITH YOUR HELP, WE ARE PROTECTING THE PLACES YOU LOVE FOREVER.

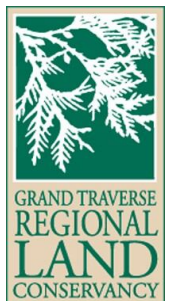
Visit GTRLC.ORG for individual preserve maps, ways to contribute and more.

4/2011 Photo credits: Joe Brooks, Paula Dreeszen, Len Klein, Angie Lucas

3860 N. Long Lake Rd., Ste. D
Traverse City, MI 49684
231.929.7911 GTRLC.ORG



We protect significant natural, scenic, and farm lands - and advance stewardship - now and for future generations.



GTRLC.ORG